



Charm Scout Capelet

Sizes 2-20
with cup sizes A-H

5/8 inch (in) (1.5 cm) seam allowances
are included on all pattern pieces.

Page 1 of 2

PAGE 1 PATTERN PIECES

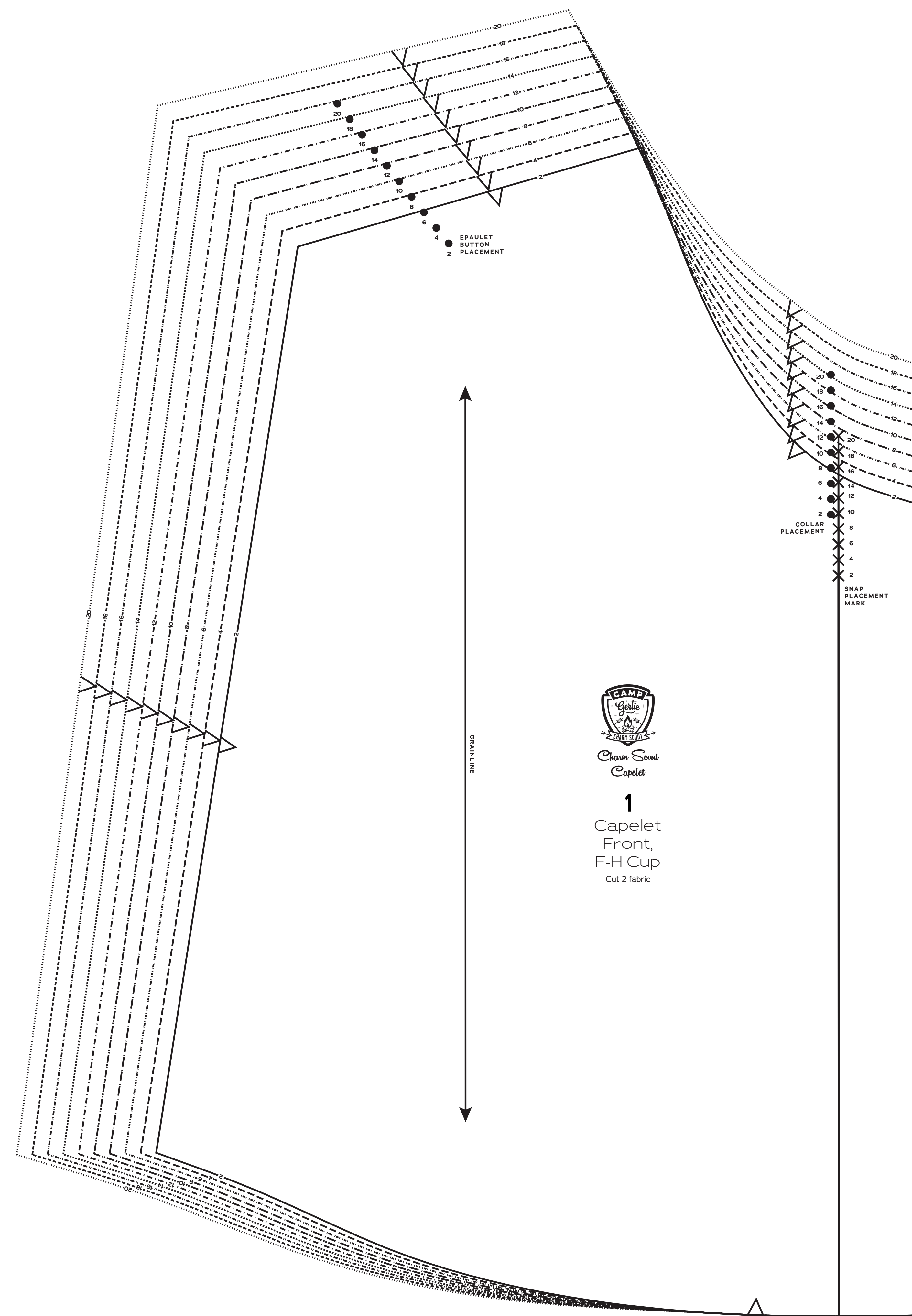
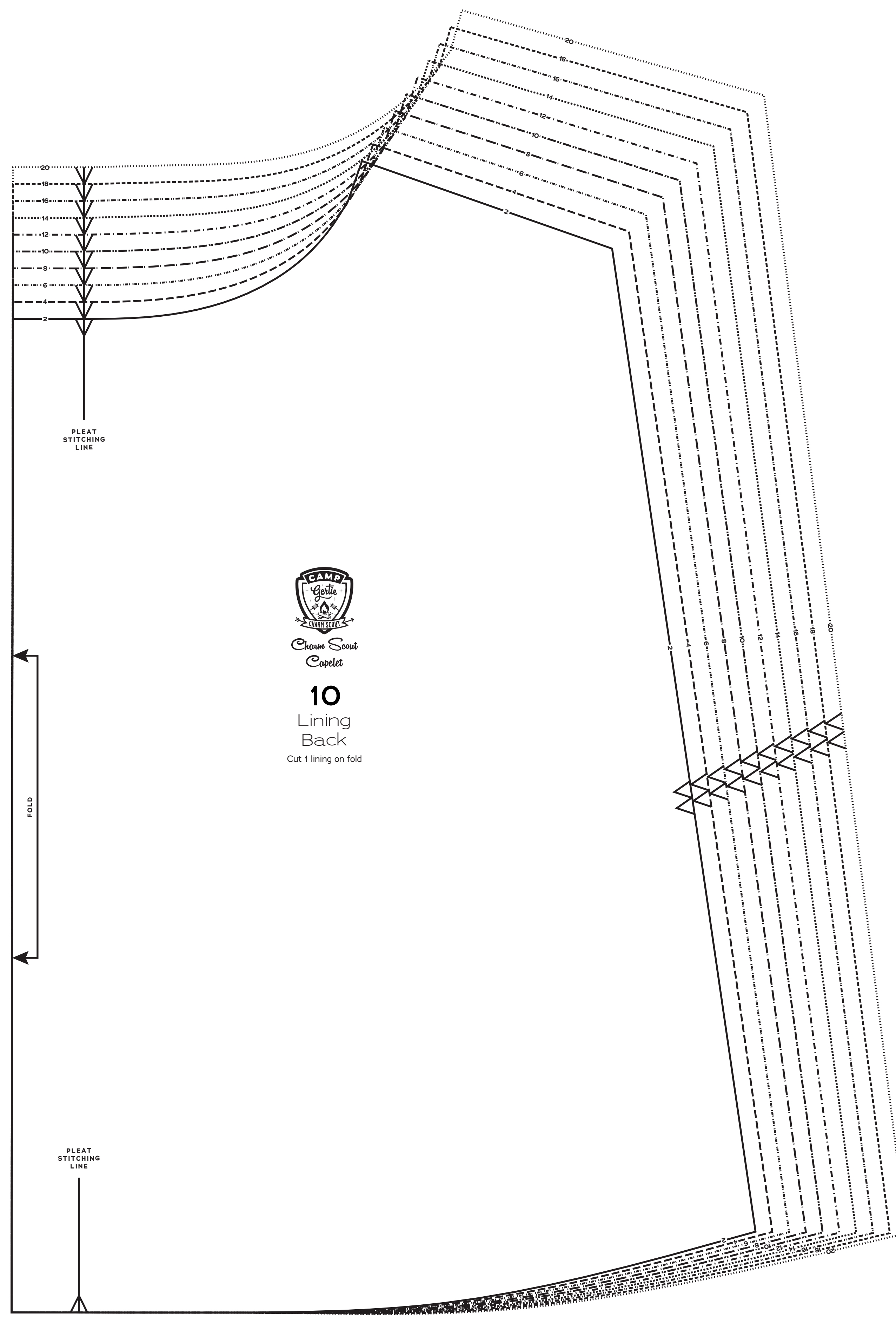
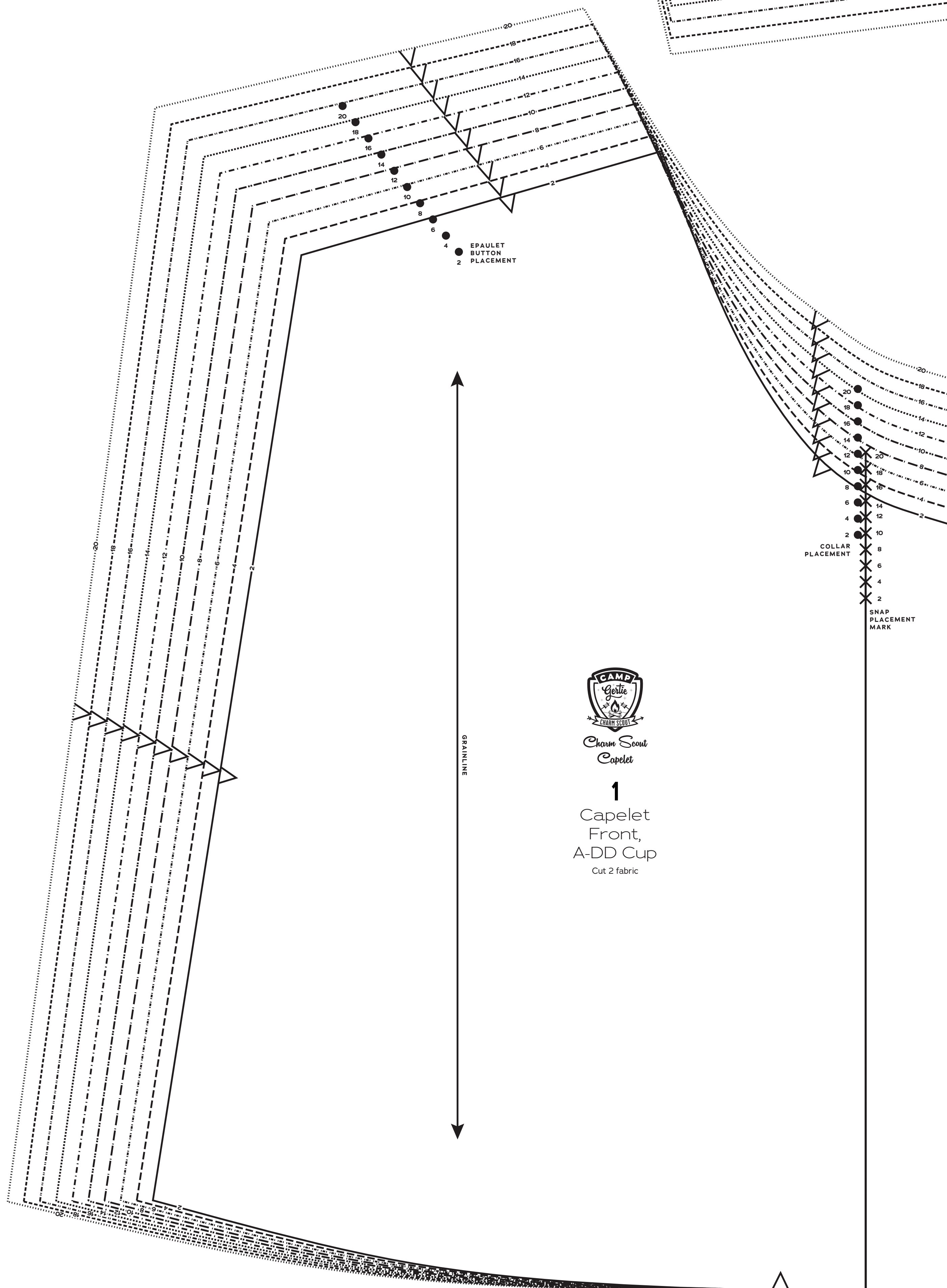
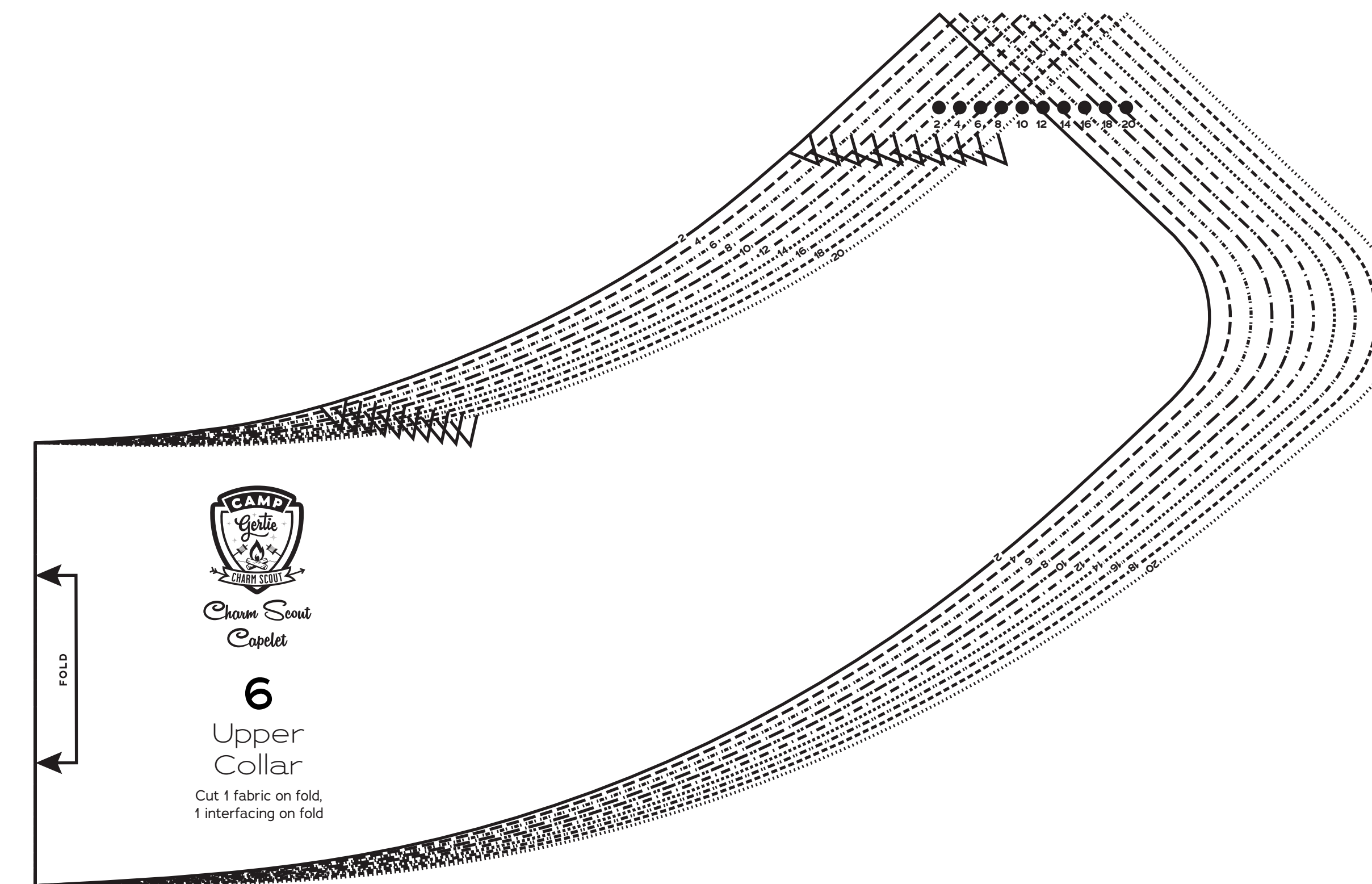
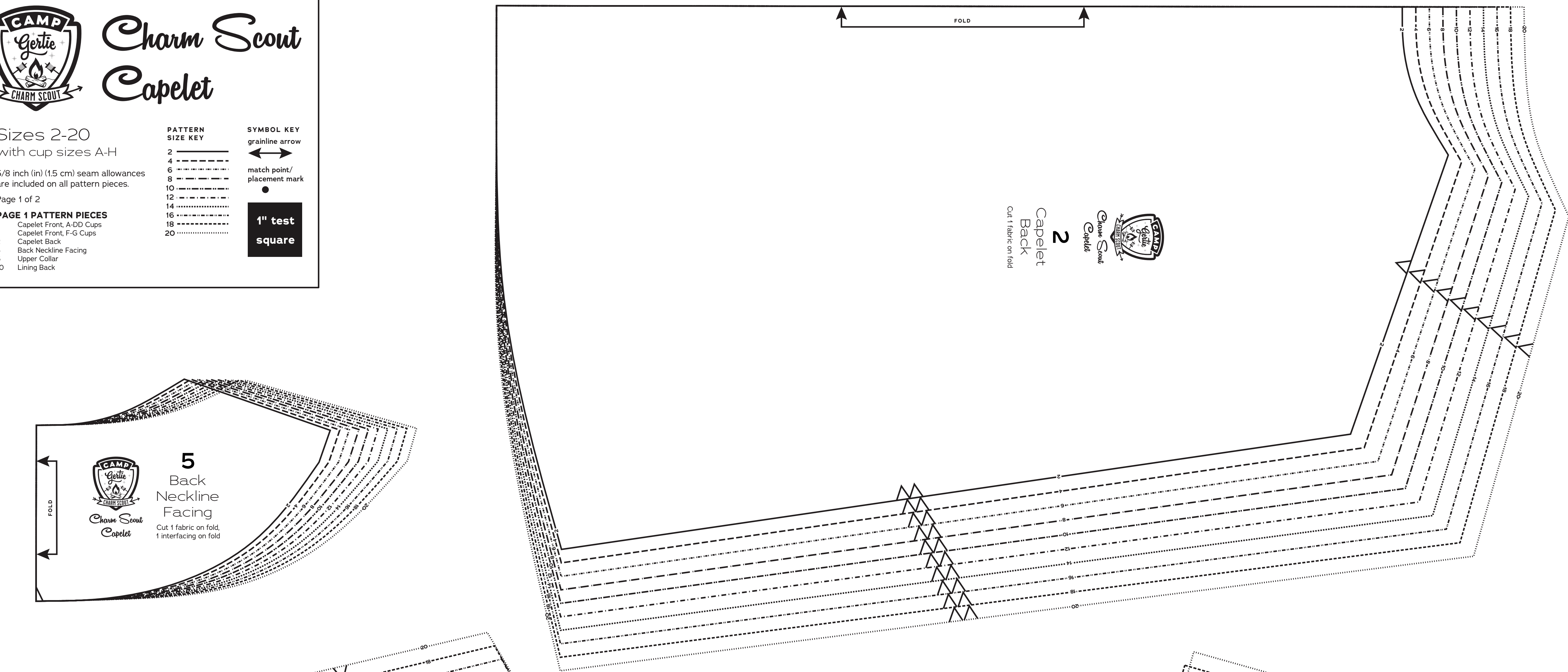
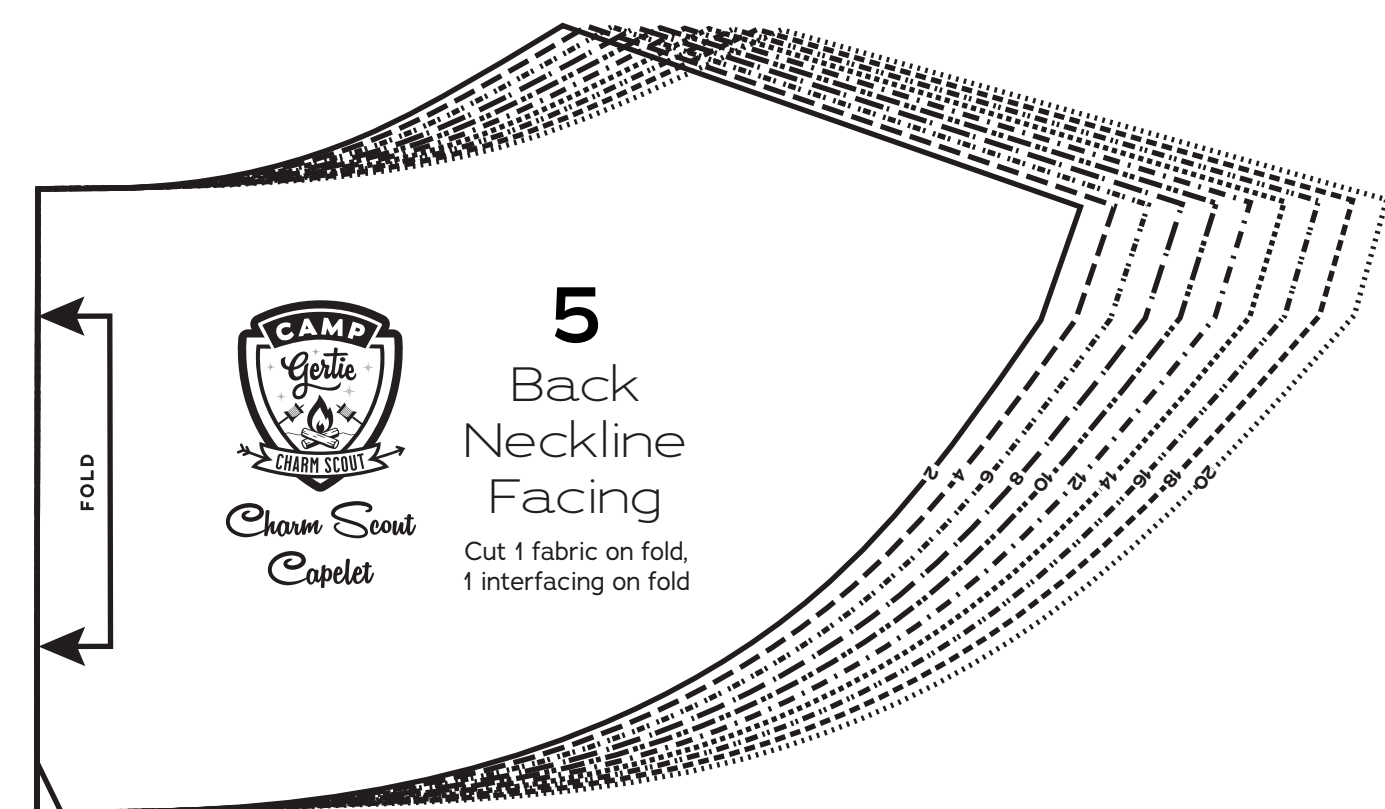
- 1 Capelet Front, A-DD Cups
- 1 Capelet Front, F-H Cups
- 2 Capelet Back
- 5 Back Neckline Facing
- 6 Upper Collar
- 10 Lining Back

PATTERN SIZE KEY

- 2
- 4
- 6
- 8
- 10
- 12
- 14
- 16
- 18
- 20

SYMBOL KEY

- grainline arrow
- match point/
placement mark
- 1" test square





Charm Scout Capelet

Sizes 2-20
with cup sizes A-H

5/8 inch (1.5 cm) seam allowances
are included on all pattern pieces.

Page 2 of 2

PAGE 2 PATTERN PIECES

- 3 Capelet Sleeve
- 4 Front Facing, A-DD Cups
- 4 Front Facing, F-H Cups
- 7 Under Collar
- 8 Epaulet
- 9 Lining Front

PATTERN SIZE KEY

2	---
4	---
6	---
8	---
10	---
12	---
14	---
16	---
18	---
20	---

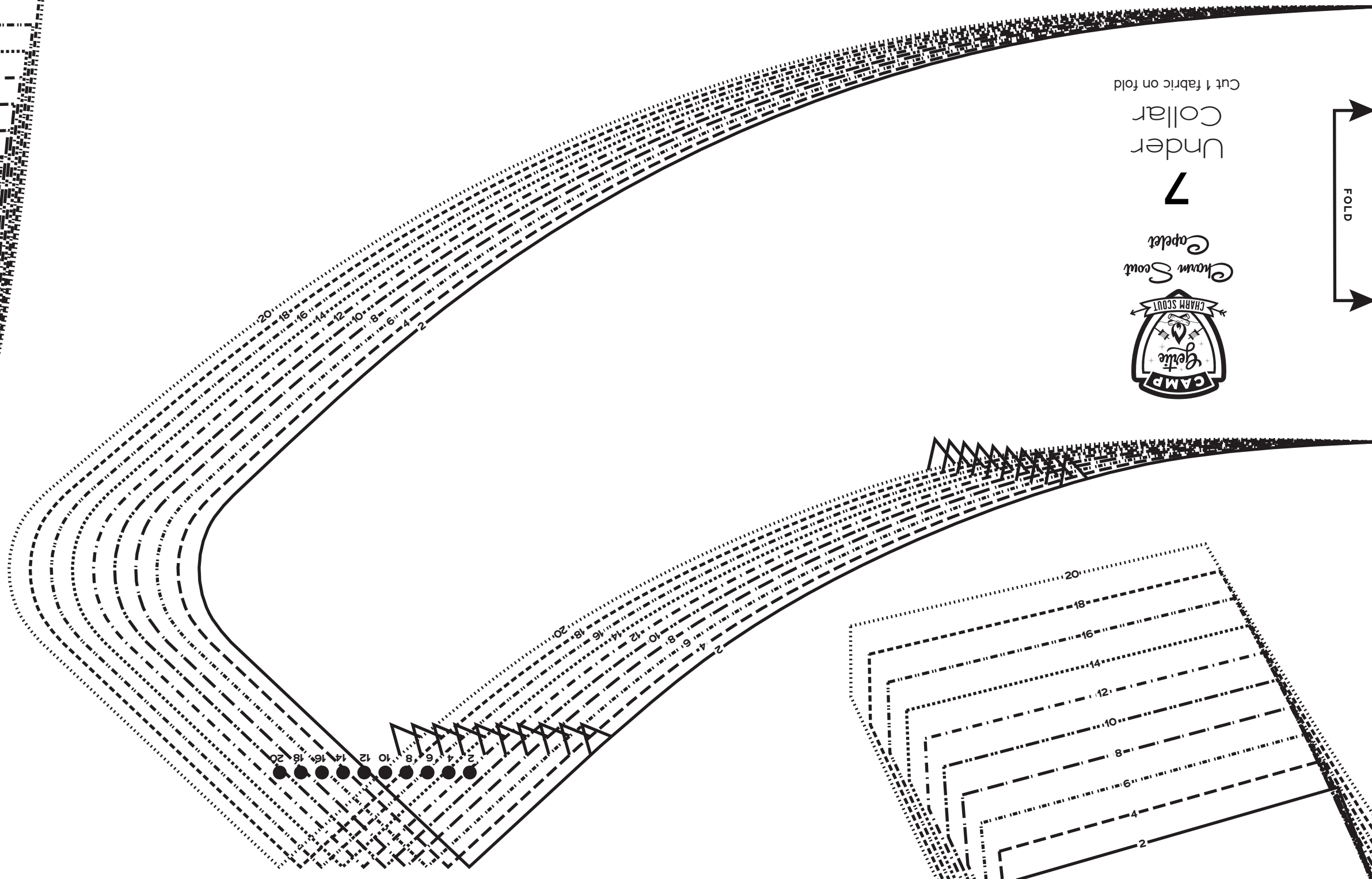
SYMBOL KEY

→	grainline arrow
↔	match point/ placement mark
●	1" test square



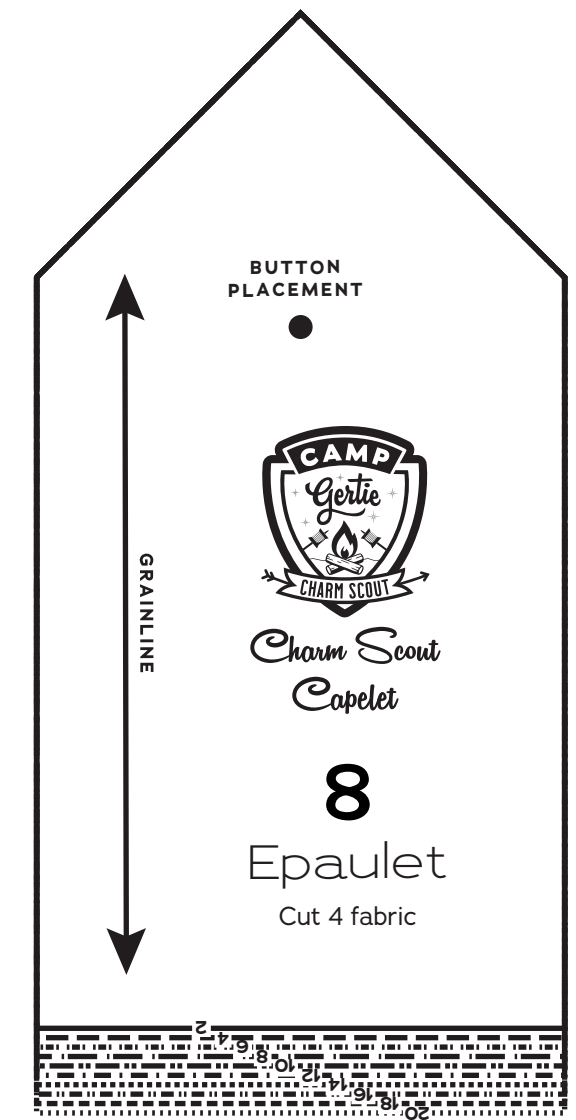
3
Capelet
Sleeve
Cut 2 fabric, 2 lining

GRAINLINE

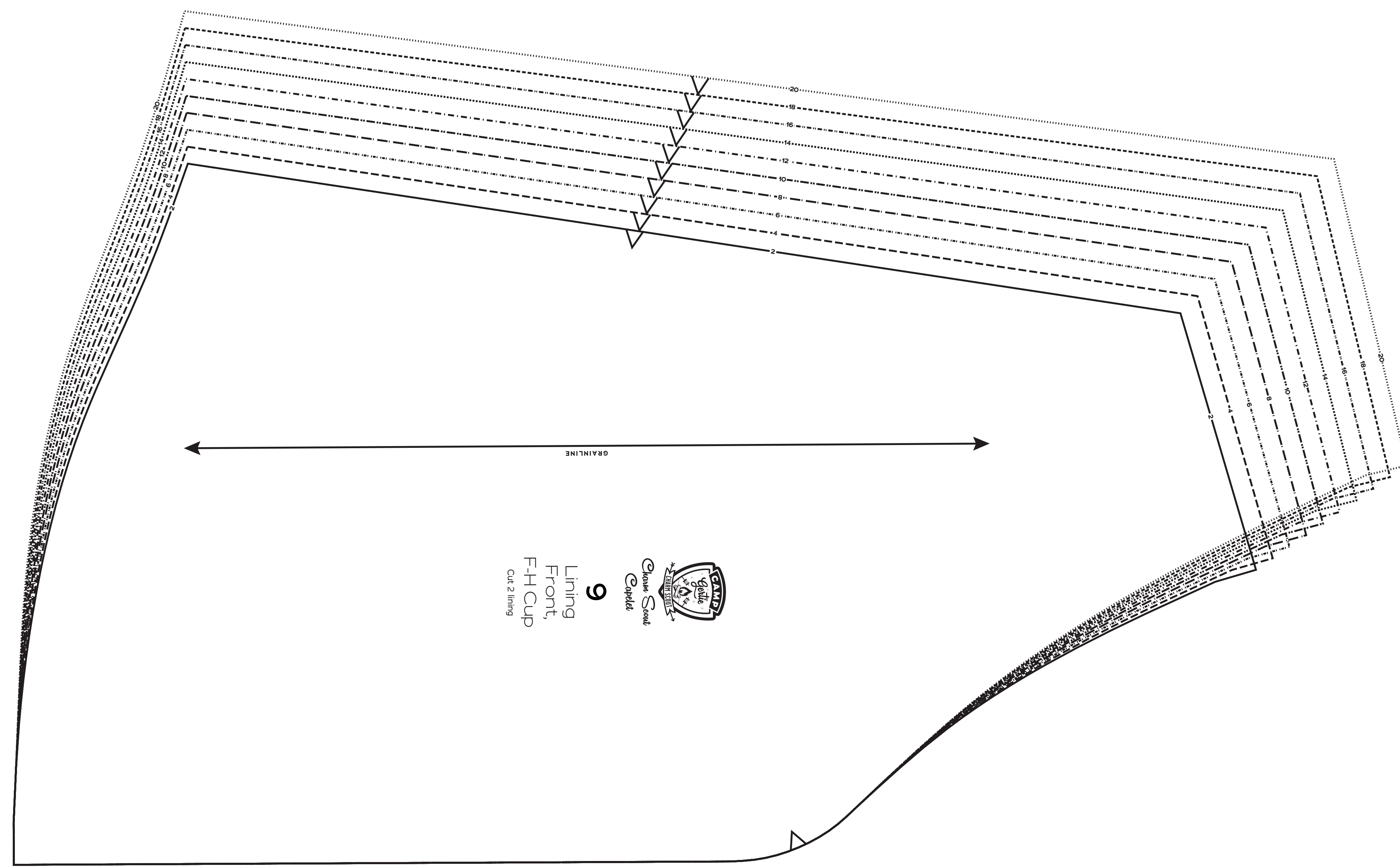


Cut 1 fabric on bias
Under
Collar
7
Charm Scout
Capelet

1" test square

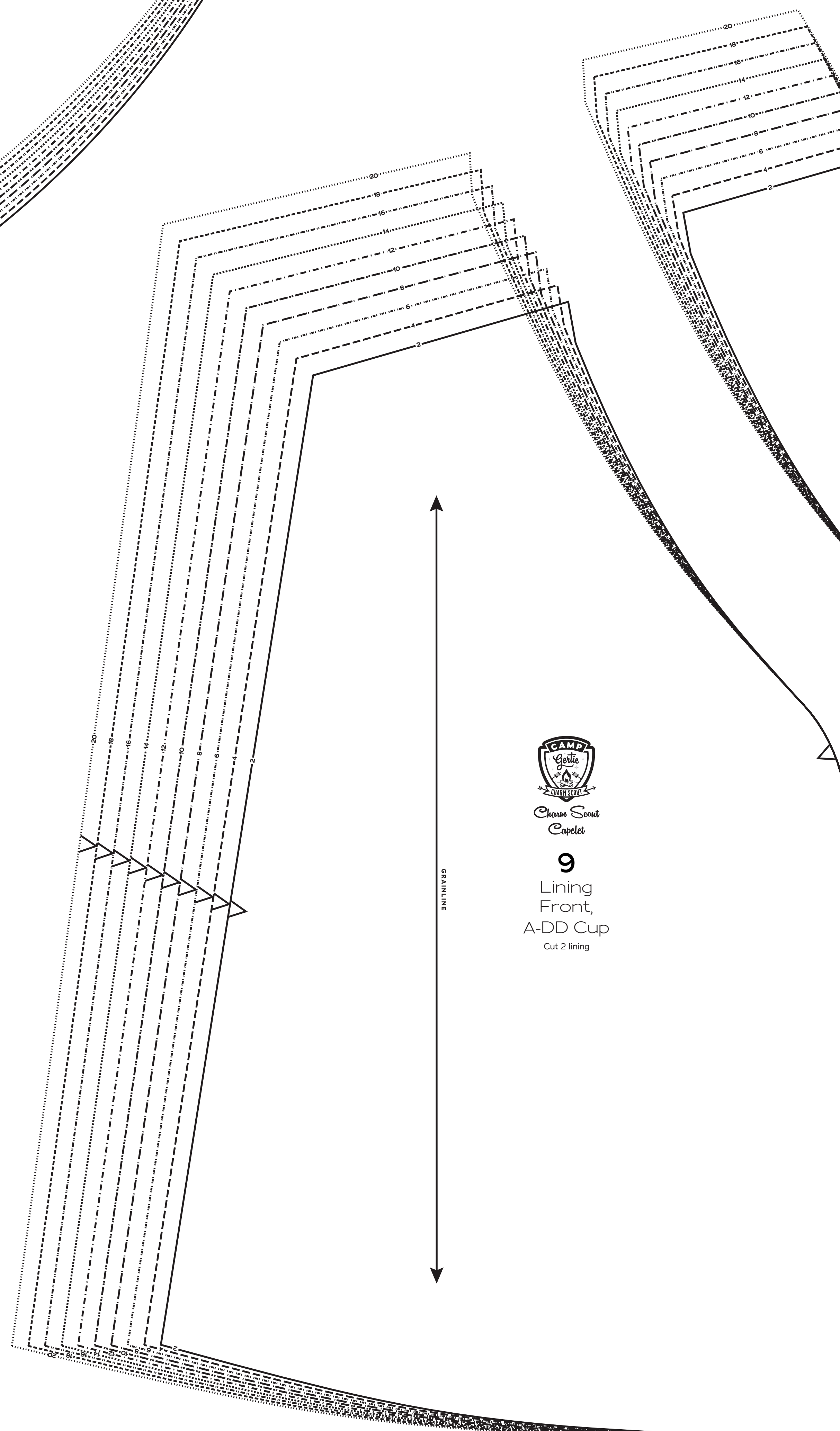


BUTTON
PLACEMENT
Charm Scout
Capelet
8
Epaulet
Cut 4 fabric



Charm Scout
Capelet
9
Lining
Front,
F-H Cup
Cut 2 lining

GRAINLINE



4
Front
Facing,
A-DD Cup
Cut 2 fabric, 2
interfacing

GRAINLINE

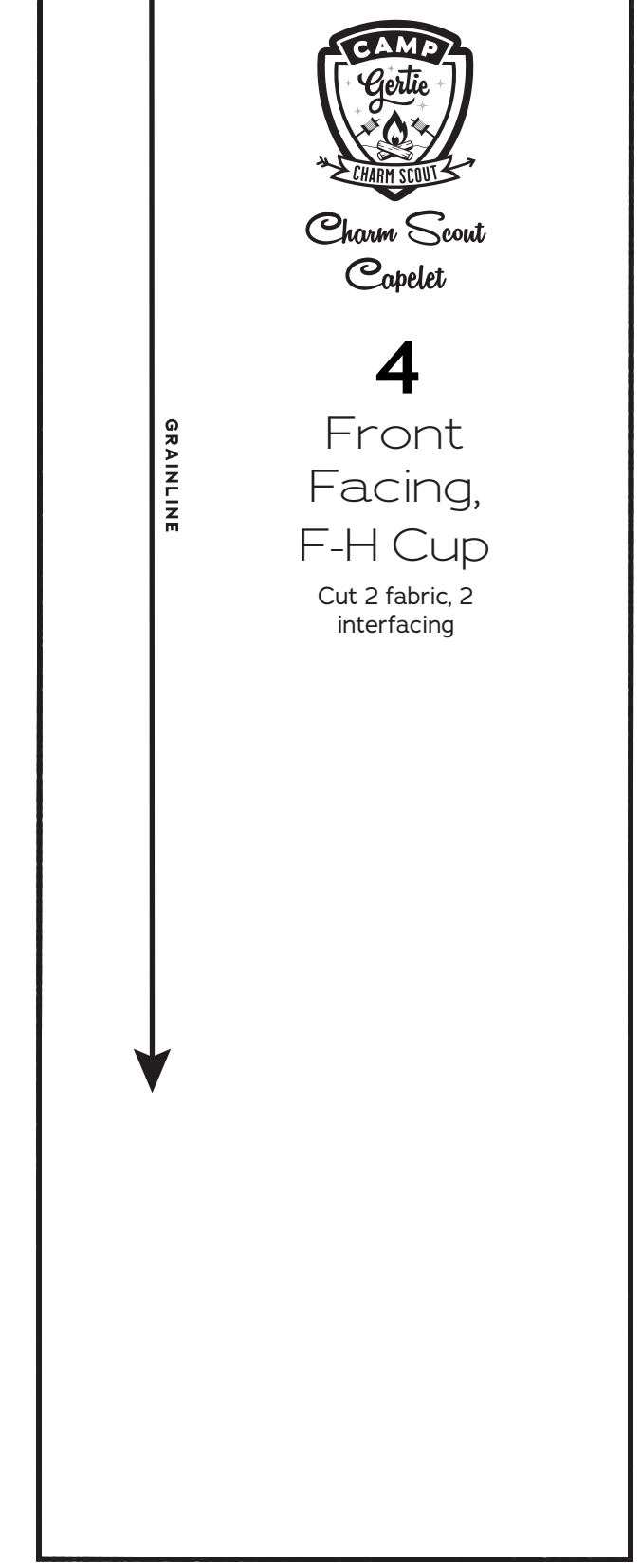
GRAINLINE



4
Front
Facing,
A-DD Cup
Cut 2 fabric,
2 interfacing

GRAINLINE

GRAINLINE



Charm Scout
Capelet
4
Front
Facing,
F-H Cup
Cut 2 fabric, 2
interfacing

GRAINLINE

GRAINLINE