



STUDIOCLASS

Simple Diorama Guide

PAINTLIST



Vallejo Model Color

- * Ivory (70.918)
- * Black (70.950)
- * Neutral Grey (70.992)
- * Blue Green (70.808)
- * Dark Grey (70.994)
- * Vermilion (70.909)
- * Orange Brown (70.981)

Scalecolor

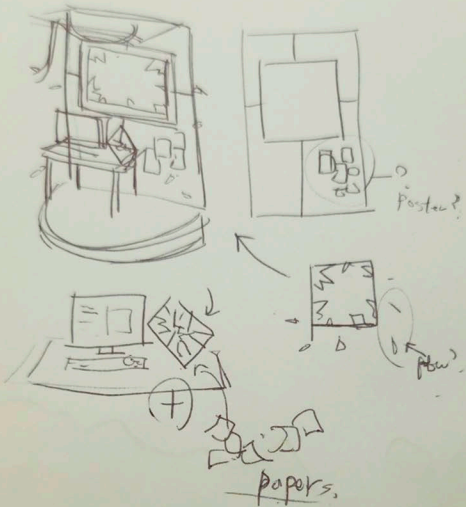
- * Brown Gray (SC-59)
- * Miskatonic Grey (SFG-47)

AK 3rd Generation

- * Silver Grey

GW Contrast Paint

- * Basilicanum Grey
- * Darkoath Flesh



This time, let's look at the process of creating a simple diorama base. The first thing to do is plan. I decided to describe scene which Hippolyta breaking through the window of terrorist's hideout, then I made a quick sketch in my notebook. There was a limit to the size of the base that I could be used, so I decided to work around the walls and windows.

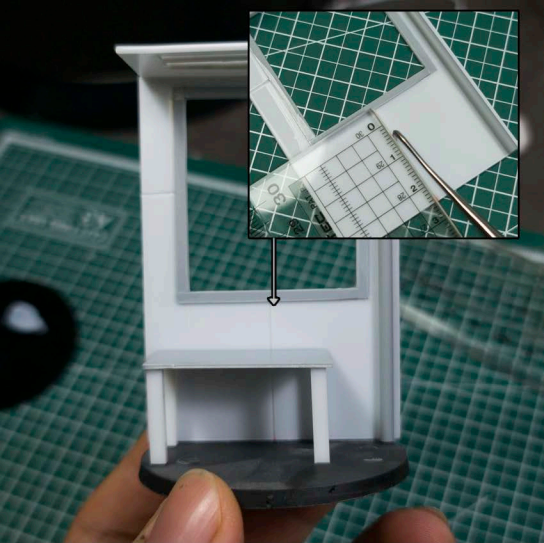


First, I made the basic shape of the wall using plastic plate. Instead of the commonly used foam board, I used plastic plates and plastic rods of different thicknesses. This is because plastic plate has higher strength than foam board, and it is easy to adhere neatly with non-resin adhesive. The products I used are as follows.

1. Tamiya PLA Plate 1.0mm
2. HIPS Plastic Sheet 0.3mm
3. Wave Plastic Pipe Wall Thin (Gray) 3.0mm



If you are assembling a plastic model or plan to use plastic plate, I highly recommend using a non-resin adhesive. This is an adhesive that has a viscous consistency like water, and it melts and bonds the plastic surface that comes into contact with it. The biggest advantage of this adhesive is does not become a white lump like instant glue. When working mainly on plastics, this non-resin adhesive makes the work much cleaner and more convenient. I mainly use a product called Tamiya Extra Thin Cement in the photo above.



Make a groove on the wall surface by scratching the platen wall with a sharp tip. This step is easy and simple, still very effective. In addition, making the basic shape of the desk using plastic plate and plastic rod, then place it on the base to check the overall composition.

The top of the desk is HIPS Plastic Sheet 1.0mm, and the pillar is TAMIYA Plastic Beam 3mm. Likewise, using non-resin adhesive.

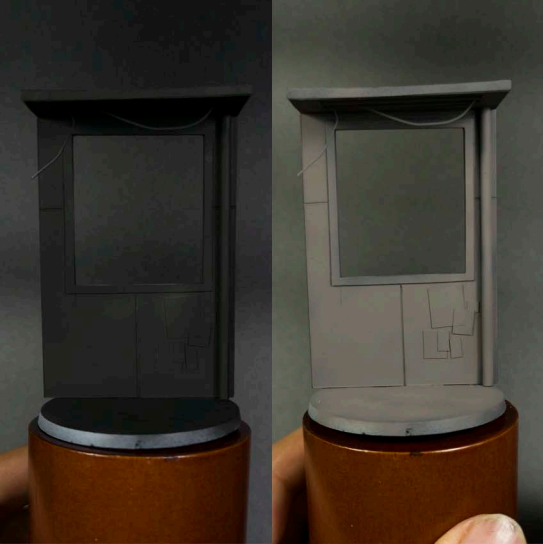


I decided to add a little more detail on the wall. First, attach a thin wire to express the broken wire in the ceiling. This wire was also useful in the future when making glass.

Also, Tamiya Plastic Paper 0.2 mm is used to express the papers attached to the wall. Plastic paper is very easy to process because it is paper-thin and flexible. Since the walls are also plastic, you can attach them neatly as in the photo above with a non-resin adhesive.



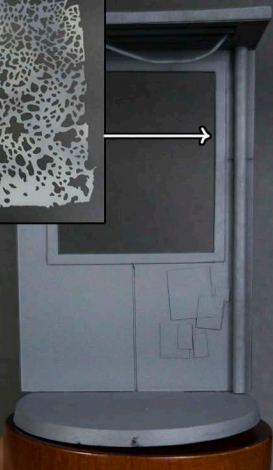
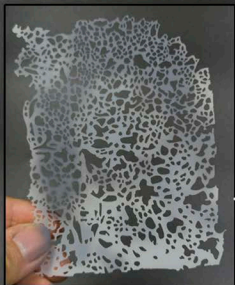
Now the adds detail to desk. Cut out the 0.3mm plastic plate and attach it to the parts that will be the monitor and keyboard. In addition, bend the plastic paper you used earlier to make it into a flying paper shape. Plastic paper is basically thin plastic, so once it is bent well, it won't collapse even if it's floating in the air. If it does not bend well, use a hair dryer to heat it and then process it to make it easier to work.



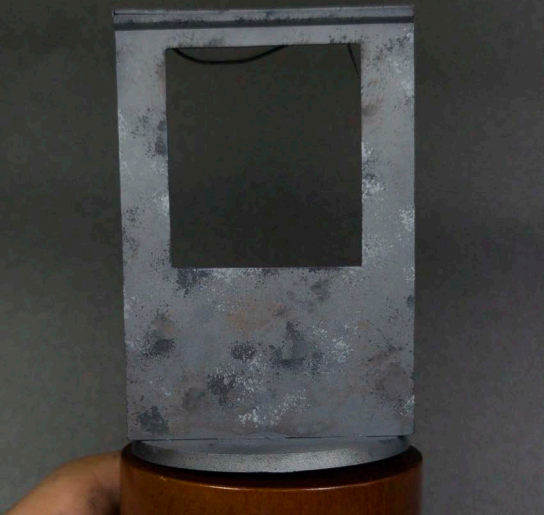
Now that the basic shape is complete, it's time to paint.

First, paint the entire terrain with Vallejo Model Color Black. I used an airbrush for quick work. However, if you don't have airbrush, you can paint enough with a brush.

Once the previous color has been painted, paint the entire terrain again with Scalecolor Brown Gray. It is okay if the lower color is a little visible. This is because you need to create a texture to get rid of the awkwardness of the smooth plastic plate.



Paint Scalecolor Miskatonic Gray all over the terrain, then again Vallejo Model Color Neutral Gray all over the terrain. I used an airbrush, so I purposely made the stains by using a stencil as above. If you're working with a brush, you can deliberately leave a mark like a coffee stain, or use a drybrush.



Now it's time to express the texture a bit more.

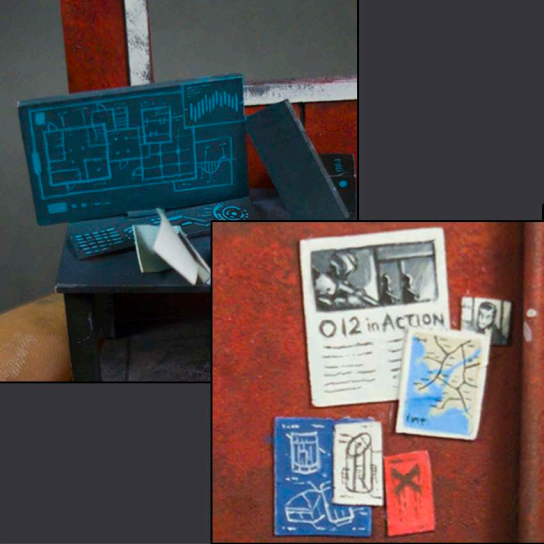
I used a sponge stippling technique. Tear off the sponge in small pieces, then apply paint to the sponge and wipe it off as if you were doing a drybrush. Then simply point out the sponge on the desired surface. The picture above shows Vallejo Model Color Dark Grey, Scale-color Brown Grey, and Vallejo Model Color Neutral Grey in order. This technique is useful for creating irregularities that are difficult to express with a brush.



Once you have a irregular surface, it's time to create additional shades. Apply a thin layer of GW Contrast Basilicanum Gray and GW Contrast Dark Oath Flesh several times and dry to create a contrast. At this time, if you just leave dry it after applying the contrast paint, it will cause severe stains and the details will be easy to disappear. So after applying the contrast, use a sponge to absorb excess paint. This process make stain similar to the previous stippling, so create thin and natural contrast.

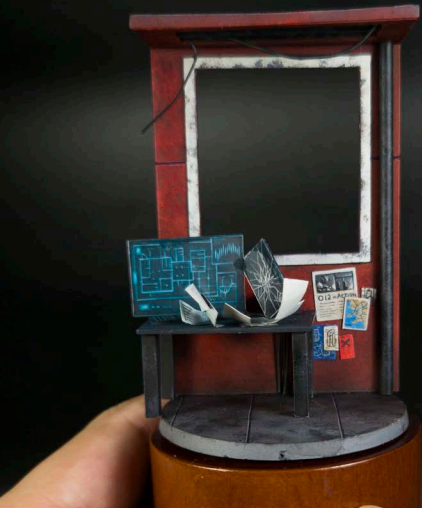


Next, paint the paper and the white window frame with AK 3rd Silver Gray. Afterwards, use a sponge to express discoloration or mold on the window frame with Vallejo Model Color Neutral Gray. In the case of paper, apply a thin layer of paper several times so that the previously expressed stains do not stand out.



Now, use freehand drawing for express the details of the paper or monitor. For the monitor, I made the base color with Vallejo Model Color Blue Green + Vallejo Model Color Black, and then painted the screen with Blue Green.

Freehand work looks great, and it's not that difficult. This is because most freehand working on plane surface. As long as you can draw thin lines with No. 0 or No. 00 brushes, drawing small letters or pictures is not that difficult. Challenge yourself with confidence.



Now put the parts you worked on together to see the overall feel. I added highlighting inside the screen with Vallejo Model Color Blue Green + Vallejo Model Color Ivory to give the monitor screen a glowing feel. In addition, Tamiya Pla Plate 0.2 mm (Transparent) was cut to the size of a monitor, and then cracked with a knife to represent a broken screen.



Now put the parts you worked on together to see the overall feel. I added highlighting inside the screen with Vallejo Model Color Blue Green + Vallejo Model Color Ivory to give the monitor screen a glowing feel. In addition, cut the Tamiya Pla Plate 0.2 mm (Transparent) to the size of a monitor, and then cracked with a knife to represent a broken screen.



Now, cut the Tamiya Pla Plate 0.2mm (Transparent) into small pieces, and then pasted over the finished terrain to represent the pieces of glass that break due to the impact of the break-in. Apply lightly adhesive to the end of the piece of plastic plate, then attach it to furniture or wire. Because this transparent plastic plate is very lightweight, so it attach well with a little bit of adhesive.



Finally, finish it by attaching the model to the appropriate location. Now simple diorama was completed.

Thanks for reading the long guide!