

# Build Your Own Duck

Print out the following pages to craft your own little paper friend.



## How it works

### 1.

#### Print it.

Thinner paper technically works but it's easier if you use thicker paper. For this model we recommend 160g/m<sup>2</sup> (=110 lb. text). If you have to resize the pages when printing them, make sure to scale them proportionally.

### 2.

#### Cut it out.

Scissors are fine, but you can make more precise cuts by using a utility knife or craft scalpel with a metal ruler. Tip: write the marks and hints on the back of the cutouts so you won't get lost.

### 3.

#### Rabbit and fold.

To create nice clean folds you can prepare the paper by rabetting it by using a thin bone folder or the dull edge of a butter knife.

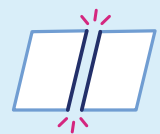
### 4.

#### Glue it together.

We recommend using all purpose adhesive but you might be able to work with other kinds as well.

#### How to read the instructions:

Cutting Line



Mountain Fold Line



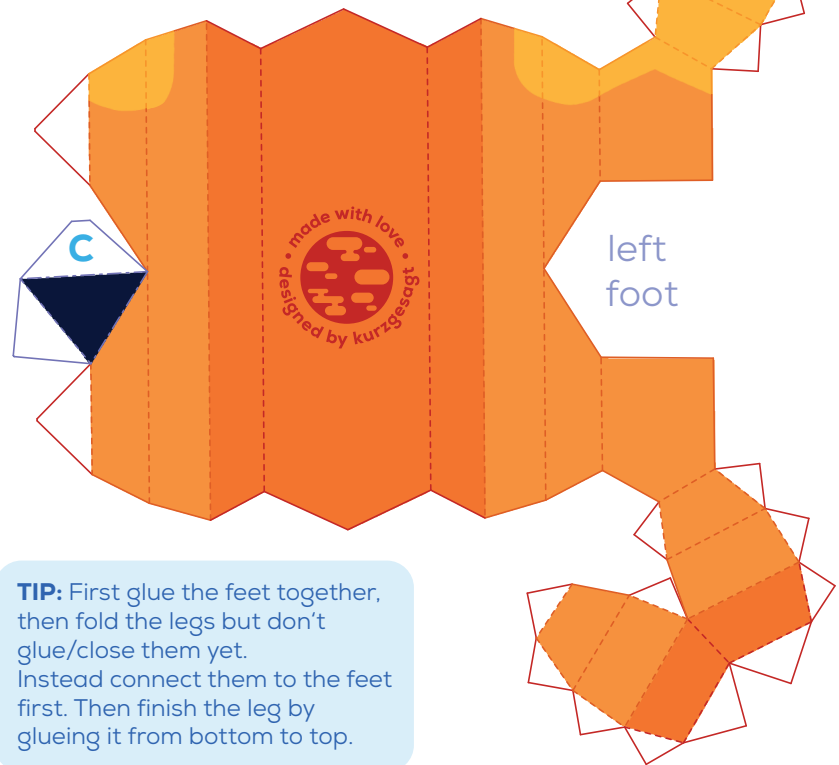
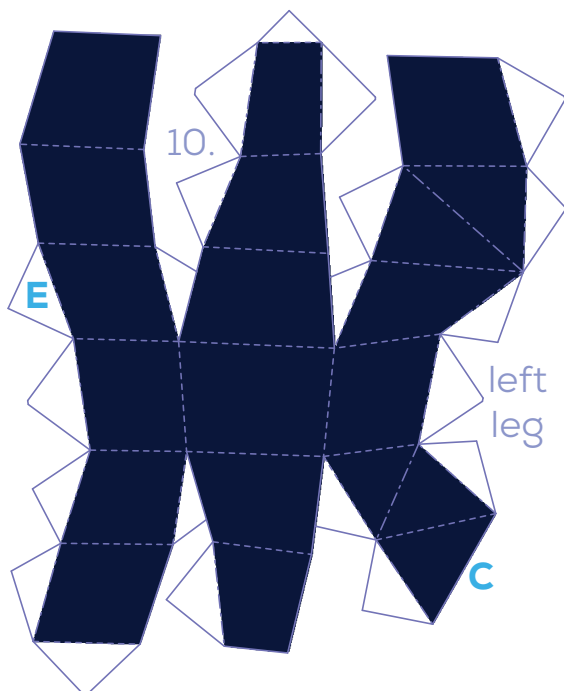
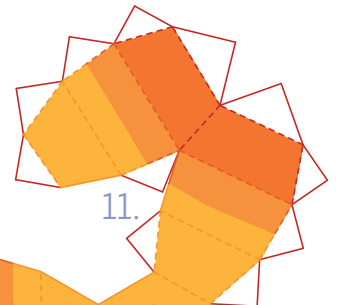
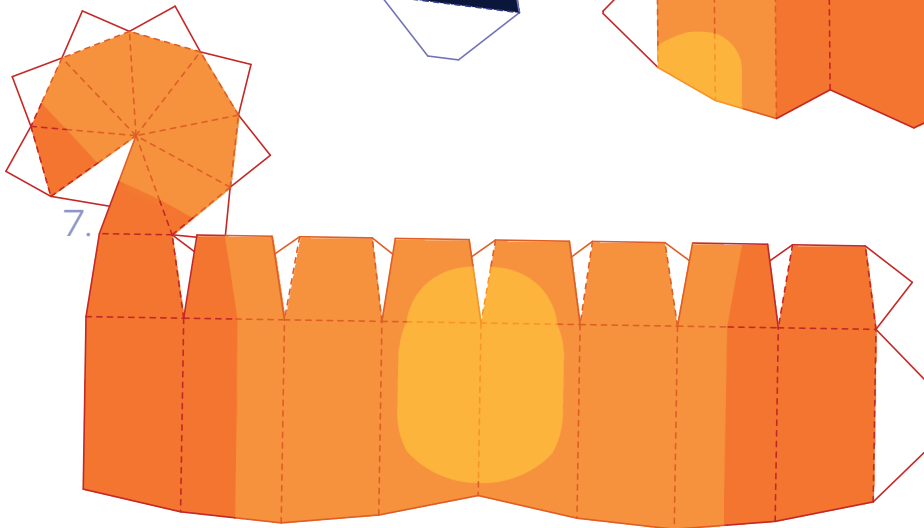
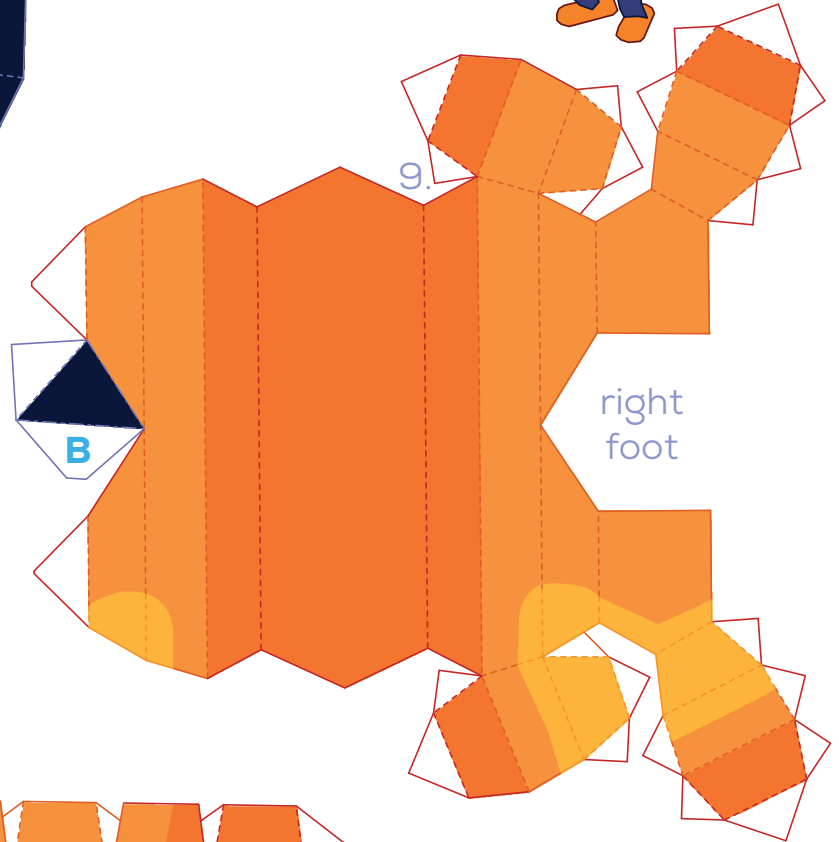
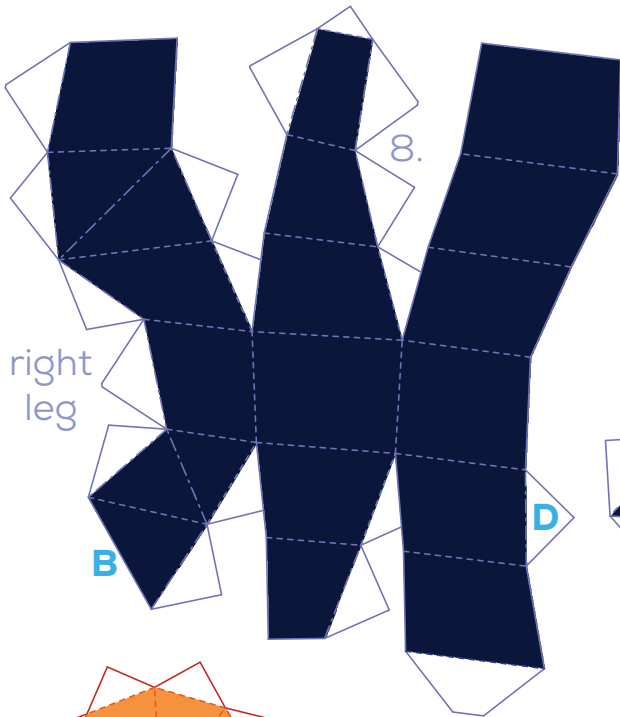
Valley Fold Line



# Papercraft: Head

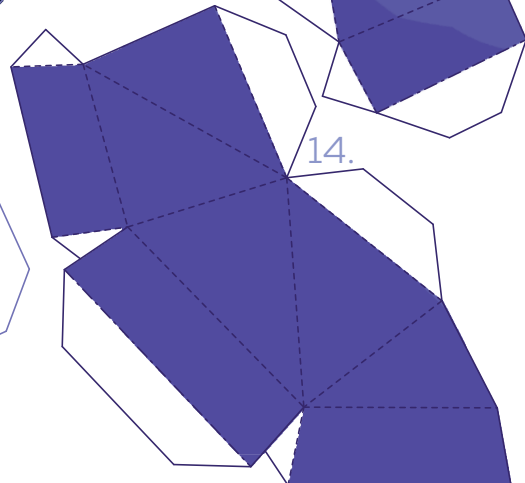
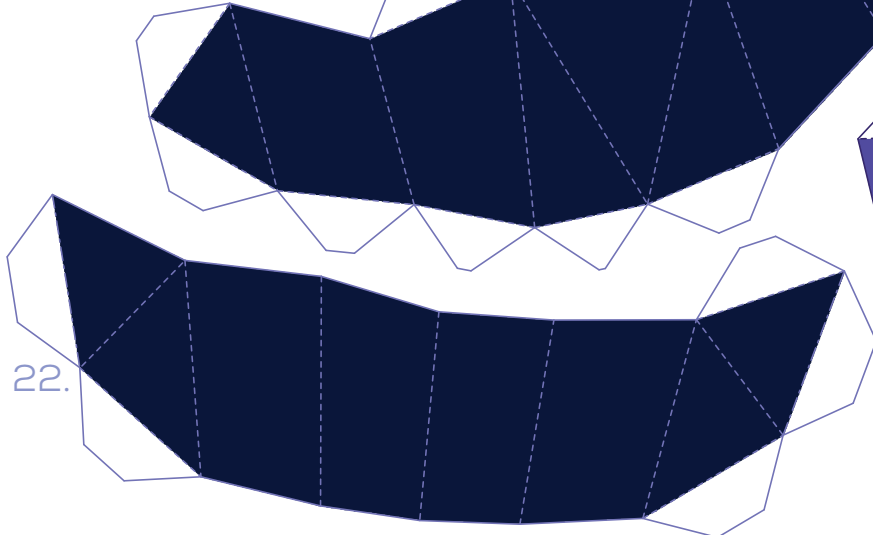
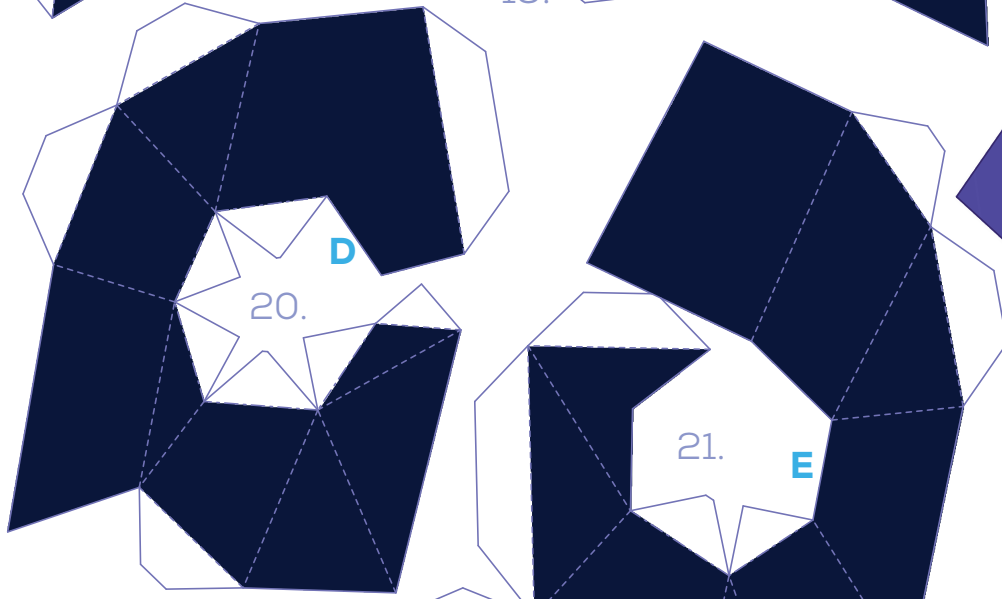
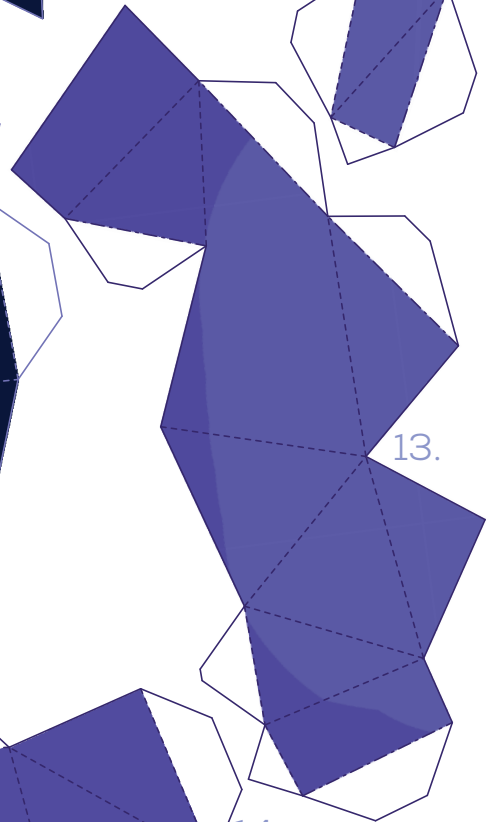
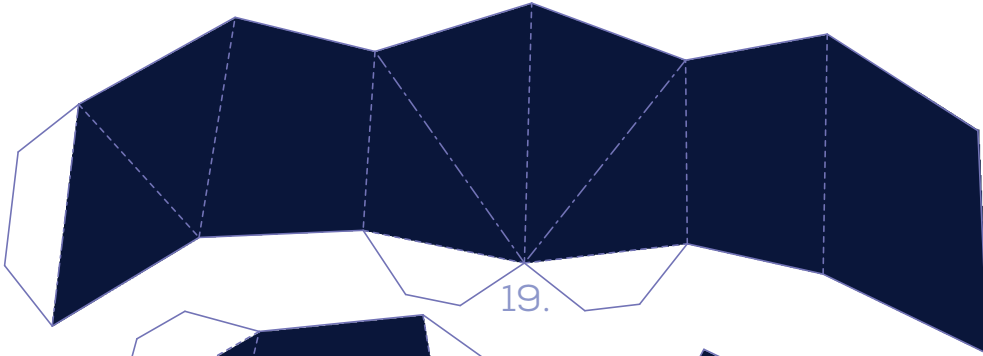
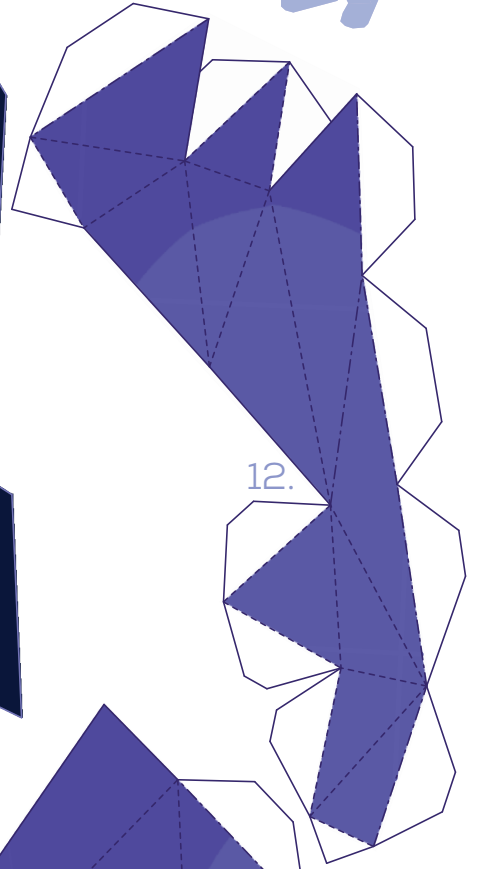
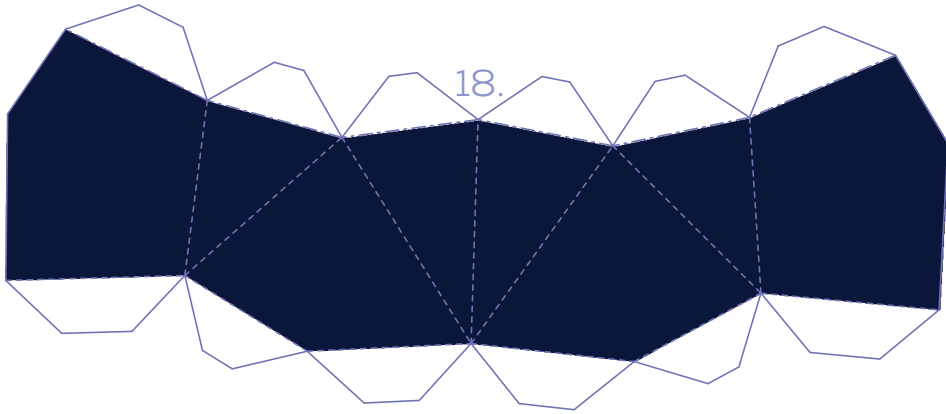


# Papercraft: Beak, Legs and Feet

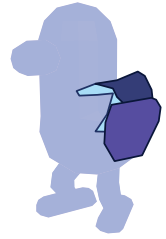


**TIP:** First glue the feet together, then fold the legs but don't glue/close them yet. Instead connect them to the feet first. Then finish the leg by glueing it from bottom to top.

# Papercraft: Tummy and Wing (r.)



# Papercraft: Back and Wing (I.)



**TIP:** The parts for the back (23 -29) are arranged in the same order as they should be connected in the end.

