



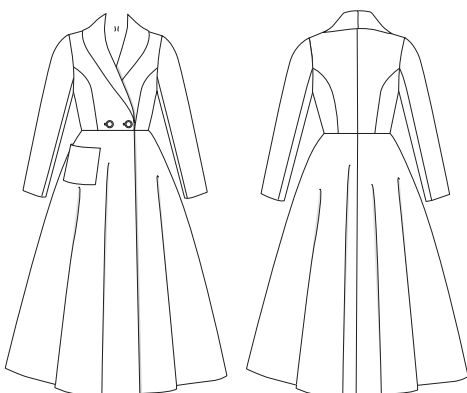
Rose Dressing Gown

A PRINCESS COAT EXPANSION PATTERN

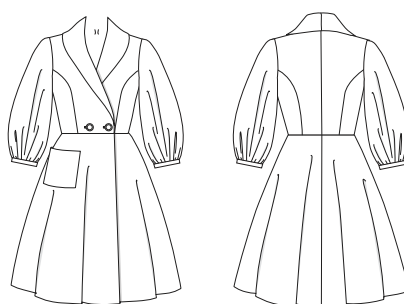


It's quarantine chic! Make a glamorous floor-length dressing gown or a short brunch coat for lounging in style. Inspired by Rose Weissman on *The Marvelous Mrs. Maisel*, this project will bring vintage charm to all your days at home.

soso, *Gertie*



Dressing Gown



Brunch Coat

To make the Dressing Gown version, cut the full length skirt and use the Tailored Sleeve from the Princess Coat. To make the Brunch Coat version, cut along the marked line on the skirt pattern and use the Bell Sleeve from the Princess Coat (sleeve binding pattern piece is provided in the expansion).

RESOURCES

[Princess Coat pattern](#)

[YouTube Princess Coat video](#)

FABRIC NOTES

I made the dressing gown in a floral metallic brocade and used both sides for a contrast effect; the lining is silk charmeuse. The brunch coat was made in wool challis with a silk crepe de chine lining. All fabrics shown are from [B&J Fabrics](#).

Recommended Fabrics: brocade, quilted fabrics, rayon and wool challis, terry cloth, and light- to medium-weight cottons. Lining fabrics: silk crepe de chine or charmeuse, cotton lawn, silk blends, and specialty lining fabrics.

SUPPLIES

- Requires two 1 1/8-in buttons
- Use a lightweight weft or tricot fusible interfacing

TIPS & TRICKS

- Cut the facings and pocket in a contrast fabric (or the “wrong” side of your dressing gown fabric, if it is reversible) to add design interest.
- Use a layer of tissue for cutting slippery lining fabrics: lay the tissue on your cutting surface, then lay the fabric on top. Pin your patterns to both the tissue and the fabric, and then cut both the tissue and the fabric together. The tissue stabilizes the fabric and makes it much easier to cut. You can use any tissue paper, but this specialty [Hi-Yield Tissue](#) is fabulous. I have a 45-inch (in)-wide roll on hand all the time.

A GUIDE TO THE PATTERN PIECES

These pieces are exclusive to this expansion pattern and must be used for this version:

DG1. Bodice/Undercollar Front

Cut 2 fabric, 2 interfacing

DG2. Bodice/Collar Facing

Cut 2 fabric, 2 interfacing (optional)

DG3. Skirt Front

Cut 2 fabric

DG4. Skirt Back

Cut 2 fabric, 2 lining

DG5. Skirt Front Facing

Cut 2 fabric, 2 interfacing

DG6. Skirt Front Lining

Cut 2 lining

DG7. Patch Pocket

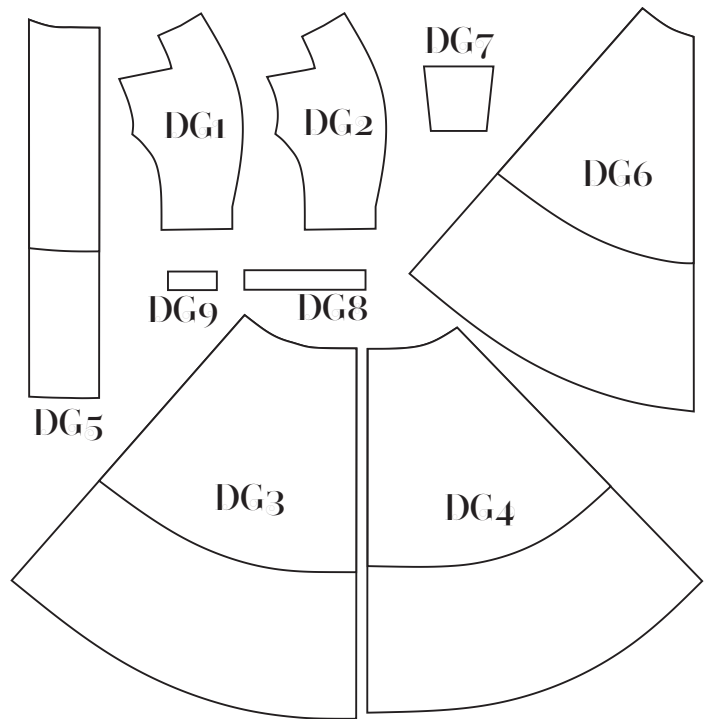
Cut 1 fabric, 1 lining

DG8. Elbow-Length Gathered Bell Sleeve Binding (Brunch Coat version only)

Cut 2

DG9. Bound Buttonhole Patch

Cut 1 fabric, 1 organza



These pieces are from the original Princess Coat pattern, and are to be used in conjunction with the expansion pieces above:

2. Bodice Side Front

Cut 2 fabric

3. Bodice Back

Cut 2 fabric

4. Bodice Side Back

Cut 2 fabric

9. Lantern/Bell Upper Sleeve (Brunch Coat version only)

Cut 2 fabric

14. Back Neck Facing

Cut 1 fabric on fold, 1 interfacing on fold

19. Bodice Lining Side Front

Cut 2 lining

20. Bodice Lining Back

Cut 1 on fold

21. Bodice Lining Side Back

Cut 2 lining

33. Upper Tailored Long Sleeve (Dressing Gown version only)

Cut 2 fabric

34. Under Tailored Long Sleeve (Dressing Gown version only)

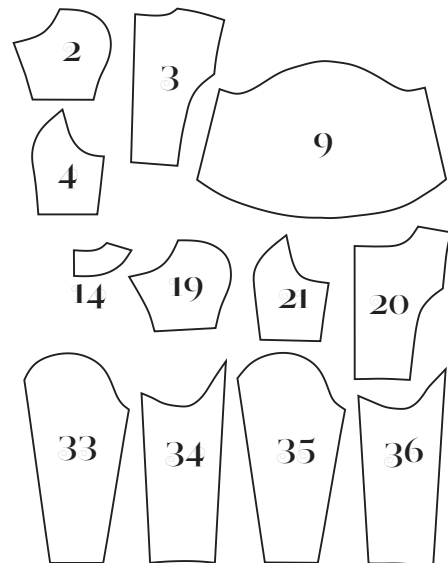
Cut 2 fabric

35. Upper Tailored Long Sleeve Lining (Dressing Gown version only)

Cut 2 lining

36. Under Tailored Long Sleeve Lining (Dressing Gown version only)

Cut 2 lining



REQUIRED YARDAGE & CUTTING LAYOUTS

Note: All pattern pieces are shown in a “without nap” layout. You may need additional yardage for directional prints, stripes, plaids, and other prints that need to be matched across seamlines. For fabric layouts, the pattern pieces are too wide for a conventional lengthwise cutting layout, so you must use a crosswise layout. The full width of the fabric is opened out and a fold is made perpendicular to the selvages.

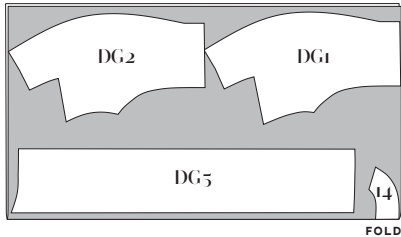
Interfacing

DG1, DG2, DG5, 14

all sizes

60 in	1/2 yd 1.4 m
-------	-----------------

NOTE: interfacing piece DG2 is optional.



KEY TO LAYOUTS



Right side of pattern piece



Wrong side of pattern piece

Be sure to note whether the pieces are cut on a double or single layer of fabric. For a double layer, there will be a note indicating FOLD on the layout.

Dressing Gown, Fabric

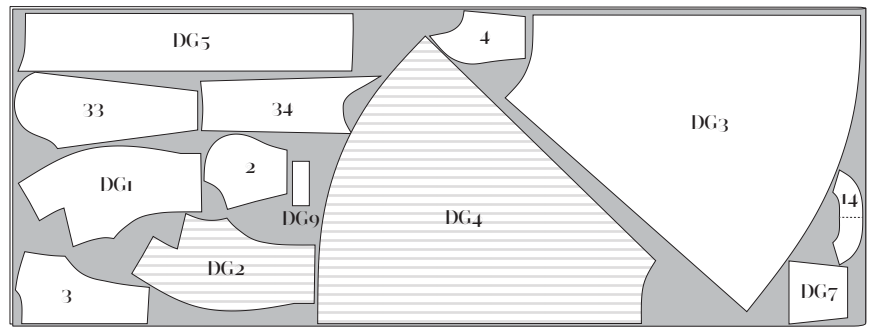
DG1-5, DG7, DG9, 2, 3, 4, 14, 33, 34

Sizes 2-10 Sizes 12-20

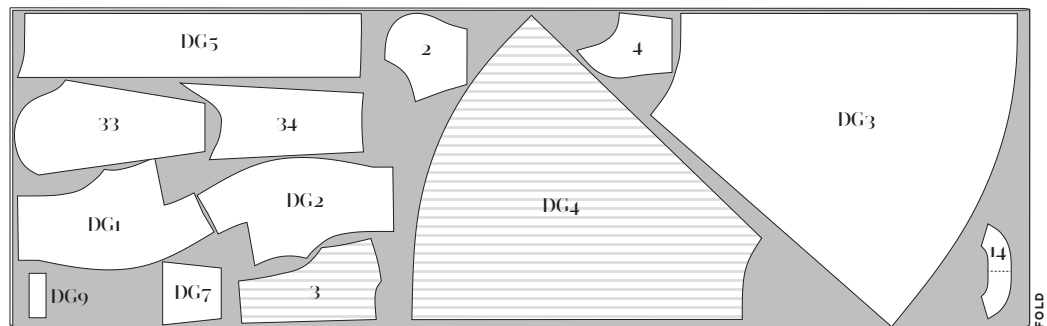
45 in	6¾ yd 6.2 m	8 yds 7.3 m
60 in	5¼ yds 4.8 m	6 yds 5.5 m

NOTE:

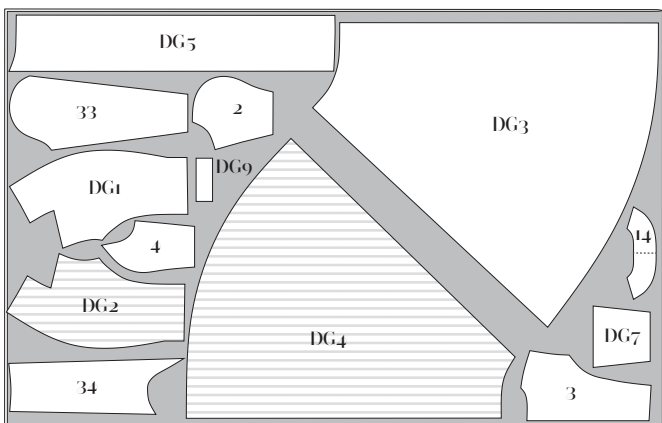
- Pieces DG7 and DG9 only need to be cut on a single layer of fabric.
- Also cut piece DG9 in organza for bound buttonhole openings in facing.
- Piece 14 needs to be cut once on the fold. Cut all other pieces first and then fold a single layer of fabric to cut piece 14.



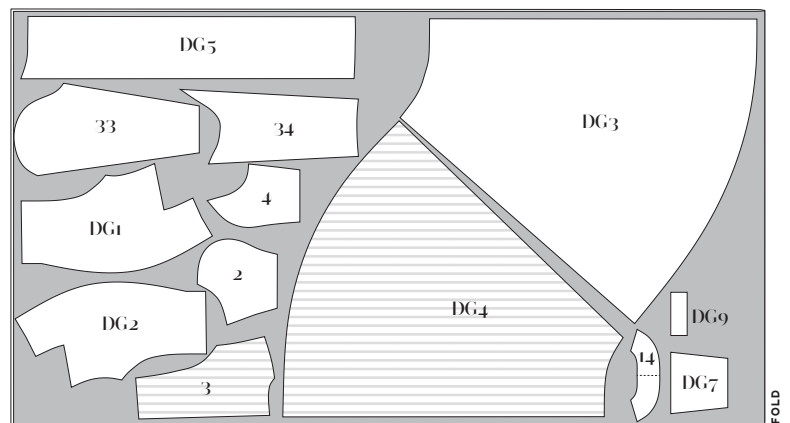
45 in, sizes 2-10



45 in, sizes 12-20



60 in, sizes 2-10



60 in, sizes 12-20

Dressing Gown, Lining

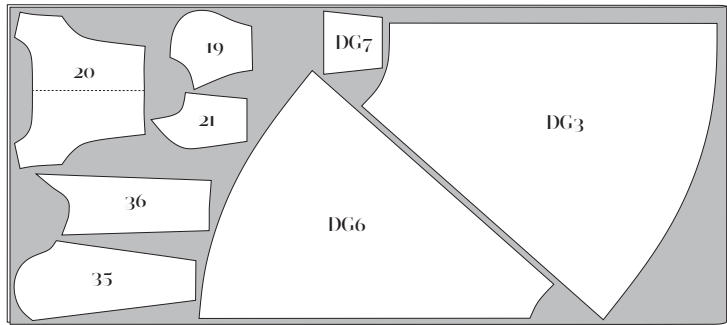
DG3, DG6, DG7, 19, 20, 21, 35, 36

Sizes 2-10 Sizes 12-20

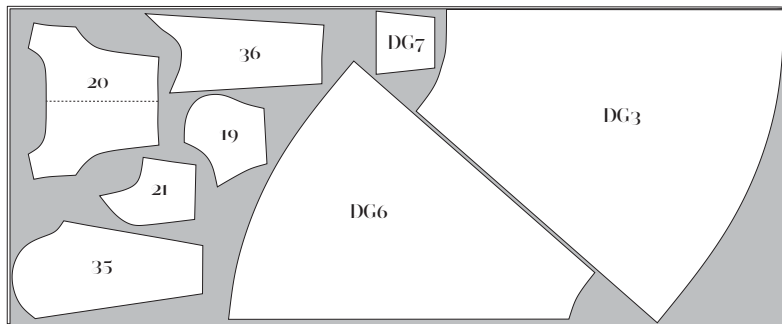
45 in	5 yds 4.6 m	6 yds 5.5 m
60 in	4½ yds 4.1 m	5 yds 4.6 m

NOTE:

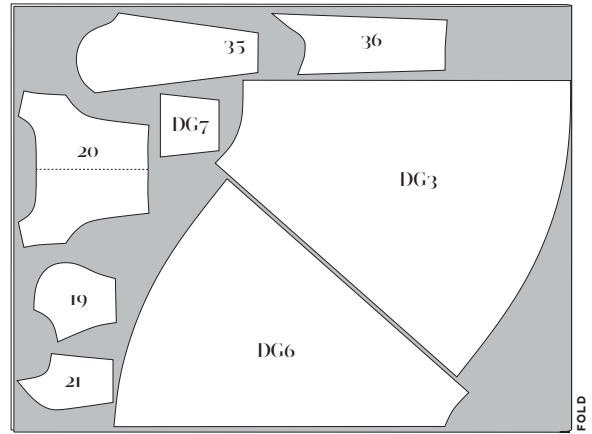
- Piece DG7 only needs to be cut on a single layer of fabric.
- Piece 20 needs to be cut once on the fold. Cut all other pieces first and then fold a single layer of fabric to cut piece 20.



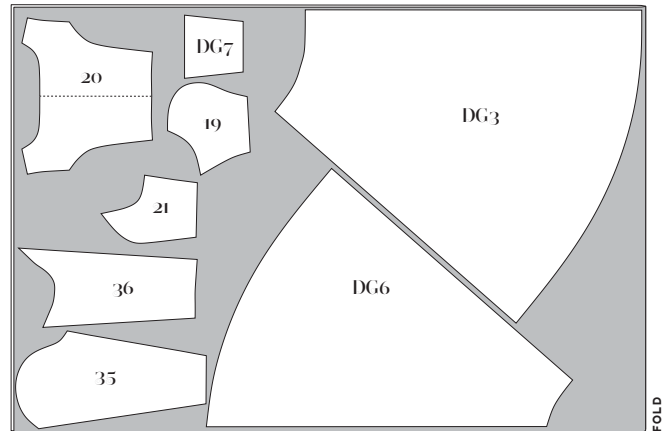
45 in, sizes 2-10



45 in, sizes 12-20



60 in, sizes 2-10



60 in, sizes 12-20

Brunch Coat, fabric

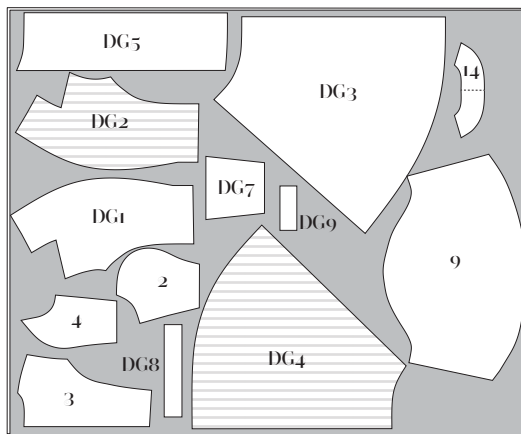
DG1-5, DG7-9, 2, 3, 4, 9, 14

Sizes 2-10 Sizes 12-20

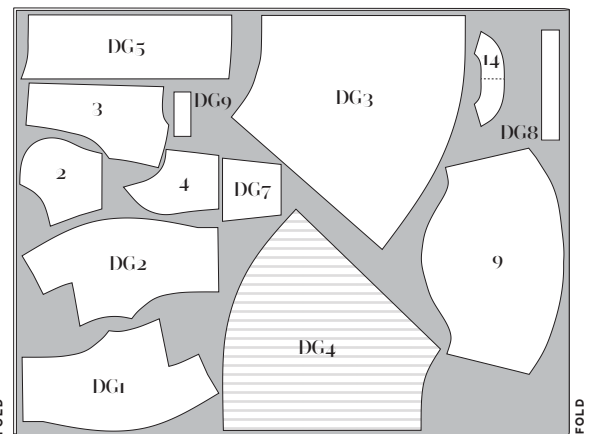
45 in	5 yds 4.6 m	6 yds 5.5 m
60 in	4 yds 3.7 m	4½ yds 4.1 m

NOTE:

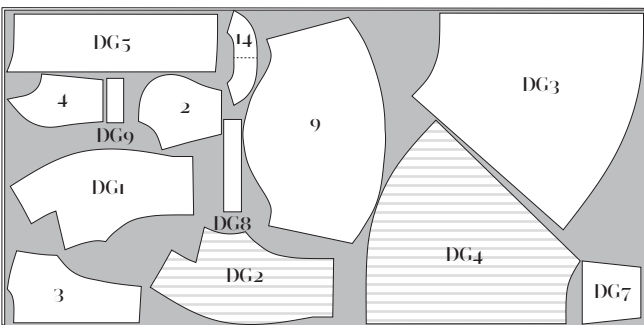
- Pieces DG7 and DG9 only need to be cut on a single layer of fabric.
- Also cut piece DG9 in organza for bound buttonhole openings in facing.
- Piece 14 needs to be cut once on the fold. Cut all other pieces first and then fold a single layer of fabric to cut piece 14.



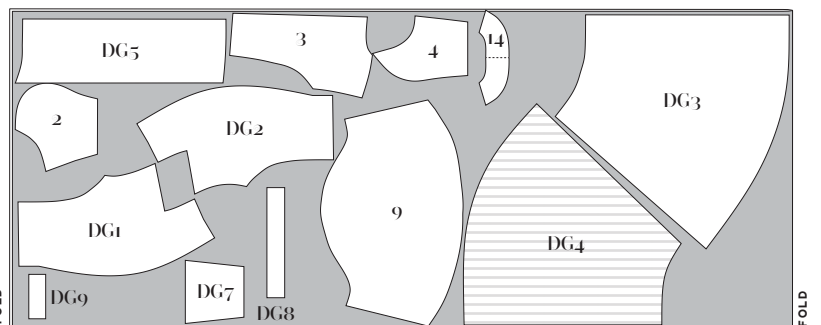
60 in, sizes 2-10



60 in, sizes 12-20



45 in, sizes 2-10



45 in, sizes 12-20

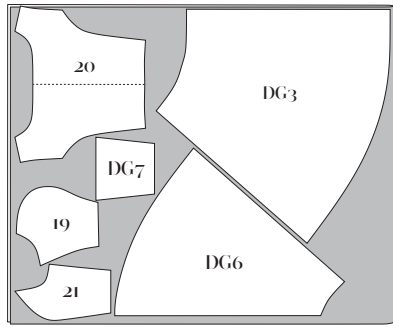
Brunch Coat, Lining

DG3, DG6, DG7, 19, 20, 21

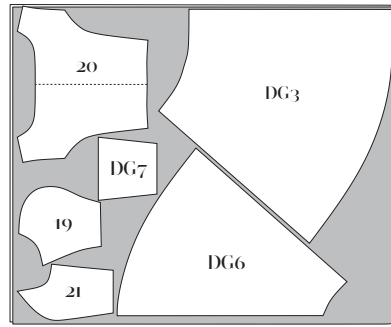
	Sizes 2-10	Sizes 12-20
45 in	3 yds 2.7 m	3½ yds 3.2 m
60 in	2½ yds 2.3 m	2¾ yds 2.5 m

NOTE:

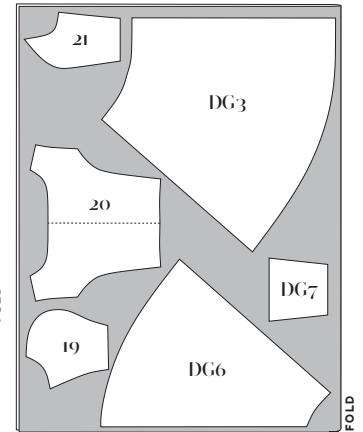
- Piece DG7 only needs to be cut on a single layer of fabric.
- Piece 20 needs to be cut once on the fold. Cut all other pieces first and then fold a single layer of fabric to cut piece 20.



45 in, sizes 2-10



45 in, sizes 12-20



60 in, sizes all sizes

PATTERN PIECE LOCATION GUIDE

Here is a list to help you locate the expansion pattern pieces on the letter-size tiled pages and A0 pattern sheets. The tiled pieces and A0 sheets are included as separate pdf files as part of this digital pattern.

PC#	Piece Name	Tiled	A0	PC#	Piece Name	Tiled	A0
DG1	Bodice/Undercollar Front	1-8	1	DG6	Skirt Front Lining	21-26, 36-41, 51-54, 65-68, 78-79	4-5
DG2	Bodice/Collar Facing	5-8, 10-13	2	DG7	Patch Pocket	8-9	4
DG3	Skirt Front	29-35, 44-50, 59-64, 73-77, 86-89	1-2	DG8	Elbow-Length Gathered Bell Sleeve Binding (Brunch Coat version only)	50-64	5
DG4	Skirt Back	26-29, 41-45, 54-59, 68-74, 79-86	3-4	DG9	Bound Buttonhole Patch	5	5
DG5	Skirt Front Facing	14-20	2, 5				

SEWING INSTRUCTIONS

NOTE: use $\frac{5}{8}$ in (1.5 cm) seam allowances on all seams.

CONSTRUCT COAT BODICE

Construct outer coat bodice as usual, substituting DG1 Bodice/Undercollar Front for pattern piece 1 in the Princess Coat Instructions (start with the bound buttonholes on pg. 26, noting the different position of the buttonholes and continue through pg. 33). Omit collar stand interfacing, back stay, and shoulder reinforcement steps.

CONSTRUCT TAILORED SLEEVES (DRESSING GOWN VERSION)

For **Dressing Gown sleeves**, follow instructions on pg. 36–38 for sewing and setting in the tailored sleeves.

CONSTRUCT GATHERED BELL SLEEVES (BRUNCH COAT VERSION)

1. For Brunch Coat sleeves, sew the underarm seam of the Bell Upper Sleeve (piece 9), as in step 1 on pg. 35 of the Princess Coat booklet. Press seam allowances open.

2. Gather lower edge of sleeve: sew two lines of gathering stitches within seam allowance. Place first line of gathering stitches $\frac{1}{2}$ in (1.3 cm) from raw edge and second line of gathering stitches $\frac{1}{4}$ in (6 mm) from raw edge. Pull up bobbin threads to gather.

3. Sew sleeve binding: press Elbow-Length Gathered Bell Sleeve Binding (DG8) in half lengthwise, WS together, to crease. Open up the binding and pin short ends, RS together, forming a ring. Stitch. Press seam allowances open. Pin one edge of binding to gathered lower edge of sleeve, RS together, matching notches and evenly distributing gathers. Stitch. Grade seam allowances so that sleeve's is narrower than binding's. Press binding over seam allowances. Fold binding along pressed crease, then turn under free seam allowance, enclosing graded seam allowances of sleeve and binding. Press, pin, and slipstitch invisibly in place by hand. Set sleeve into bodice as on pg. 36–38 of the Princess Coat booklet.

DRESSING GOWN/BRUNCH COAT SKIRT:

1. Sew the pocket: place pocket RS together with pocket lining and stitch all the way around the outer

edges, leaving a 2-in (5 cm) opening. Trim seam allowances and clip across corners. Turn RS out through opening and hand stitch opening closed. Press pocket flat. Place pocket on skirt right front at markings and pin in place. Edgestitch around sides and bottom, leaving top of pocket open.

2. Sew the skirt center back seam: pin Skirt Backs (DG4) RS together and stitch at center back. Press seam allowances open.

3. Sew skirt side seams: pin skirt back unit to Skirt Fronts (DG3), RS together, and stitch at side seams. Press seam allowances open.

4. Sew bodice to skirt: pin the skirt unit to the bodice unit, RS together, matching the side seams and notches. Stitch around the waistline. Grade the seam allowances so the bodice's is the widest. Clip into the waistline seam allowance about every $\frac{1}{2}$ in (1.3 cm) at the curviest part of the waist (on each side of the side seams). Press the seam allowances toward the bodice.

LINING/FACING UNIT

1. Reinforce facing's pivot point: stitch along reinforcement stitching line on Bodice/Collar Facing (DG2) and cut to pivot point.

2. Sew front princess seam: pin and stitch each Bodice Lining Side Front (19) to each Bodice/Collar Facing, as for outer coat. Stitch and press seam allowances open.

3. Sew facing center back collar seam: pin Bodice/Collar Facings RS together at back collar seam. Stitch. Press seam allowances open.

4. Prepare back bodice lining: sew pleat in Bodice Lining Back (20) by bringing pleat lines RS together at neckline and waistline. Stitch from WS along marked pleat lines, backstitching at beginning and end of stitching. Press pleat to one side. Staystitch neckline $\frac{1}{2}$ in (1.3 cm) from raw edge. Clip to staystitching every $\frac{1}{2}$ in.

5. Sew back princess seams: staystitch, pin, and sew back lining to Bodice Lining Side Back (21) as for outer bodice back princess seams, clipping and notching seam allowances the same way. Press seam allowances open.

6. Sew back neck facing to back lining unit: pin Back Neck Facing (14) to bodice lining back, RS together, spreading clips to match curves. Stitch. Press seam allowances toward lining.

7. Sew front lining/facing unit to back lining/facing unit: pin lining front to lining back at shoulders and side seams, RS together, and stitch. Press seam allowances open.

SLEEVE LININGS

Note: for the Brunch Coat version, I left the sleeves unlined. After sewing the bodice lining into the coat, baste the raw edges of the armholes together and finish the coat and lining armhole seam allowances as one.

1. Assemble sleeve linings as for outer sleeves (pg. 35–36), being sure to use correct sleeve lining pattern pieces.

2. Set sleeve linings into bodice lining unit as for outer coat sleeves, pg. 36.

SKIRT LINING

Assemble skirt lining as for outer skirt, substituting Skirt Front Lining (DG6) for Skirt Front and omitting pocket instructions. Sew Skirt Front Facings (DG5) to Skirt Front Linings.

SEW LINING WAISTLINE SEAM AND HEM

1. Pin the skirt lining/facing unit to the bodice lining/facing unit, RS together, matching the side and princess seams and notches. Stitch around the waistline. Grade the seam allowances so the bodice's is the widest. Clip into the waistline seam allowance about every ½ in (1.3 cm) at the curviest part of the waist (on each side of the side seams). Press the seam allowances toward the bodice.

ATTACH LINING TO DRESSING GOWN/BRUNCH COAT

1. Pin lining/facing unit to dressing gown/brunch coat, RS together, matching notches and seams. Stitch from one side of opening at hem, all the way around the collar, and down to the opposite hem.

2. Grade seam allowances so that the garment's is the widest and the facing's is narrower except on the collar (between the waistline points); in that area you will make the facing's seam allowance the widest and the garment's narrower. (Note that grading and understitching rules get reversed when an area of a garment rolls to the outside like this shawl collar.)

3. Understitch the undercollar: between the waistline points only, from RS, with the collar opened out from the coat and the seam allowances underneath the collar, stitch ⅛ in (3 mm) from the seamline, catching the seam allowances in the stitching.

4. Understitch the skirt facings: below the waistline only, from RS, with the facings opened out from the garment and the seam allowances underneath the facing, stitch ⅛ in (3 mm) from the seamline, catching the seam allowances in the stitching.

5. Press: turn the facings to WS and press the garment edge, rolling the seamline just to WS. If possible, place dressing gown/brunch coat on dress form and lightly steam to shape the lapel's roll line and collar.

FINISHING

1. Make openings in facing for bound buttonholes, as on pg. 51–53 of Princess Coat booklet, using the method of your choice.

2. Hem outer garment and lining: hang garment first and even up the hem after letting the bias portions stretch for at least 24 hours, leaving a ½-in (1.3 cm) to 1-in (2.5 cm) hem allowance for the garment and a ½-in hem allowance for the lining. Make sure the lining is about ½ in shorter than the outer garment. Press the hem allowances under and secure with the method of your choice, either hand stitching or machine topstitching the hems in place.

3. Follow finishing instructions on pg. 61–62 of Princess Coat booklet to stitch back neckline, hem sleeve linings, sew on buttons, and create optional swing tacks.

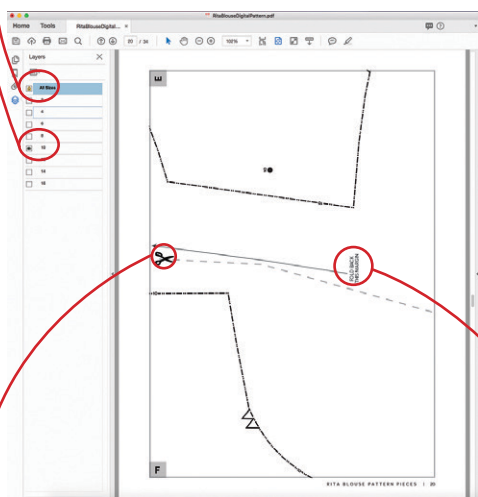
HOW TO USE THIS PATTERN

The pattern pieces are tiled so you can print them on Letter (8½ x 11) or A4 size paper. You can also send the A0 pattern sheet PDF to a local or online printer (like www.pdfplotting.com) to print on large sheets (36" x 48" for U.S. or A0 for international).

This pattern includes size layers. To get the best results, open either the Tiled or A0 pattern pieces PDF in Acrobat Reader.

Open the Layers Palette (View>Show/Hide>Navigation Panes>Layers) and hide all of the layer(s) except for the ones you want to print by clicking on the eye icon.

The All Sizes layer has general pattern information and will always print.



WORKING WITH THE TILED PIECES

Go to File>Print and change the page range to the pages you need for the pieces you've chosen (see Pattern Pieces Printing Index). Make sure the Page Sizing settings to 100% or Actual Size. Test this after printing by measuring the 1" test box on the first page of the bodice pattern pieces.

Cut apart any pattern pieces that share a page by cutting on the gray long dashed lines. Then fold back the page margins on each page as directed.

Tape the pages together, butting up the folded page edges with the gray margin lines, matching up the letters in gray boxes.

PURCHASE THE PRINCESS COAT

CHARMPATTERNS.COM

- Includes options for a total of 24 garments!
- A to H cup sizes
- Includes a 76-page instruction book
- Beautifully illustrated and full of vintage charm.



MORE FROM GERTIE



Purchase more patterns at charmpatterns.com.