

# CHARM PATTERNS *by Gertie*

## LORETTA SHORTS Sizes 2-20

5/8 inch (1.5 cm) seam allowances are included on all pattern pieces.

Page 1 of 2

### PAGE 1 PATTERN PIECES

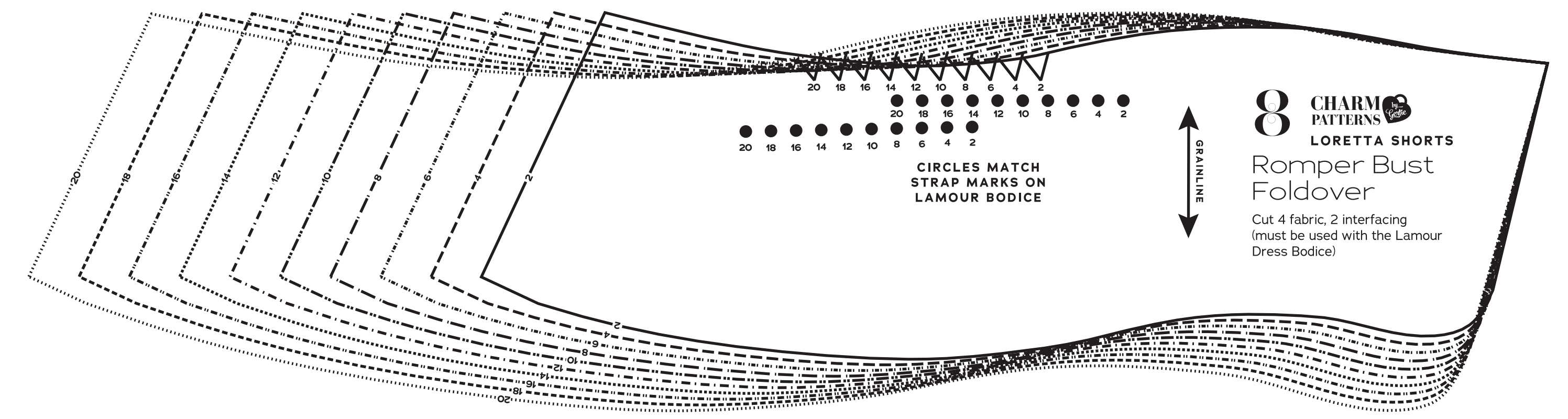
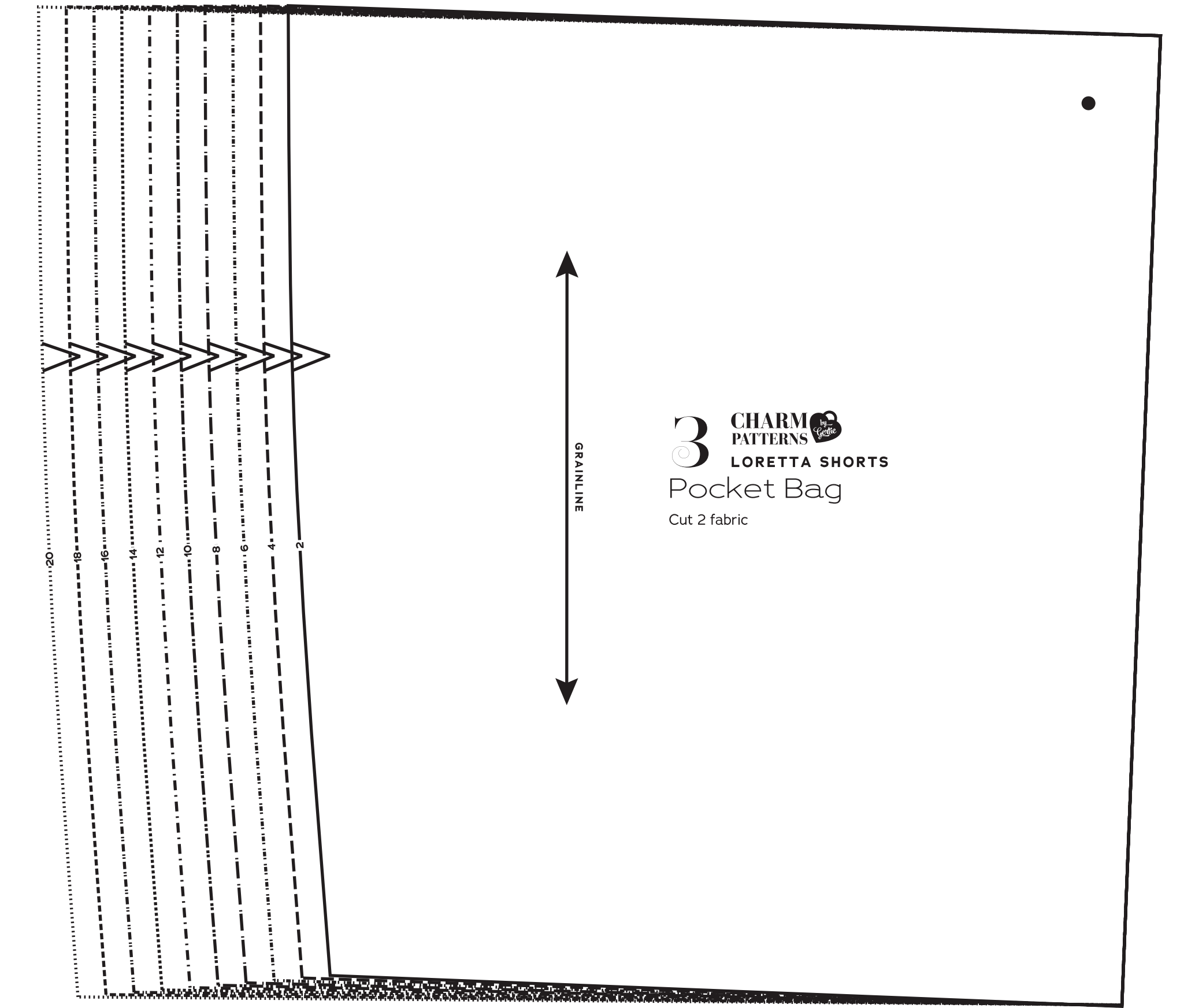
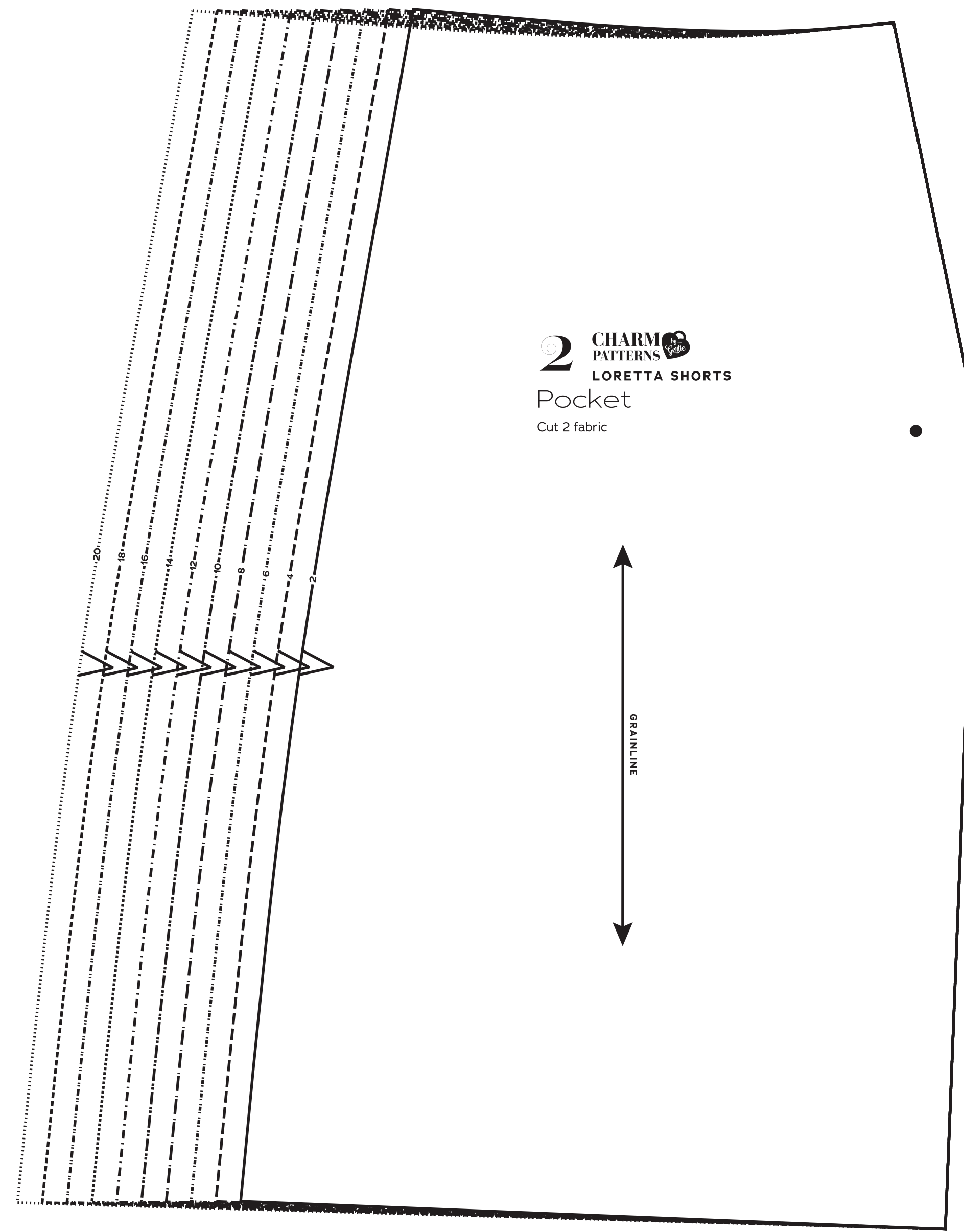
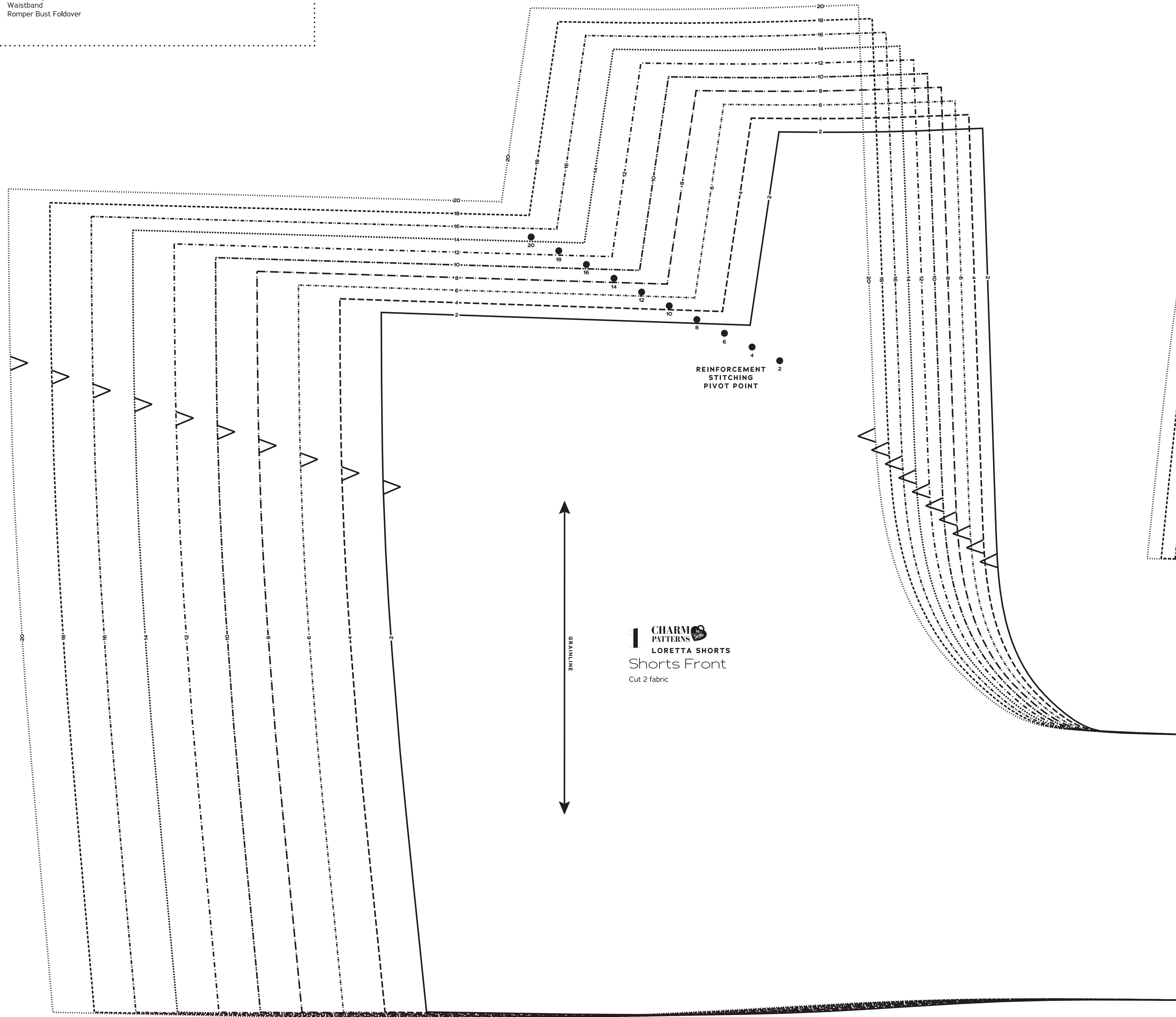
- 1 Shorts Front
- 2 Pocket
- 3 Pocket Bag
- 5 Waistband
- 8 Romper Bust Foldover

**PATTERN SIZE KEY**

2	-----
4	-----
6	-----
8	-----
10	-----
12	-----
14	-----
16	-----
18	-----
20	-----

**SYMBOL KEY**

- grainline arrow
- match point/ placement mark



# CHARM PATTERNS *by Gertie*

## LORETTA SHORTS Sizes 2-20

5/8 inch (1.5 cm) seam allowances are included on all pattern pieces.

Page 2 of 2

### PAGE 2 PATTERN PIECES

- 4 Shorts Back
- 6 Bib
- 7 Bib Pocket

**PATTERN SIZE KEY**

2	-----
4	-----
6	-----
8	-----
10	-----
12	-----
14	-----
16	-----
18	-----
20	-----

**SYMBOL KEY**

↔	grainline arrow
↔	match point/ placement mark
•	placement mark

