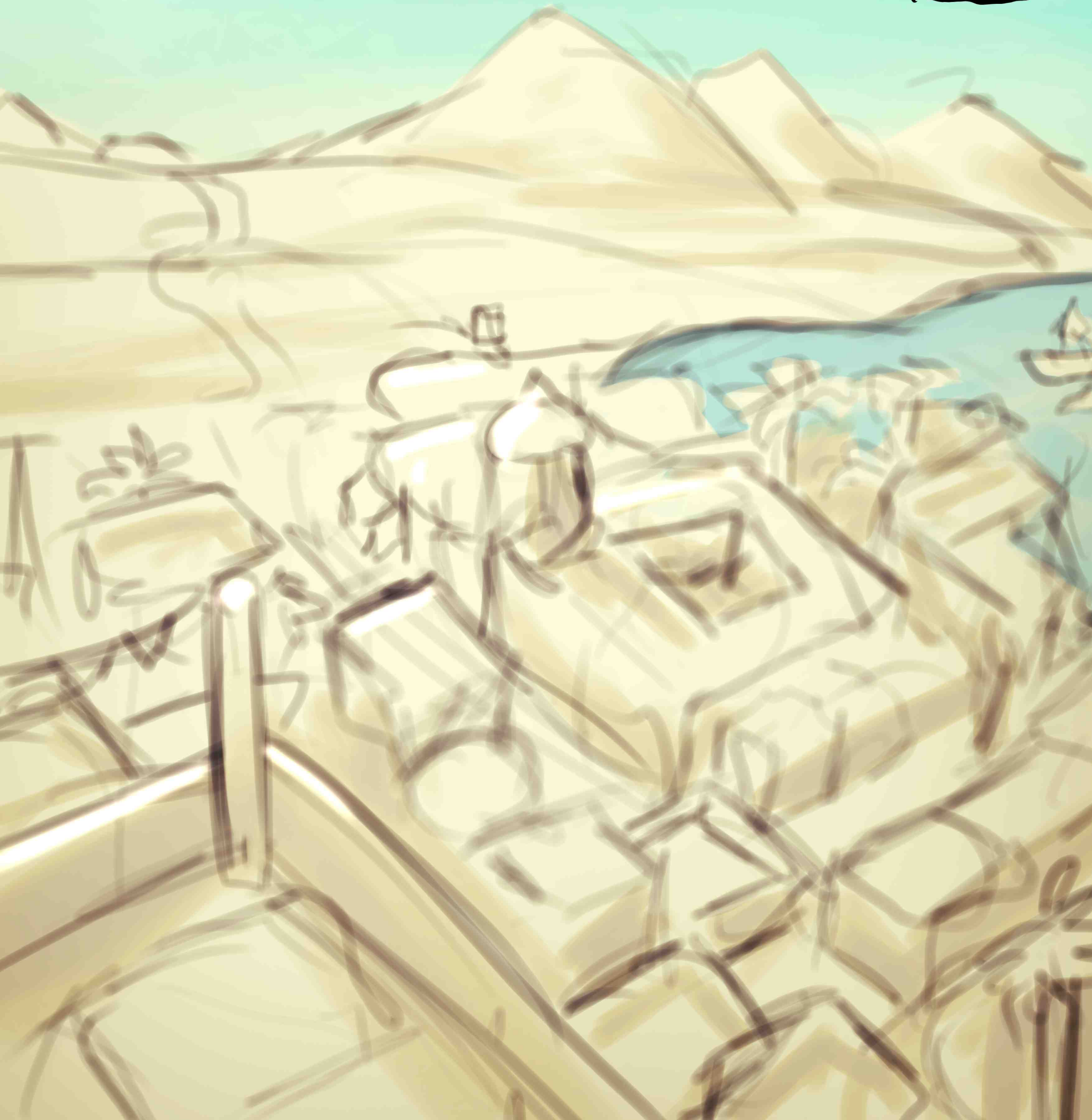


A TASTE OF **SORCERY**





Lapal , Siffo & Eri

Written and illustrated

by

Hermia Idril



Mmm this should be..

Ah yeah! This is the place



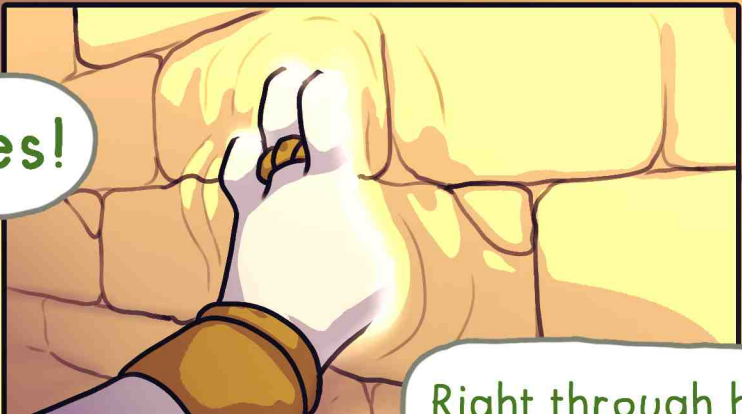
This random alley? I thought we were heading to your friends shop?

We are.

Now let's see if I remember this right.



Hmm should be this one



Yes!

Right through he-





Ehhm

Eri?...

...

No? ok..

Alright Siffo you can do it just like Eri.



Fwoosh

There you are sweetie.

What was that?

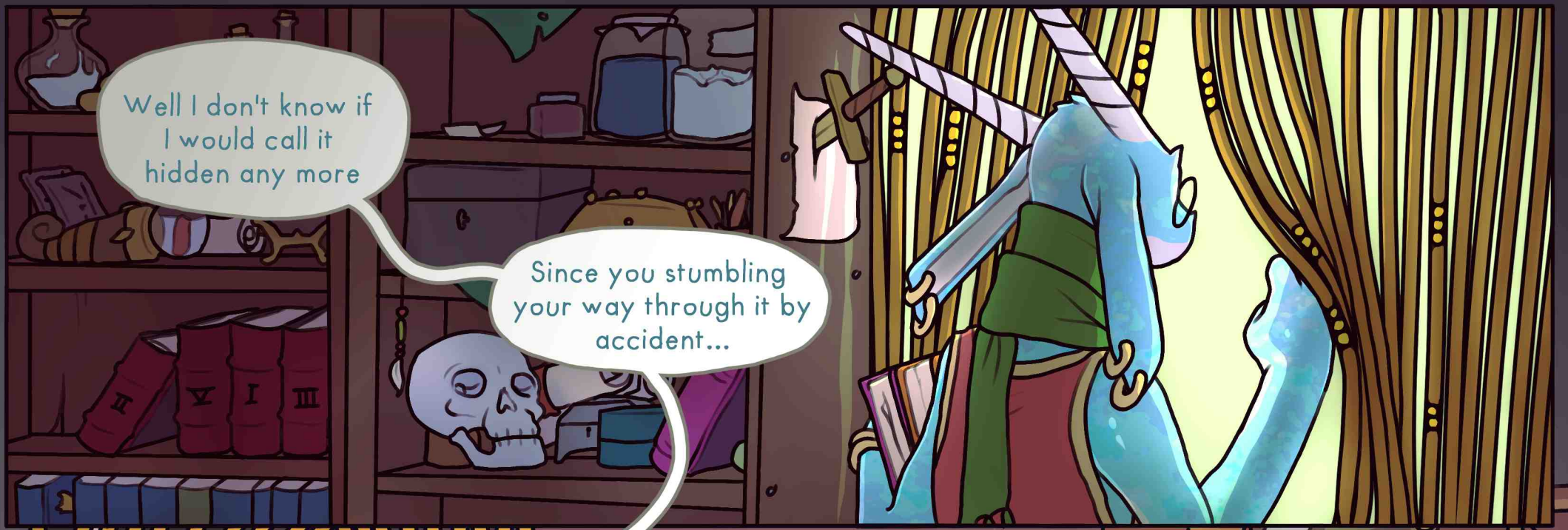
It didn't feel like an illusion

It's a hidden plane shift spell.

This place is lodged between planes

So hidden passageways by Lapal, like this one are the best way to get here.

Explains why the air got cooler.



Don't Really know what avenues you've explored in your exploits into the world of magic.

But I do believe I have most of what a Junior magician might need

Magical Staffs

Enchanted rings

Powerful tomes

spell foci

Even magical potions for those who dabble in the alchemical.

Well those all sound quite interesting and helpful to me.

But reason we are seeking you out, is for my fiancé

-it's...

..because I need some help with my magic

Oh?

Well, how do I put this ...

I need your help finding some means to connect me to the flow of magic in the way Eri, and I can only assume, you are.

I've read all the books Eri has on magic and have tried all manner of spells. But no matter how I try I can't get it to work.

Just feels like trying to light a fire without fuel.

Eri said you'd helped her before and might be able to help me.

So can you help me figure out just what I'm doing wrong?...

Newpages
Soon