











# CHARM PATTERNS

## LORETTA SHORTS

Sizes 2-20

5/8 inch (in) (1.5 cm) seam allowances are included on all pattern pieces.

### PATTERN SIZE KEY

2	
4	
6	
8	
10	
12	
14	
16	
18	
20	

### SYMBOL KEY

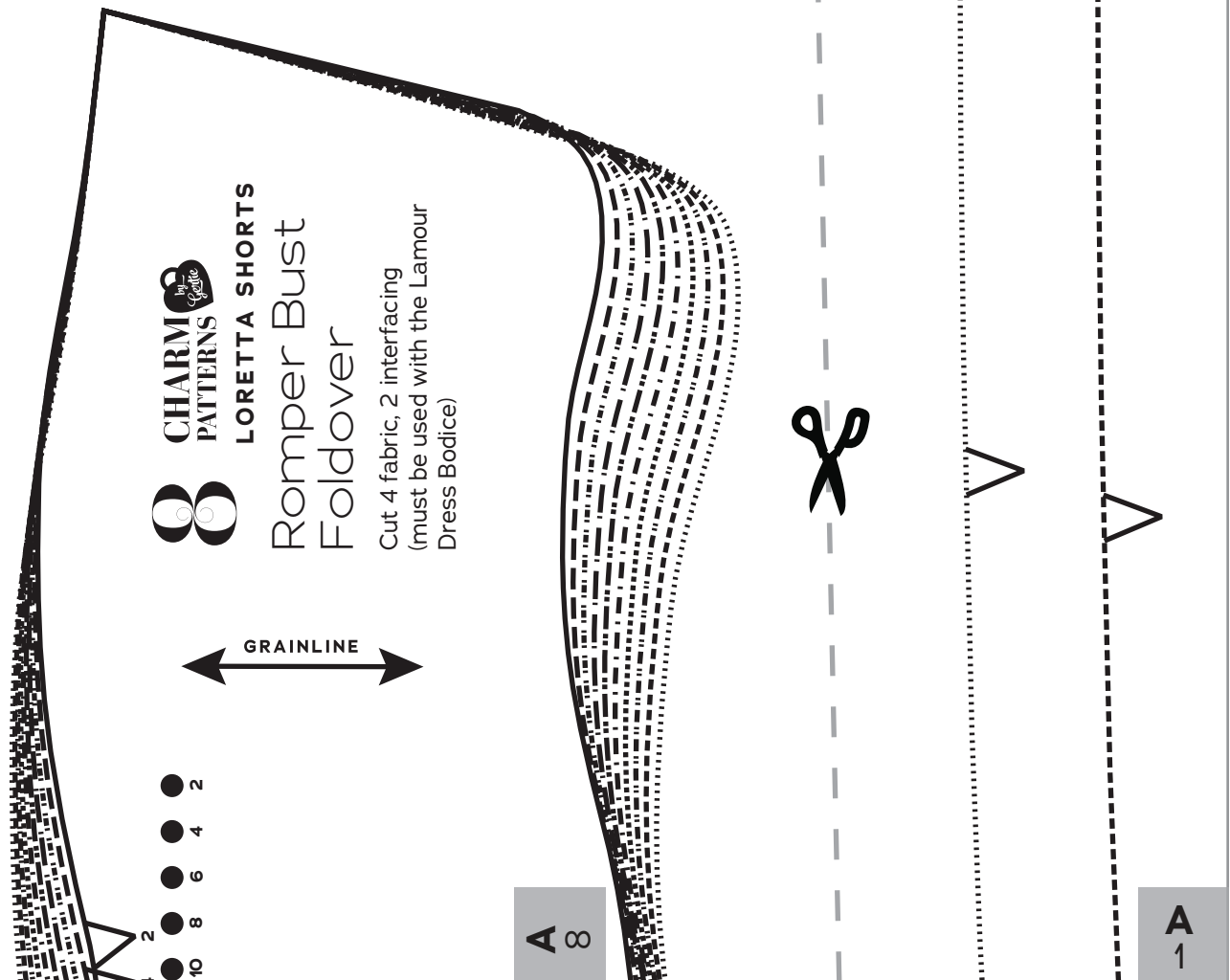
grainline arrow

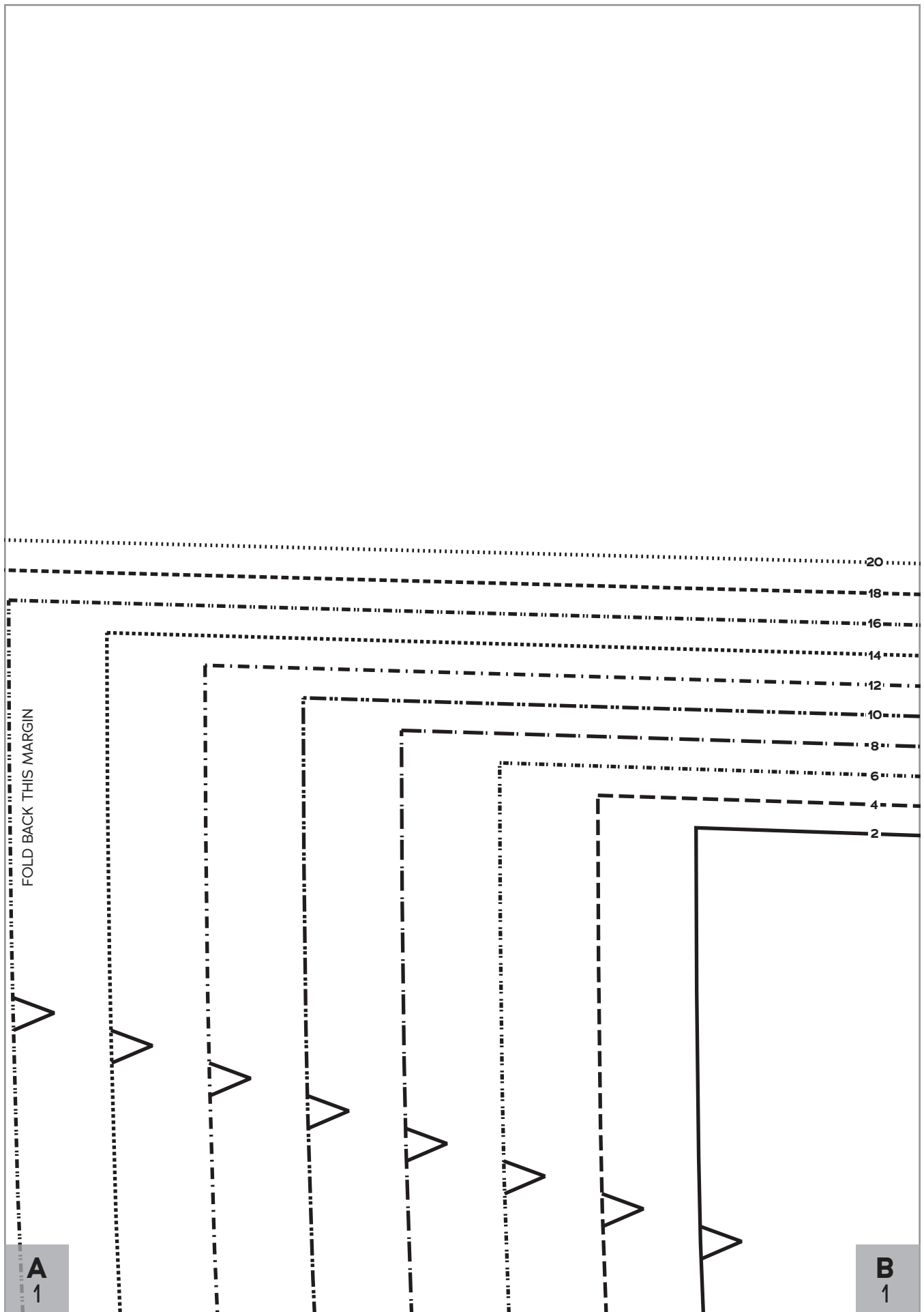


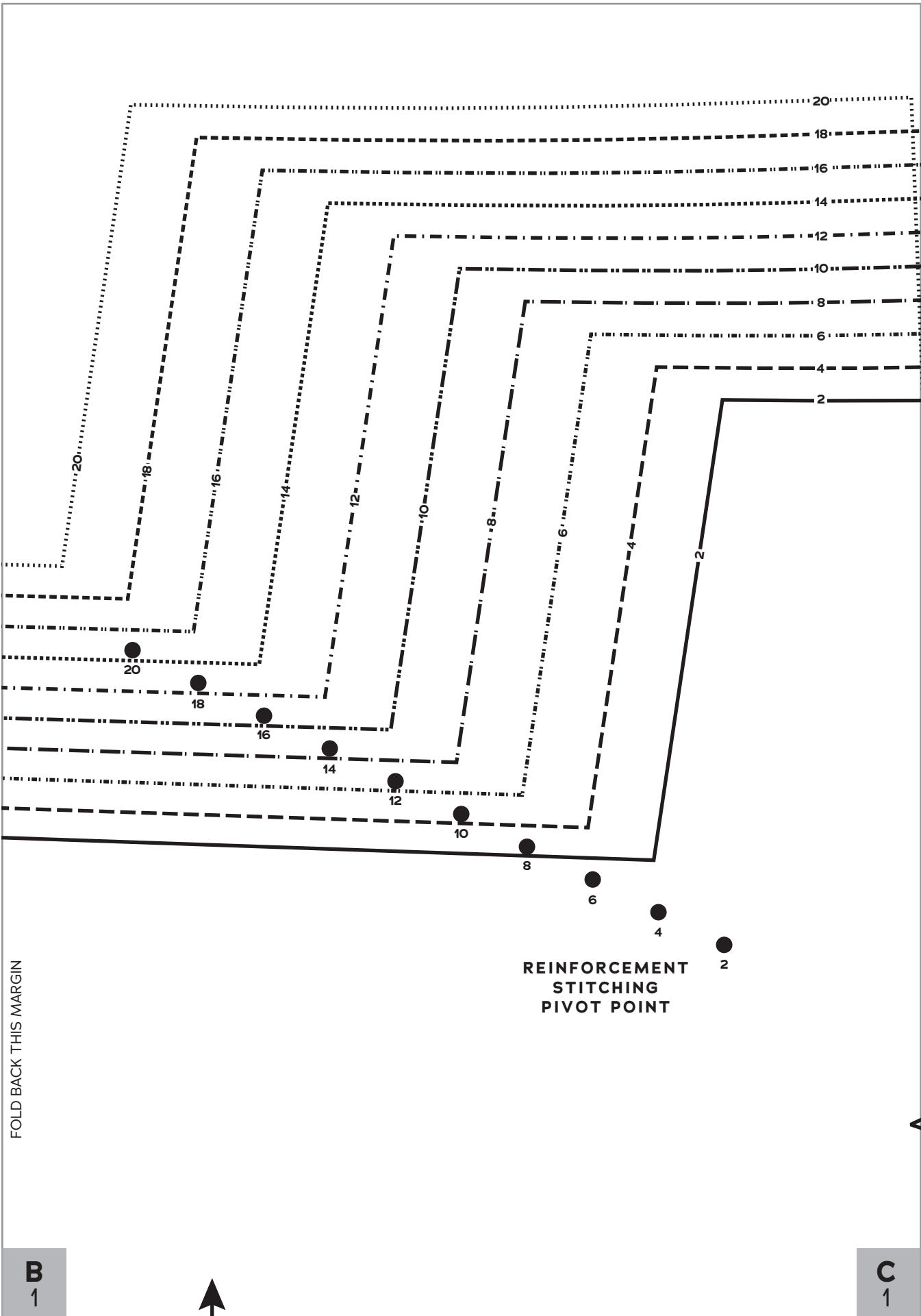
match point/  
placement mark



**1" test square**





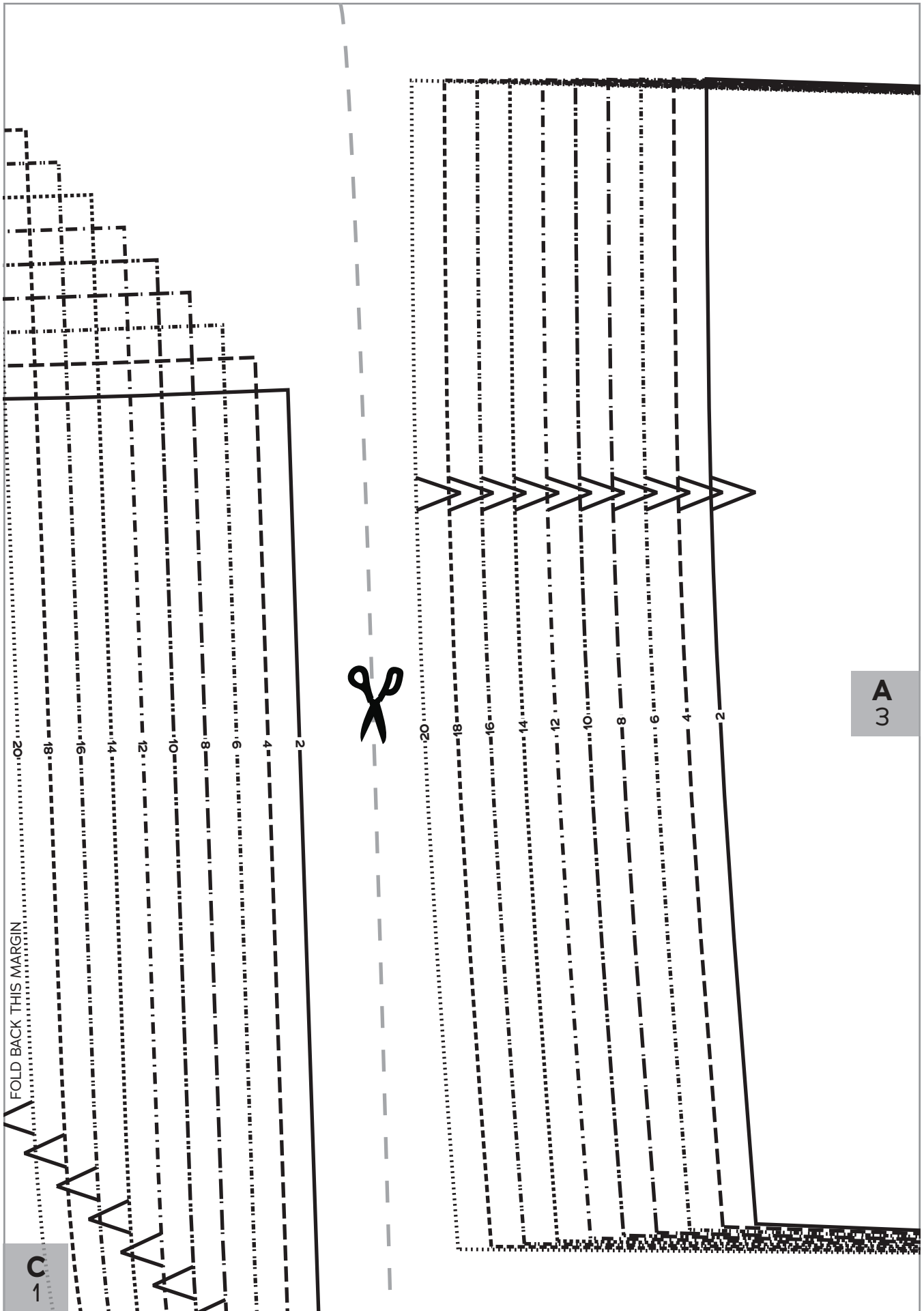


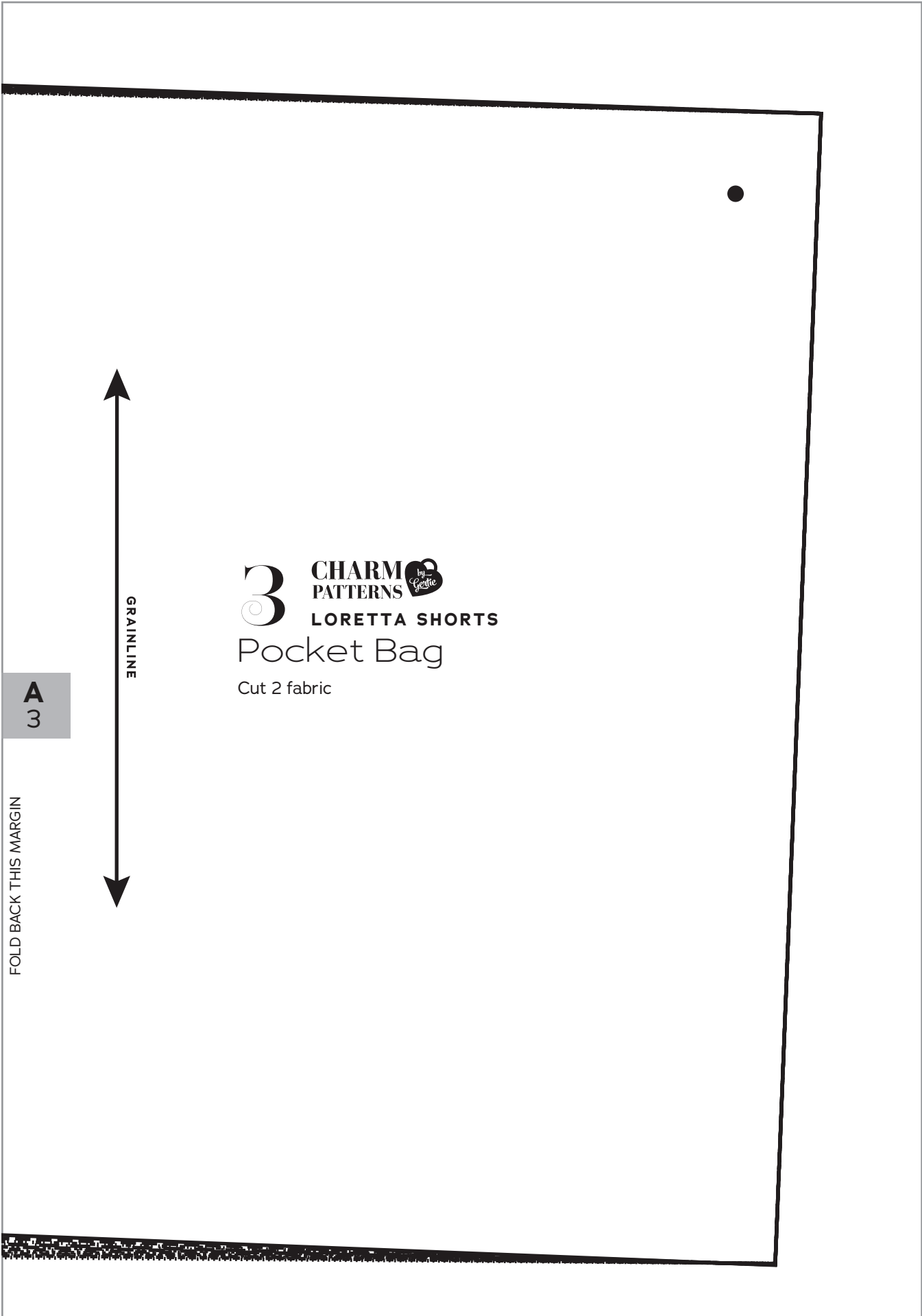
FOLD BACK THIS MARGIN

REINFORCEMENT  
STITCHING  
PIVOT POINT

**B**  
1

**C**  
1



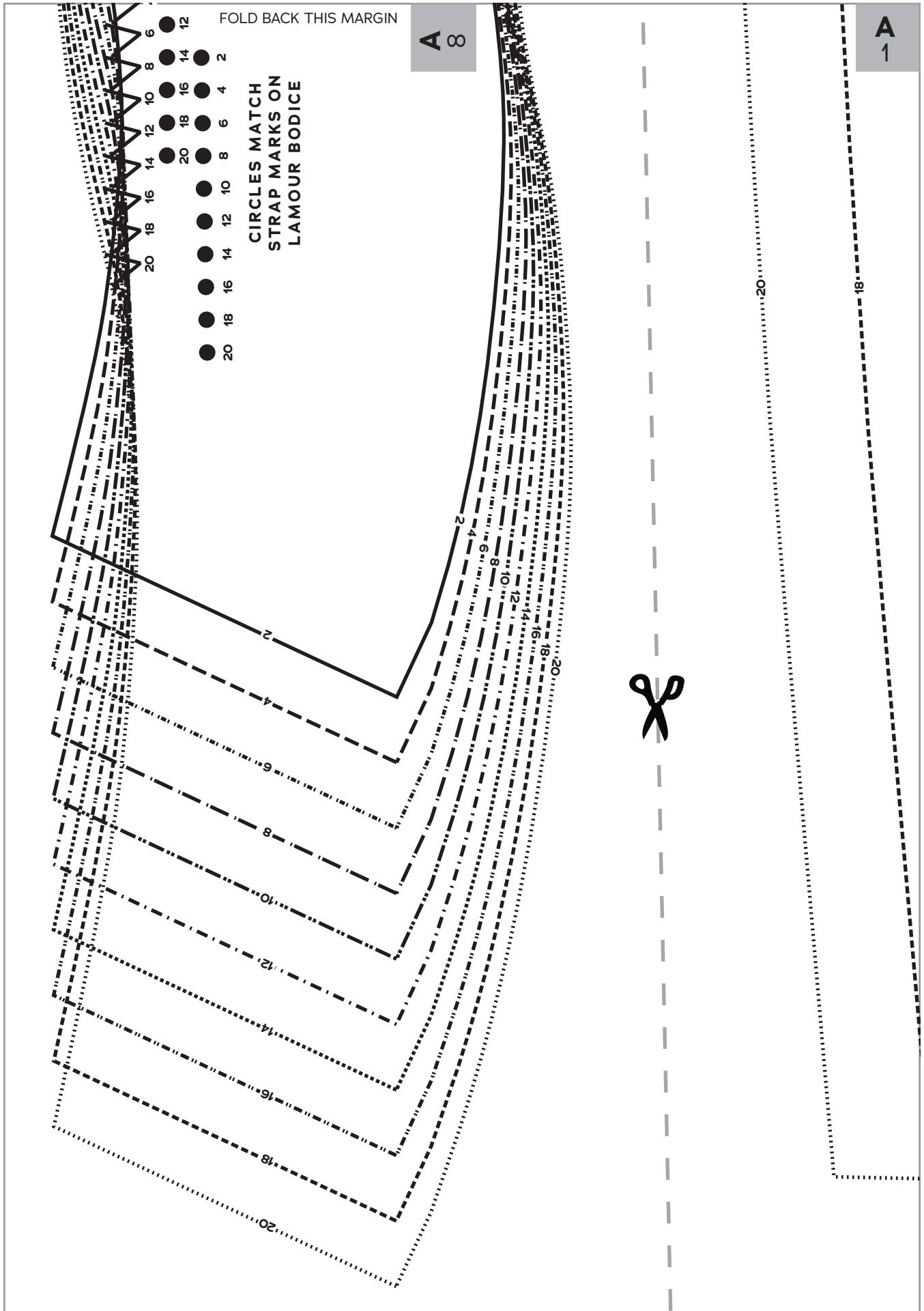


**3** CHARM by Genie  
PATTERNS  
**LORETTA SHORTS**  
Pocket Bag

Cut 2 fabric

**A**  
3

FOLD BACK THIS MARGIN



FOLD BACK THIS MARGIN

A 8

A 1

CIRCLES MATCH  
STRAP MARKS ON  
LAMOUR BODICE

- 20 18 16 14 12 10 8 6 4 2
- 20 18 16 14 12 10 8 6 4 2
- 20 18 16 14 12 10 8 6 4 2
- 20 18 16 14 12 10 8 6 4 2
- 20 18 16 14 12 10 8 6 4 2
- 20 18 16 14 12 10 8 6 4 2
- 20 18 16 14 12 10 8 6 4 2
- 20 18 16 14 12 10 8 6 4 2
- 20 18 16 14 12 10 8 6 4 2
- 20 18 16 14 12 10 8 6 4 2



**A**  
1

FOLD BACK THIS  
MARGIN

**B**  
1

FOLD BACK THIS MARGIN

16

14

12

10

8

6

4

2

**B**  
1

FOLD BACK THIS MARGIN

**C**  
1

GRAINLINE



**1** **CHARM** *by Petite*  
**PATTERNS**  
**LORETTA SHORTS**  
Shorts Front  
Cut 2 fabric

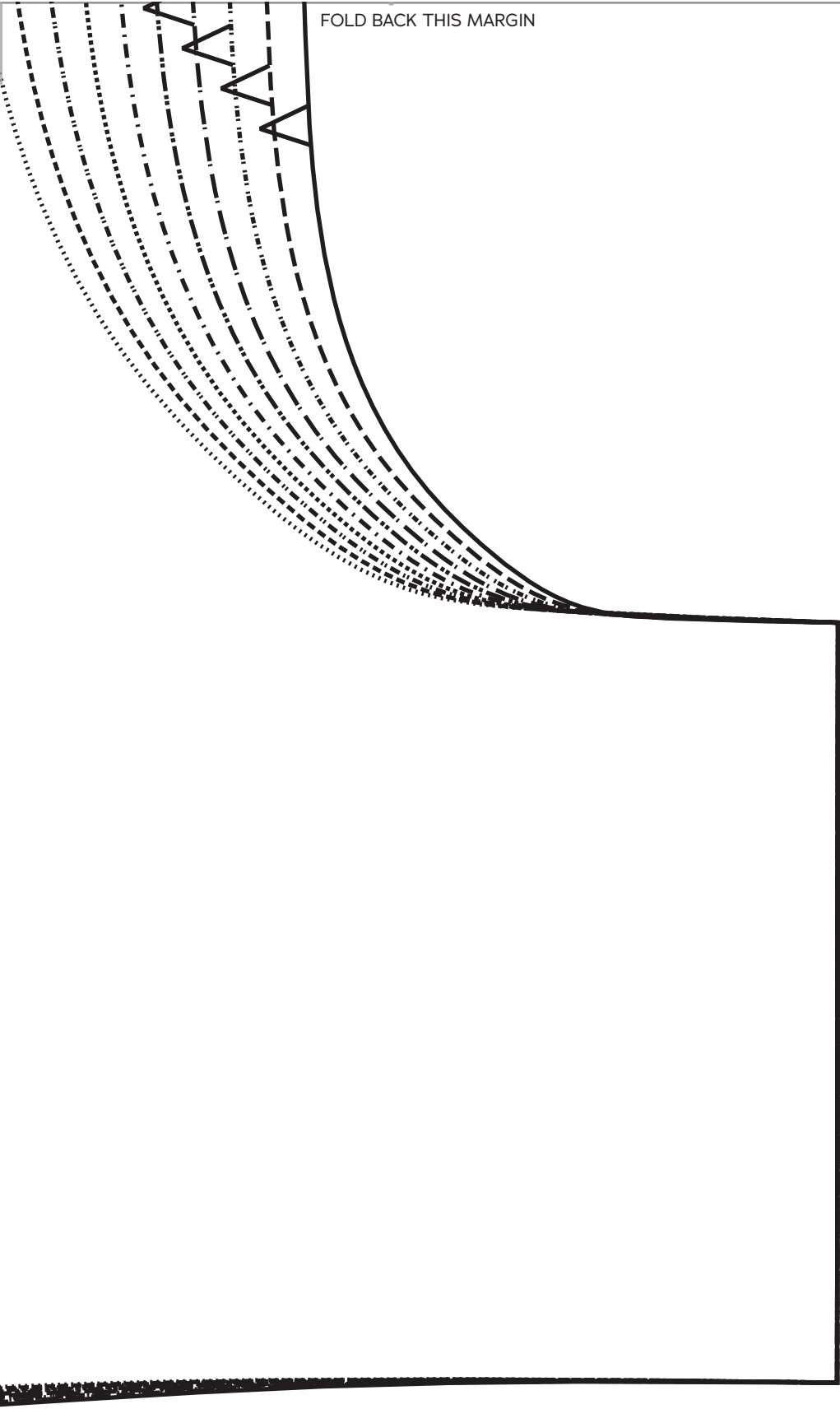
FOLD BACK THIS MARGIN



C  
1

FOLD BACK THIS MARGIN

FOLD BACK THIS MARGIN

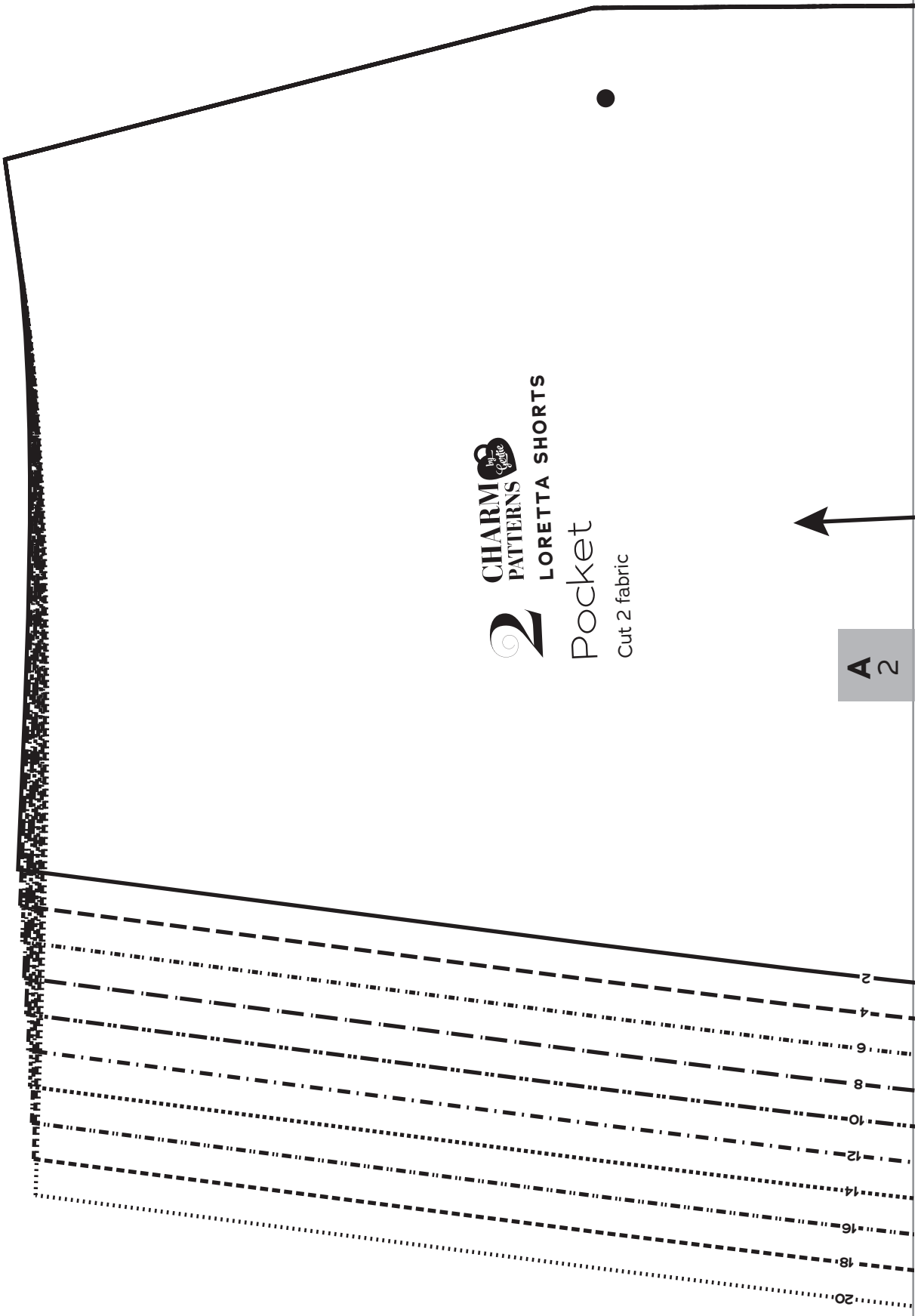


**CHARM**  
PATTERNS  
LORETTA SHORTS

**2**

Pocket  
Cut 2 fabric

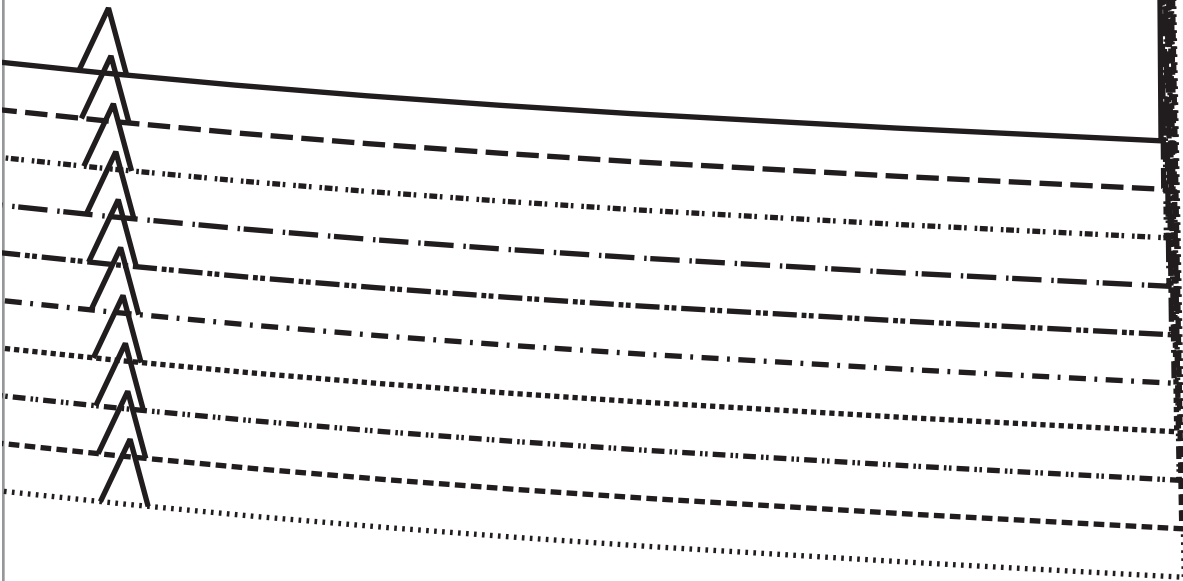
A 2

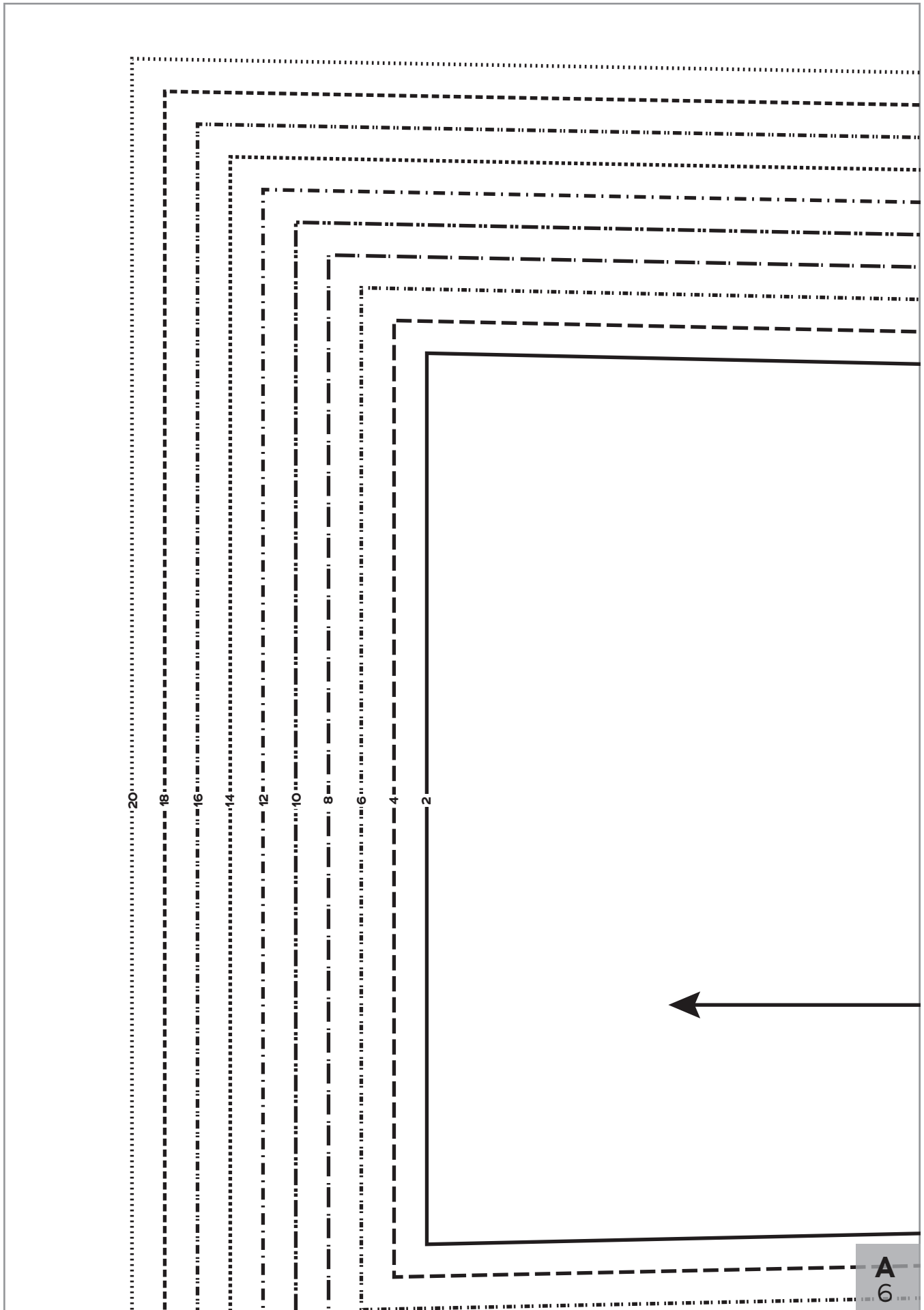


FOLD BACK THIS MARGIN

GRAINLINE

A  
2





A  
6

FOLD BACK THIS MARGIN



**CHARM  
PATTERNS**

**LORETTA SHORTS**

**Bib**

Cut 2 fabric, 1 interfacing (must be used with straps from the Stanwyck Skirt)

GRAINLINE

**BUTTONHOLE  
PLACEMENT**

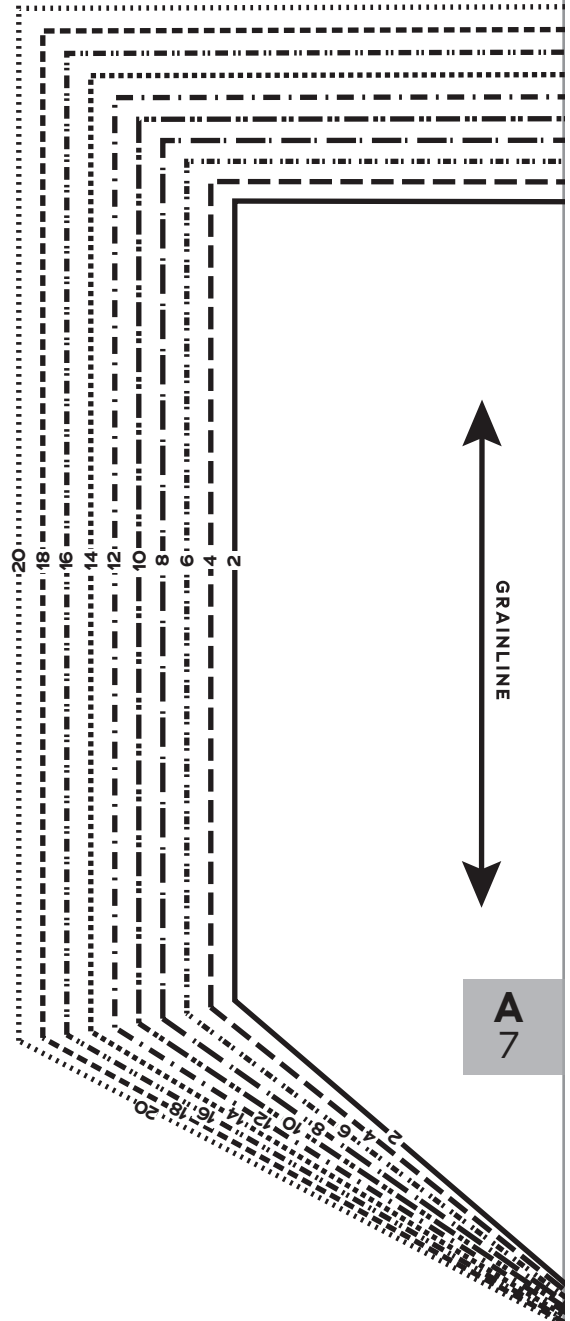


20  
18  
16  
14  
12  
10  
8  
6  
4  
2

A  
6  
4  
2

FOLD BACK THIS MARGIN

A  
6



A  
6

FOLD BACK THIS MARGIN

8  
10  
12  
14  
16  
18  
20



20  
18  
16  
14  
12  
10  
8  
6  
4  
2

FOLD BACK THIS MARGIN



CHARM  
PATTERNS  
by  
Jenise

LORETTA SHORTS

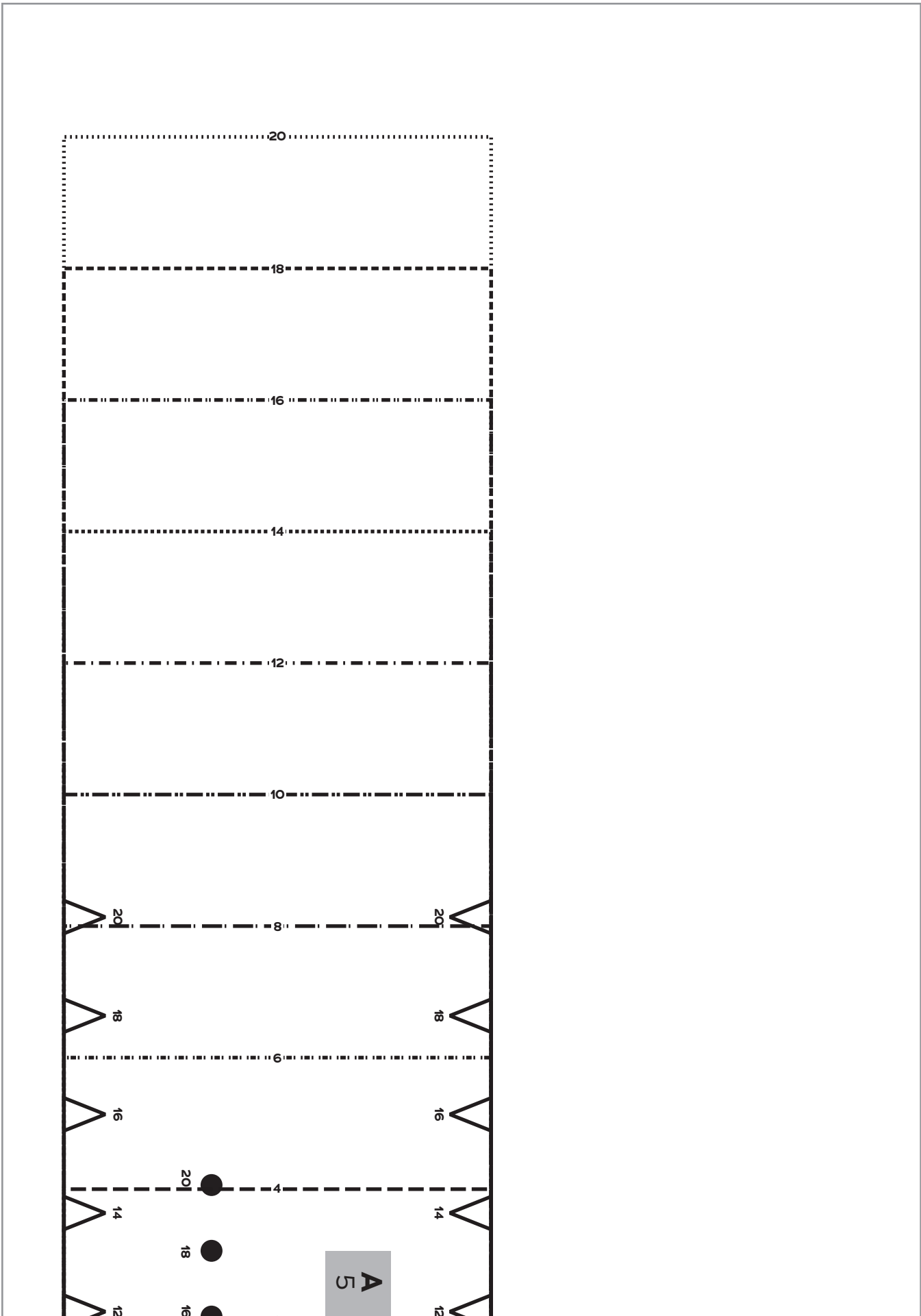
Bib Pocket

Cut 1 fabric

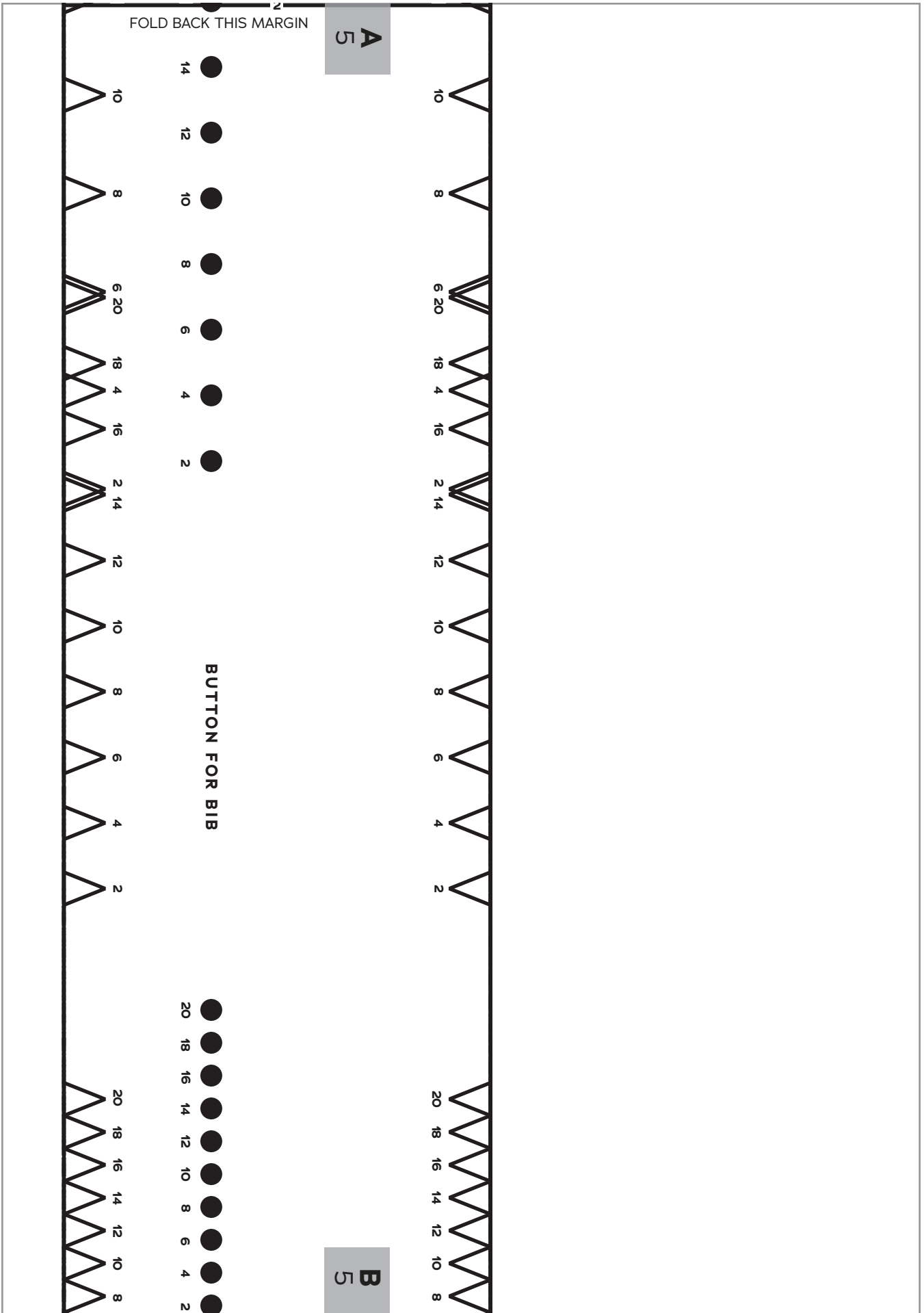
2 4 6 8 10 12 14 16 18 20

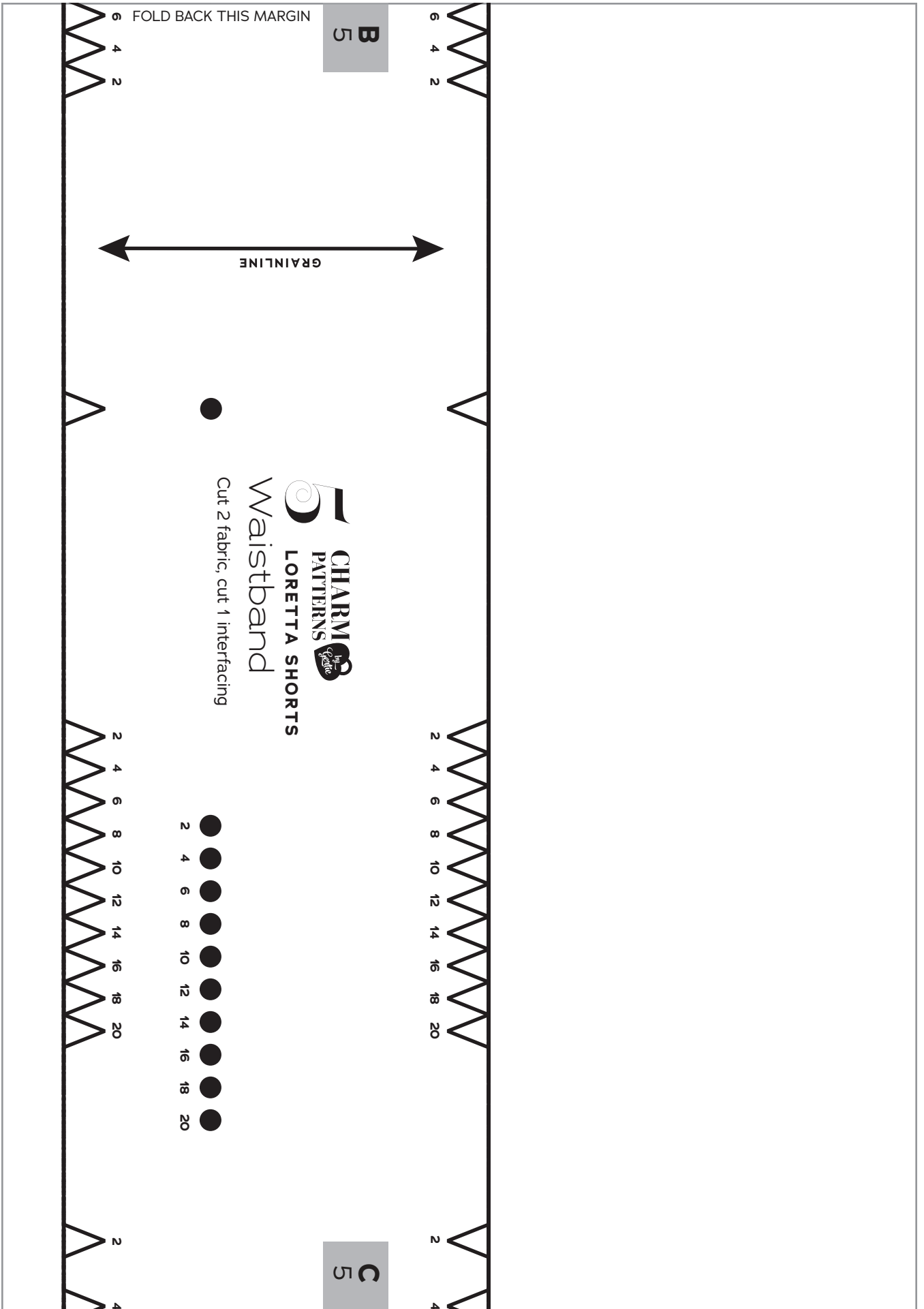
A  
7

2 4 6 8 10 12 14 16 18 20



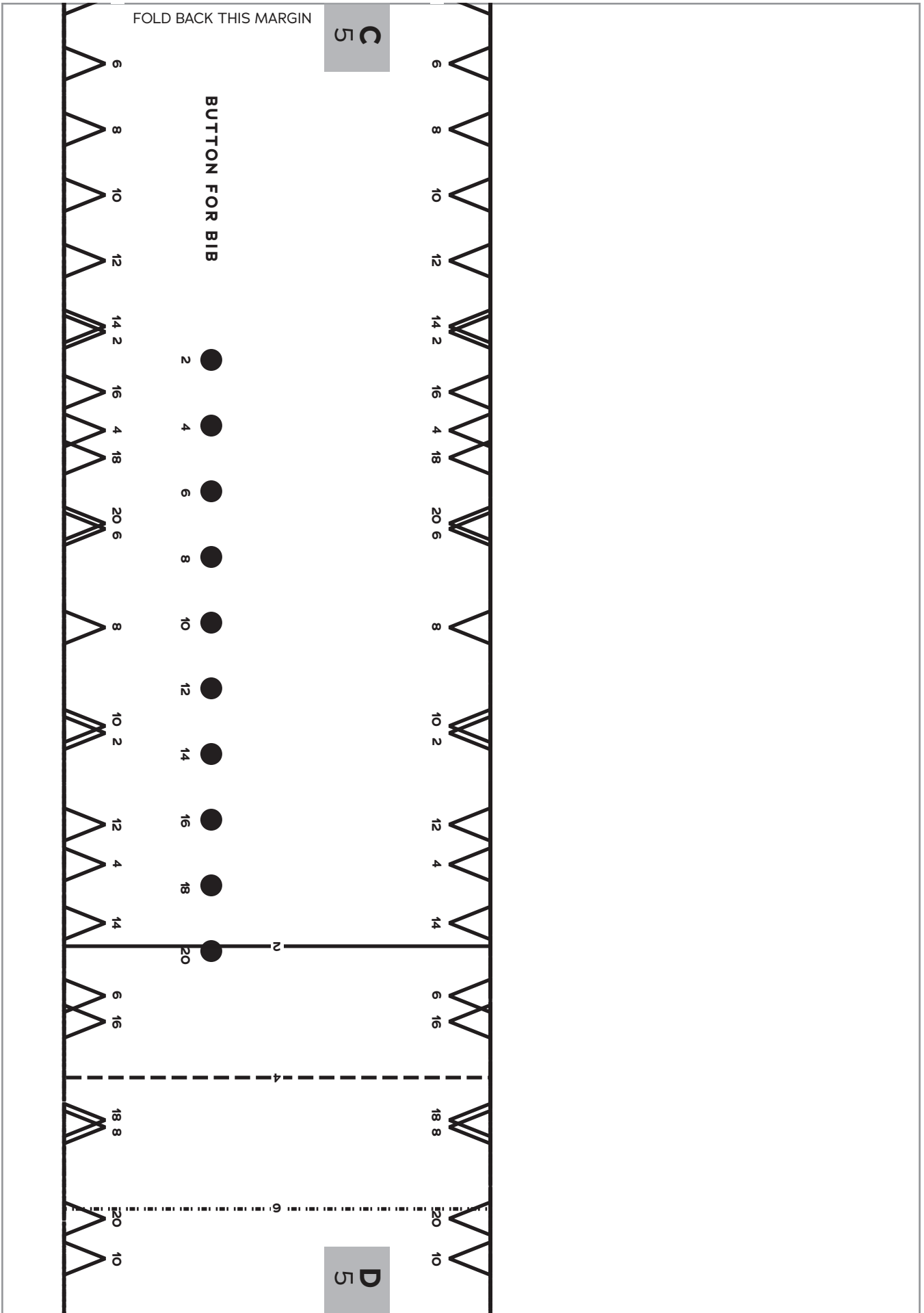


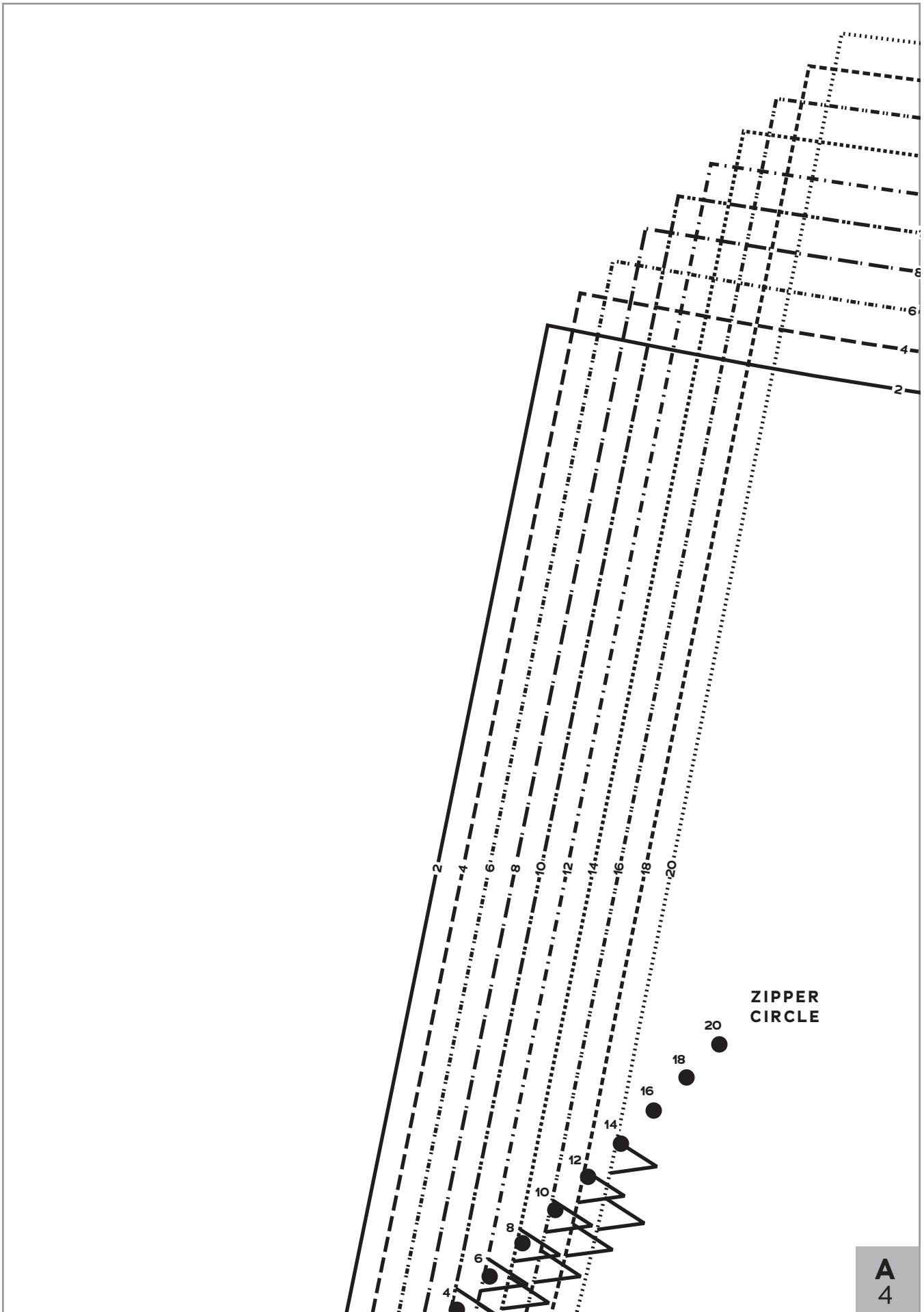




**B**  
5

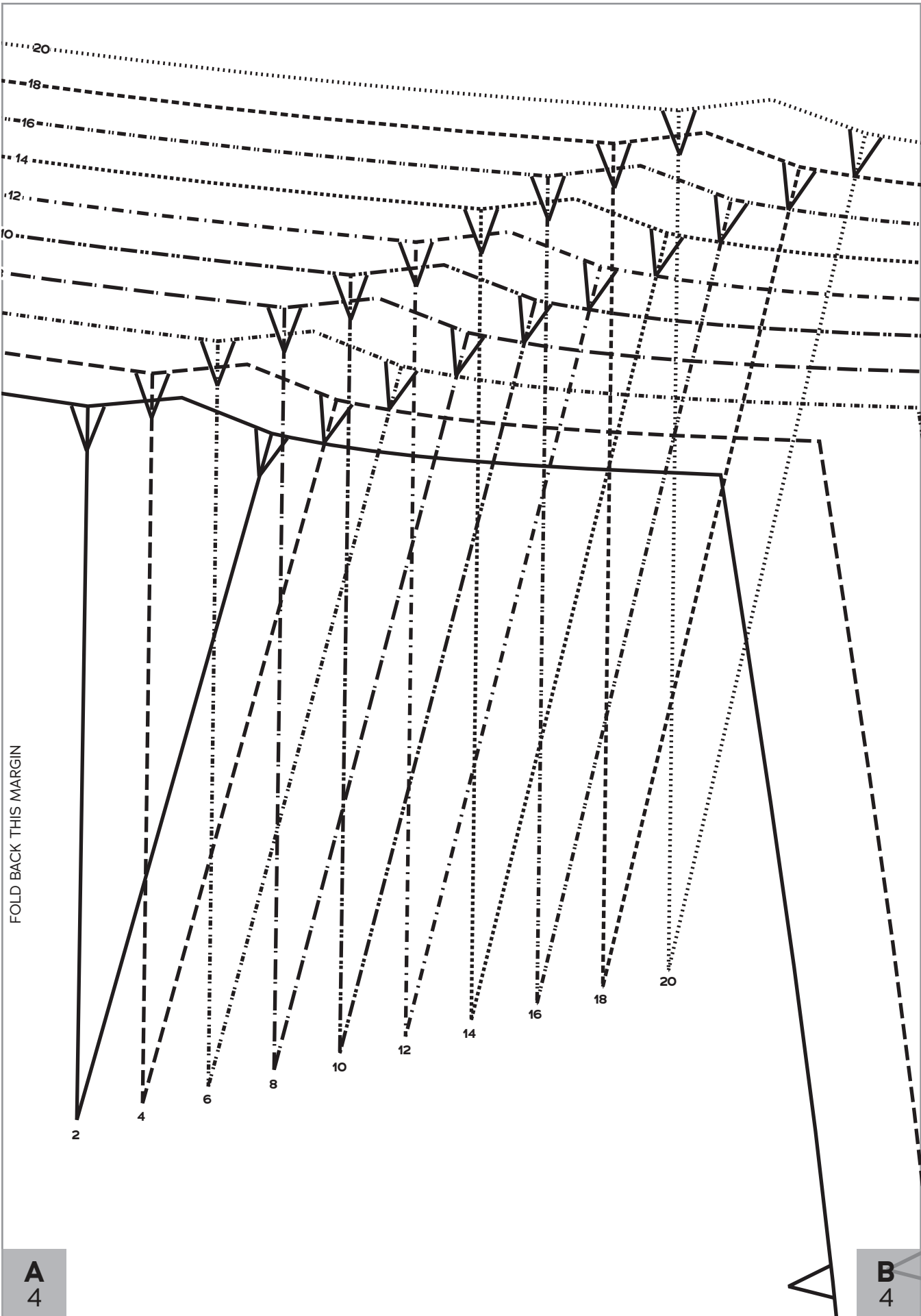
**C**  
5





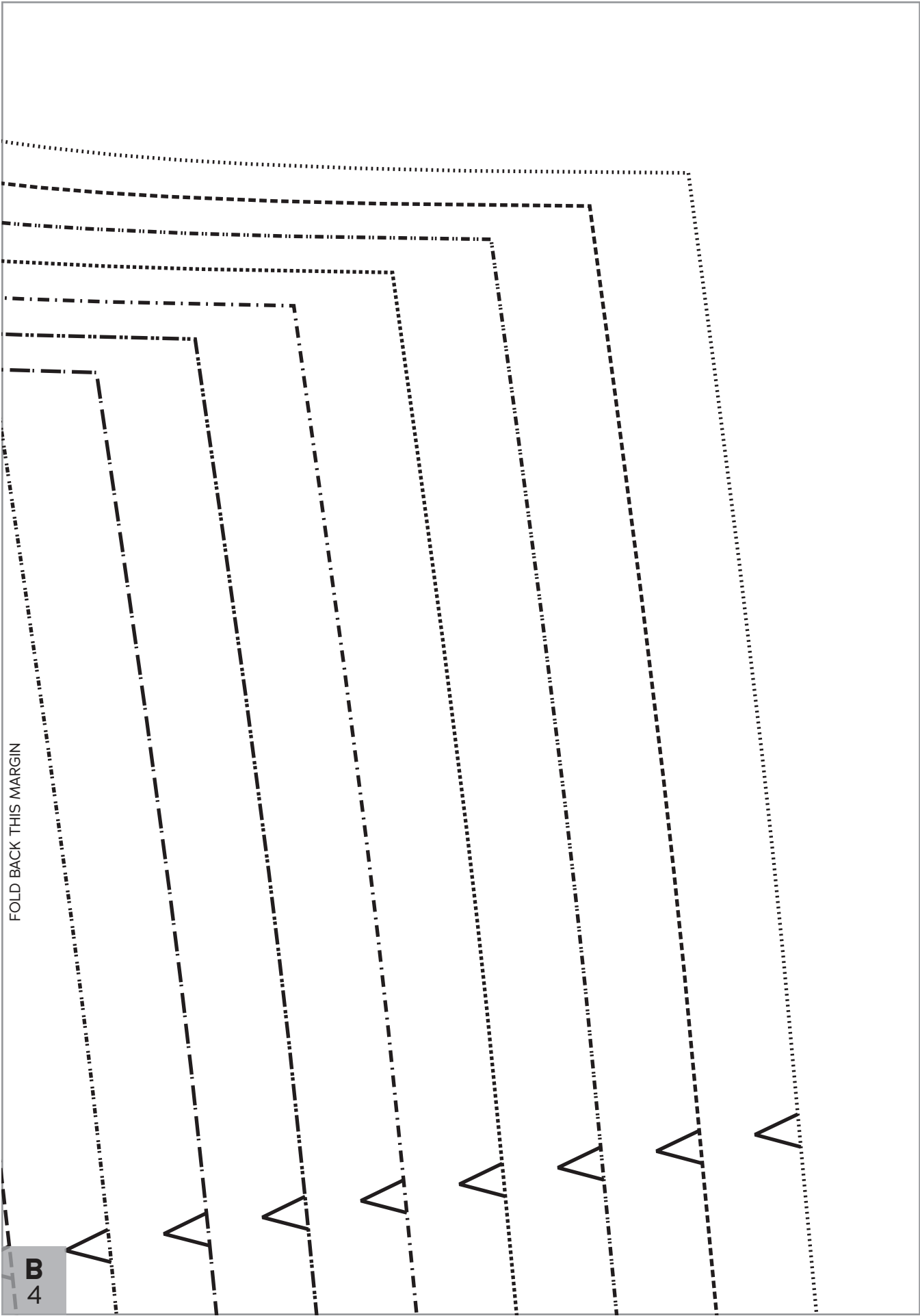
**ZIPPER  
CIRCLE**

**A  
4**



FOLD BACK THIS MARGIN

**B**  
4



FOLD BACK THIS MARGIN

D  
5

12

12

14

14

16

16

18

18

20

20

8

10

12

14

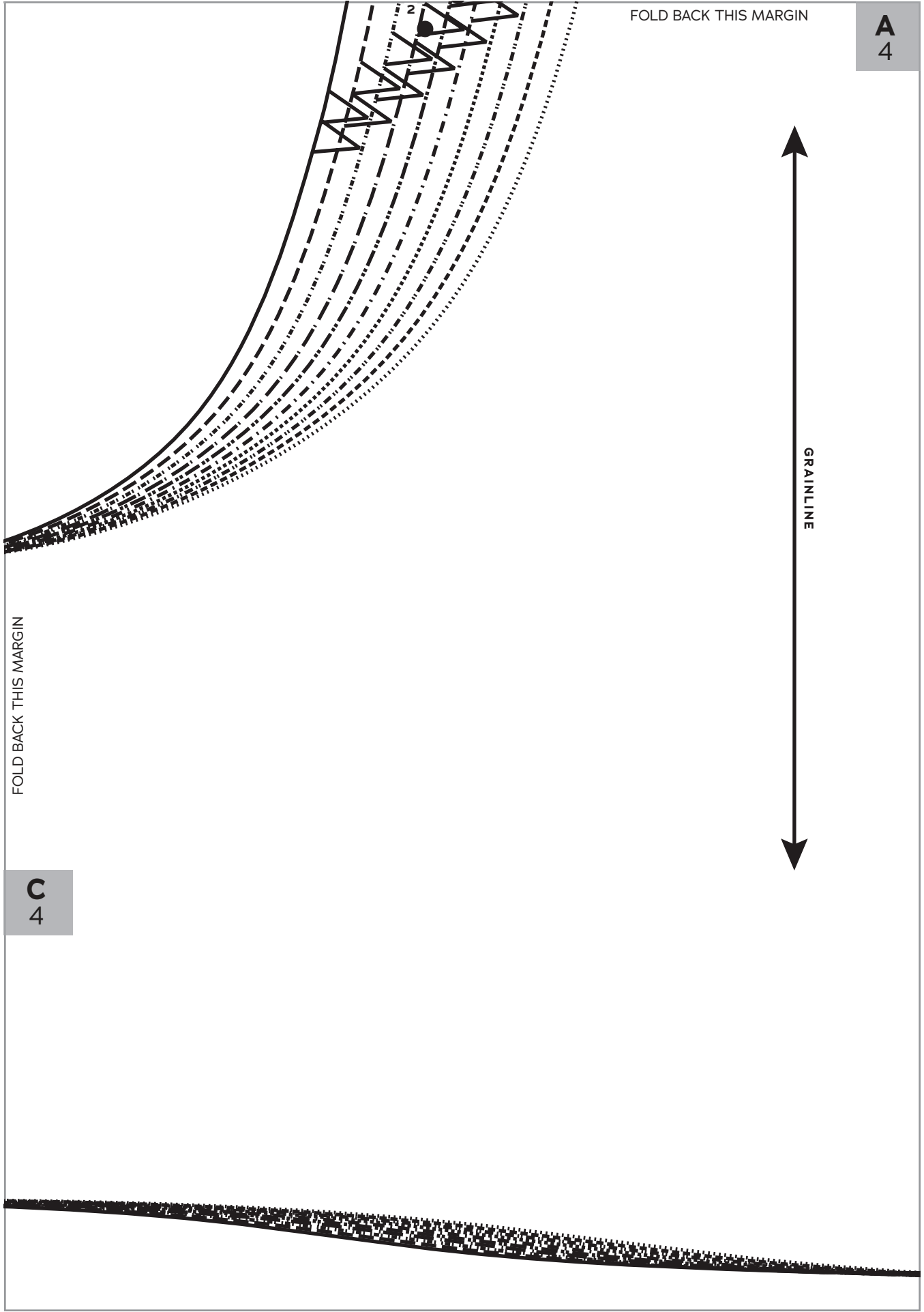
16

18

20



C  
4



FOLD BACK THIS MARGIN

A  
4

GRAINLINE

FOLD BACK THIS MARGIN

C  
4



**A**  
4

FOLD BACK THIS MARGIN

**B**  
4

**4** **CHARM**   
**PATTERNS**  
**LORETTA SHORTS**  
Shorts Back  
Cut 2 fabric

FOLD BACK THIS MARGIN

N

**B**  
4

FOLD BACK THIS MARGIN

FOLD BACK THIS MARGIN

4

6

8

10

12

14

16

18

20