

Society of Charm  
*Starlet*  
 GOWN  
 SIZES 18-34  
**6**  
 Skirt Back  
 Cut fabric on fold

**Society of Charm**  
*Starlet*  
**GOWN**

Sizes 18-34  
 with cup sizes A-H

1/8 inch (1.5 cm) seam allowances  
 are included on all pattern pieces.

PAGE 1 OF 4

**PATTERN PIECE INDEX**  
 4 Skirt Front  
 6 Skirt Back

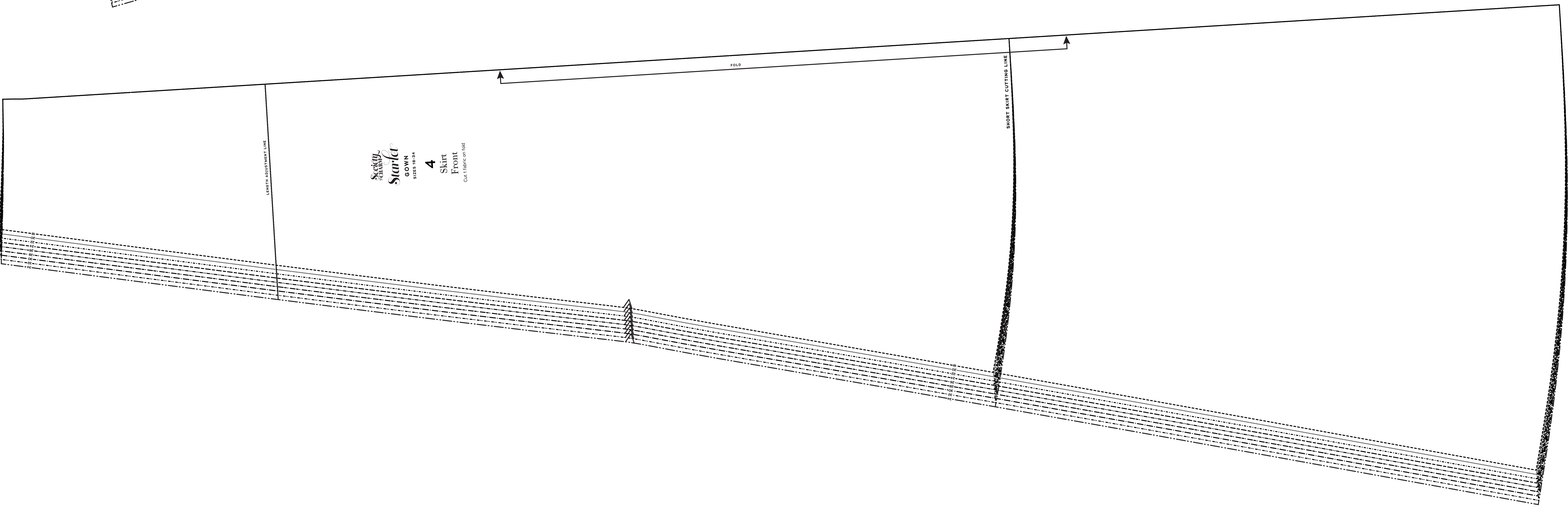
**SIZE 18-34**  
**PATTERN**  
**SIZE KEY**  
 18 - - - - -  
 20 - - - - -  
 22 - - - - -  
 24 - - - - -  
 26 - - - - -  
 28 - - - - -  
 30 - - - - -  
 32 - - - - -  
 34 - - - - -

**SYMBOL KEY**  
 grainline arrow  
 match point/  
 placement mark  
 bust apex

© 2023 Charm Patterns  
 by Genie, Distribution  
 and Commercial Use  
 Prohibited.

1 in  
 test  
 square

2 cm  
 test  
 square



Society of Charm  
*Starlet*  
 GOWN  
 SIZES 18-34  
**4**  
 Skirt Front  
 Cut fabric on fold



# Starlet

## GOWN

Sizes 18-34  
with cup sizes A-H

5/8 inch (1.5 cm) seam allowances  
are included on all pattern pieces.

PAGE 2 OF 4

**PATTERN PIECE INDEX**  
1 Bodice Front, A-C Cup  
1 Bodice Front, D-G Cup  
2 Bodice Back  
3 Bodice Back Inset

**Society of Charm**

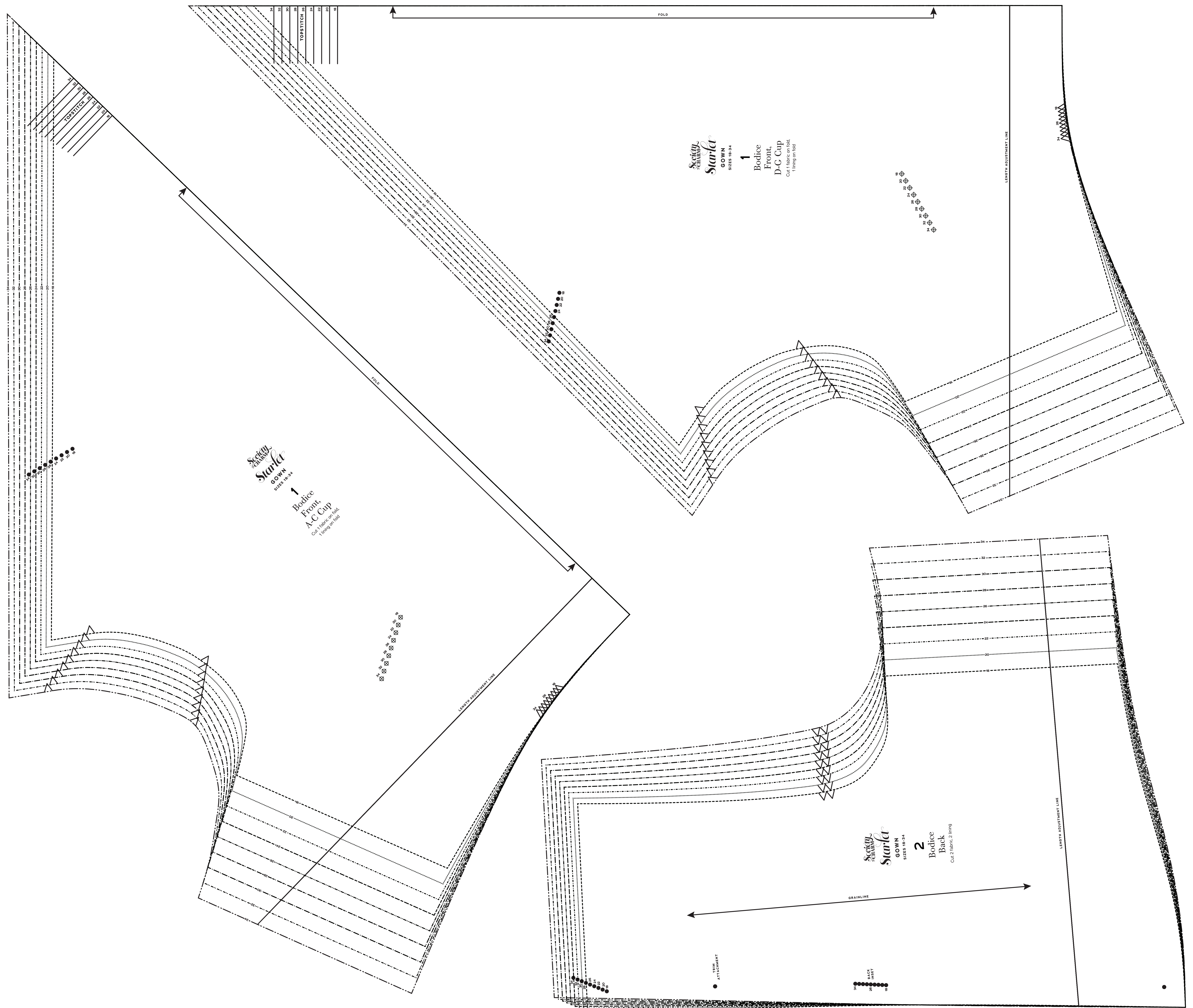
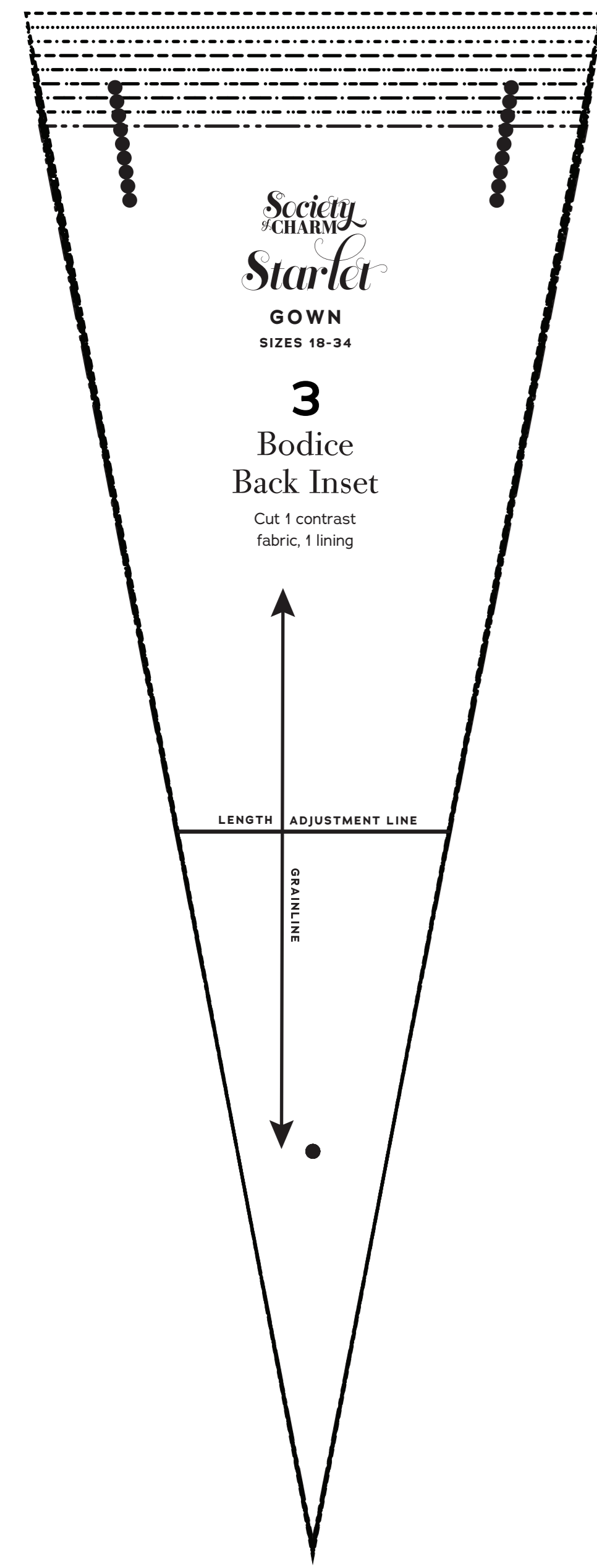
**SIZE 18-34**  
**PATTERN**  
**SIZE KEY**  
18 - - - - -  
20 - - - - -  
22 - - - - -  
24 - - - - -  
26 - - - - -  
28 - - - - -  
30 - - - - -  
32 - - - - -  
34 - - - - -

**SYMBOL KEY**  
grainline arrow  
match point/  
placement mark  
bust apex

© 2023 Charm Patterns  
by Gerie Distribution  
and Commercial Use  
Prohibited

1 in  
test  
square

2 cm  
test  
square





# Starlet

## GOWN

Sizes 18-34  
with cup sizes A-H

5/8 inch (1.5 cm) seam allowances  
are included on all pattern pieces.

PAGE 3 OF 4

PATTERN PIECE INDEX

- 5 Skirt Side Front
- 8 Skirt Side Back

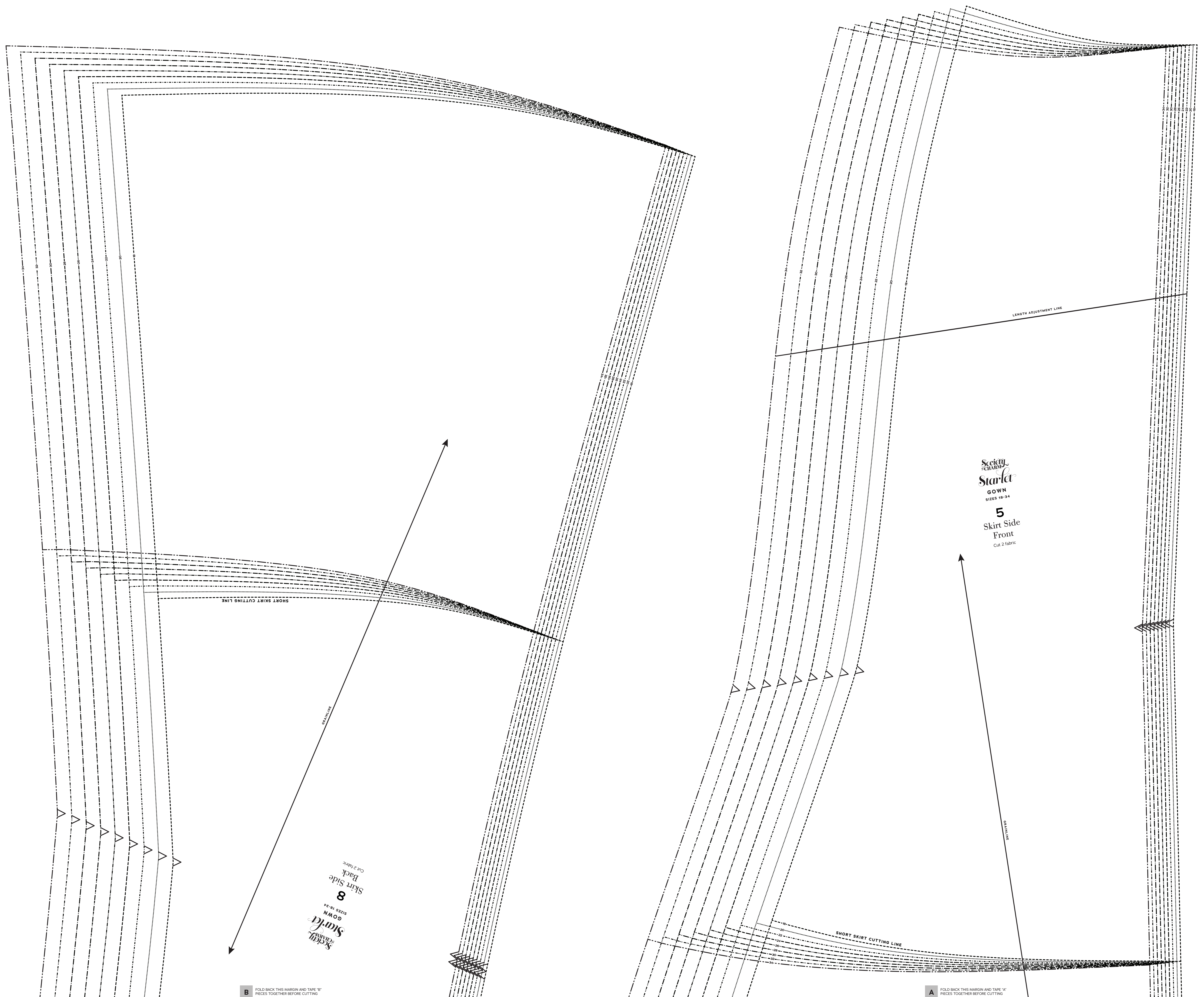


**SIZE 18-34**  
PATTERN  
SIZE KEY  
18 - - - - -  
20 - - - - -  
22 - - - - -  
24 - - - - -  
26 - - - - -  
28 - - - - -  
30 - - - - -  
32 - - - - -  
34 - - - - -

**SYMBOL KEY**  
grainline arrow  
match point/  
placement mark  
bust apex  
© 2023 Charm Patterns  
by Gerie. Distribution  
and Commercial Use  
Prohibited.

1 in  
test  
square

2 cm  
test  
square



Society of Charm  
**Starlet**  
GOWN  
SIZES 18-34  
**5**  
Skirt Side Front  
Cut 2 fabric

Society of Charm  
**Starlet**  
GOWN  
SIZES 18-34  
**8**  
Skirt Side Back  
Cut 2 fabric

**B** FOLD BACK THIS MARGIN AND TAPE "B" PIECES TOGETHER BEFORE CUTTING

**A** FOLD BACK THIS MARGIN AND TAPE "A" PIECES TOGETHER BEFORE CUTTING



# Starlet

## GOWN

Sizes 18-34  
with cup sizes A-H

5/8 inch (1.5 cm) seam allowances  
are included on all pattern pieces.

PAGE 4 OF 4

### PATTERN PIECE INDEX

- 1 Bodice Front, H Cup
- 5 Skirt Side Front (continued)
- 7 Skirt Back Yoke
- 8 Skirt Side Back (continued)



SIZE 18-34

### PATTERN SIZE KEY

- 18 - - - - -
- 20 - - - - -
- 22 - - - - -
- 24 - - - - -
- 26 - - - - -
- 28 - - - - -
- 30 - - - - -
- 32 - - - - -
- 34 - - - - -

### SYMBOL KEY

grainline arrow

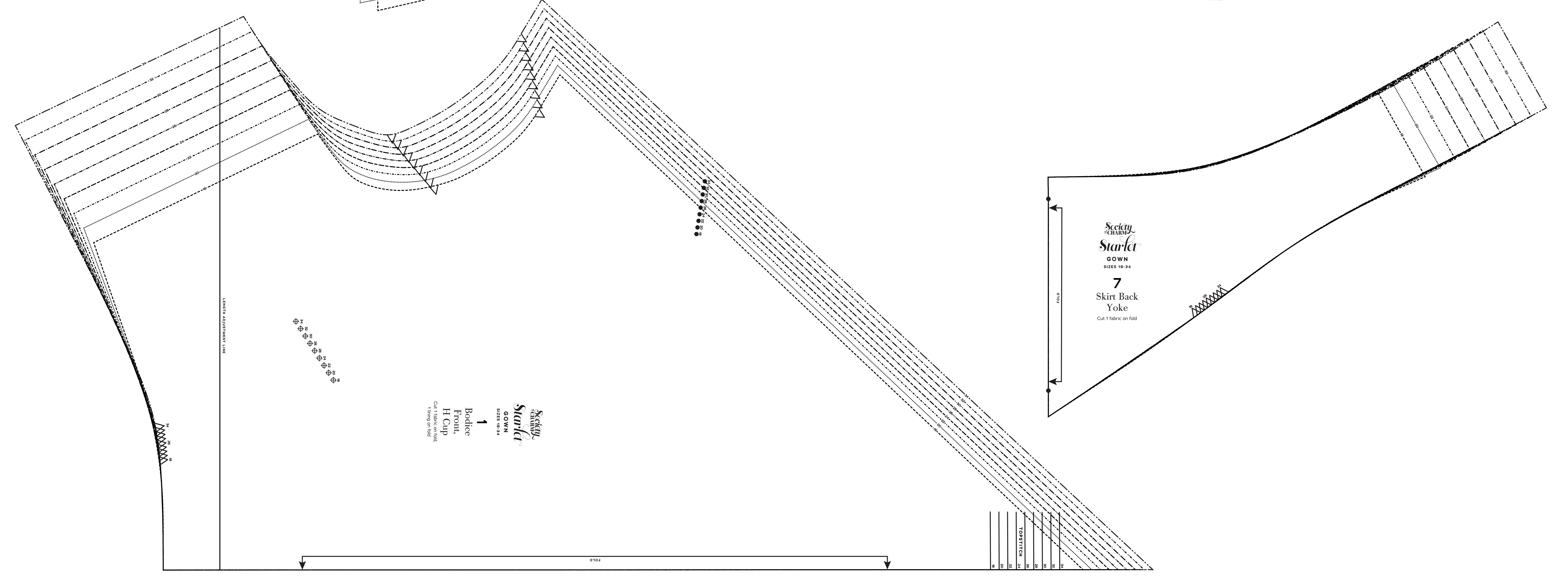
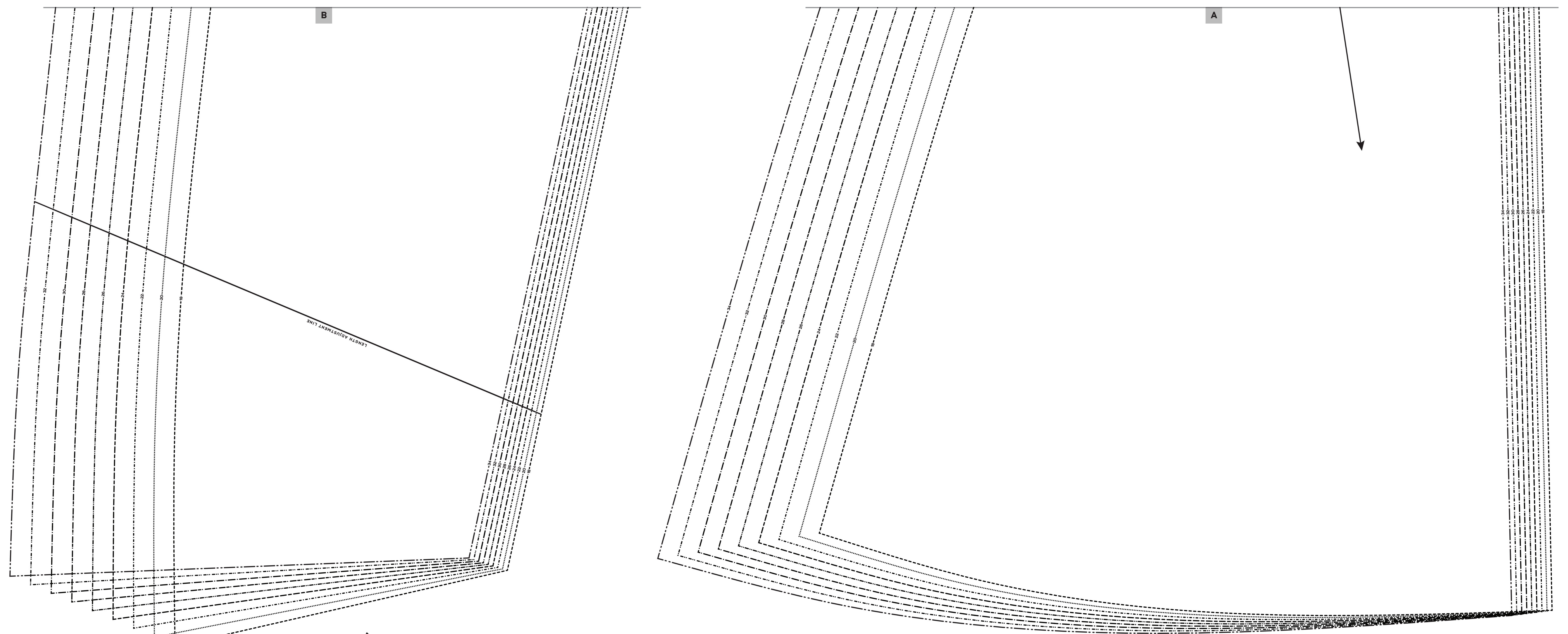
match point/  
placement mark

bust apex

© 2023 Charm Patterns  
by Gerie. Distribution  
and Commercial Use  
Prohibited.

1 in  
test  
square

2 cm  
test  
square



Society of Charm  
**Starlet**  
GOWN  
SIZES 18-34  
**7**  
Skirt Back  
Yoke  
Cut 1 fabric on fold

Society of Charm  
**Starlet**  
GOWN  
SIZES 18-34  
**1**  
Bodice  
Front,  
H Cup  
Cut 1 fabric on fold  
1 lining on fold

18  
20  
22  
24  
26  
28  
30  
32  
34