

THIS MONTH'S MERIT BADGE:
BUTTON TECHNIQUES



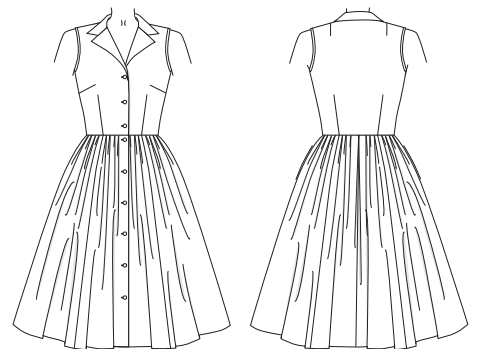
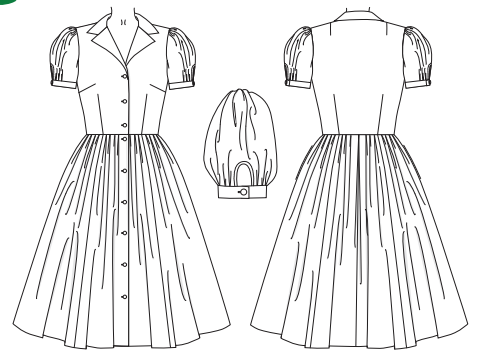
Scout Dress

A PATREON EXCLUSIVE PATTERN

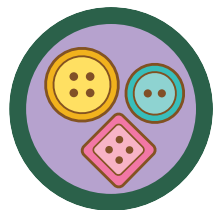


From a garden party to a rustic getaway, our Scout Dress is an essential wardrobe staple for the fashionable camper and sewist. This darling design features storybook sleeves with a charming keyhole detail, a smart collar and lapel, a buttoned front closure for ease of dressing, and a full sweeping skirt with large side-seam pockets for carrying all your necessities! Aptly named for both our beloved Charm Scout community and everyone's favorite protagonist from *To Kill a Mockingbird*, the Scout Dress will have you feeling like the heroine of your own story. This month's special skill is buttons and buttonholes, so tune in to our video to learn all the essential techniques!

xoxo, *Gertie*



This month: If you're in a merit badge tier, your buttons badge is coming soon! Congrats on building up your skills. In this month's video, you'll learn:



- Hand- and machine-sewn buttons
- Buttonholes
- Perfecting knife pleats



NEW FABRIC DESIGNS BY GERTIE!

We've created a number of fabulous fabrics (both all-over prints and border print designs), available for you to order in our [Spoonflower shop](#). Gertie is wearing the Scout Dress in the Camp Gertie Border Print at Midday and Melisha's is sewn in the Vintage Charm Scout Allover Print. Check out the [Charm blog](#) for more info!

SIZE CHART

The Scout Dress is sized in women's US 2-20 and 18-34, A-H cup sizes. Use the chart below to pick your size. To figure out which size you should make, measure your High Bust (under your armpits and above your breasts) and your Full Bust (the fullest part of your bust). Make sure to hold the measuring tape snug and parallel to the ground.

First, find your High bust measurement on the chart to determine your dress size and then scan down the cup sizes in that column to find the cup size that matches your Full Bust measurement.

Take the Waist measurement at the smallest part of your torso and the hip measurement at the widest part of your hips. Note that it is best to choose your size by your bust measurements (and add to or remove from the side seams at the waist if needed).

Not sure which size range to choose? Read more about our [two size ranges here!](#)

SIZES 2-20										
	2	4	6	8	10	12	14	16	18	20
High Bust	29 in 73.7 cm	31 in 78.7 cm	33 in 83.8 cm	35 in 88.9 cm	37 in 94 cm	39 in 99 cm	41 in 104.1 cm	43 in 109.2 cm	45 in 114.3 cm	47 in 119.4 cm
Bust A cup	30.5 in 77.5 cm	32.5 in 82.5 cm	34.5 in 87.6 cm	36.5 in 92.7 cm	38.5 in 97.8 cm	40.5 in 102.9 cm	42.5 in 108 cm	44.5 in 113 cm	46.5 in 118.1 cm	48.5 in 123.2 cm
Bust B/C cup	31 in 78.7 cm	33 in 83.8 cm	35 in 88.9 cm	37 in 94 cm	39 in 99 cm	41 in 104.1 cm	43 in 109.2 cm	45 in 114.3 cm	47 in 119.4 cm	49 in 124.5 cm
Bust D/DD cup	32 in 81.3 cm	34 in 86.4 cm	36 in 91.4 cm	38 in 96.5 cm	40 in 101.6 cm	42 in 106.7 cm	44 in 111.8 cm	46 in 116.8 cm	48 in 121.9 cm	50 in 127 cm
Bust F/G cup	33 in 83.8 cm	35 in 88.9 cm	37 in 94 cm	39 in 99 cm	41 in 104.1 cm	43 in 109.2 cm	45 in 114.3 cm	47 in 119.4 cm	49 in 124.5 cm	51 in 129.5 cm
Bust H cup	34 in 86.4 cm	36 in 91.4 cm	38 in 96.5 cm	40 in 101.6 cm	42 in 106.7 cm	44 in 111.8 cm	46 in 116.8 cm	48 in 121.9 cm	50 in 127 cm	52 in 132.1 cm
Waist	24 in 61 cm	26 in 66 cm	28 in 71.1 cm	30 in 76.2 cm	32 in 81.3 cm	34 in 86.4 cm	36 in 91.4 cm	38 in 96.5 cm	40 in 101.6 cm	42 in 106.7 cm
Hips	36 in 91.4 cm	38 in 96.5 cm	40 in 101.6 cm	42 in 106.7 cm	44 in 111.8 cm	46 in 116.8 cm	48 in 121.9 cm	50 in 127 cm	52 in 132.1 cm	54 in 137.2 cm

SIZES 18-34									
	18	20	22	24	26	28	30	32	34
High Bust	39.5 in 100.3 cm	41.5 in 105.4 cm	43.5 in 110.5 cm	45.5 in 115.6 cm	47.5 in 120.7 cm	49.5 in 125.7 cm	51.5 in 130.8 cm	53.5 in 135.9 cm	55.5 in 141 cm
Bust A/B cup	42.5 in 108 cm	44.5 in 113 cm	46.5 in 118.1 cm	48.5 in 123.2 cm	50.5 in 128.3 cm	52.5 in 133.4 cm	54.5 in 138.4 cm	56.5 in 143.5 cm	58.5 in 148.6 cm
Bust C cup	43 in 109.2 cm	45 in 114.3 cm	47 in 119.4 cm	49 in 124.5 cm	51 in 129.5 cm	53 in 134.6 cm	55 in 139.7 cm	57 in 144.8 cm	59 in 149.9 cm
Bust D/DD cup	44 in 111.8 cm	46 in 116.8 cm	48 in 121.9 cm	50 in 127 cm	52 in 132.1 cm	54 in 137.2 cm	56 in 142.2 cm	58 in 147.3 cm	60 in 152.4 cm
Bust F/G cup	45 in 114.3 cm	47 in 119.4 cm	49 in 124.5 cm	51 in 129.5 cm	53 in 134.6 cm	55 in 139.7 cm	57 in 144.8 cm	59 in 149.9 cm	61 in 154.9 cm
Bust H cup	46 in 116.8 cm	48 in 121.9 cm	50 in 127 cm	52 in 132.1 cm	54 in 137.2 cm	56 in 142.2 cm	58 in 147.3 cm	60 in 152.4 cm	62 in 157.5 cm
Waist	40 in 101.6 cm	42 in 106.7 cm	44 in 111.8 cm	46 in 116.8 cm	48 in 121.9 cm	50 in 127 cm	52 in 132.1 cm	54 in 137.2 cm	56 in 142.2 cm
Hips	48 in 121.9 cm	50 in 127 cm	52 in 132.1 cm	54 in 137.2 cm	56 in 142.2 cm	58 in 147.3 cm	60 in 152.4 cm	62 in 157.5 cm	64 in 162.6 cm

FIT NOTES

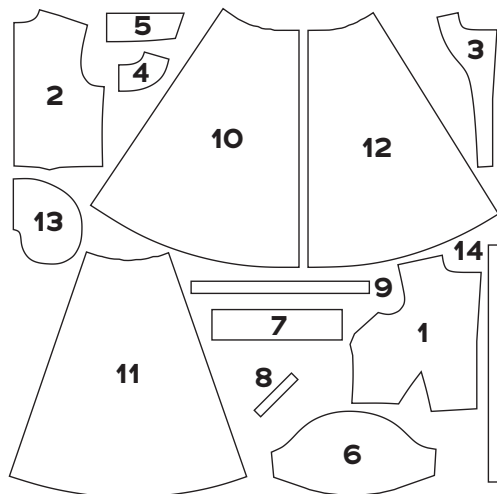
The Scout Dress is designed to have about 3 to 5¼ inches (in) (7.6 to 13.3 cm) of ease in the bust and 1½ to 3 in (3.8 to 7.6 cm) of ease in the waist, with some slight blousing at the waist. The sleeve band has 1 in of ease (see finished measurements in chart below). The skirt is extremely full so you don't need to make hip adjustments.

Sizes

2-20	2	4	6	8	10	12	14	16	18	20
Bust A cup	33.5 in 85.1 cm	35.5 in 90.2 cm	37.5 in 95.3 cm	39.5 in 100.3 cm	41.5 in 105.4 cm	43.5 in 110.5 cm	45.5 in 115.6 cm	47.5 in 120.7 cm	50.5 in 128.3 cm	53.5 in 135.9 cm
Bust B/C cup	34 in 86.4 cm	36 in 91.4 cm	38 in 96.5 cm	40 in 101.6 cm	42 in 106.7 cm	44 in 111.8 cm	46 in 116.8 cm	48 in 121.9 cm	50 in 127 cm	52 in 132.1 cm
Bust D/DD cup	35 in 88.9 cm	37 in 94 cm	39 in 99 cm	41 in 104.1 cm	43 in 109.2 cm	45 in 114.3 cm	47 in 119.4 cm	49 in 124.5 cm	51 in 129.5 cm	53 in 134.6 cm
Bust F/G cup	36 in 91.4 cm	38 in 96.5 cm	40 in 101.6 cm	42 in 106.7 cm	44 in 111.8 cm	46 in 116.8 cm	48 in 121.9 cm	50 in 127 cm	52 in 132.1 cm	54 in 137.2 cm
Bust H cup	37 in 94 cm	39 in 99 cm	41 in 104.1 cm	43 in 109.2 cm	45 in 114.3 cm	47 in 119.4 cm	49 in 124.5 cm	51 in 129.5 cm	53 in 134.6 cm	55 in 139.7 cm
Waist	27 in 68.6 cm	29 in 73.7 cm	31 in 78.7 cm	33 in 83.8 cm	35 in 88.9 cm	37 in 94 cm	39 in 99 cm	41 in 104.1 cm	43 in 109.2 cm	45 in 114.3 cm
Sleeve Band	12 in 30.5 cm	12.5 in 31.75 cm	13 in 33 cm	13.5 in 34.3 cm	14 in 35.6 cm	14.5 in 36.8 cm	15 in 38.1 cm	15.5 in 39.4 cm	16 in 40.6 cm	16.5 in 41.9 cm

Sizes

18-34	18	20	22	24	26	28	30	32	34
Bust A cup	47.75 in 121.3 cm	49.75 in 126.4 cm	51.75 in 131.4 cm	53.75 in 136.5 cm	55.75 in 141.6 cm	57.75 in 146.7 cm	59.75 in 151.8 cm	61.75 in 156.8 cm	63.75 in 161.9 cm
Bust B/C cup	48.25 in 122.6 cm	50.25 in 127.6 cm	52.25 in 132.7 cm	54.25 in 137.8 cm	56.25 in 142.9 cm	58.25 in 148 cm	60.25 in 153 cm	62.25 in 158.1 cm	64.25 in 163.2 cm
Bust D/DD cup	49.25 in 125.1 cm	51.25 in 130.2 cm	53.25 in 135.3 cm	55.25 in 140.3 cm	57.25 in 145.4 cm	59.25 in 150.5 cm	61.25 in 155.6 cm	63.25 in 160.7 cm	65.25 in 165.7 cm
Bust F/G cup	50.25 in 127.6 cm	52.25 in 132.7 cm	54.25 in 137.8 cm	56.25 in 142.9 cm	58.25 in 148 cm	60.25 in 153 cm	62.25 in 158.1 cm	64.25 in 163.2 cm	66.25 in 168.3 cm
Bust H cup	51.25 in 130.2 cm	53.25 in 135.3 cm	55.25 in 140.3 cm	57.25 in 145.4 cm	59.25 in 150.5 cm	61.25 in 155.6 cm	63.25 in 160.7 cm	65.25 in 165.7 cm	67.25 in 170.8 cm
Waist	41.5 in 105.4 cm	43.5 in 110.5 cm	45.5 in 115.6 cm	47.5 in 120.7 cm	49.5 in 125.7 cm	51.5 in 130.8 cm	53.5 in 135.9 cm	55.5 in 141 cm	57.5 in 146.1 cm
Sleeve Band	15.75 in 40 cm	16.25 in 41.3 cm	16.75 in 42.5 cm	17.25 in 43.8 cm	17.75 in 45.1 cm	18.25 in 46.4 cm	18.75 in 47.6 cm	19.25 in 48.9 cm	19.75 in 50.2 cm



PATTERN PIECES

- Bodice Front**
Cut 2 fabric
- Bodice Back**
Cut 1 fabric on fold
- Bodice Front Facing**
Cut 2 fabric, 2 interfacing
- Bodice Back Neck Facing**
Cut 1 fabric on fold, 1 interfacing on fold
- Collar**
Cut 2 fabric on fold, 1 interfacing on fold
- Sleeve**
Cut 2 Fabric
- Sleeve Band**
Cut 2 fabric, 2 interfacing
- Sleeve Keyhole Binding**
Cut 2 fabric

FABRIC NOTES

We recommend light- to medium-weight wovens with some body and crispness. Suitable fabrics include: cotton sateen, poplin, oxford, seersucker, chambray, madras, lawn, voile, eyelet, and shirtings; and linen and linen blends. Alternatively, for a more glamorous finished garment, silk taffeta, dupioni, and shantung may also be used.

MATERIALS & NOTIONS

- 10 5/8-inch buttons (8 buttons for sleeveless version)
- Thread to match your fabrics
- Fusible interfacing (lightweight woven or tricot types for collar and facings)
- Skirt hook-and-bar closure (optional)

RESOURCES

Here are some of the fabrics and supplies I used for the samples and in the video tutorial. There are lots of places to purchase fabric, so this is solely a guide you can use as a reference:

[Pink Twill Shirting](#)

[Camp Gertie Border Print in Cotton Sateen](#)

[Vintage Charm Scout Allover Print in Petal Cotton](#)

[Don't miss our blog post about how to use border print fabrics for your Scout Dress!](#)

- Sleeveless Bias Facing**
Cut 2 fabric
- Skirt Front**
Cut 2 fabric
- Skirt Side Front/Back**
Cut 4 fabric
- Skirt Back**
Cut 1 fabric on fold
- Pocket Bag**
Cut 4 fabric
- Skirt Front Interfacing**
Cut 2 interfacing

REQUIRED YARDAGE & CUTTING LAYOUTS

Note: All pattern pieces are shown in a “without nap” layout. You may need additional yardage for directional prints, stripes, plaids, and other prints that need to be matched across seamlines.

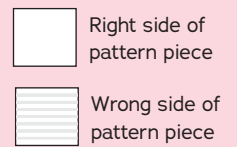
Dress, directional fabric

(1, 2, 3, 4, 5, 10, 11, 12, 13)

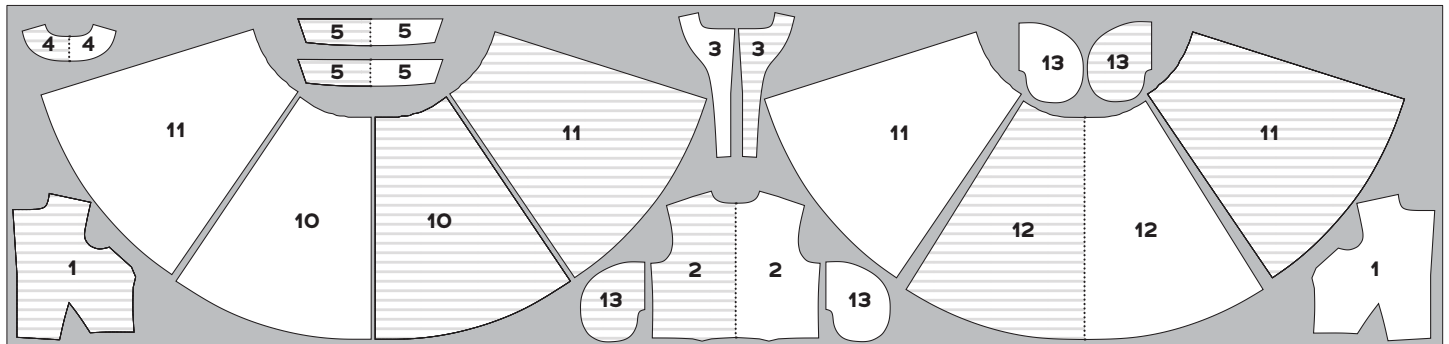
	Sizes 2-10	Sizes 12-20	Sizes 18-24	Sizes 26-34
45 in*	5¼ yds 4.8 m	6⅞ yds 5.6 m	6 yds 5.5 m	7 yds 6.4m
60 in	4¾ yds 4 m	6 yds 5.5 m	5⅝ yds 5.1 m	6½ yds 5.9 m

***NOTE:** In order for this pattern to work with 45-in-wide fabric, the pieces must be rotated 90° and cut out crosswise. The layout **shown below** reflects how to lay out the pieces if you use directional fabric, with the print running lengthwise. The fabric designs available in our [Spoonflower shop](#) are offered in both directions.

KEY TO LAYOUTS



Be sure to note whether the pieces are cut on a double or single layer of fabric. For a double layer, there will be a note indicating FOLD on the layout.

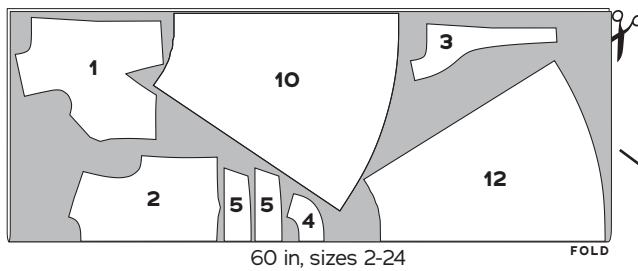


45 in, all sizes

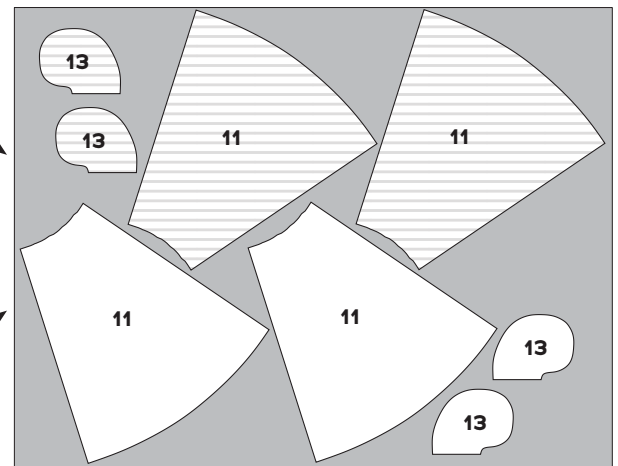
NOTE: single layer of fabric

For 60-in-wide fabric:

fabric: After cutting out the first layout of pattern pieces shown, cut the fabric and open it up to a single layer to cut the remaining pieces.

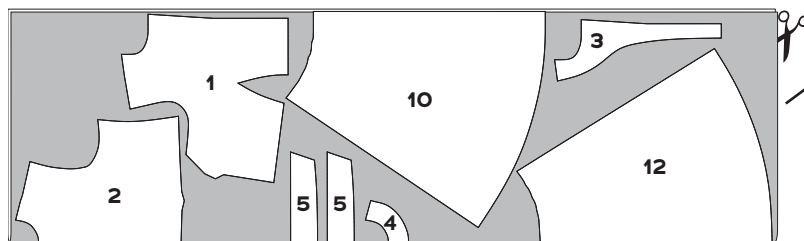


60 in, sizes 2-24



60 in, all sizes

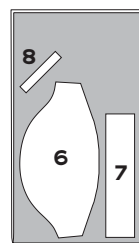
NOTE: single layer of fabric



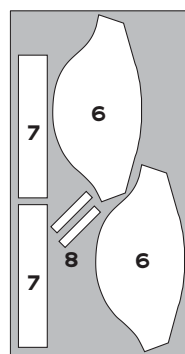
60 in, sizes 26-34

Sleeves, fabric (6, 7, 8)

	Sizes 2-10	Sizes 12-20	Sizes 18-24	Sizes 26-34
45 in	½ yd .5 m	¾ yd .7 m	⅞ yd .8 m	1 yd .9 m
60 in	½ yd .5 m	½ yd .5 m	⅝ yd .6 m	⅝ yd .6 m



45 in, sizes 2-10
60 in, all sizes



45 in, sizes 12-34

NOTE: single layer of fabric

Sleeve Band, interfacing (7)

All sizes

60 in	¼ yd .2 m
-------	--------------

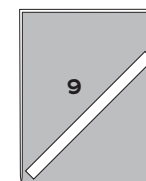


FOLD

Sleeveless Bias Facing, fabric (9)

All sizes

45 in	⅝ yd .6 m
60 in	.6 m

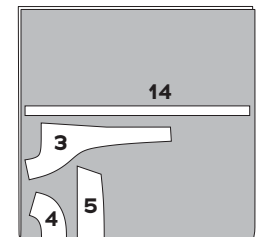


FOLD

Dress, interfacing (3, 4, 5, 14)

All sizes

45 in	1 yd
60 in	.9 m

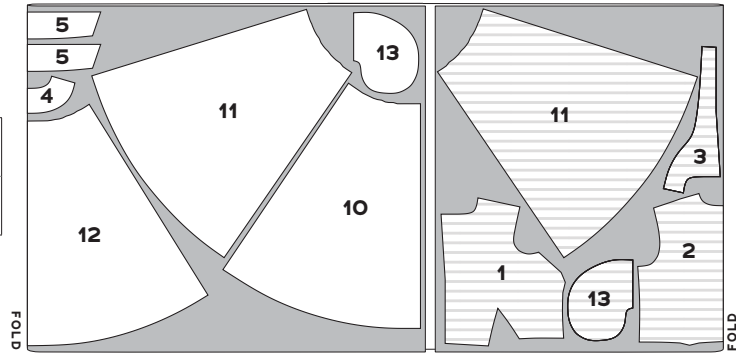


FOLD

REQUIRED YARDAGE & CUTTING LAYOUTS (CONT'D)

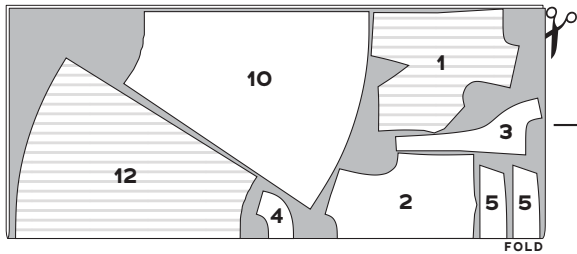
Dress, solids & non-directional prints
(1, 2, 3, 4, 5, 10, 11, 12, 13)

	Sizes 2-10	Sizes 12-20	Sizes 18-24	Sizes 26-34
45 in*	5 ¹ / ₈ yds 4.7 m	6 ³ / ₈ yds 5.8 m	6 ¹ / ₈ yds 5.6 m	6 ⁷ / ₈ yds 6.3 m
60 in	3 ⁷ / ₈ yds 3.5 m	4 ⁷ / ₈ yds 4.5 m	4 ⁵ / ₈ yds 4.2 m	5 ³ / ₄ yds 5.3 m

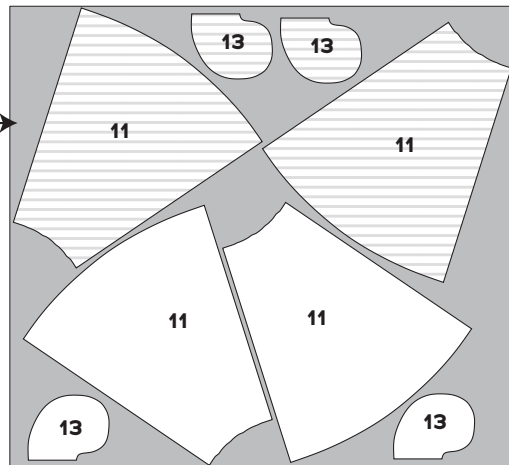


45 in, all sizes

***NOTE:** In order for this pattern to work with 45-in-wide fabric, the pieces must be rotated 90° and cut out crosswise. The full width of the fabric is opened out and a fold on each edge is made perpendicular to the selvages, meeting in the middle.

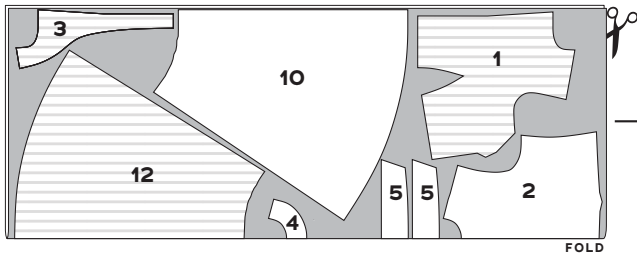


60 in, sizes 2-10

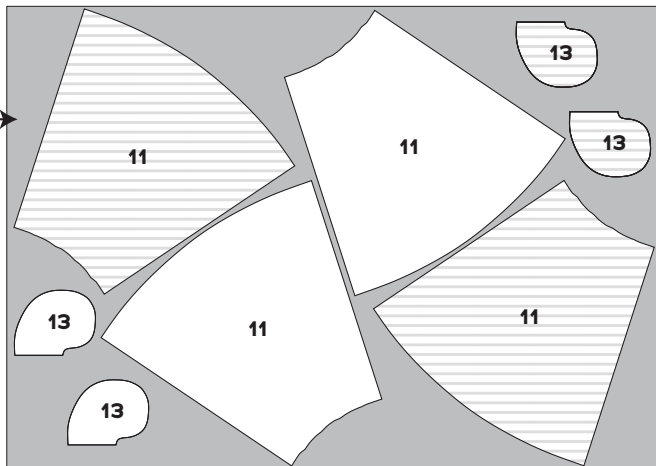


NOTE: single layer of fabric

For 60-in-wide fabric: After cutting out the first layout of pattern pieces shown, cut the fabric and open it up to a single layer to cut the remaining pieces.



60 in, sizes 12-34



NOTE: single layer of fabric

SEWING INSTRUCTIONS

BEFORE SEWING

Transferring marks: use dressmaker's tracing paper and a tracing wheel to transfer all pattern markings to the wrong side (WS) of your fabric. Mark pattern notches by snipping into the seam allowance with the tip of your scissors.

Seam Finishing: if finishing seams with a serger, serge the following seam allowances (without trimming the edges) before construction.

- Long vertical edges of Skirt Fronts, Skirt Side Fronts/ Side Backs, and Skirt Back
- Unnotched edges of Front Facings and Back Neck Facing
- Vertical edges of Sleeves
- Entire Pocket Bag

NOTES

- 5/8-inch (in) (1.5 cm) seam allowances are included on all pattern pieces, except where otherwise noted.
- If you don't have a serger, consider using a zigzag or overlock stitch on your sewing machine. Alternatively, seams may be pinked for an authentic vintage finish.
- A Microtex needle (size 70/10) works well for recommended fabrics.

TIPS

- Check out the Charm Patterns blog this month for a covered belt tutorial!
- If you experience gaping at the waist between buttons, consider adding a hand-sewn hook-and-bar to secure (see final step in instructions).
- Try covered buttons in matching fabric for the dress and sleeves.
- Cut plaids, checks, and stripes on the bias to create unique chevron designs on the bodice and skirt.
- When finishing seams with pinking shears, trim both seam allowances simultaneously after sewing and before pressing open.
- For more structure or opacity, underline or flatline the bodice. Be sure to hand baste underlining at darts.

SEWING THE SCOUT DRESS

Bodice Front and Back

1. Staystitch neckline: on Bodice Front (1), using a 1/2-in (1.3 cm) seam allowance, staystitch front neckline from each shoulder to the center front. Repeat staystitching on Bodice Back (2) neckline.

2. Sew front waist darts: The front waist darts are slightly curved and have a cut-out section. To sew them, match the dart's cut edges and stitch 5/8 in from the raw edge, starting from the base and following the marked stitching lines near the dart point. Press dart legs open and tip of dart flat.

3. Sew bust darts, back waist darts, and back shoulder darts: bring dart legs right sides (RS) together, pinning along marked lines. Stitch along marked lines from dart base to dart point. Backstitch at the beginning but not at the end, leaving a thread tail a few inches long. Tie thread tails by hand. Press bust darts toward waistline. Press waist and shoulder darts toward side seams.

4. Assemble bodice: pin bodice front sections and bodice back at shoulders and side seams RS together, matching notches. Stitch. Serge shoulder seam allowances as one and press toward back. Press side seam allowances open.

Collar and Facings

1. Sew collar: apply fusible interfacing to WS of one Collar (5) piece. Pin interfaced collar to uninterfaced collar, RS together. Stitch along three sides, leaving notched edge open, pivoting at corners. Trim points close to stitching and grade seam allowances so that interfaced seam allowance is slightly wider than uninterfaced seam allowance. Turn collar RS out, making sure corners are sharp by using a point turner, knitting needle, or pin to gently poke or pull them out.

2. Understitch collar: with the uninterfaced collar opened out and seam allowances underneath, stitch from RS 1/8 in (3 mm) from seamline along long edge only, catching seam allowances in stitching. Press collar piece flat, rolling seamline slightly to WS so it is hidden on the uninterfaced collar side. Baste raw collar edges together. **NOTE:** interfaced side of collar is the upper collar.

3. Sew collar to bodice: pin collar to RS of bodice, matching collar notches to shoulder seams. Baste collar to bodice with 1/2-in (1.3 cm) seam allowance. Clip into curves along neckline as needed without clipping stitches.

4. Construct neckline facing: apply interfacing to WS of Bodice Front Facing (3) and Bodice Back Neck Facing (4). Pin each front facing piece to back neck facing piece at shoulders, RS together. Stitch. Press seam allowances open.

5. Sew facing to bodice: pin facing unit to bodice, RS together, matching facing seams to shoulder seams and sandwiching collar between facing and bodice. Stitch, pivoting at corners. Clip into neck curves and trim lapel corners. Grade seam allowances so that outer bodice's are widest and facing's are narrowest. Grade the collar seam allowance to a width between bodice and facing.

6. Understitch facing: with facing opened out from the bodice and seam allowances underneath, stitch on RS 1/8 in (3 mm) from seamline, catching seam allowances in stitching, starting from the bottom of the facing and stopping at the top button mark. Backstitch and break your stitches. Start again by understitching from shoulder seam to shoulder seam along neckline. Backstitch and break your stitches again. Finish by understitching opposite front facing, starting at the top button mark and ending at the bottom of the facing unit. Turn facing to bodice WS and press neckline edge, rolling seamline inside. Secure the facing at the shoulder seams by stitching in the ditch from the bodice RS.

Sleeves

1. Bind keyhole: align Sleeve Keyhole Binding (8) to keyhole cut edge on Sleeve (6), RS together. Stitch using 1/4-in (6 mm) seam allowance, then clip into curves without clipping stitches. Turn bias binding to WS of sleeve. Fold under 1/4 in of binding's edge and pin to WS of sleeve, using initial stitching as a guide. Stitch in the ditch of bias binding from RS through all thicknesses. Alternatively, slipstitch binding invisibly to sleeve WS.



2. Form sleeve pleats: bring pleat lines together along bottom edge of sleeve, working from RS, following arrows and pinning in place. Secure pleats by basting with a 1/2-in seam allowance. Press pleats. Pin underarm seam on sleeve, RS together, and stitch. Press seam allowances open.

3. Gather sleeve cap: using a 4-mm to 5-mm stitch length, sew two lines of stitching on each sleeve cap between circles. Sew the first using 1/2-in (1.3 cm) seam allowance and the second using 1/4-in (6 mm) seam allowance. Pull up bobbin threads.

4. Sew Sleeve Band (7): apply interfacing to WS of sleeve band. Fold sleeve band in half lengthwise, WS together, and press to crease.

5. Sew sleeve band to sleeve: pin one long edge of band to lower edge of sleeve, RS together, matching notches to pleats and underarm seam. Note that sleeve band extends beyond finished keyhole on both ends. Stitch. Press sleeve band down, away from sleeve and over seam allowances. Fold sleeve band RS

together along previously creased line, and pin short ends. Stitch short ends, then pivot to stitch upper edge of sleeve band until you meet the previous line of stitching at the keyhole opening. Trim corners and grade seam allowances so that sleeve's is narrower than band's. Turn sleeve band RS out, gently poking out corners. Turn under sleeve band's free seam allowance, enclosing graded seam allowances of sleeve and band. Pin and slipstitch invisibly in place by hand or stitch in the ditch to secure.

6. Set sleeves into bodice: pin each sleeve to bodice armhole RS together, matching underarm seams and notches. Distribute sleeve fullness evenly between notches. Stitch. Trim armhole seam allowances as one to about $\frac{3}{8}$ in (1 cm), then finish seams as desired. If serging, trim and finish simultaneously. Press sleeve over seam allowances.

Sleeveless Dress Binding

(for sleeveless dress only)

1. Finish armhole: pin short ends of Sleeveless Bias Facing (9) RS together. Stitch. Pin bias facing to bodice armhole, RS together. Stitch. Trim seam allowances to $\frac{1}{4}$ in. Turn bias facing to WS of bodice. Fold under $\frac{1}{4}$ in of facing's free edge and pin to WS of bodice using initial stitching as a guide. Stitch in the ditch of bias from RS through all thicknesses. Alternatively, slipstitch facing invisibly to bodice WS.

Skirt

1. Prepare skirt sections: apply Skirt Front Interfacing (14) to the WS of center fronts of Skirt Front (10) pieces. Staystitch upper curved edge of all skirt sections. To form pleats, bring pleat lines together, following arrows on Skirt Front, Skirt Side Front/Back (11), and Skirt Back (12), pinning in place. Baste to secure pleats in place using a $\frac{1}{2}$ -in seam allowance. Press pleats. **NOTE:** the pleats form a box pleat at center back.

2. Attach pockets to skirt: stitch Pocket Bag (13) to each Skirt Side Front/Back section RS together, matching notches. Stitch using a $\frac{3}{8}$ -in (1 cm) seam allowance. Press pockets toward seam allowances.

3. Assemble skirt side units: pin each skirt side front to skirt side back at side seams, RS together, matching notches. Stitch. Pivot at top and bottom of pockets and stitch around pocket edges. Clip into pivot points on back seam allowances, and press pockets toward skirt side front. Press seam allowances open above and below pockets.

4. Assemble skirt front and back: pin each skirt side unit to skirt back RS together, matching notches. Stitch. Press seam allowances open. Join skirt fronts to skirt side unit RS together, matching notches. Stitch. Press seam allowances open.

5. Attach skirt to bodice: pin skirt to bodice, matching notches and seamlines and with bodice facing opened out to match skirt facing. Stitch. Grade seam allowances so bodice's is the widest. Finish seam allowances as desired. Press waist seam allowances toward bodice. Press bodice and skirt facing to inside of dress.

Finishing

1. Sew buttons and buttonholes: using pattern markings as a placement guide, sew buttonholes by machine on right half of dress front (as worn) as well as on sleeve bands. (Alternatively, you can omit the buttonholes on the sleeve bands and simply sew on the buttons, stitching through both band layers to secure. Some machines have a hard time with buttonholes on small, thick areas like this.) Following pattern markings for buttonholes, sew buttons by hand or by machine to left half of dress front (as worn) and on the sleeve band. Be sure to watch the video for help with this!

2. Hem the dress: allow the dress to hang overnight, if possible, as bias sections of the skirt may drop unevenly. Try the dress on and mark the hem to desired length, retaining a $\frac{5}{8}$ -in hem allowance. Trim any unwanted length, if necessary. Press up the hem allowance and turn in the skirt front facings. Narrow-hem the skirt by machine or invisibly by hand, catching the facings in your stitching.

3. Hook-and-bar closure (optional): sew a hook-and-bar closure to the waist seam at the front opening, sewing hook to WS of right half of dress (as worn), and bar to the RS of left half of dress (as worn).

Enjoy your lovely new Scout Dress!



PATTERN PIECE LOCATION GUIDE

Here is a list to help you locate the pattern pieces on the letter-size tiled pages and A0 pattern sheets.
The tiled pieces and A0 sheets are included as separate pdf files as part of this digital pattern.

SIZES 2-20

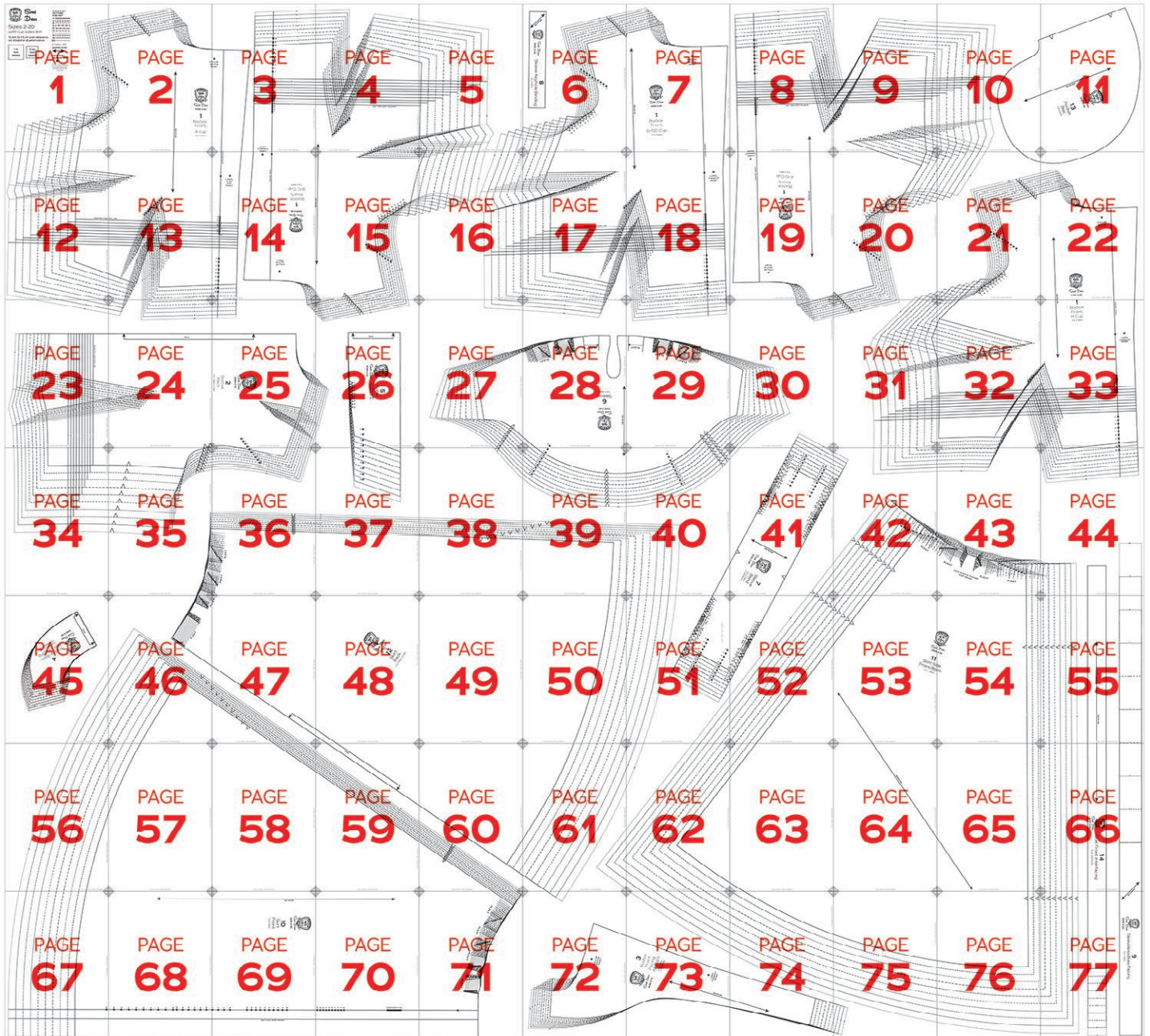
PC#	Piece Name	Tiled	A0
1	Bodice Front, A Cup	1-3, 12-14, 23-25	1
1	Bodice Front, B/C Cup	3-5, 14-16, 25-26	1
1	Bodice Front, D/DD Cup	5-7, 16-18, 27-29	1
1	Bodice Front F/G Cup	8-10, 19-21, 30-31	2
1	Bodice Front, H Cup	20-22, 31-33, 42-44	4
2	Bodice Back	23-26, 34-36	3
3	Bodice Front Facing	72-75	4
4	Bodice Back Neck Facing	45	3
5	Collar	26, 37	3
6	Sleeve	27-30, 38-41	1
7	Sleeve Band	30, 40-42, 51-52	1
8	Sleeve Keyhole Binding	6	3
9	Sleeveless Bias Facing	44, 55, 66, 77	2
10	Skirt Front	45-48, 56-60, 67-71	4
11	Skirt Side Front/Back	41-44, 51-55, 61-66, 73-77	3
12	Skirt Back	35-40, 46-51, 59-62, 72	2
13	Pocket Bag	10-11, 21-22	4
14	Skirt Front Interfacing	44, 55, 66, 77	2

SIZES 18-34

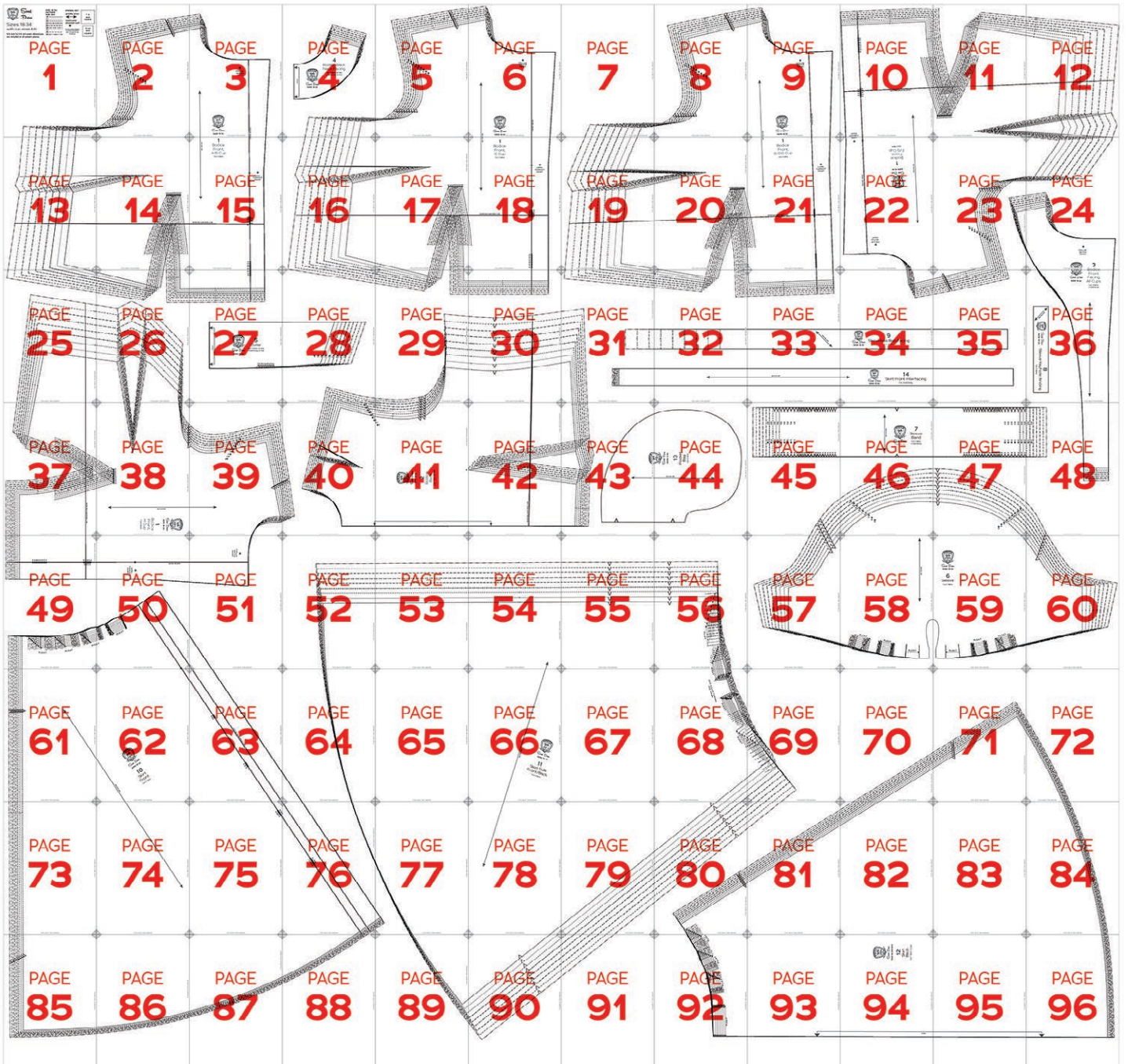
PC#	Piece Name	Tiled	A0
1	Bodice Front, A/B Cup	1-3, 13-15, 25-27	5
1	Bodice Front, C Cup	4-6, 16-18, 28-30	4
1	Bodice Front, D/DD Cup	7-9, 19-21, 31-33	5
1	Bodice Front F/G Cup	10-12, 22-24, 34-35	6
1	Bodice Front, H Cup	25-26, 37-40, 49-51	6
2	Bodice Back	28-31, 40-43	3
3	Bodice Front Facing	23-24, 36, 48	5
4	Bodice Back Neck Facing	4	2
5	Collar	27-28	2
6	Sleeve	45-48, 57-60	2
7	Sleeve Band	45-48	2
8	Sleeve Keyhole Binding	36	3
9	Sleeveless Bias Facing	31-35	4
10	Skirt Front	49-51, 61-64, 73-77, 85-88	3, 4
11	Skirt Side Front/Back	52-56, 64-69, 76-81, 89-91	1, 2
12	Skirt Back	70-72, 80-84, 92-96	3, 4
13	Pocket Bag	43-44	2
14	Skirt Front Interfacing	31-35	3

TILING MAPS

Sizes 2-20



Sizes 18-34



HOW TO USE THIS PATTERN

The pattern pieces are tiled so you can print them on Letter (8 1/2" x 11") or A4 size paper. You can also send the A0 pattern sheet PDF to a local or online printer (like ThePlottedPattern.com) to print on large sheets (36" x 48" for U.S. or A0 for international).

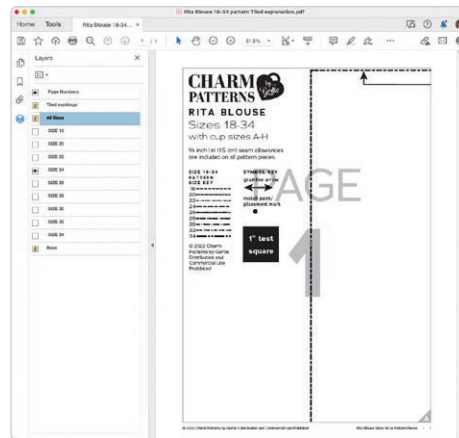
This pattern includes size layers. To get the best results, open either the Tiled or A0 pattern pieces PDF in [Acrobat Reader](#).

Open the Layers Palette (View>Show/Hide>Navigation Panes>Layers) and hide all of the layer(s) except for the ones you want to print by clicking on the eye icon.

The All Sizes and Tiled Markings

layers have general pattern information and will always print.

You may choose to turn off the Page Numbers layer. The page numbers will still appear at the bottom of each page in the footer.



WORKING WITH THE TILED PIECES

Go to File>Print and change the page range to the pages you need for the pieces you've chosen (see Pattern Pieces Printing Index). Make sure the Page Sizing settings to 100% or Actual Size. Test this after printing by measuring the 1" test box on the first page of the pattern pieces.

Cut apart any pattern pieces that share a page, then fold back or cut off the page margins on each page as marked.

Match the letters in the gray corner diamonds. Tape the pages together, butting up the folded or cut page edges with the gray margin lines.

MORE FROM GERTIE

[At CharmPatterns.com](http://CharmPatterns.com): Shop my sewing patterns and accessories.

[On YouTube](#): Learn beginner and advanced sewing skills and techniques through my tutorials and watch episodes of my *Gertie's World* series.

[On Instagram](#): Stay in the loop and get inspired.

[On Patreon](#): Access monthly patterns and tutorial videos.

