



# Lucille Trousers

Sizes 2-20  
with cup sizes A-H

5/8 inch (in) (1.5 cm) seam allowances  
are included on all pattern pieces.

Page 1 of 3

**PAGE 1 PATTERN PIECES**  
1 Trousers Front

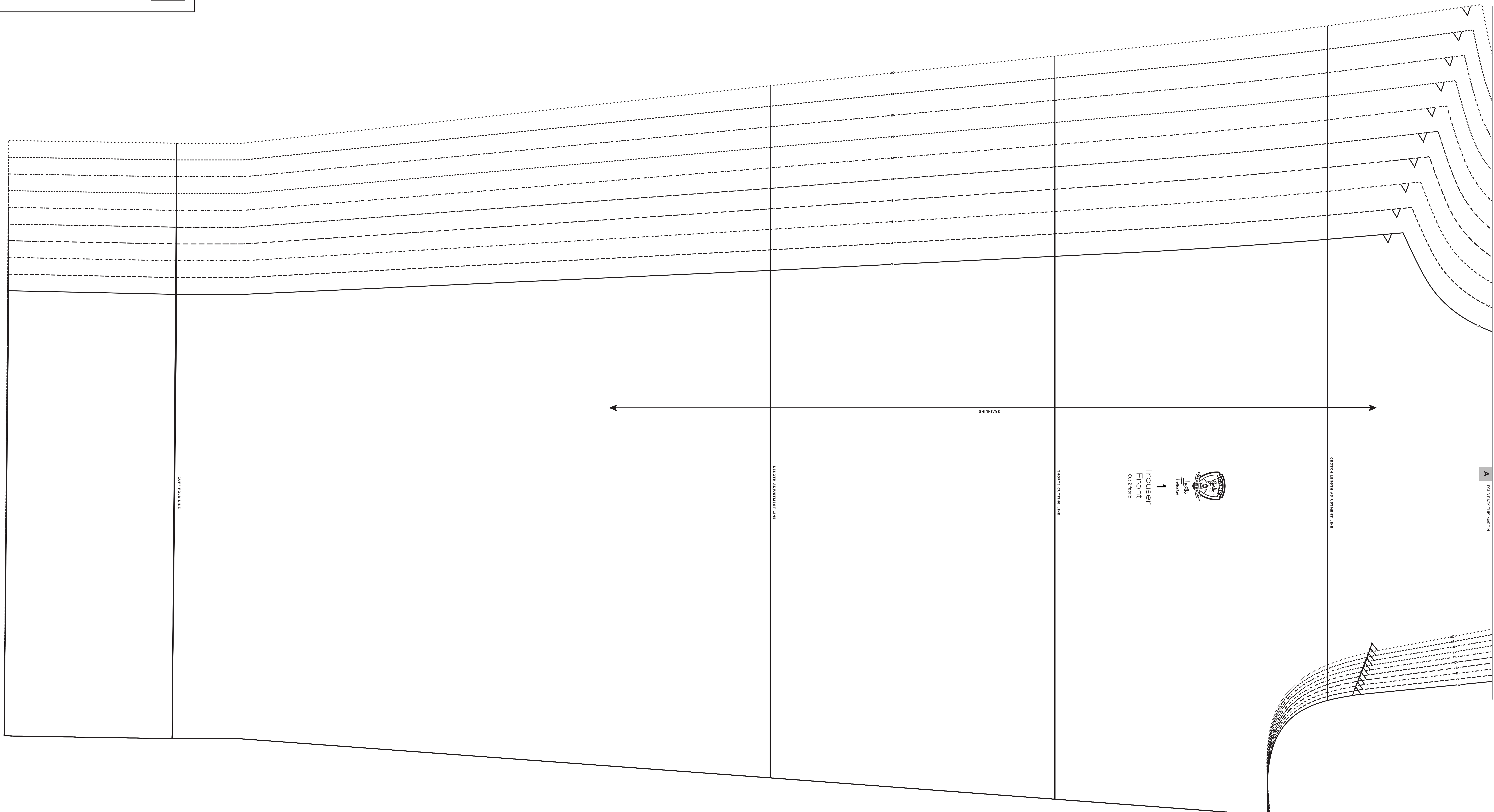
**PATTERN  
SIZE KEY**

2	-----
4	-----
6	-----
8	-----
10	-----
12	-----
14	-----
16	-----
18	-----
20	-----

**SYMBOL KEY**

grainline arrow  
match point/  
placement mark

1" test  
square



FOLD HERE TO MAKE



# Lucille Trousers

Sizes 2-20  
with cup sizes A-H

5/8 inch (1.5 cm) seam allowances  
are included on all pattern pieces.

Page 2 of 3

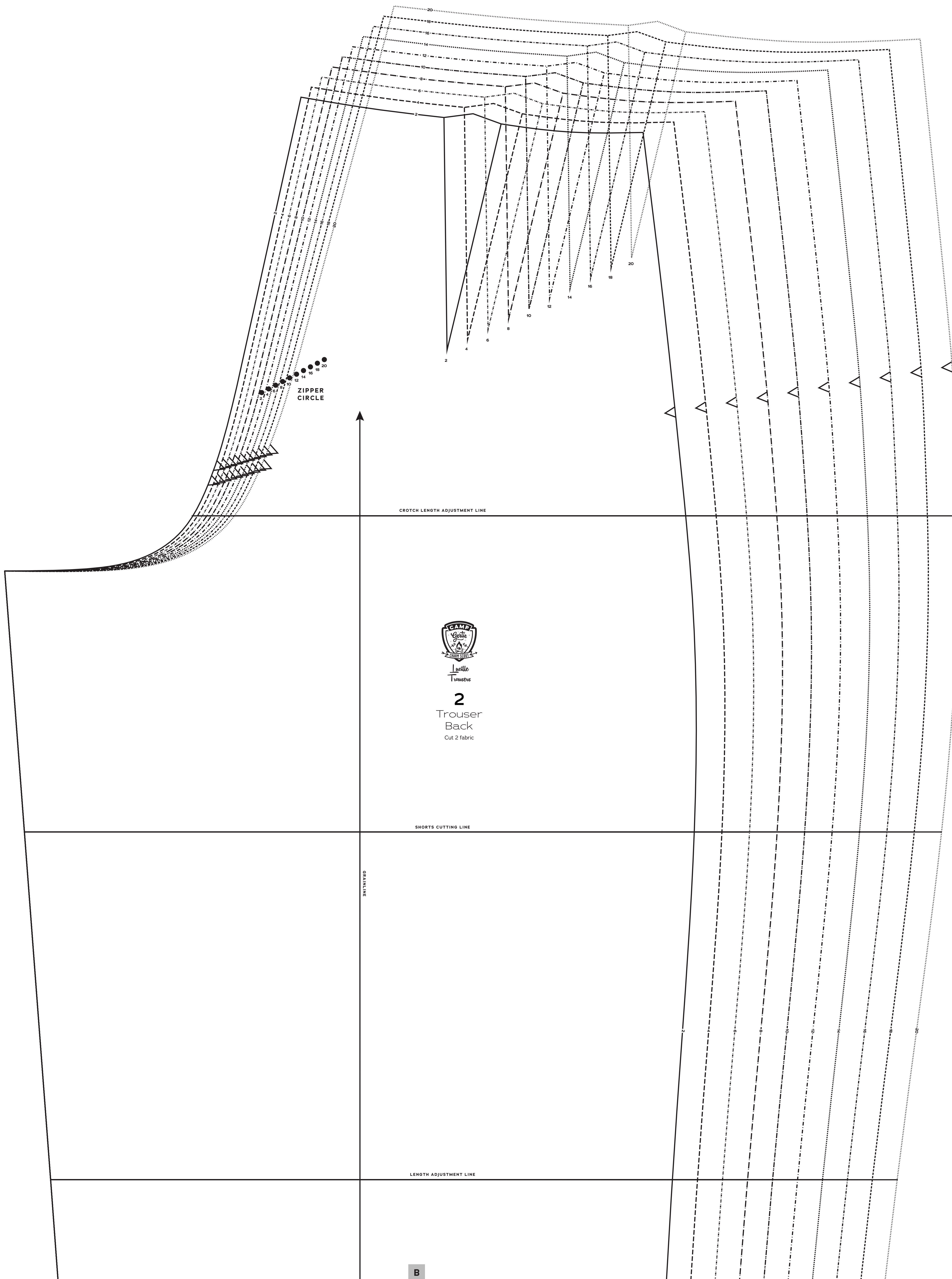
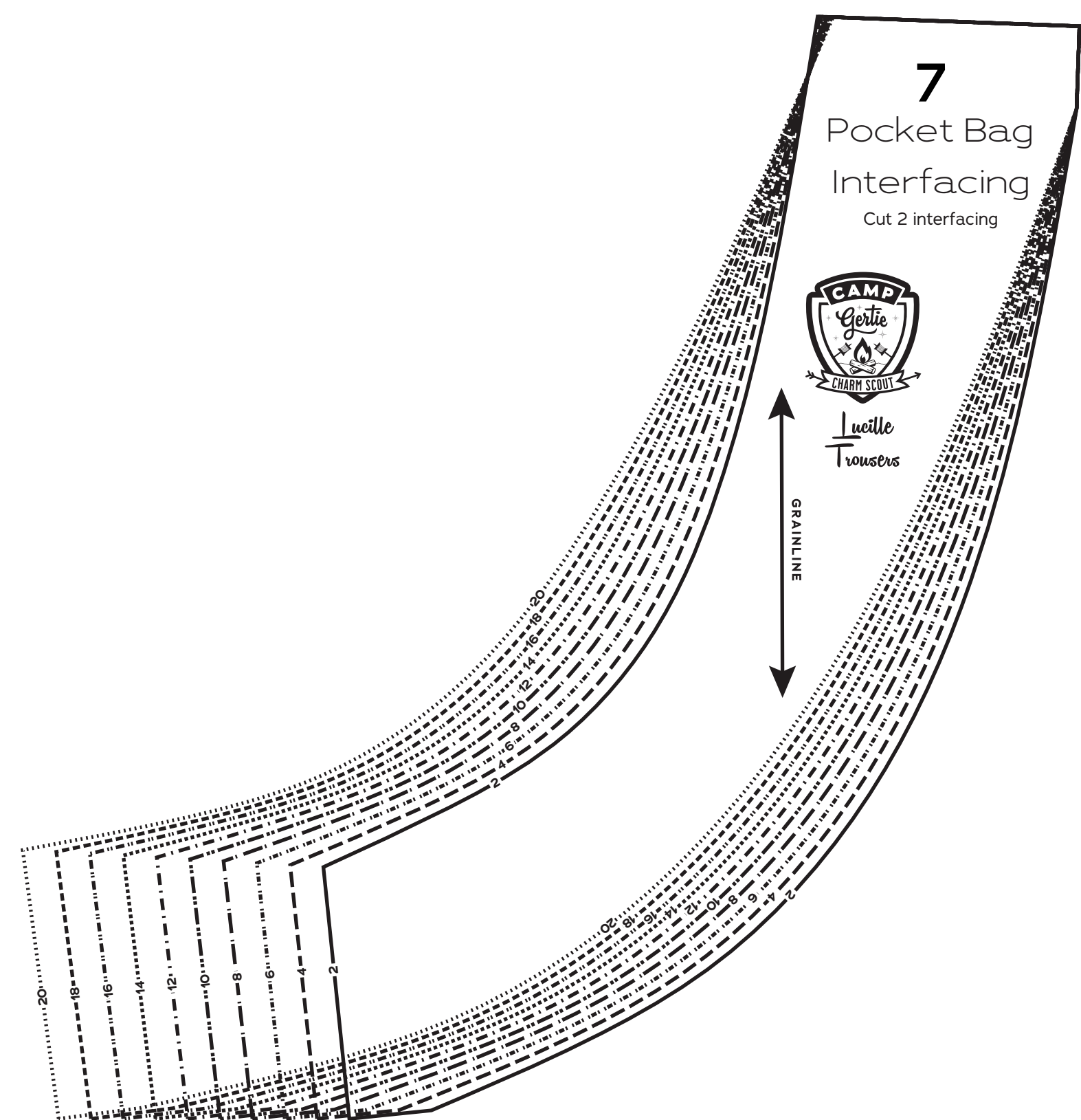
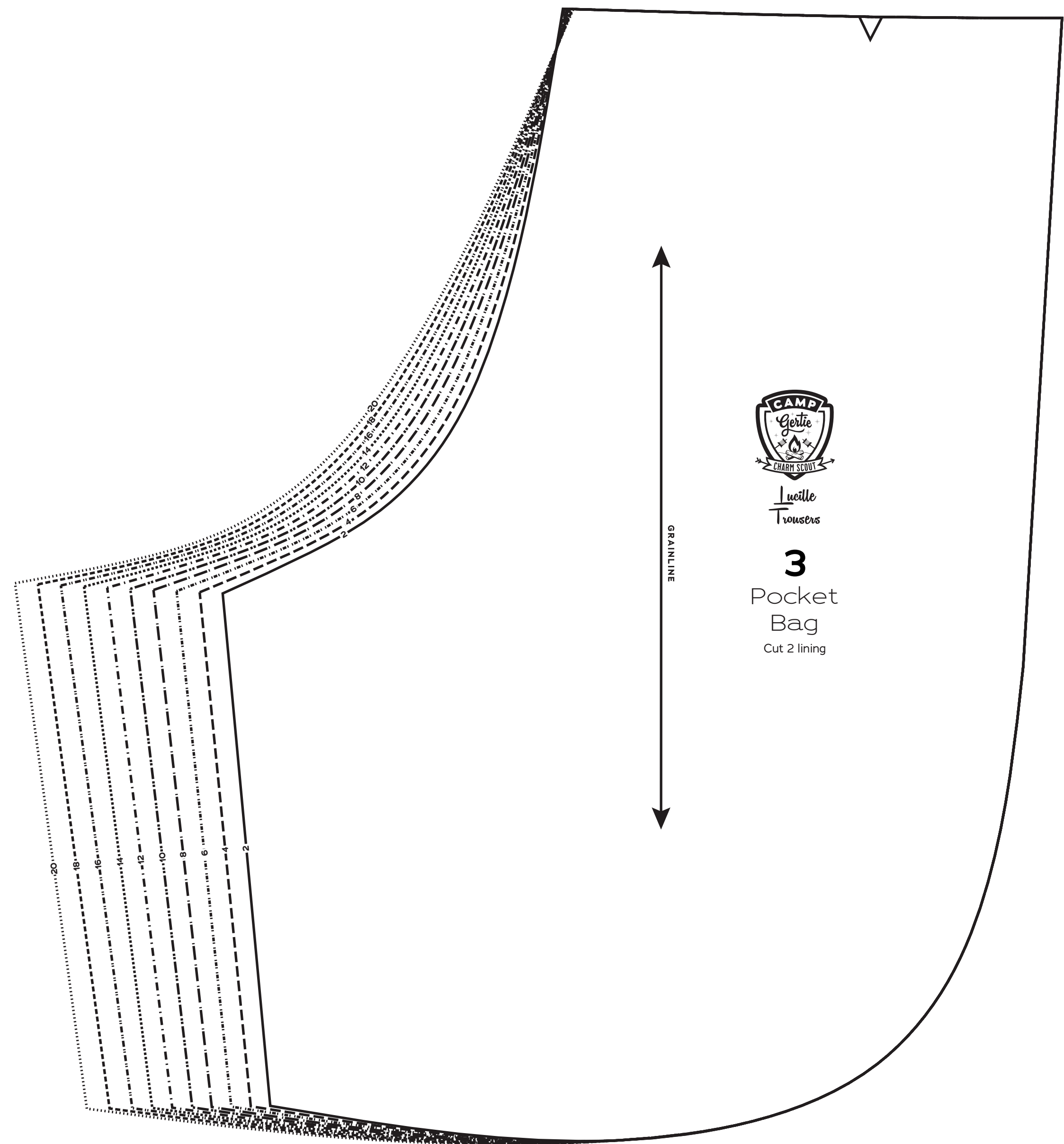
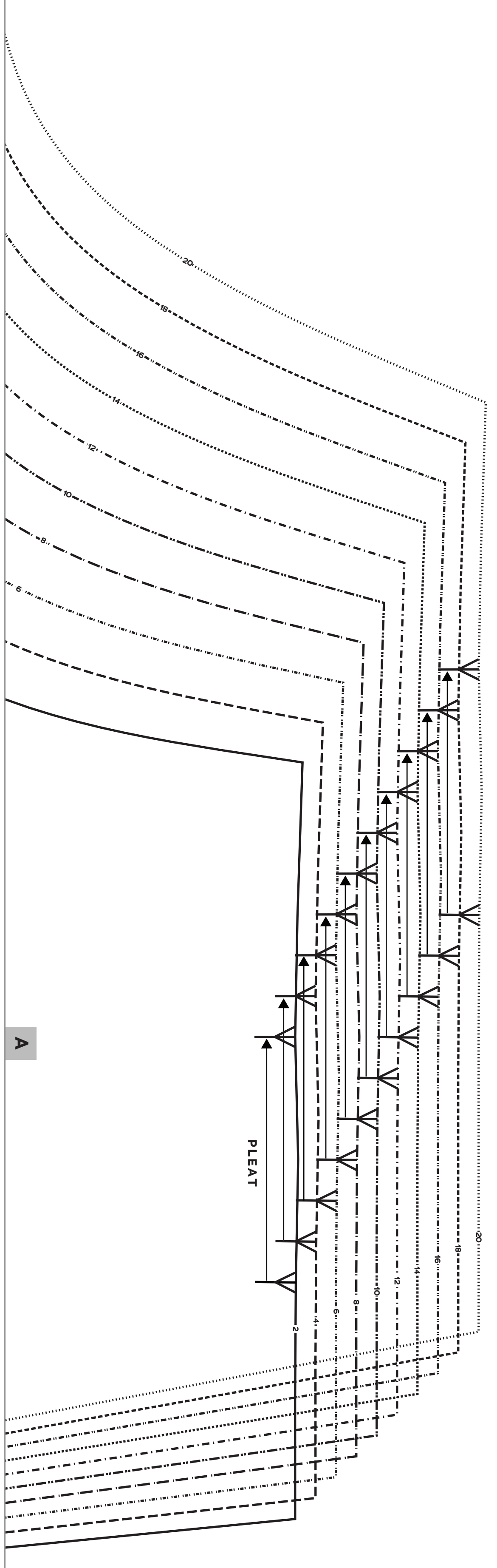
### PAGE 2 PATTERN PIECES

- 1 Trouser Front
- 2 Trouser Back
- 3 Pocket Bag
- 7 Pocket Bag Interfacing

PATTERN SIZE KEY	
2	---
4	- - - -
6	- - - - -
8	- - - - - -
10	- - - - - - -
12	- - - - - - - -
14	- - - - - - - - -
16	- - - - - - - - - -
18	- - - - - - - - - - -
20	- - - - - - - - - - - -

SYMBOL KEY  
 grainline arrow  
 match point/  
 placement mark

1" test  
 square



A

B



# Lucille Trousers

Sizes 2-20  
with cup sizes A-H

5/8 inch (1.5 cm) seam allowances  
are included on all pattern pieces.

Page 3 of 3

### PAGE 3 PATTERN PIECES

- 2 Trouser Back
- 4 Trouser Side Front
- 5 Curved Waistband
- 6 Straight Waistband

### PATTERN SIZE KEY

- 2 ————
- 4 - - - - -
- 6 - - - - -
- 8 - - - - -
- 10 - - - - -
- 12 - - - - -
- 14 - - - - -
- 16 - - - - -
- 18 - - - - -
- 20 - - - - -

### SYMBOL KEY

- ↔ grainline arrow
- match point/  
placement mark
- 1" test  
square

