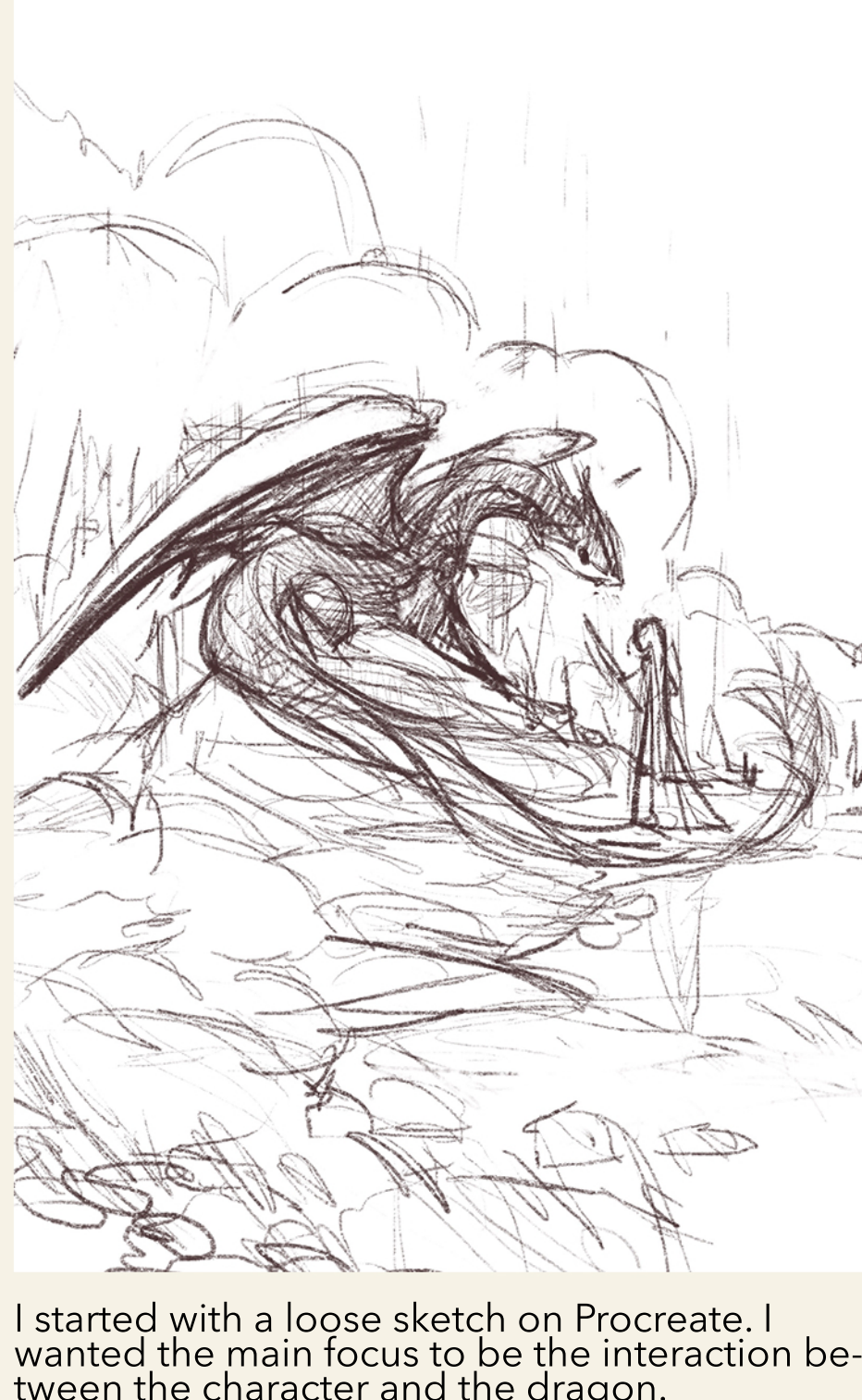
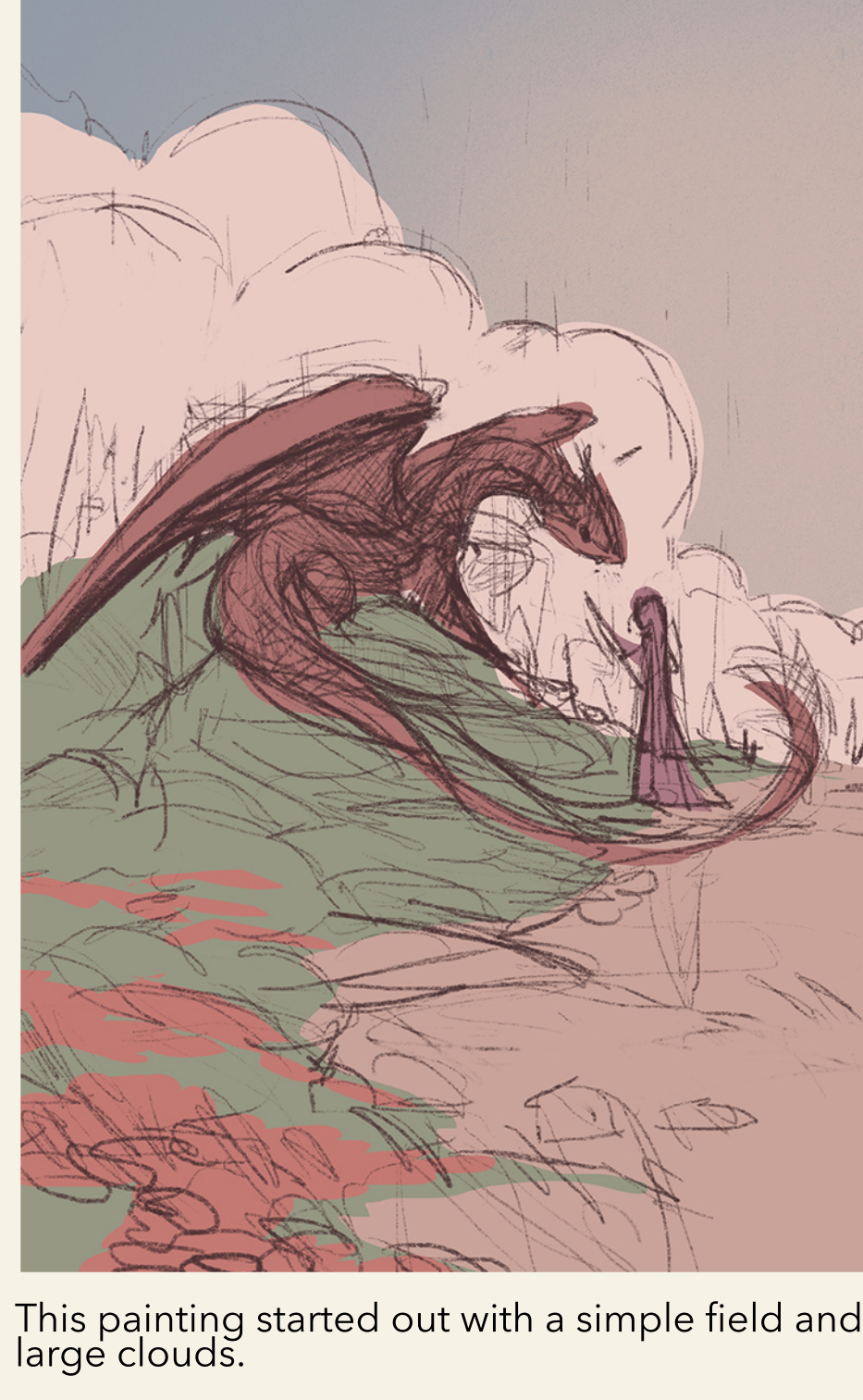


## AN OLD FRIEND PROCREATE PROCESS



I started with a loose sketch on Procreate. I wanted the main focus to be the interaction between the character and the dragon.



This painting started out with a simple field and large clouds.



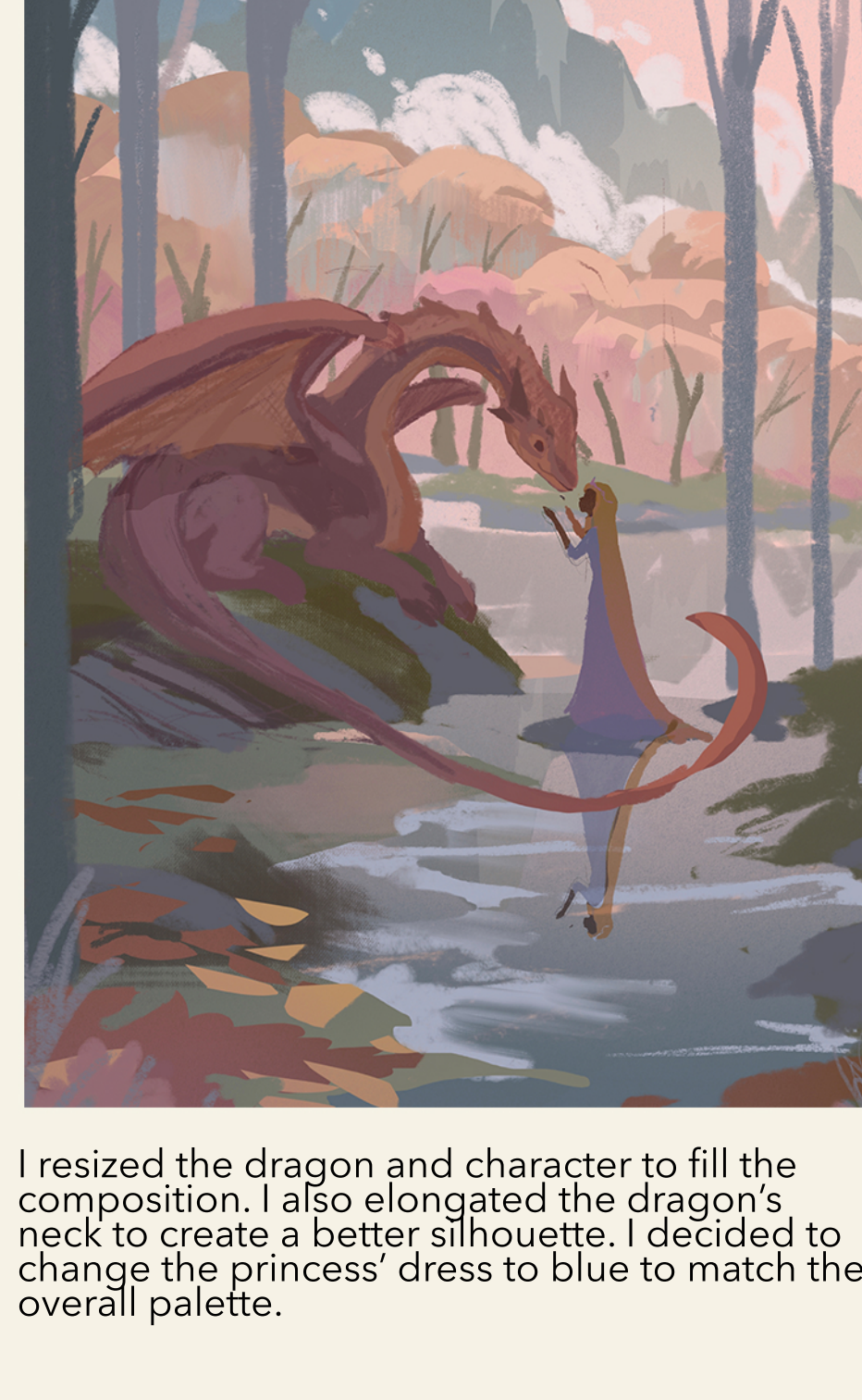
Afterwards, I wanted to explore a different setting by adding mountains in the distance and adding tall trees to create a foreground.



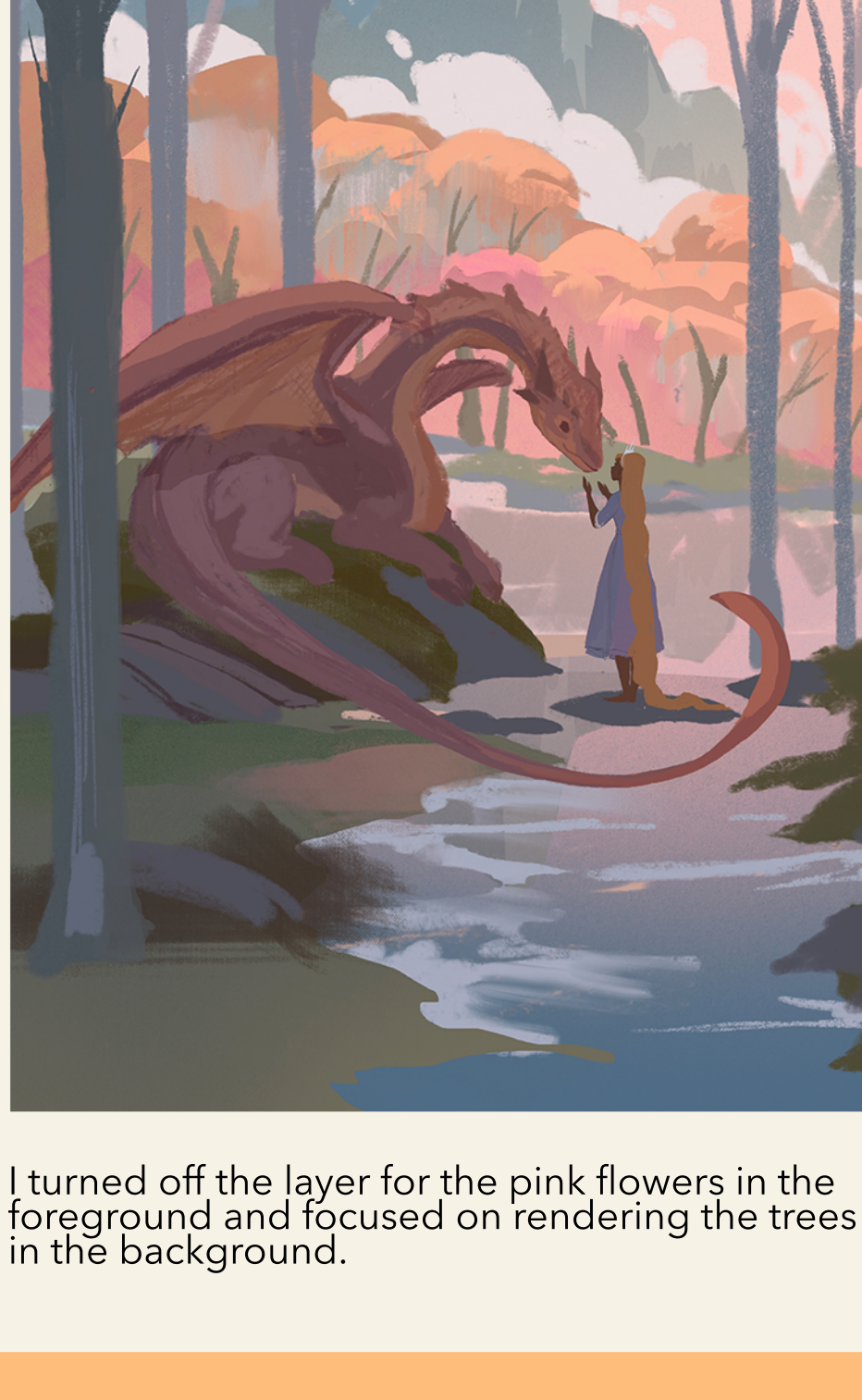
I add some light to the mountains and trees to see how the background composition would look like with the characters.



I decided the palette needed some cohesion so I changed the tree trunk colours to match the mountains and the water.



I resized the dragon and character to fill the composition. I also elongated the dragon's neck to create a better silhouette. I decided to change the princess' dress to blue to match the overall palette.

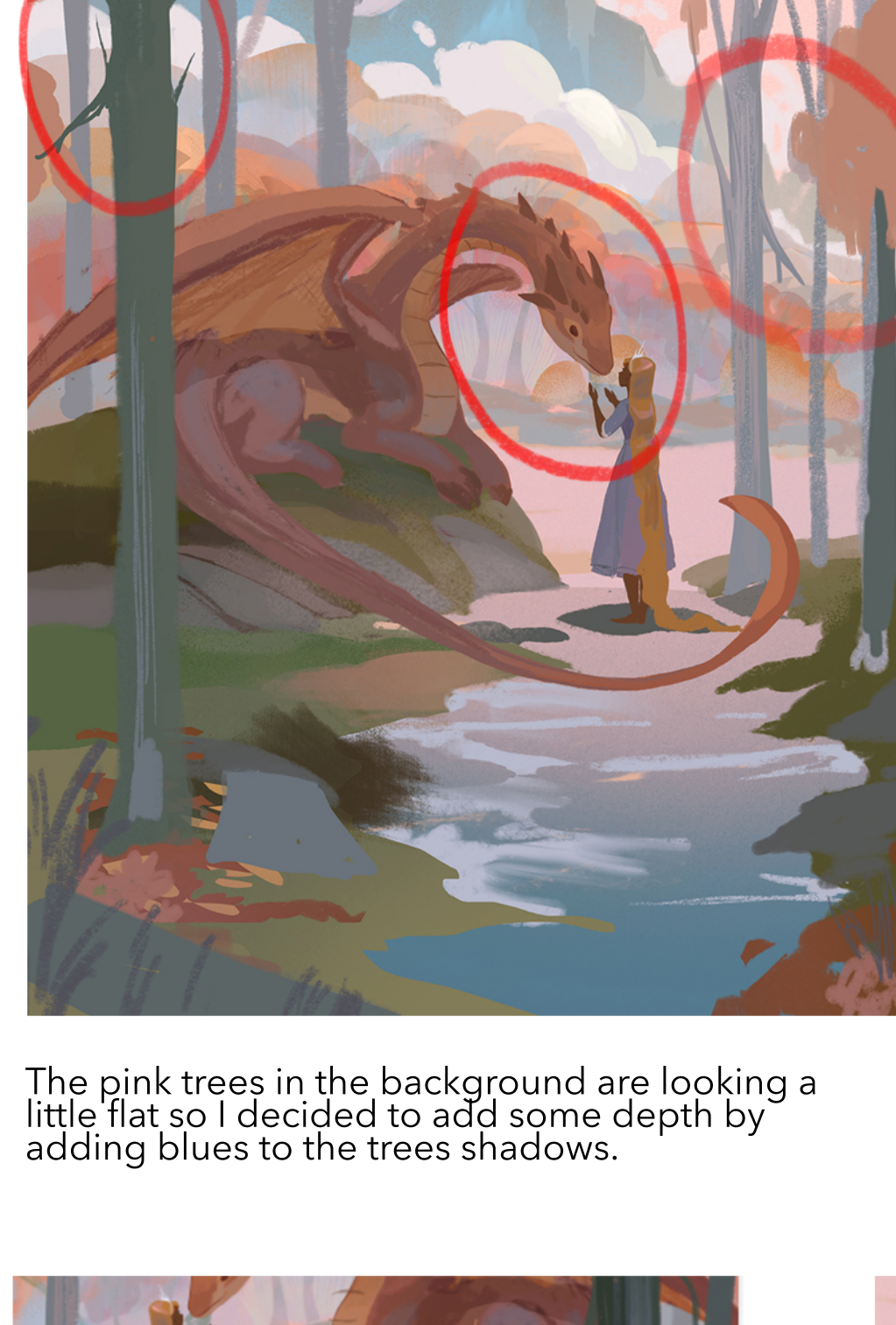


I turned off the layer for the pink flowers in the foreground and focused on rendering the trees in the background.

## AN OLD FRIEND PHOTOSHOP PROCESS

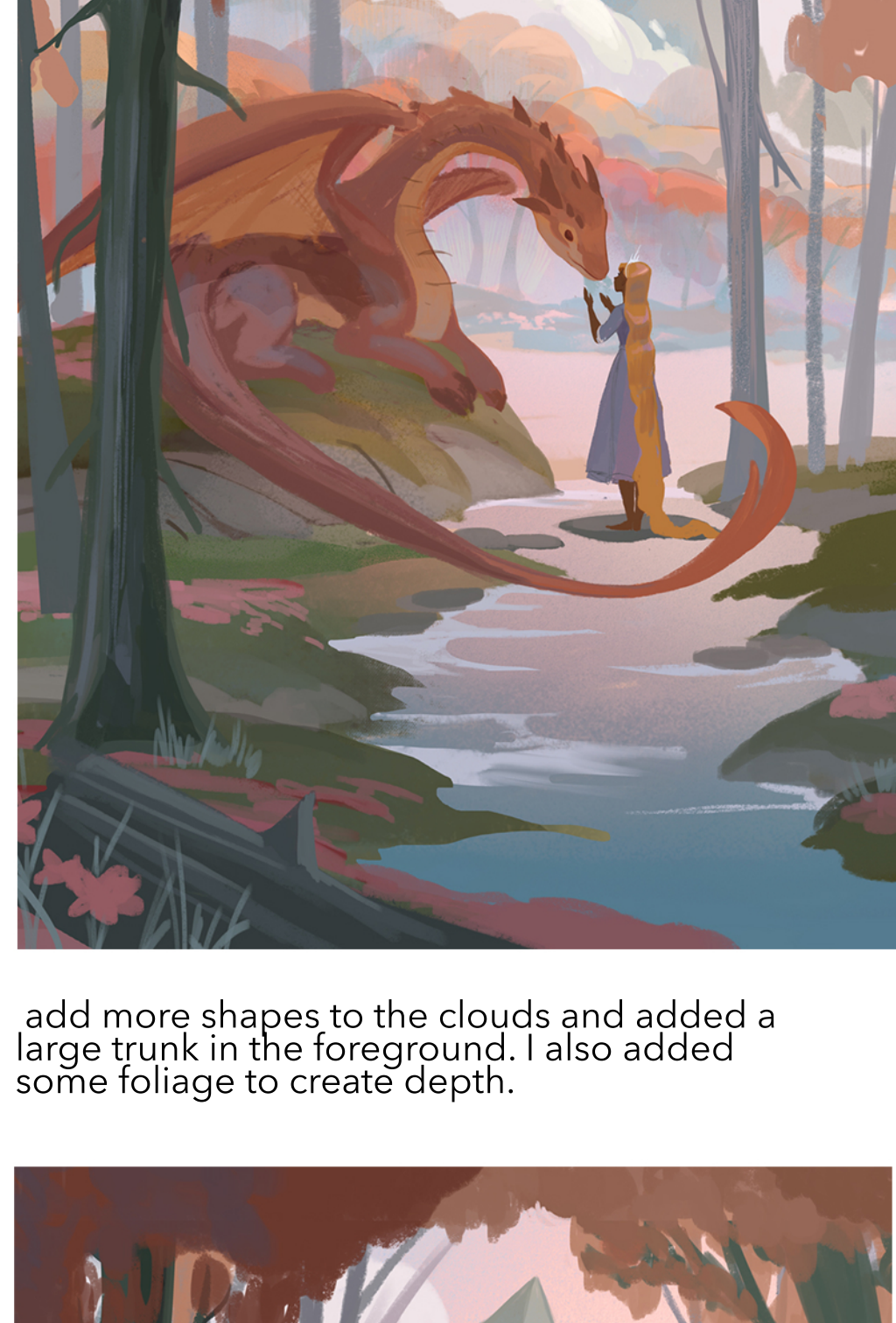


After transferring the file into Photoshop, I continue to add leaves to the trees.

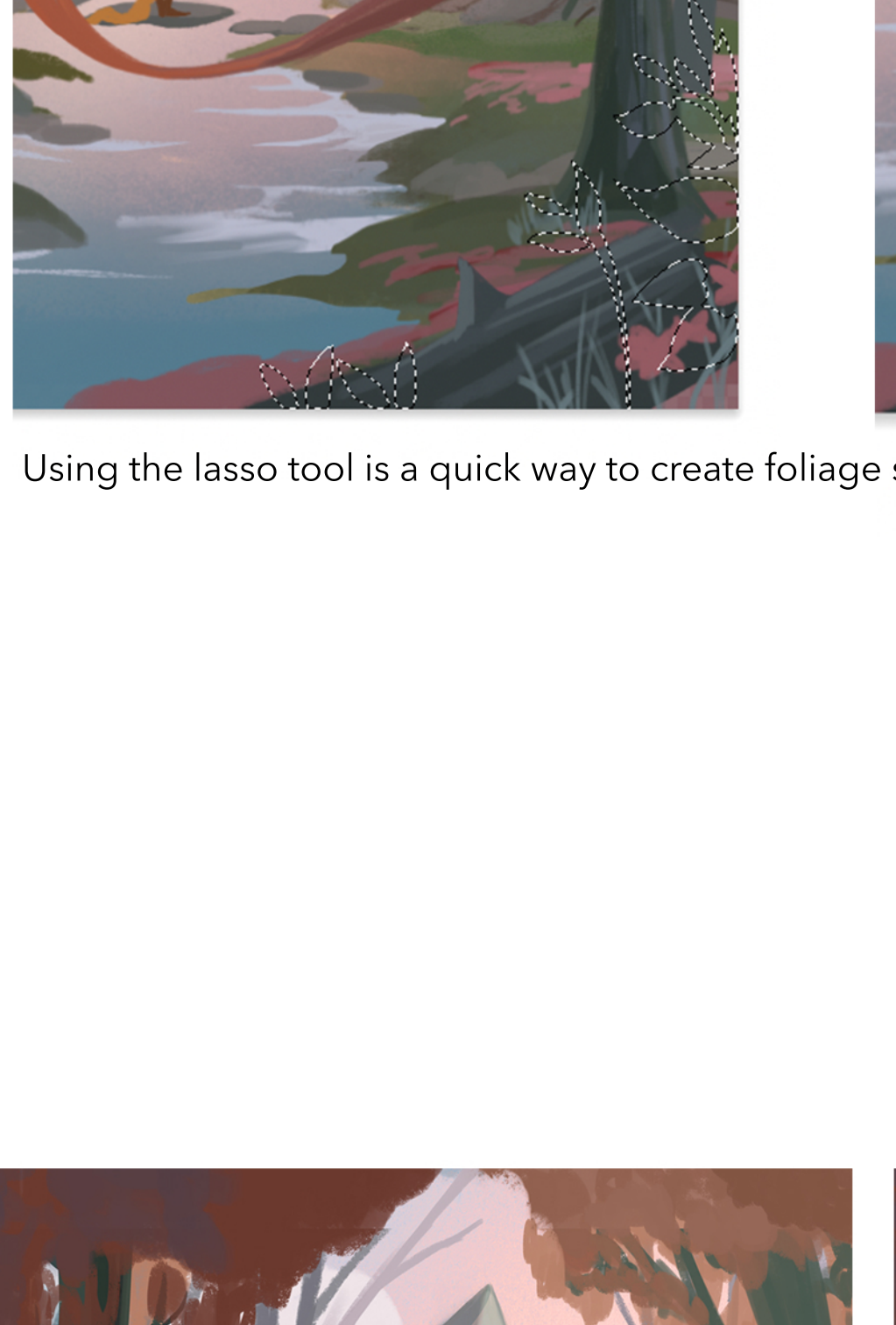


The pink trees in the background are looking a little flat so I decided to add some depth by adding blues to the trees shadows.

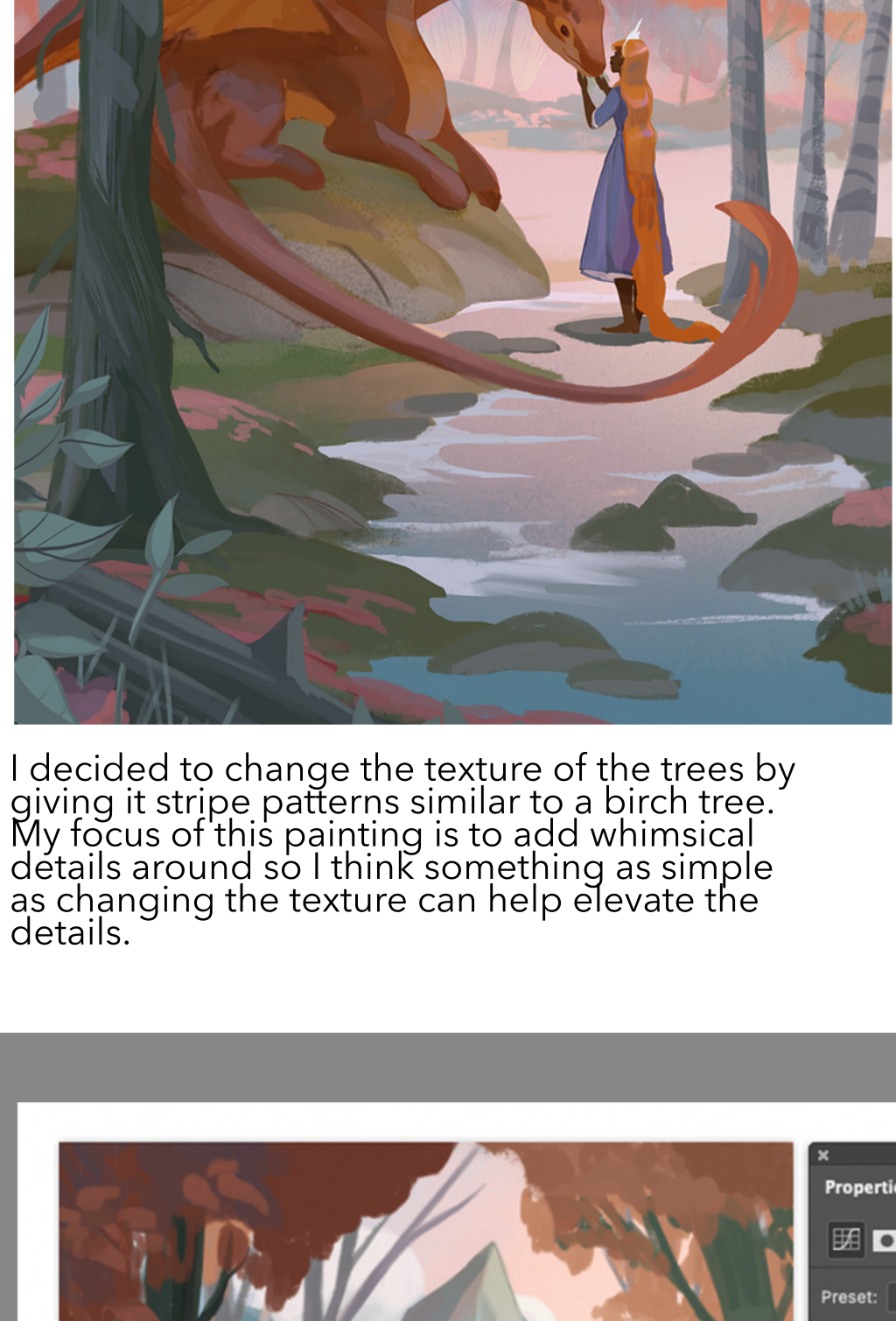
Using similar tones and hues throughout the painting will help create a harmonized colour palette.



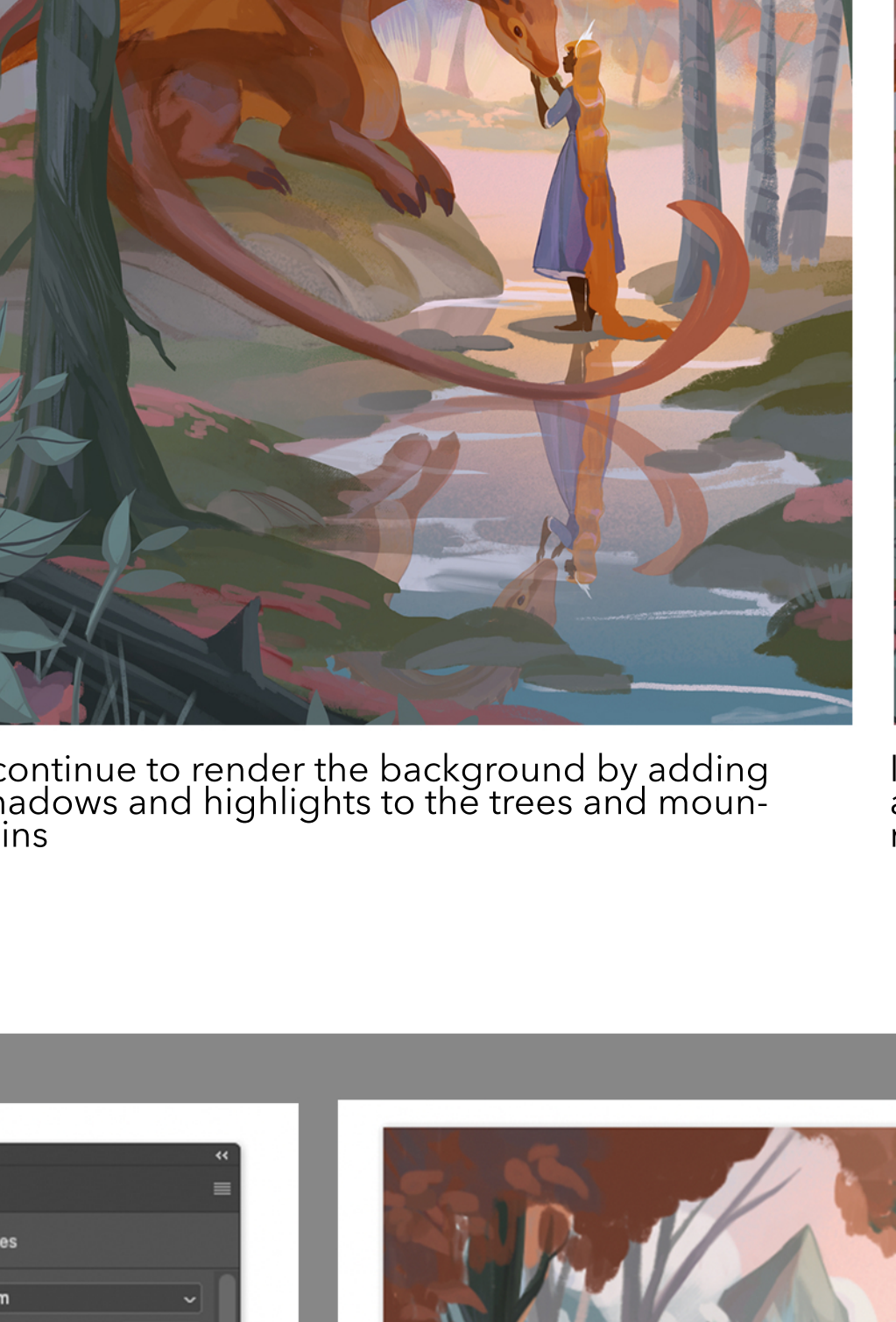
add more shapes to the clouds and added a large trunk in the foreground. I also added some foliage to create depth.



Using the lasso tool is a quick way to create foliage shapes.



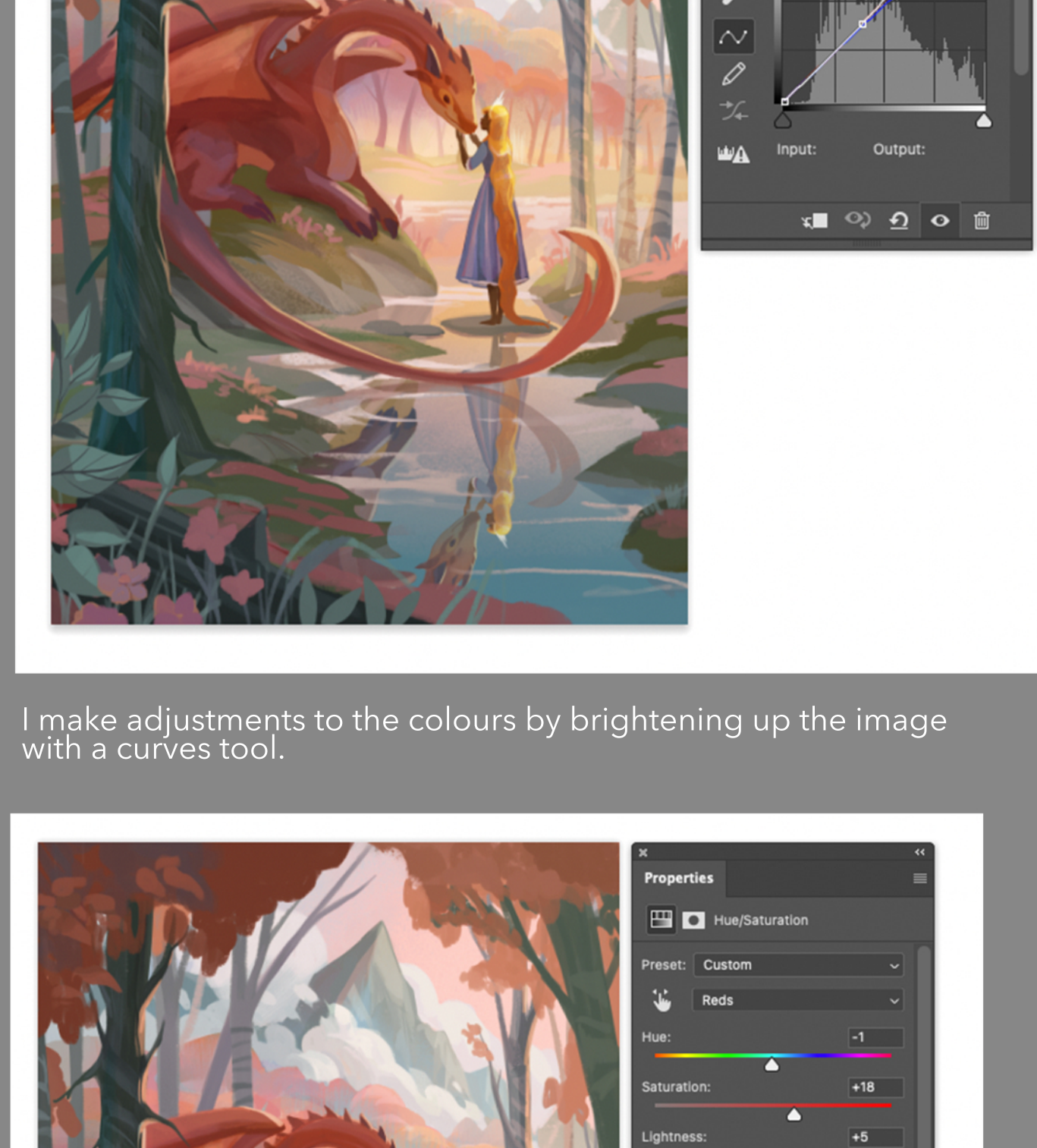
I decided to change the texture of the trees by giving it stripe patterns similar to a birch tree. My focus of this painting is to add whimsical details around so I think something as simple as changing the texture can help elevate the details.



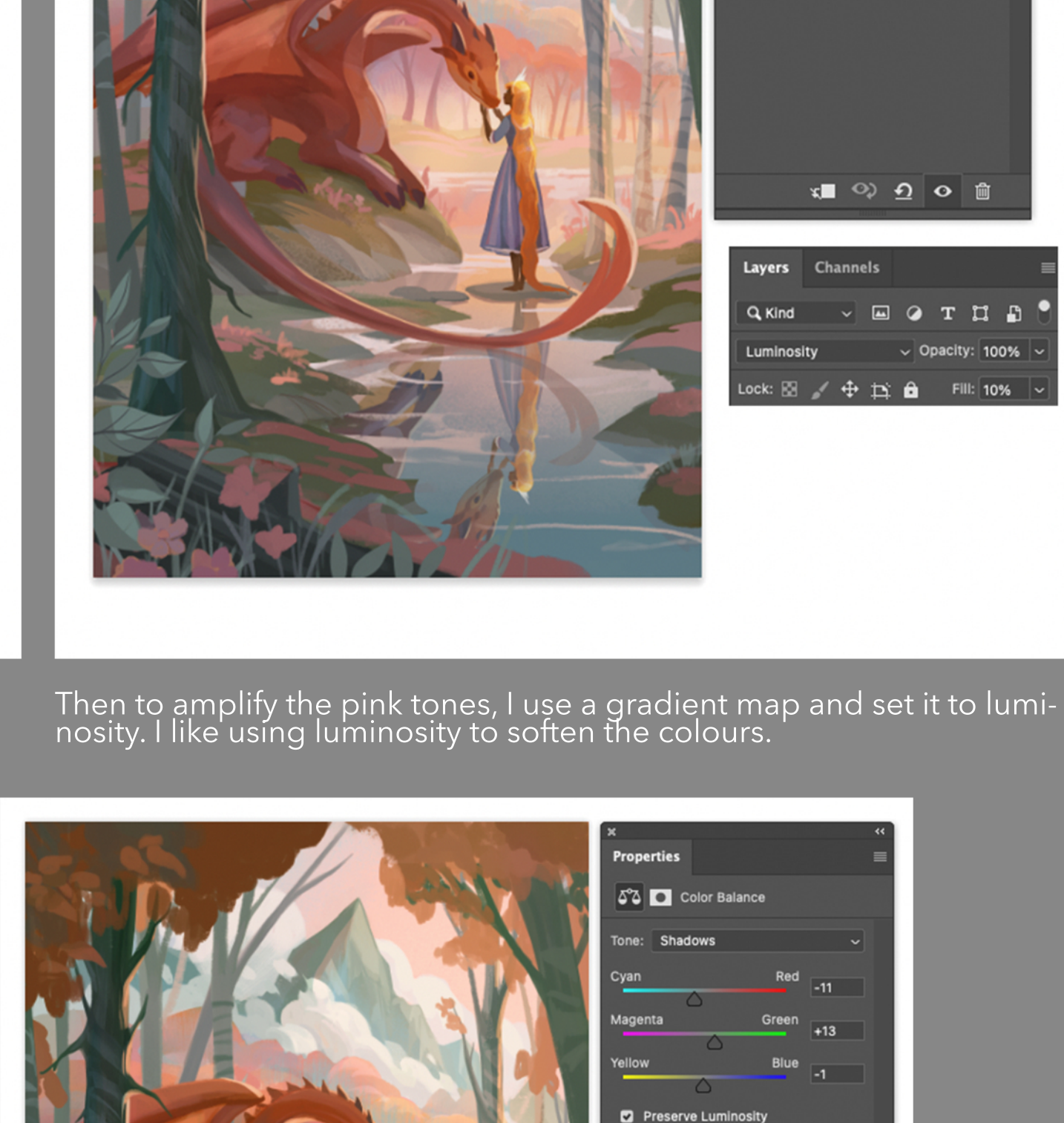
I continue to render the background by adding shadows and highlights to the trees and mountains.



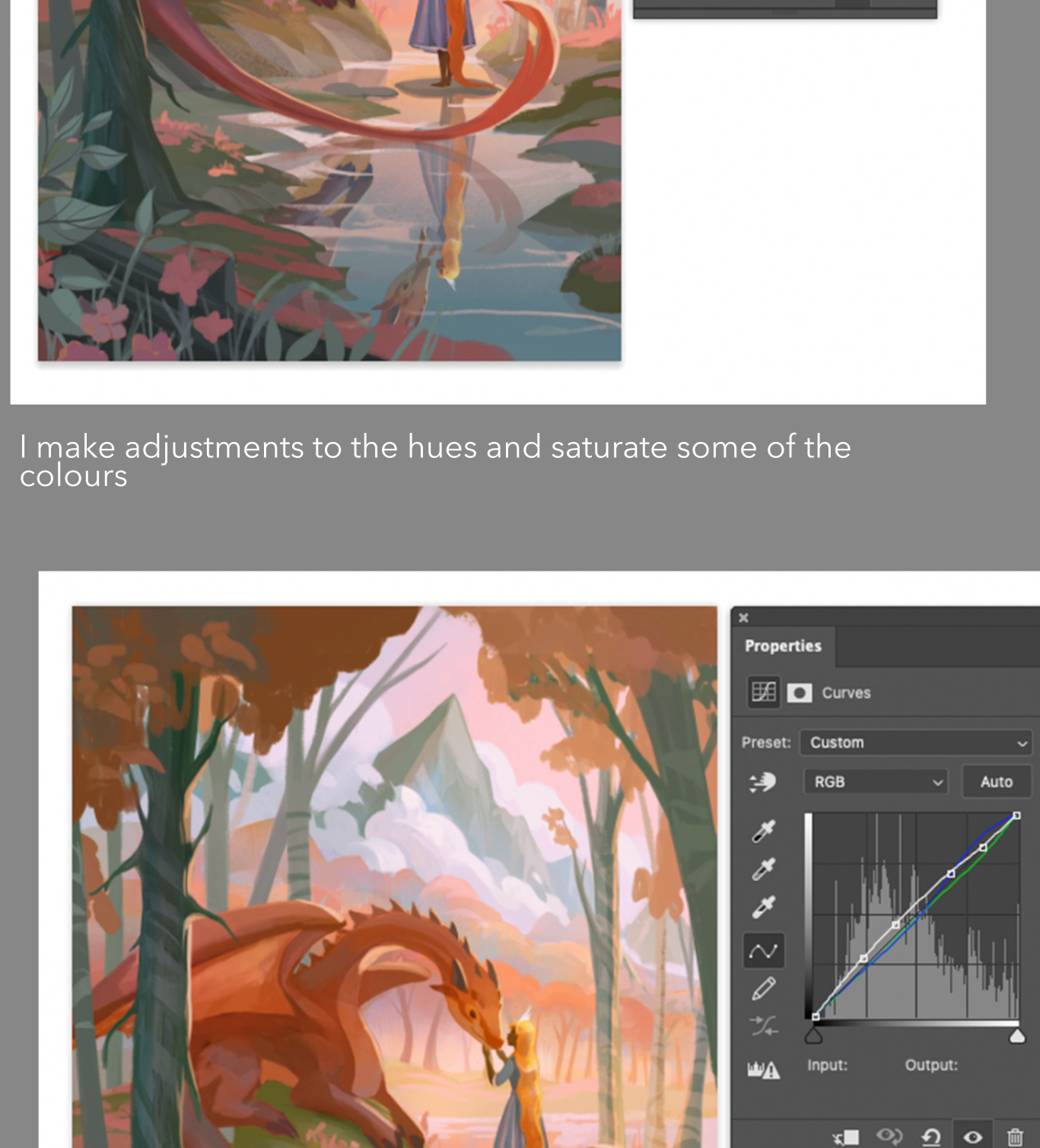
I changed the hue of the trees to a pink colour and also changed the hue of the background to match the pink tones of the background.



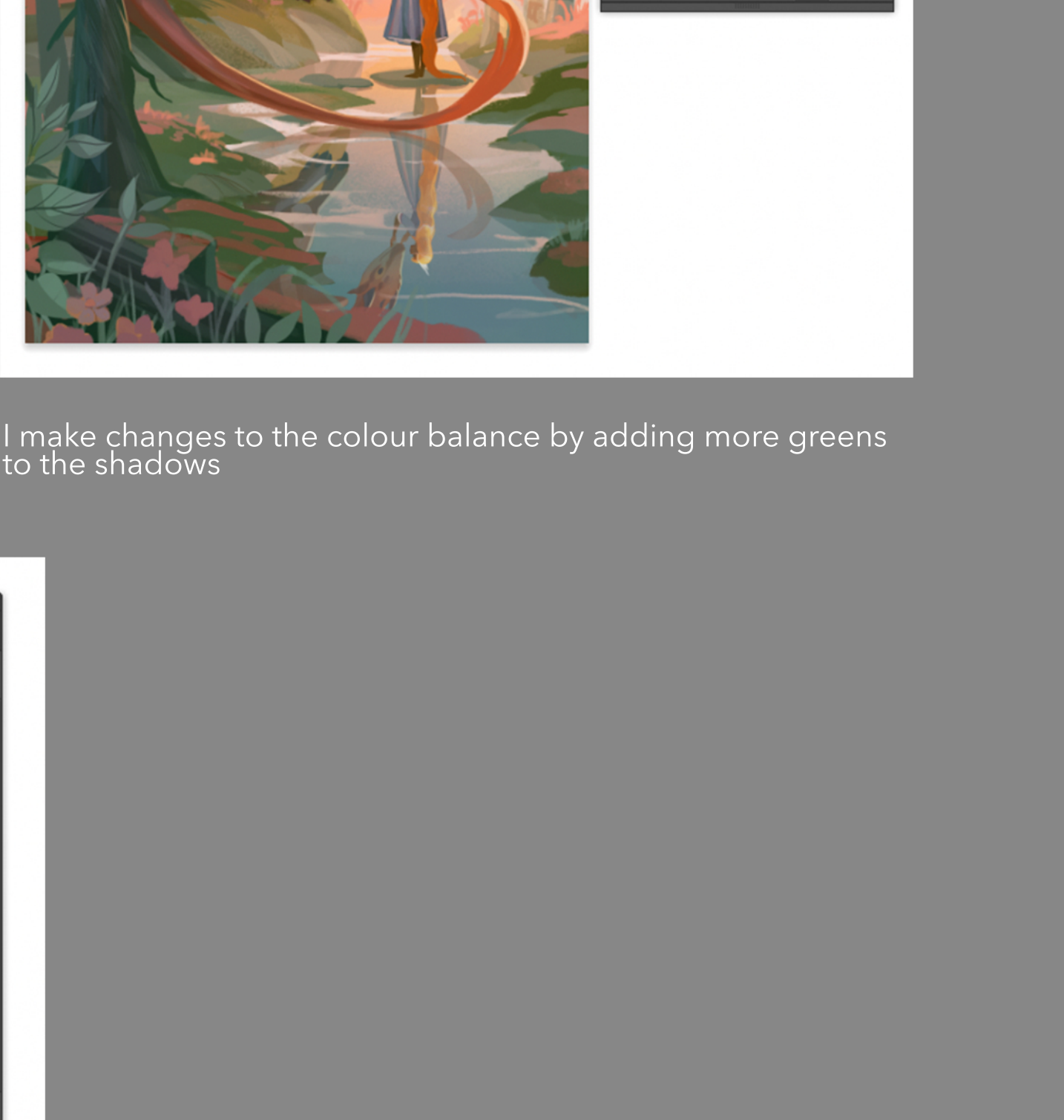
I make adjustments to the colours by brightening up the image with a curves tool.



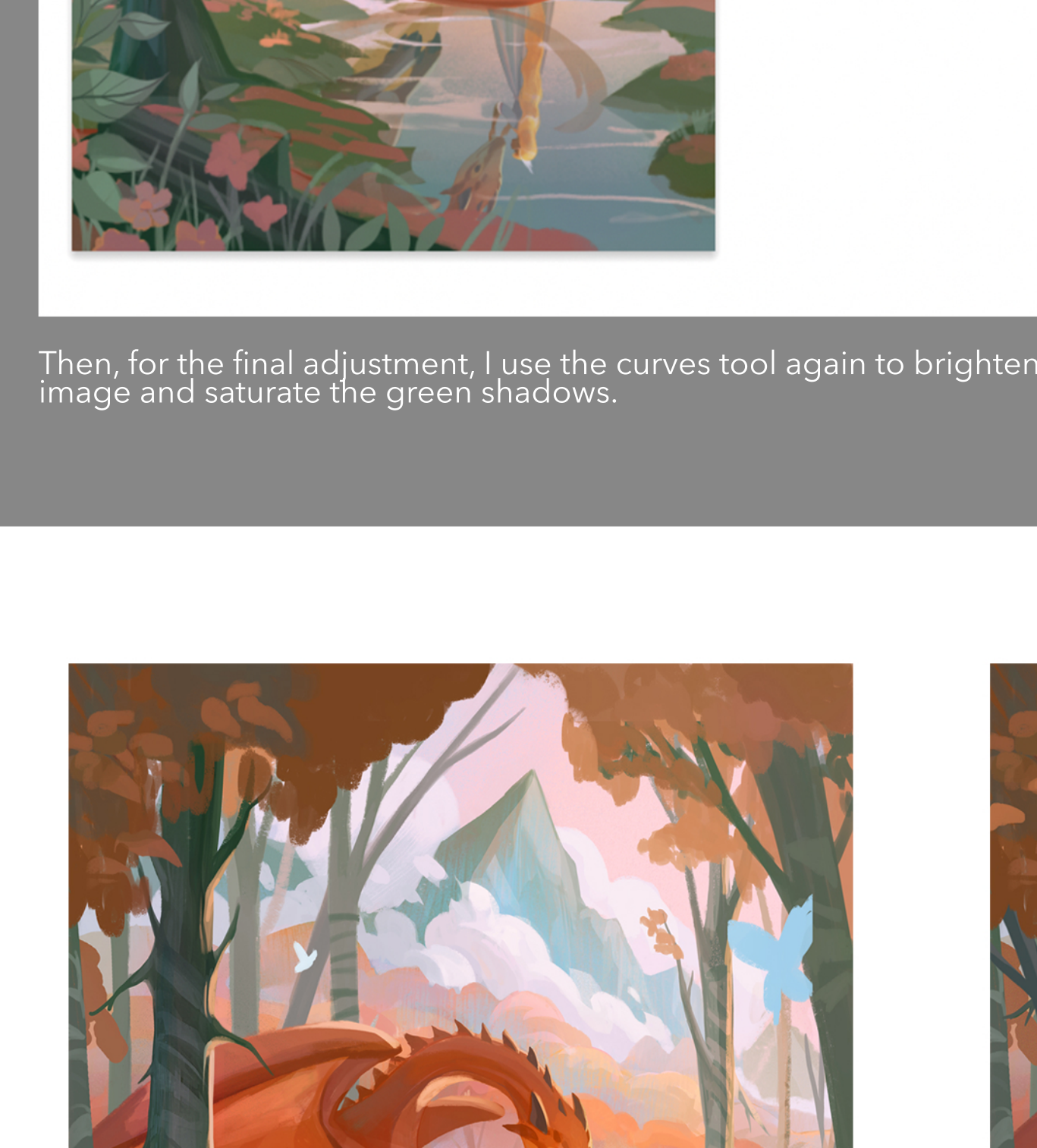
Then to amplify the pink tones, I use a gradient map and set it to luminosity. I like using luminosity to soften the colours.



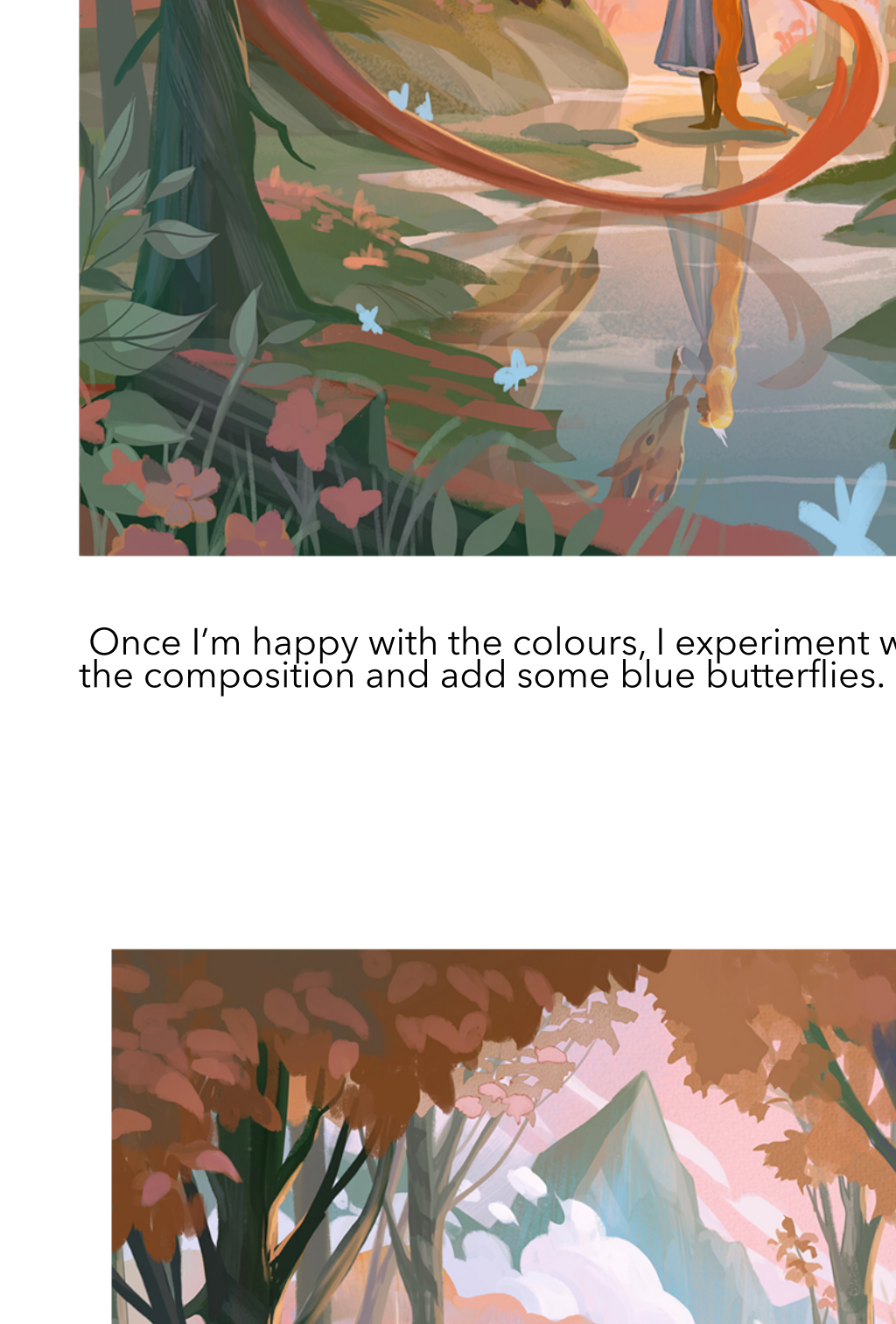
I make adjustments to the hues and saturate some of the colours.



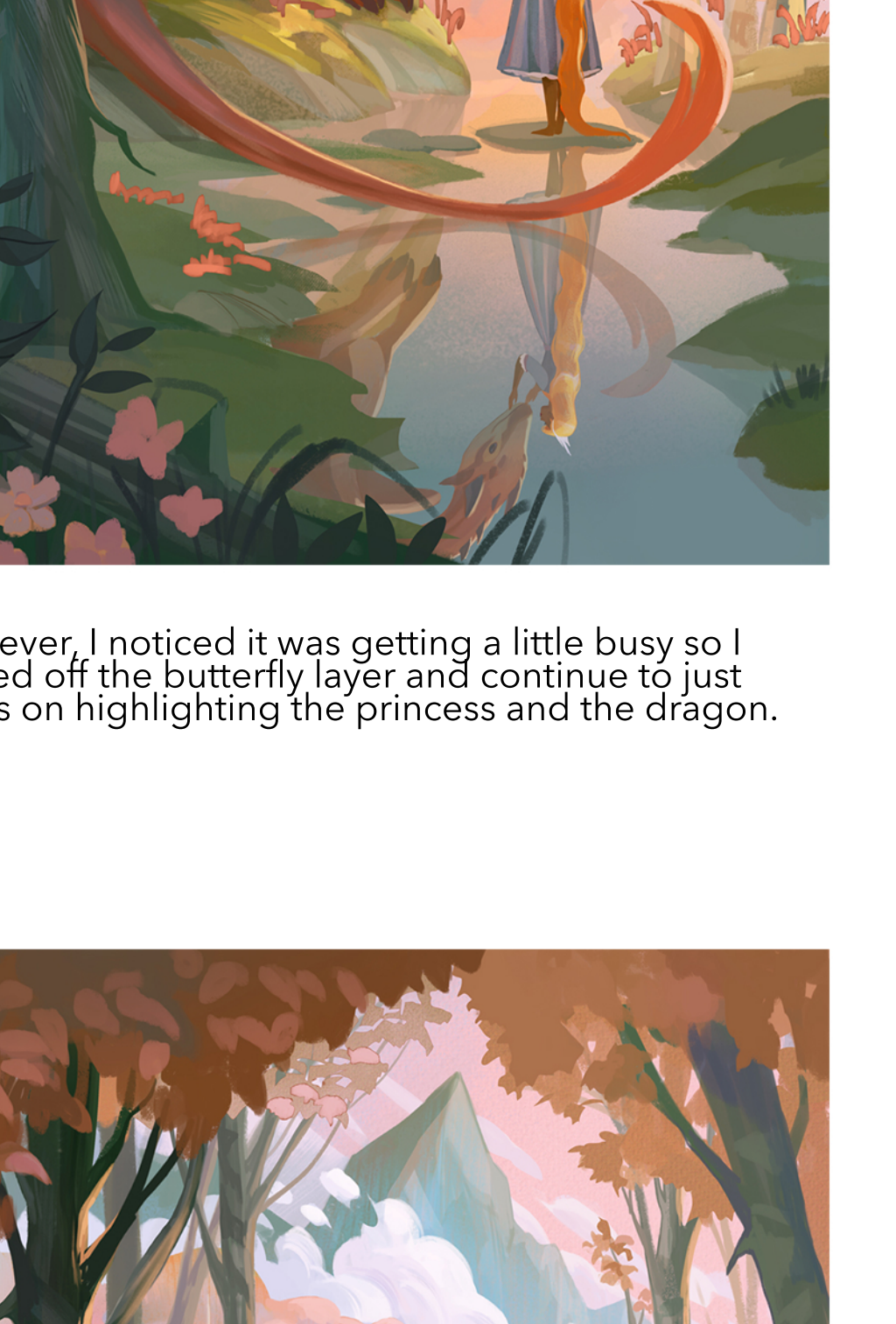
I make changes to the colour balance by adding more greens to the shadows.



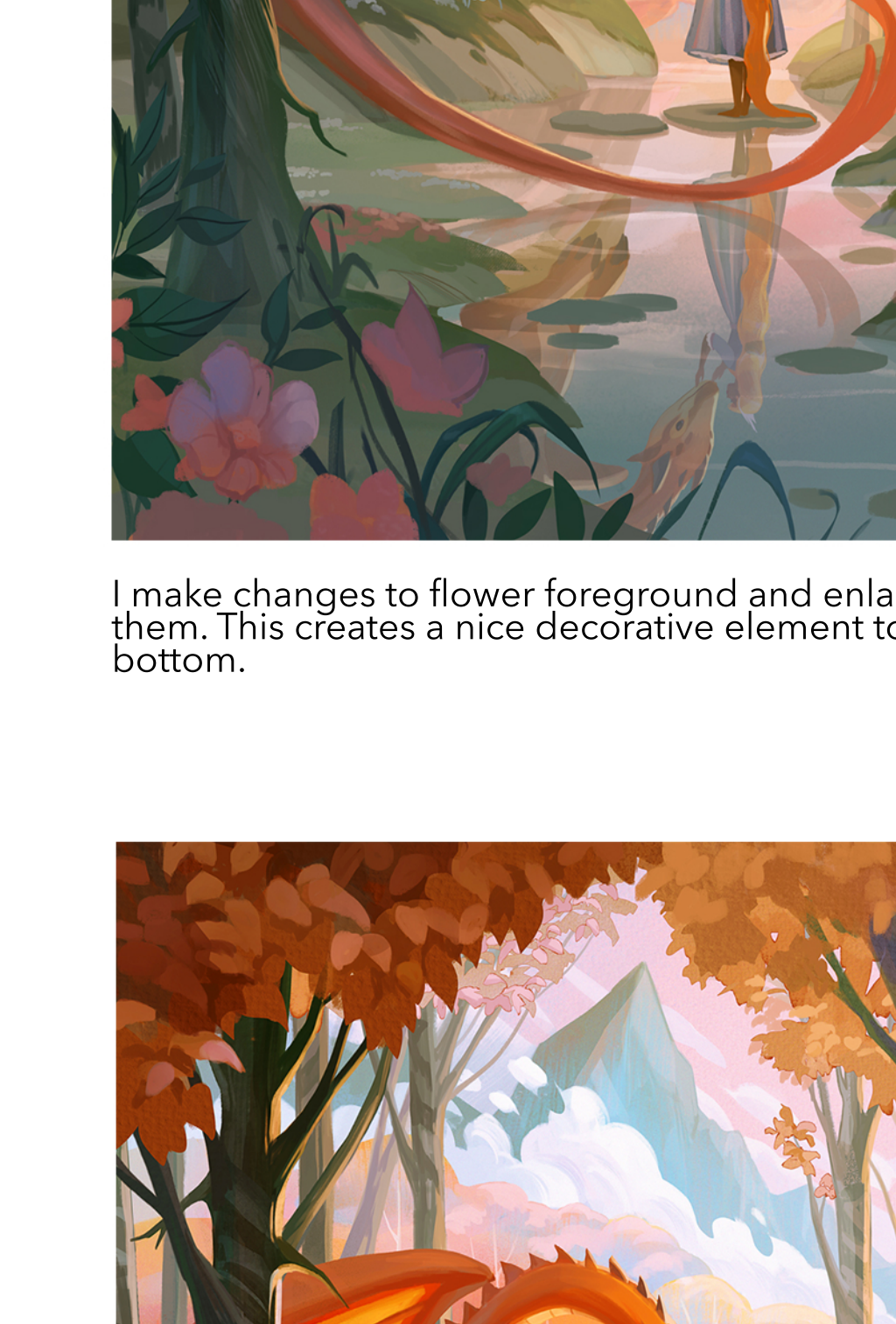
Then, for the final adjustment, I use the curves tool again to brighten the image and saturate the green shadows.



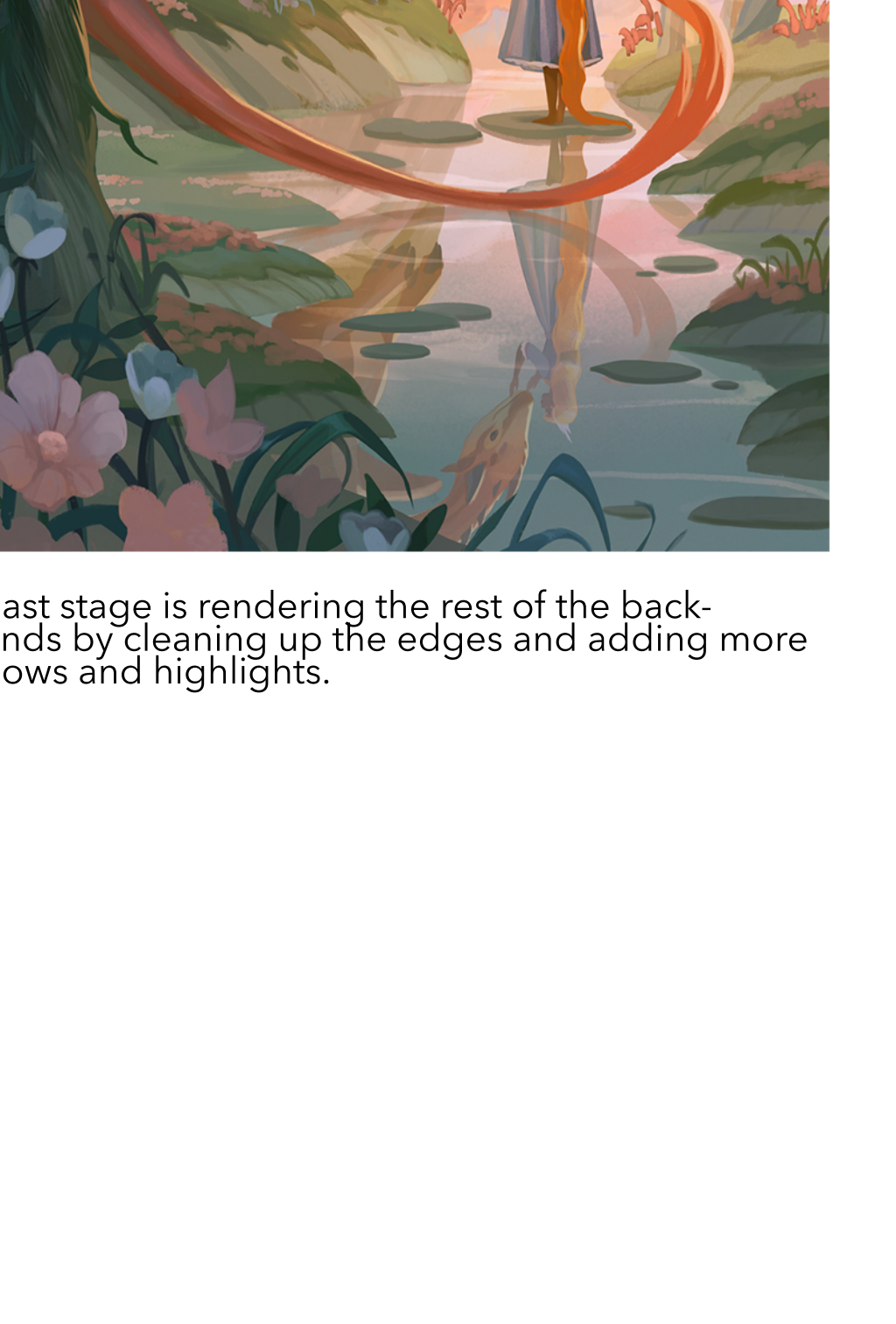
Once I'm happy with the colours, I experiment with the composition and add some blue butterflies.



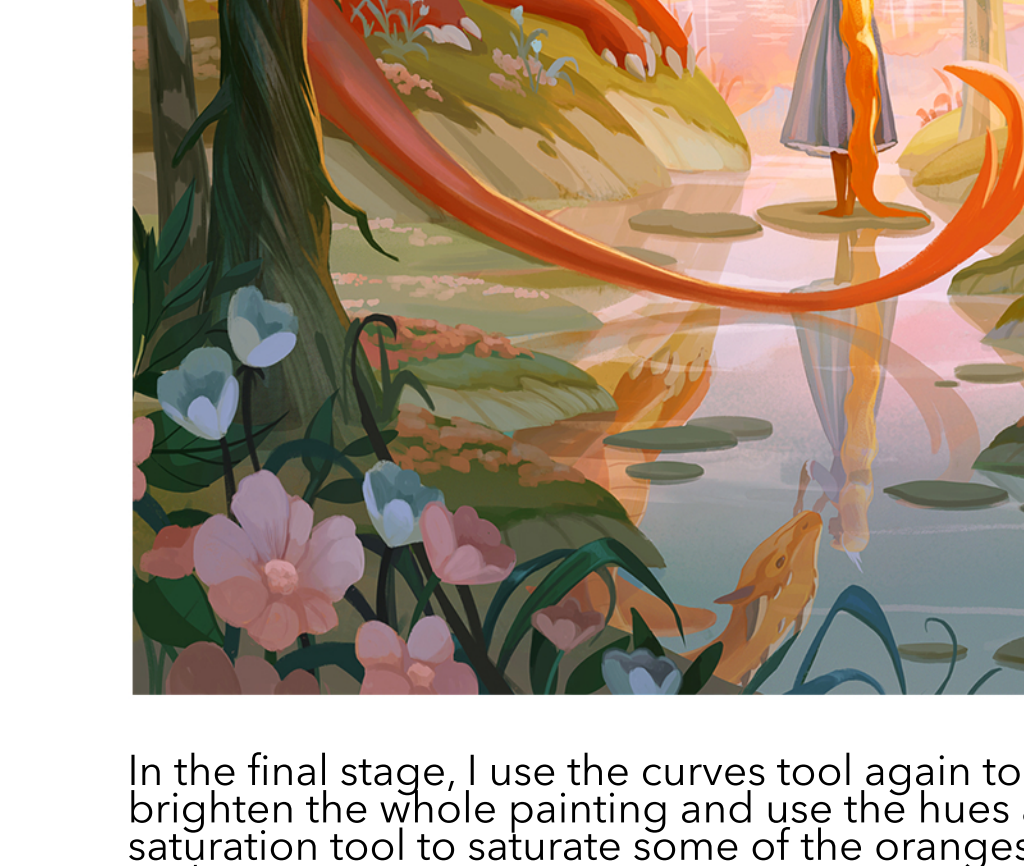
However, I noticed it was getting a little busy so I turned off the butterfly layer and continue to just focus on highlighting the princess and the dragon.



I make changes to flower foreground and enlarge them. This creates a nice decorative element to the bottom.



The last stage is rendering the rest of the backgrounds by cleaning up the edges and adding more shadows and highlights.



In the final stage, I use the curves tool again to brighten the whole painting and use the hues and saturation tool to saturate some of the oranges and pinks.