

My Maternity Leave Plans

HANNAH WITTON



Presentation Outline

Timeline

"Official" Maternity Leave

Public Content

Patreon Content

The Team

Feedback/Questions

Timeline

25TH APRIL - DUE DATE

8TH APRIL - "LAST DAY" OF WORK

**3 MONTHS OFF CONTENT
PRODUCTION + PUBLISHING**

RETURN PART TIME (WTF? TBC)



"Official" Maternity Leave

A laptop screen with a blue background. The text on the screen is white. The top line is "Welcome to GOV.UK". The second line is "The best place to find government services". The third line is "Simpler, clearer, faster".

Welcome to GOV.UK

The best place to find government services

Simpler, clearer, faster

LOL NOPE



RESTRICTED?

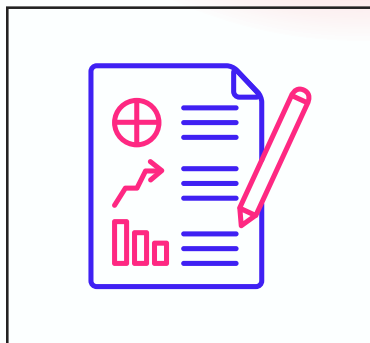


FREE?

Public Content



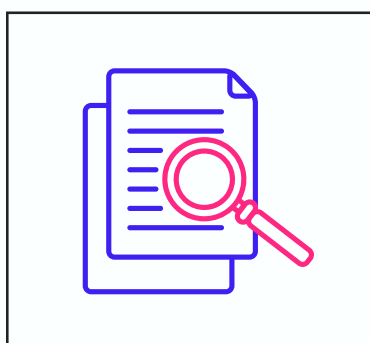
Public Content



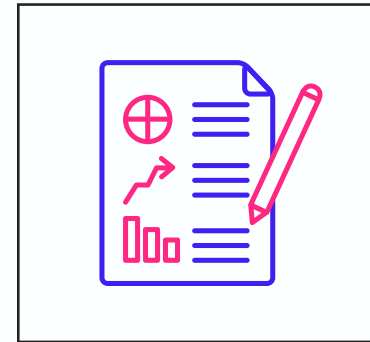
"floating" content



maternity cover
podcast host?



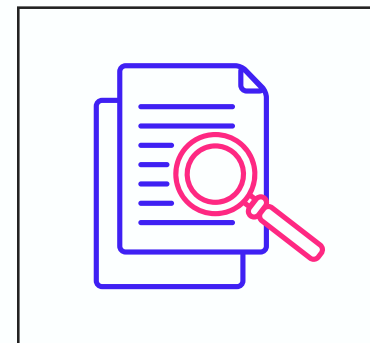
guest hosts for videos?



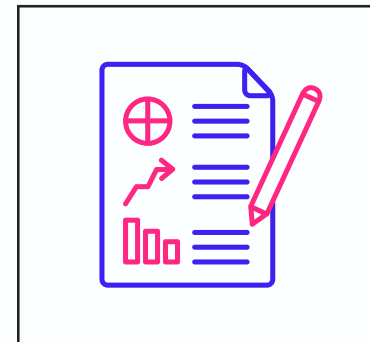
upload schedule after
mat leave?



MH becomes more
vloggy?



newsletter take over



podcast YouTube
channel

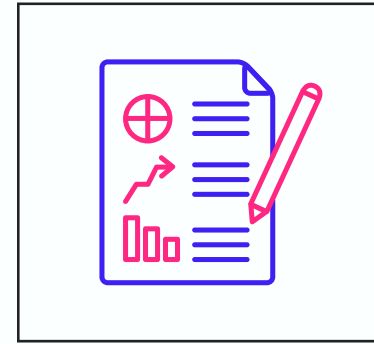


YouTube channel
rebrand

Patreon Content



Patreon Content



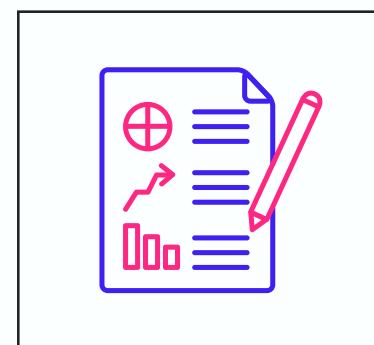
discord



how I'm feeling



reading list?



livestreams?

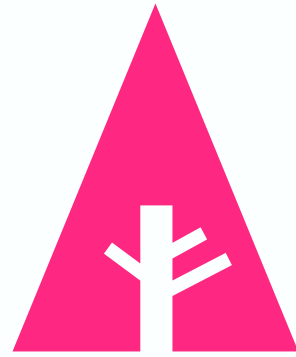


Patreon rebrand

The Team

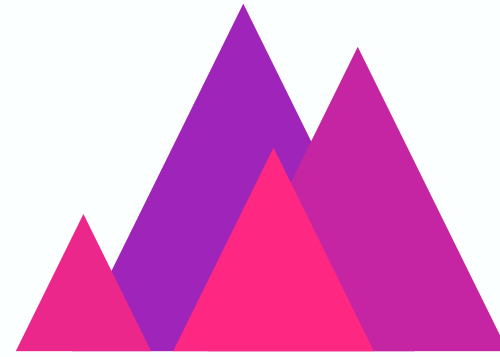


The Team



EDITOR – BECKII

Leaving
Finding new person



PRODUCER – MIA



ASSISTANT – MOOG

Backlogs
Process guides
Prepping for return
Newsletter
Doing It socials
Doing It YouTube
Rebrands

Feedback/Questions