



A PATREON EXCLUSIVE BY CHARM PATTERNS



CHARM SCHOOL UNIFORM

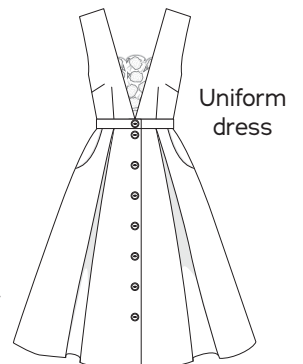


School is in session! I'm so excited to bring you the Charm School Uniform, the first pattern in our new 2024 Patreon theme.

This versatile pattern can be made as a jumper dress to be layered over a blouse, a separate skirt, or even a cocktail dress, depending on your fabric and fit choices.

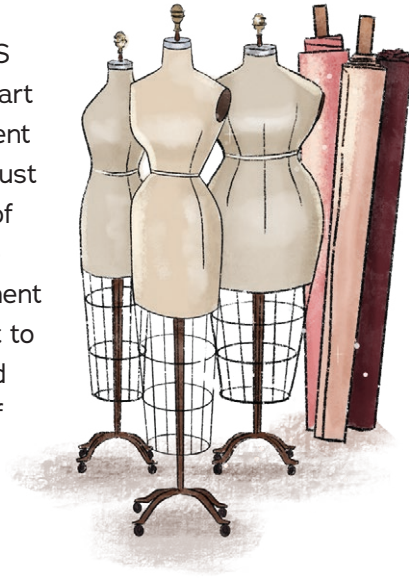
With a fully lined bodice, three-quarter circle skirt with inverted box pleats, and pockets (of course!), our uniform will have you ready for whatever lessons this new year brings!

xoxo, Gertie



SIZE CHART

The Charm School Uniform is sized in women's US 2-20 and 18-34, A-H cup sizes. Please use the chart below to pick your size. The High Bust measurement should be taken above your breasts and the Full Bust measurement should be taken at the fullest part of your bustline. Take the Waist measurement at the smallest part of your torso and the Hip measurement at the widest part of your hips. Note that it is best to choose your size by your bust measurements (and add or remove from the side seams at the waist if needed).



Not sure which size range to choose? Read more about our [new 18-34 size range here!](#)

SIZES

2-20	2	4	6	8	10	12	14	16	18	20
High Bust	29 in 73.7 cm	31 in 78.7 cm	33 in 83.8 cm	35 in 88.9 cm	37 in 94 cm	39 in 99 cm	41 in 104.1 cm	43 in 109.2 cm	45 in 114.3 cm	47 in 119.4 cm
Bust A cup	30.5 in 77.5 cm	32.5 in 82.5 cm	34.5 in 87.6 cm	36.5 in 92.7 cm	38.5 in 97.8 cm	40.5 in 102.9 cm	42.5 in 108 cm	44.5 in 113 cm	46.5 in 118.1 cm	48.5 in 123.2 cm
Bust B/C cup	31 in 78.7 cm	33 in 83.8 cm	35 in 88.9 cm	37 in 94 cm	39 in 99 cm	41 in 104.1 cm	43 in 109.2 cm	45 in 114.3 cm	47 in 119.4 cm	49 in 124.5 cm
Bust D/DD cup	32 in 81.3 cm	34 in 86.4 cm	36 in 91.4 cm	38 in 96.5 cm	40 in 101.6 cm	42 in 106.7 cm	44 in 111.8 cm	46 in 116.8 cm	48 in 121.9 cm	50 in 127 cm
Bust F/G cup	33 in 83.8 cm	35 in 88.9 cm	37 in 94 cm	39 in 99 cm	41 in 104.1 cm	43 in 109.2 cm	45 in 114.3 cm	47 in 119.4 cm	49 in 124.5 cm	51 in 129.5 cm
Bust H cup	34 in 86.4 cm	36 in 91.4 cm	38 in 96.5 cm	40 in 101.6 cm	42 in 106.7 cm	44 in 111.8 cm	46 in 116.8 cm	48 in 121.9 cm	50 in 127 cm	52 in 132.1 cm
Waist	24 in 61 cm	26 in 66 cm	28 in 71.1 cm	30 in 76.2 cm	32 in 81.3 cm	34 in 86.4 cm	36 in 91.4 cm	38 in 96.5 cm	40 in 101.6 cm	42 in 106.7 cm
Hips	36 in 91.4 cm	38 in 96.5 cm	40 in 101.6 cm	42 in 106.7 cm	44 in 111.8 cm	46 in 116.8 cm	48 in 121.9 cm	50 in 127 cm	52 in 132.1 cm	54 in 137.2 cm

SIZES

18-34	18	20	22	24	26	28	30	32	34
High Bust	39.5 in 100.3 cm	41.5 in 105.4 cm	43.5 in 110.5 cm	45.5 in 115.6 cm	47.5 in 120.7 cm	49.5 in 125.7 cm	51.5 in 130.8 cm	53.5 in 135.9 cm	55.5 in 141 cm
Bust A/B cup	42.5 in 108 cm	44.5 in 113 cm	46.5 in 118.1 cm	48.5 in 123.2 cm	50.5 in 128.3 cm	52.5 in 133.4 cm	54.5 in 138.4 cm	56.5 in 143.5 cm	58.5 in 148.6 cm
Bust C cup	43 in 109.2 cm	45 in 114.3 cm	47 in 119.4 cm	49 in 124.5 cm	51 in 129.5 cm	53 in 134.6 cm	55 in 139.7 cm	57 in 144.8 cm	59 in 149.9 cm
Bust D/DD cup	44 in 111.8 cm	46 in 116.8 cm	48 in 121.9 cm	50 in 127 cm	52 in 132.1 cm	54 in 137.2 cm	56 in 142.2 cm	58 in 147.3 cm	60 in 152.4 cm
Bust F/G cup	45 in 114.3 cm	47 in 119.4 cm	49 in 124.5 cm	51 in 129.5 cm	53 in 134.6 cm	55 in 139.7 cm	57 in 144.8 cm	59 in 149.9 cm	61 in 154.9 cm
Bust H cup	46 in 116.8 cm	48 in 121.9 cm	50 in 127 cm	52 in 132.1 cm	54 in 137.2 cm	56 in 142.2 cm	58 in 147.3 cm	60 in 152.4 cm	62 in 157.5 cm
Waist	40 in 101.6 cm	42 in 106.7 cm	44 in 111.8 cm	46 in 116.8 cm	48 in 121.9 cm	50 in 127 cm	52 in 132.1 cm	54 in 137.2 cm	56 in 142.2 cm
Hips	48 in 121.9 cm	50 in 127 cm	52 in 132.1 cm	54 in 137.2 cm	56 in 142.2 cm	58 in 147.3 cm	60 in 152.4 cm	62 in 157.5 cm	64 in 162.6 cm



Pick the right level for you

The Charm School Uniform is a perfect project for sewists of all levels, and the companion step-by-step video will guide you through each section of the instructions.

BEGINNER

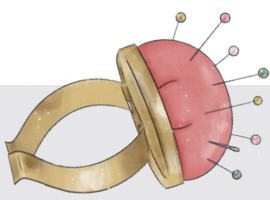
Follow the written instructions along with the companion video to create the Charm School Uniform dress or separate skirt in any of the recommended cotton, linen, or wool fabrics with a cotton lawn lining. Slow down so you can enjoy each step of the process and practice patience when it gets challenging.

INTERMEDIATE

Sew the Charm School Uniform using the instructions and/or video, focusing on the skills of pressing perfect darts and understitching. Use any of the recommended fabrics or linings; a silky lining is a great challenge!

ADVANCED

Sew the Charm School Uniform as a cocktail dress in silk with a scalloped lace inset. Test your fitting skills by adjusting the sizing based on your test muslin; you may wish to size down or grade between sizes to get the perfect fit. Consider lining the skirt as well, adjusting the instructions as needed.



FABRIC NOTES

We recommend light-to medium-weight wovens:

cottons like denim, corduroy, sateen, and twill; linen and linen blends; silks with body like dupioni and shantung; wool suitings, flannel, and tweed; brocade; or silk/wool blends. Stretch wovens are suitable, but knit fabrics are not recommended for this design.

For the dress lining, we recommend lightweight silks like charmeuse, crepe de chine, or habotai; lining fabrics like rayon bemberg, acetate, or silky polyester; cotton lawn; and silk/cotton blends.

For the optional front inset panel, we recommend using your fashion fabric, a contrast fabric, or lace or embroidered tulle with a coordinating organza or tulle used as a lining.

MATERIALS & NOTIONS

- Fabric for the dress
- Lining fabric
- Fabric or lace and lining fabric for the front inset panel (optional)
- Thread to match
- Lightweight woven fusible interfacing
- Eight 1-in (2.5-cm) buttons
- Ten 1/0 sew-on snaps (for the front inset panel)

FIT NOTES

The Charm School Uniform is a sleeveless button-front dress designed to be worn as a layering piece. It has a deep V-front open to the waist, a waistband, and a three-quarter circle skirt with inverted box pleats.

As a layering piece, the pattern is designed to fit with 3½ inches (in) (8.9 cm) of ease in the bust and 1½ to 1¾ in (3.8 to 4.4 cm) of ease at the waist. Hip ease does not matter as the skirt is very full.

To wear the Charm School Uniform on its own as a dress or separate skirt, you may wish to size down so the finished measurements are closer to your body's measurements.

See the charts below for finished garment measurements.

FINISHED MEASUREMENTS

Sizes 2-20	2	4	6	8	10	12	14	16	18	20
Bust A	34 in 86.4 cm	36 in 91.4 cm	38 in 96.5 cm	40 in 101.6 cm	42 in 106.7 cm	44 in 111.8 cm	46 in 116.8 cm	48 in 121.9 cm	50 in 127 cm	52 in 132.1 cm
Bust B/C	34.5 in 87.6 cm	36.5 in 92.7 cm	38.5 in 97.8 cm	40.5 in 102.9 cm	42.5 in 108 cm	44.5 in 113 cm	46.5 in 118.1 cm	48.5 in 123.2 cm	50.5 in 128.3 cm	52.5 in 133.4 cm
Bust D/DD	35.5 in 90.2 cm	37.5 in 95.3 cm	39.5 in 100.3 cm	41.5 in 105.4 cm	43.5 in 110.5 cm	45.5 in 115.6 cm	47.5 in 120.7 cm	49.5 in 125.7 cm	51.5 in 130.8 cm	53.5 in 135.9 cm
Bust F/G	36.5 in 92.7 cm	38.5 in 97.8 cm	40.5 in 102.9 cm	42.5 in 108 cm	44.5 in 113 cm	46.5 in 118.1 cm	48.5 in 123.2 cm	50.5 in 128.3 cm	52.5 in 133.4 cm	54.5 in 138.4 cm
Bust H	37.5 in 95.3 cm	39.5 in 100.3 cm	41.5 in 105.4 cm	43.5 in 110.5 cm	45.5 in 115.6 cm	47.5 in 120.7 cm	49.5 in 125.7 cm	51.5 in 130.8 cm	53.5 in 135.9 cm	55.5 in 141 cm
Waist	25.75 in 65.4 cm	27.75 in 70.5 cm	29.75 in 75.6 cm	31.75 in 80.6 cm	33.75 in 85.7 cm	35.75 in 90.8 cm	37.75 in 95.9 cm	39.75 in 101 cm	41.75 in 106 cm	43.75 in 111.1 cm
Hips	68.5 in 174 cm	70.5 in 179.1 cm	72.5 in 184.2 cm	74.5 in 189.2 cm	76.5 in 194.3 cm	78.5 in 199.4 cm	80.5 in 204.5 cm	82.5 in 209.6 cm	84.5 in 214.6 cm	86.5 in 219.7 cm
CF Skirt Length	28 in 71.1 cm	28 in 71.1 cm	28 in 71.1 cm	28 in 71.1 cm	28 in 71.1 cm	28 in 71.1 cm	28 in 71.1 cm	28 in 71.1 cm	28 in 71.1 cm	28 in 71.1 cm

Sizes 18-34	18	20	22	24	26	28	30	32	34
Bust A/B	46 in 116.8 cm	48 in 121.9 cm	50 in 127 cm	52 in 132.1 cm	54 in 137.2 cm	56 in 142.2 cm	58 in 147.3 cm	60 in 152.4 cm	62 in 157.5 cm
Bust C	46.5 in 118.1 cm	48.5 in 123.2 cm	50.5 in 128.3 cm	52.5 in 133.4 cm	54.5 in 138.4 cm	56.5 in 143.5 cm	58.5 in 148.6 cm	60.5 in 153.7 cm	62.5 in 158.8 cm
Bust D/DD	47.5 in 120.7 cm	49.5 in 125.7 cm	51.5 in 130.8 cm	53.5 in 135.9 cm	55.5 in 141 cm	57.5 in 146.1 cm	59.5 in 151.1 cm	61.5 in 156.2 cm	63.5 in 161.3 cm
Bust F/G	48.5 in 123.2 cm	50.5 in 128.3 cm	52.5 in 133.4 cm	54.5 in 138.4 cm	56.5 in 143.5 cm	58.5 in 148.6 cm	60.5 in 153.7 cm	62.5 in 158.8 cm	64.5 in 163.8 cm
Bust H	49.5 in 125.7 cm	51.5 in 130.8 cm	53.5 in 135.9 cm	55.5 in 141 cm	57.5 in 146.1 cm	59.5 in 151.1 cm	61.5 in 156.2 cm	63.5 in 161.3 cm	65.5 in 166.4 cm
Waist	41.5 in 105.4 cm	43.5 in 110.5 cm	45.5 in 115.6 cm	47.5 in 120.7 cm	49.5 in 125.7 cm	51.5 in 130.8 cm	53.5 in 135.9 cm	55.5 in 141 cm	57.5 in 146.1 cm
Hips	80 in 203.2 cm	82 in 208.3 cm	84 in 213.4 cm	86 in 218.4 cm	88 in 223.5 cm	90 in 228.6 cm	92 in 233.7 cm	94 in 238.8 cm	96 in 243.8 cm
CF Skirt Length	28 in 71.1 cm	28 in 71.1 cm	28 in 71.1 cm	28 in 71.1 cm	28 in 71.1 cm	28 in 71.1 cm	28 in 71.1 cm	28 in 71.1 cm	28 in 71.1 cm

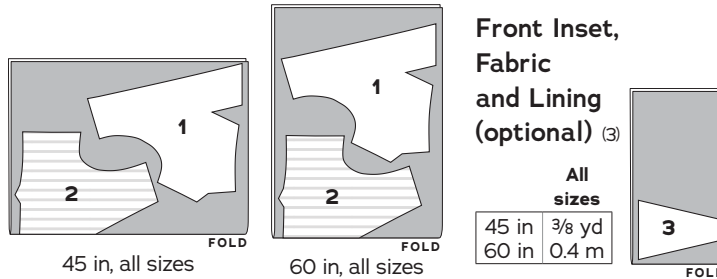


REQUIRED YARDAGE & CUTTING LAYOUTS

NOTE: All pattern pieces are shown in a “without nap” layout. You may need additional yardage for directional prints, stripes, plaids, and other prints that need to be matched across seamlines.

Bodice, Fabric and Lining (1, 2)

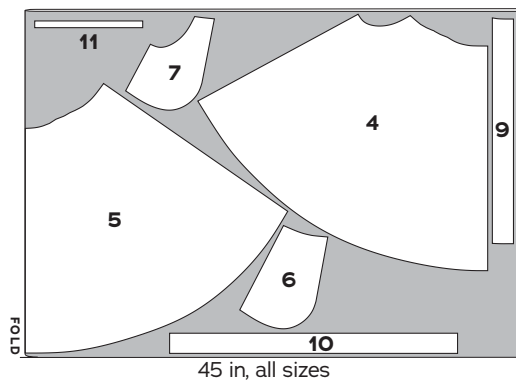
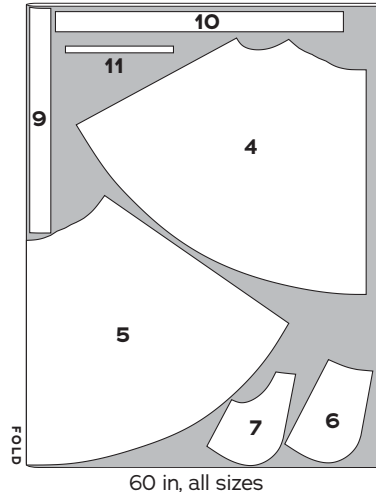
	Sizes 2-10	Sizes 12-20	Sizes 18-24	Sizes 26-34
45 in	7/8 yd 0.8 m	7/8 yd 0.8 m	7/8 yd 0.8 m	7/8 yd 0.8 m
60 in	5/8 yd 0.6 m	5/8 yd 0.6 m	5/8 yd 0.6 m	5/8 yd 0.6 m



Fabric, Skirt (4, 5, 6, 7, 9, 10, 11*)

	Sizes 2-10	Sizes 12-20	Sizes 18-24	Sizes 26-34
45 in	3 1/2 yds 3.2 m	3 7/8 yds 3.5 m	4 yds 3.7 m	4 1/4 yds 3.9 m
60 in	2 5/8 yds 2.4 m	3 yds 2.7 m	3 yds 2.7 m	3 5/8 yds 3.3 m

*Use 11 if making separate skirt only.



NOTE: The skirt should be cut on a crosswise layout, as shown. Open up the full width of the fabric and make a fold perpendicular to the selvages.

Also note that for both widths of fabric, all skirt pieces must be rotated crosswise.

Interfacing (8, 9, 10, 11*)

All sizes	
60 in	3/8 yd 0.4 m

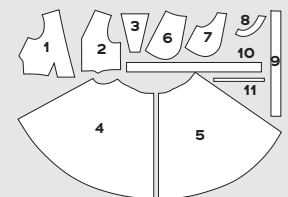
*Use 11 if making separate skirt only.



PATTERN PIECES



- Bodice Front**
Cut 2 fabric, 2 lining
- Bodice Back**
Cut 1 fabric on fold, 1 lining on fold
- Bodice Front Inset**
Cut 1 fabric, 1 lining or 1 lace, 2 organza
- Skirt Front**
Cut 2 fabric
- Skirt Back**
Cut 1 fabric on fold
- Skirt Side Front**
Cut 2 fabric
- Skirt Pocket Bag**
Cut 2 fabric or lining
- Skirt Pocket Interfacing**
Cut 2 interfacing
- Skirt Front Facing**
Cut 2 fabric, 2 interfacing
- Waistband**
Cut 2 fabric, 1 interfacing
- Belt Loops**
Cut 1 fabric, 1 interfacing



KEY TO LAYOUTS

- Right side of pattern piece
- Wrong side of pattern piece

Be sure to note whether the pieces are cut on a double or single layer of fabric. For a double layer, there will be a note indicating FOLD on the layout.

SEWING INSTRUCTIONS

BEFORE SEWING

Transferring marks: use dressmaker's tracing paper and a tracing wheel to transfer all pattern markings to the wrong side (WS) of your fabric. Mark pattern notches by snipping into the seam allowance with the tip of your scissors.

Interfacing: some of the pattern pieces need to be stabilized with fusible interfacing prior to sewing. Follow the interfacing cutting instructions on the pattern pieces. Apply fusible interfacing to the WS of the fabric, using a press cloth and steam. Do not rub your iron back and forth; lift it up and press it down for several seconds at a time until interfacing is fully adhered.

Seam Finishing: if finishing seams with a serger, serge the following seam allowances (without trimming the edges) before construction. If you don't have a serger, consider using a zigzag or overlock stitch on your sewing machine. The bodice and waistband are fully lined, so seam finishing is not necessary.

- Skirt vertical side seams
- Free edge of Skirt Front Facing
- Curved lower edge of both Skirt Side Front and Skirt Pocket Bag
- Skirt Side Front straight side seam edge
- Belt Loops long edges

NOTES

- 5/8-in (1.5 cm) seam allowances are included on all pattern pieces, except where otherwise noted.
- Press your stitching lines after every step, even when not specified in the instructions.

SEW THE CHARM SCHOOL UNIFORM

If you are sewing the skirt separate, skip to the Skirt section on page 9. Otherwise, begin with the Bodice section.

BODICE

1. Staystitch neckline: on Bodice Front (1), using a 1/2-in (1.3 cm) seam allowance, staystitch center front (CF) opening from each shoulder to the waistline.

On Bodice Back (2), repeat staystitching from each shoulder to the center back (CB) point. Clip to the CB point, being careful not to clip past the stitching. Repeat for the bodice front and back linings.

2. Sew front waist darts: the bodice front waist darts have a cut-out section. To sew, match the dart's cut edges right sides (RS) together, and stitch 5/8 in (1.5 cm)

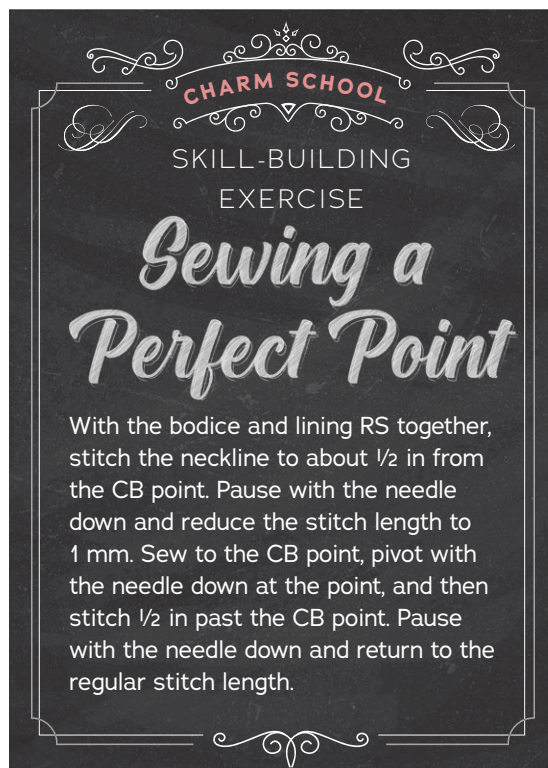
from the raw edge, starting from the waistline edge and stitching to the dart point circle. Backstitch at the beginning but not at the end, leaving a thread tail a few inches long. Tie thread tails by hand. Cut the dart tip open to just below the circle. Press dart legs open and tip of dart flat. Repeat for bodice front lining.

3. Sew bust darts: on bodice front, bring bust dart legs RS together, pinning along marked lines. Stitch along marked lines from dart base to dart point. Backstitch at the beginning but not at the end, leaving a thread tail a few inches long. Tie thread tails by hand. Press darts down. Repeat for the bodice front lining.

4. Sew back waist darts: repeat the previous step to sew the bodice back waist darts. Press darts to CB. Repeat for bodice back lining.

5. Sew shoulder seams: pin bodice fronts to bodice back at shoulder seam, RS together. Stitch. Press seam allowances open. Repeat for bodice linings.

6. Sew lining to bodice: pin lining unit to bodice unit around neckline, RS together. Stitch around neckline, starting at one waistline edge, pivoting at the CB circle, and ending at the other waistline edge. Grade seam allowances so those on the bodice are wider and those



on the lining are narrower. Clip into neckline curves every 1/2 in (1.3 cm). Clip into seam allowance at CB point.

7. Understitch neckline: from RS, with lining opened out from bodice and seam allowances underneath, stitch the lining 1/8 in (3 mm) from the seamline, catching seam allowances in stitching. Start understitching at one CF waistline edge and end at opposite side, breaking stitching at CB point as necessary. Turn lining to bodice WS and press neckline edge, rolling seamline slightly so it is hidden inside the bodice.

8. Finish armholes: pin lining armholes to bodice armholes, RS together, matching notches and shoulder seams. Stitch around each armhole. Grade seam allowances so those on the bodice are widest. Clip into armhole curve every 1/2 in (1.3 cm).

9. Turn lining to WS: turn the bodice RS out, reaching through each bodice back shoulder and pulling bodice fronts through.

10. Understitch armholes: understitch each armhole as for neckline, sewing the front and back of the armhole separately. Break stitching and restart on the other side of the armhole when the shoulder gets too narrow to continue. Press armhole edges, rolling seamline to WS.

11. Sew side seams: flip the lining out from the bodice. Pin bodice front to bodice back and bodice lining front to bodice lining back, RS together, matching underarm seams, notches and darts. Stitch entire side seam from bodice waistline to lining waistline in one pass, and press seam allowances open. Turn lining to WS.

12. Baste waistline edge: pin bodice to lining, WS together, at waistline edge, matching darts and side seams. Baste with a 1/2 in (1.3 cm) seam allowance.

For a uniform dress with a bodice inset panel, proceed to the next section. For a uniform dress without a bodice inset panel, skip to the Skirt section.

BODICE INSET PANEL (OPTIONAL)

There are many different ways to assemble an inset panel, and many options for fabric and lining. You could use your fashion fabric, a contrast fabric, lace, or embroidered tulle. For versatility, you could even make different insets for different moods!

For a simple, basic panel, sew the fabric Bodice Inset Panel (3) to the lining inset panel, RS together, along the three long edges, pivoting at the corners. Clip your corners, grade the seams, and turn it RS out. Press flat and finish the bottom edge as desired. Add snaps following the instructions below, and then move on to the Skirt section to finish your dress.

For the more advanced scalloped eyelash lace inset panel that we used on Gertie's green silk dress, follow these instructions:

1. Prepare the fabric: for the Bodice Inset Panel (3), cut one of lace and two of organza. For a nude illusion panel, the organza should match your skin tone. Fuse strips of 1/4-in-wide (3.2 cm) interfacing to the WS of both long side edges on one piece of organza. Press the short bottom edge on the lace and the organza pieces 1/2 in (1.3 cm) to the WS.

2. Assemble organza inset: pin the organza pieces RS together along the top edge, matching notches. Stitch. Grade the seam allowances and turn WS together. Press flat and treat the organza triangular inset as one unit.

3. Attach lace: pin lace inset panel to organza inset panel unit, RS together, along the long unsewn edges. Stitch, leaving the upper edge and short edge unsewn. Grade seam allowances and turn RS out. Press flat.

4. Sew the bottom edge: turn in the short bottom edges, WS together, to the inside of the inset panel. Edgestitch to enclose the raw edges and finish the inset. Press flat.

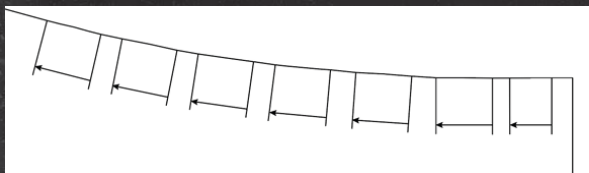
5. Attach the lace to the top organza edge: pin the lace to the organza unit along the top edge. Using a narrow zigzag stitch, topstitch from the RS following the lace pattern to secure. Alternatively, slipstitch the top edge of the organza unit to the lace from the WS by hand.

6. Sew snaps for front inset panel: using pattern markings as a guide, sew snaps by hand to bodice lining and RS of front inset panel. **NOTE:** for comfort when wearing the dress without the panel, sew the flat socket of the snap to the bodice and the stud of the snap to the inset panel.

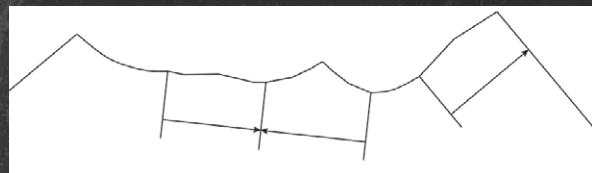
All About Pleats

Pleats are folds of fabric that add fullness to a garment. They're often seen on the waistline of a skirt but can also be used on pants, sleeves, and anywhere you want a bit of freedom and movement.

Pleats have been used on garments throughout history, but they were very popular in the 1950s and can often be seen on full skirts of the period. There are two basic types of pleats: knife pleats and box pleats. The pleats on the Charm School Uniform skirt are inverted box pleats.



KNIFE PLEATS fold to one side, as shown above in the Maria Dress. They can be equally spaced and go all the way around a skirt (like a kilt), or they can be used in pairs or groups on either side of the center line.



BOX PLEATS are made with two knife pleats that fold toward each other and meet in the middle, shown here on the Millicent Skirt. From the RS of the garment, the two pleats of an inverted box pleat will fold towards each other to meet; a regular box pleat will look like they fold away from each other (and actually meet on the WS of the garment!).

HOW TO SEW A PLEAT

- 1. Mark the pleats carefully on the WS of your fabric** (or snip into the seam allowance at the top of each pleat). For a couture touch, thread-trace the pleat marks with a long running stitch so you can see the lines on the RS of the fabric.
- 2. Working from the RS, bring the pleat lines together**, following the direction of the pleat arrow (keep your pattern pieces handy so that you can refer to the pleat arrows as you're working). Pin the pleats securely.
- 3. Baste the pleats** within the seam allowance to hold them into place.
- 4. Press or steam your pleats**, depending on the desired look.

SKIRT

1. Interface pocket bag: fuse the Skirt Pocket Interfacing (8) to the WS of each Skirt Pocket Bag (2).

2. Form pleats: working from RS, bring pleat lines together along waist edge of Skirt Front (4), following arrows and pinning in place. Baste waistline edge with a 1/2-in seam allowance to secure. Press pleats flat at waist. Repeat for pleats on Skirt Back (5).

3. Attach pocket bag: pin the skirt pocket bag to the skirt front at the pocket opening, RS together, matching circles. Stitch the pocket opening. Grade the seam allowances so the skirt front is wider and the pocket bag is narrower. Clip into curves every 1/2 in (1.3 cm).

4. Understitch pocket bag: from RS, with pocket bag opened out from the skirt front and seam allowances underneath, stitch the pocket bag 1/8 in (3 mm) from the seamline, catching seam allowances in stitching. Turn pocket bag to skirt WS and press pocket opening edge, rolling seamline slightly so it is hidden inside.

5. Attach skirt side front: pin Skirt Side Front (6) to skirt pocket bag along the lower edge and sides, RS together. Do not pin through to the skirt front. Stitch just the skirt side front to the pocket bag along the long curved edge. Press flat.

6. Baste pocket into place: pin the skirt side front to the skirt front at the waist and side seam, matching circles and notches and sandwiching the pocket bag inside. Baste using a 1/2-in (1.3 cm) seam allowance along the waist edge and side seam.

7. Attach skirt facing: pin Skirt Front Facing (9) to CF opening of skirt front, RS together, matching circles. Stitch. Grade seam allowances so the skirt front is wider and the facing is narrower.

8. Understitch skirt facing: from RS, with facing opened out from skirt and seam allowances underneath, stitch the facing 1/8 in (3 mm) from the seamline, catching seam allowances in stitching. Turn facing to skirt WS and press CF edge, rolling seamline slightly so it is hidden inside the skirt. Baste facing to skirt at waistline with a 1/2-in (1.3 cm) seam allowance.



9. Sew side seams: pin the skirt front to the skirt back at the side seams, RS together, matching notches. Stitch. Press the seam allowances toward the back.

For a separate skirt, skip to the Waistband for Separate Skirt section. Otherwise, proceed to the next step.

WAISTBAND FOR UNIFORM OR DRESS

1. Prepare waistband: on the uninterfaced Waistband (10), press the long edge with three notches 5/8 in (1.5 cm) to the WS. On the interfaced waistband, pin the long edge with five notches to the bodice unit, RS together, matching notches to the side seams, CF, and CB. Pin RS of uninterfaced waistband to WS of bodice unit, matching circles and the five notches. Pin waistbands RS together at each short end. You are sandwiching the bodice between the waistbands, and

the CF of the bodice aligns to the notch (at the sew line) not the short edge of the waistband. **NOTE:** the long waistband edge with five notches attaches to the bodice and the edge with three notches attaches to the skirt.

2. Sew waistband to bodice: beginning at the circle on one short edge and ending with the circle on the opposite short edge, stitch the waistband to the bodice. At each short edge, stitch only the waistbands together, pivoting at the corners and being careful not to catch the bodice in your stitches. Between the notches, stitch through all layers. Clip the corners. Grade the seam allowances so the interfaced waistband is the widest, followed by the bodice, the bodice lining, and then the uninterfaced waistband, which will be the narrowest.

3. Attach waistband to skirt: pin the interfaced waistband's free edge to the skirt unit, RS together, matching notches to side seams and pleats. Leave the uninterfaced inner waistband free. Stitch. Grade seam allowances so the waistband is wider and the skirt is narrower. Clip into the curved seam allowance every $\frac{1}{2}$ in (1.3 cm). Press seam allowances toward the waistband.

4. Finish waistband: pin the pressed edge of the uninterfaced inner waistband to the skirt so it just covers the waistline seam. Stitch in the ditch from the RS or slipstitch by hand to secure.

Proceed to the Finishing section.

WAISTBAND FOR SEPARATE SKIRT

1. Make belt loops: finish both long edges of Belt Loop (11) strip. Press each finished edge under $\frac{1}{4}$ in (6 mm). Topstitch both long edges at $\frac{1}{8}$ in (3 mm). Cut into five belt loops of equal length.

2. Baste belt loops to waistband: pin WS of belt loops to RS of interfaced Waistband (10) into place at each of the five notches, aligning raw edges. Baste with a $\frac{1}{2}$ in (1.3 cm) seam allowance at the upper and lower edge of each belt loop.

3. Assemble waistband: on the uninterfaced waistband, press the long edge with three notches $\frac{5}{8}$ in (1.5 cm) to the WS. Along the edge with five notches, pin the interfaced waistband to the uninterfaced waistband, RS together, matching notches and sandwiching the belt loops inside. Stitch each short end and the long pinned edge, pivoting at corners. Clip corners and grade seam allowances so the interfaced waistband is wider and the uninterfaced waistband is narrower. Turn the waistband RS out, making sure corners are crisp by using a point turner, knitting needle, or pin to gently poke them out. Press flat.

4. Attach waistband to skirt: pin the interfaced waistband's free edge to the skirt unit, RS together, matching notches to side seams and pleats. Leave the uninterfaced inner waistband free. Stitch. Grade seam allowances so the waistband is wider and the skirt is narrower. Clip into the curved seam allowance every $\frac{1}{2}$ in (1.3 cm). Press seam allowances toward the waistband.

5. Finish waistband: pin the pressed edge of the uninterfaced inner waistband so it just covers the waistline seam. Stitch in the ditch from the RS or slipstitch by hand to secure.

Proceed to the next section.

FINISHING

1. Allow to hang for 24 hours before hemming: try on the dress or skirt, wearing the shoes you plan to wear with it. Even the hem by measuring up from the floor and marking the desired hemline plus $\frac{5}{8}$ in (1.5 cm) hem allowance all the way around the skirt. Trim along the marked line.

2. Hem the dress or skirt: finish raw edge of hem by desired method. Fold and press the edge under $\frac{5}{8}$ in (1.5 cm). Topstitch $\frac{1}{2}$ in (1.3 cm) from fold. Press hem flat.

3. Sew buttons and buttonholes: using pattern markings as a placement guide, sew horizontal buttonholes on right half of dress or skirt front (as worn). Following pattern markings for buttonholes, sew buttons by hand or machine to left half of dress or skirt front (as worn).

Enjoy your smart new Charm School Uniform!

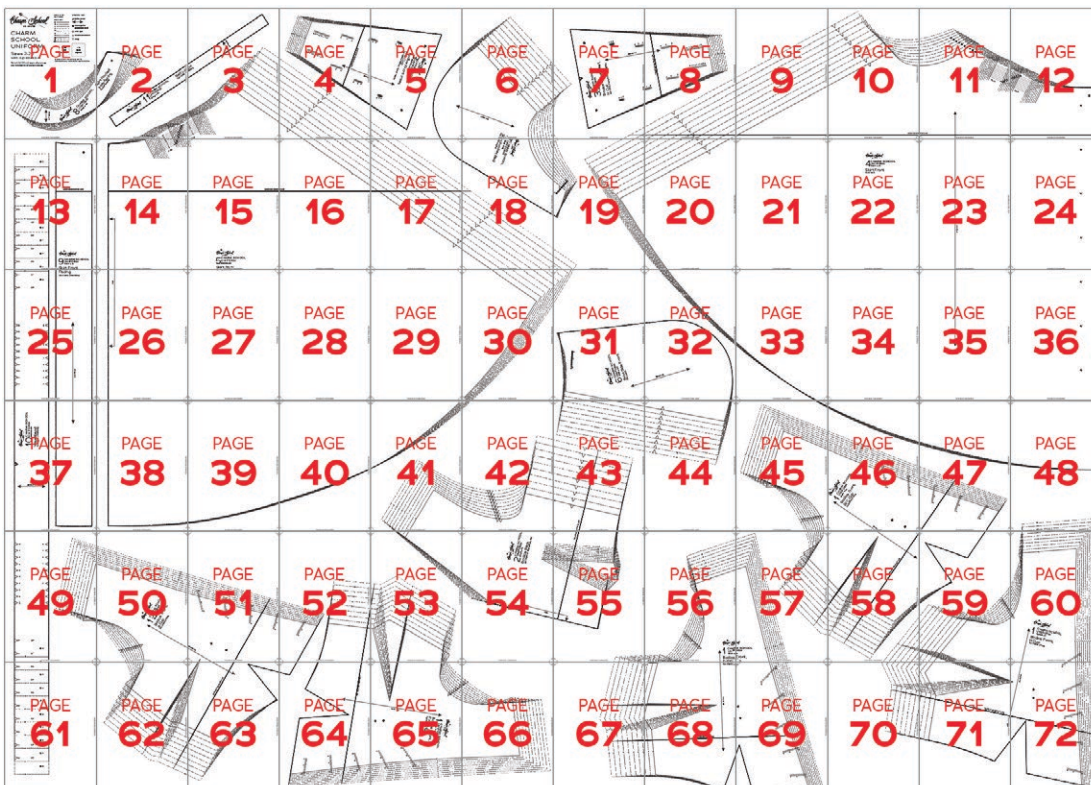
PATTERN PIECE LOCATION GUIDE

Here is a list to help you locate the pattern pieces on the letter-size tiled pages and A0 pattern sheets. The tiled pieces and A0 sheets are included as separate pdf files as part of this digital pattern.

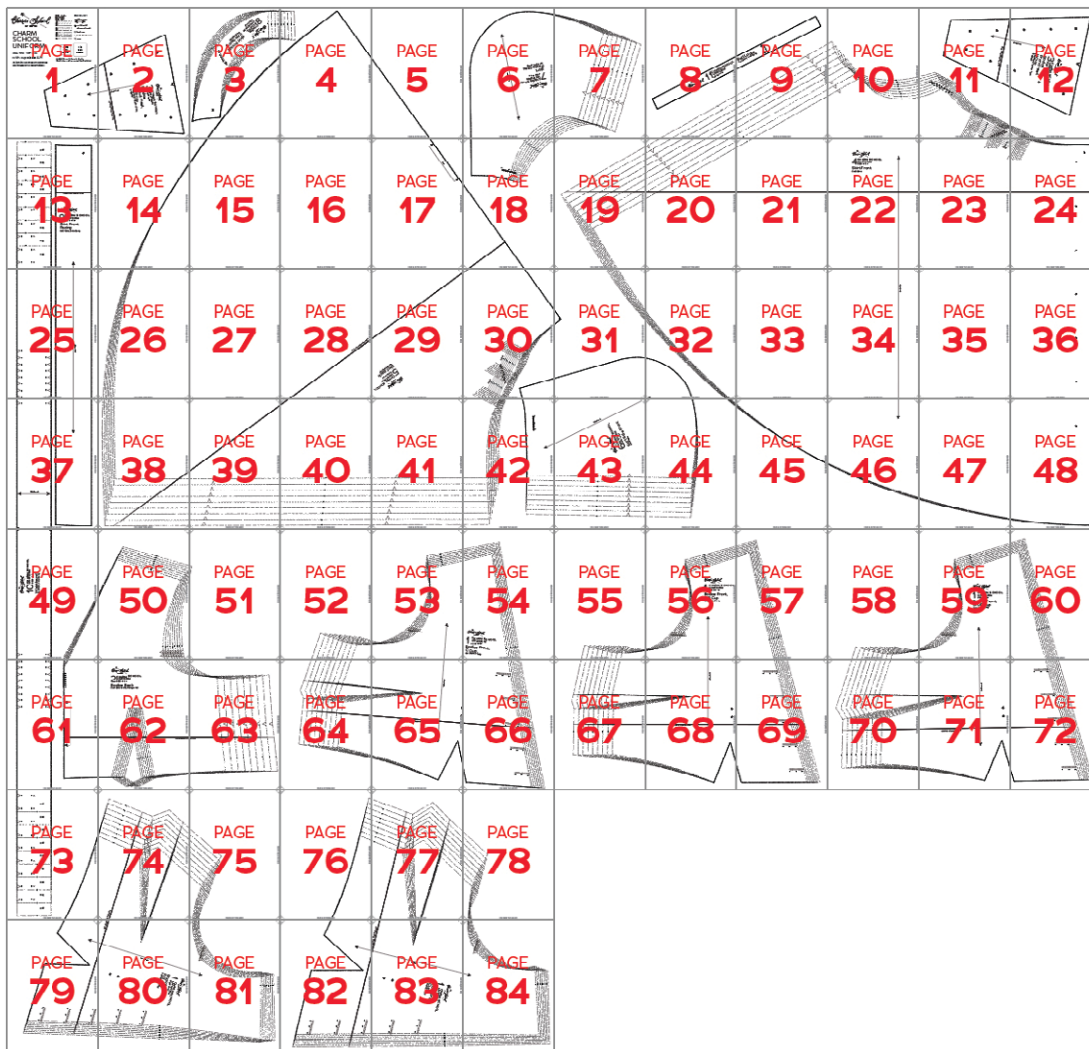
SIZES 2-20			SIZES 18-34				
PC#	Piece Name	Tiled	A0	PC#	Piece Name	Tiled	A0
1	Bodice Front, A Cup	49-52, 62-64	4	1	Bodice Front, A/B Cup	55-57, 67-69	3
1	Bodice Front, B/C Cup	45-47, 57-59	3	1	Bodice Front, C Cup	52-54, 64-66	4
1	Bodice Front, D/DD Cup	55-57, 67-69	4	1	Bodice Front, D/DD Cup	58-60, 70-72	4
1	Bodice Front, F/G Cup	52-53, 64-66	4	1	Bodice Front, F/G Cup	73-75, 79-81	4
1	Bodice Front, H Cup	48, 58-60, 70-72	4	1	Bodice Front, H Cup	76-78, 82-84	4
2	Bodice Back	41-43, 53-55	3	2	Bodice Back	49-51, 61-63	3
3	Bodice Front Inset, A-G Cup	4-5	3	3	Bodice Front Inset, A-G Cup	1-2	1
3	Bodice Front Inset, H Cup	7-8	3	3	Bodice Front Inset, H Cup	11-12	3
4	Skirt Front	7-12, 19-24, 32-36, 45-48	1-2	4	Skirt Front	8-12, 19-24, 31-36, 44-48	2-3
5	Skirt Back	3-5, 14-19, 26-31, 38-42	2-3	5	Skirt Back	3-5, 14-18, 26-31, 38-42	1-2
6	Skirt Side Front	31-32, 43-44	3	6	Skirt Side Front	30-32, 42-44	1
7	Skirt Pocket Bag	5-7, 17-19	1	7	Skirt Pocket Bag	6-7, 18	2
8	Skirt Pocket Interfacing	1-2	2	8	Skirt Pocket Interfacing	3-4	2
9	Skirt Front Facing	13, 25, 37	2	9	Skirt Front Facing	13, 25, 37	3
10	Waistband	13, 25, 37, 49, 61	1-2	10	Waistband	13, 25, 37, 49, 61, 73	2-3
11	Belt Loops	2-3	1	11	Belt Loops	8-9	2

TILING MAPS

SIZES 2-20



SIZES 18-34



HOW TO USE THIS PATTERN

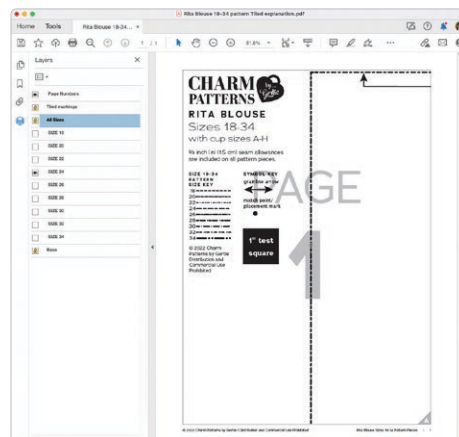
The pattern pieces are tiled so you can print them on Letter (8½ in x 11 in) or A4 size paper. You can also send the A0 pattern sheet PDF to a local or online printer (like ThePlottedPattern.com) to print on large sheets (36 in x 48 in for U.S. or A0 for international).

This pattern includes size layers. To get the best results, open either the Tiled or A0 pattern pieces PDF in [Acrobat Reader](#).

Open the Layers Palette (View>Show/Hide>Navigation Panes>Layers) and hide all of the layer(s) except for the ones you want to print by clicking on the eye icon.

The All Sizes and Tiled Markings layers have general pattern information and will always print.

You may choose to turn off the Page Numbers layer. The page numbers will still appear at the bottom of each page in the footer.



WORKING WITH THE TILED PIECES

Go to File>Print and change the page range to the pages you need for the pieces you've chosen (see Pattern Pieces Printing Index). Make sure the Page Sizing settings to 100% or Actual Size. Test after printing by measuring the 1 inch or 2 cm test box on the first page of the pattern pieces.

Cut apart any pattern pieces that share a page, then fold back or cut off the page margins on each page as marked.

Match the letters in the gray corner diamonds. Tape the pages together, butting up the folded or cut page edges with the gray margin lines.

WELCOME TO



Class is in session!

Charm School is a private and exclusive dressmaking academy where your fantasies are stitched into reality.

Enjoy these benefits as part of your Charm School enrollment. For more access, upgrade now to a higher tier [on Patreon](#).

As you explore the hallowed halls, remember our four tenets: **Education, Community, Glamour, and Mastery**. And never forget the motto that generations before us have pledged: *Setire Phantasia*. **Feel the fantasy!**

STUDENT RESOURCES

- Easily find your homework and patterns using the Patreon archive visual index on our [Patreon page](#).
 - Learn which patterns can combine together from our [mix-and-match spreadsheet](#).
 - Shop all Charm sewing patterns and accessories in the [Charm shop](#).
- On Instagram:** Stay in the loop and get inspired by Gertie and other students.
- On YouTube:** Learn beginner and advanced sewing skills and techniques with comprehensive tutorials.



2024 PATREON TIER COMPARISONS



	Sewing Circle	Glamour Circle	Princess Circle	Inner Circle
2024 Price	\$9	\$12	\$20	\$25
Monthly sewing pattern	✓	✓	✓	✓
Monthly pattern video	✓	✓	✓	✓
Monthly live event	✓	✓	✓	✓
Monthly sneak peek	✓	✓	✓	✓
Discord channel	✓	✓	✓	✓
One Charm PDF gift per year (Gertie's choice)	✓	✓	✓	✓
First access to Charm merchandise	✓	✓	✓	✓
<i>Vintage by Gertie</i> quarterly magazine	x	✓	✓	✓
Monthly bonus content: pattern or digital download	x	✓	✓	✓
40% off one print or PDF Charm Pattern (3x per year)	x	x	✓	✓
Annual physical gift	x	x	✓	✓
Charm Pattern sneak peaks	x	x	✓	✓
100% off all new Charm Patterns when they are released (in PDF)	x	x	x	✓
PDF Charm sloper of the Charm Bodice Block (not released to the public)	x	x	x	✓
5% off and first dibs on signing up for Gertie's 2024 in-person Charm Sewing Retreats	x	x	x	✓
Regular exclusive live event as our Inner Circle board of advisors	x	x	x	✓
Names listed as Inner Circle patrons in <i>Vintage by Gertie</i> magazine	x	x	x	✓
20% off Charm merchandise, 2x per year, plus access to past annual gifts (according to availability)	x	x	x	✓

NOW AVAILABLE FROM CHARM PATTERNS



You will also find these free PDF patterns in our shop:



Read all of Gretchen Hirsch's books to advance your sewing skills!
Available to purchase or order from your favorite bookseller.

