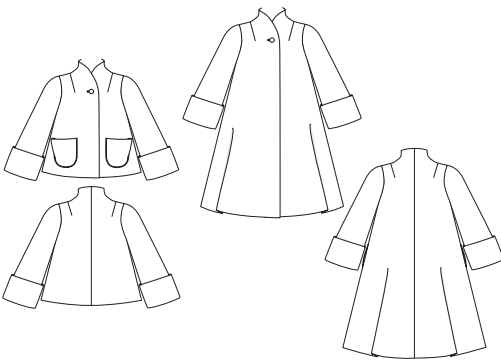




# Swing Coat

A PATREON EXCLUSIVE PATTERN





The Swing Coat has a luxe swing shape and dramatic cuffed sleeves, perfect for throwing on over your vintage finery! The funnel-shaped neckline makes it quick and easy to sew, so this coat comes together in a jiffy. Make it full length with in-seam pockets (extra points for making a dress to match your lining) or short with cute patch pockets. This project can suit a variety of climates and seasons depending on your fabric choice: make it in cotton for a swiny beach jacket or in snuggly wool for a winter topper (read my tips below on making it even warmer with interlining). Don't forget to watch the video to see how it comes together!

*soso, Gertie*

## SIZE CHART

The Swing Coat is sized in women's US 2–20, with separate cup size groupings for A–C and D–H.

	2	4	6	8	10	12	14	16	18	20
High Bust	29 in 73.7 cm	31 in 78.7 cm	33 in 83.8 cm	35 in 88.9 cm	37 in 94 cm	39 in 99 cm	41 in 104.1 cm	43 in 109.2 cm	45 in 114.3 cm	47 in 119.4 cm
Bust A cup	30.5 in 77.5 cm	32.5 in 82.5 cm	34.5 in 87.6 cm	36.5 in 92.7 cm	38.5 in 97.8 cm	40.5 in 102.9 cm	42.5 in 107.9 cm	44.5 in 113 cm	46.5 in 118.1 cm	48.5 in 123.1 cm
Bust B/C cup	31 in 78.7 cm	33 in 83.8 cm	35 in 88.9 cm	37 in 94 cm	39 in 99 cm	41 in 104.1 cm	43 in 109.2 cm	45 in 114.3 cm	47 in 119.4 cm	49 in 124.5 cm
Bust D/DD cup	32 in 81.3 cm	34 in 86.4 cm	36 in 91.4 cm	38 in 96.5 cm	40 in 101.6 cm	42 in 106.7 cm	44 in 111.8 cm	46 in 116.8 cm	48 in 121.9 cm	50 in 127 cm
Bust F/G cup	33 in 83.8 cm	35 in 88.9 cm	37 in 94 cm	39 in 99 cm	41 in 104.1 cm	43 in 109.2 cm	45 in 114.3 cm	47 in 119.4 cm	49 in 124.5 cm	51 in 129.5 cm
Bust H cup	34 in 86.4 cm	36 in 91.4 cm	38 in 96.5 cm	40 in 101.6 cm	42 in 106.7 cm	44 in 111.8 cm	46 in 116.8 cm	48 in 121.9 cm	50 in 127 cm	52 in 132.1 cm
Waist	24 in 61 cm	26 in 66 cm	28 in 71.1 cm	30 in 76.2 cm	32 in 81.3 cm	34 in 86.4 cm	36 in 91.4 cm	38 in 96.5 cm	40 in 101.6 cm	42 in 106.7 cm
Hip	36 in 91.4 cm	38 in 96.5 cm	40 in 101.6 cm	42 in 106.7 cm	44 in 111.8 cm	46 in 116.8 cm	48 in 121.9 cm	50 in 127 cm	52 in 132.1 cm	54 in 137.2 cm

## FINISHED MEASUREMENTS

**Fit notes:** The Swing Coat has a generous trapeze fit with 5 to 8½ inches (in) of ease in the bust, 18 to 22 in through the waist, and 18 to 24 in around the hips. The long coat is midcalf-length and the short coat is hip-length (as shown on a 5-foot 6-inch model). Hem sweep on the long coat in size 6 is 79¾ in. Note: waist and hip measurements shown below are for A–C cup sizes. In a trapeze shape like this, the additional ease in the bust in the D–H cup sizes translates to additional ease in the waist and hips as well. The larger cup sizes are on the upper end of the ease ranges above.

Size	2	4	6	8	10	12	14	16	18	20
Bust A–C	38 in 96.5 cm	40 in 101.6 cm	42 in 106.7 cm	44 in 111.8 cm	46 in 116.8 cm	48 in 121.9 cm	50 in 127 cm	52 in 132.1 cm	54 in 137.2 cm	56 in 142.2 cm
Bust D–H	39 in 99 cm	41 in 104.1 cm	43 in 109.2 cm	45 in 114.3 cm	47 in 119.4 cm	49 in 124.5 cm	51 in 129.5 cm	53 in 134.6 cm	55 in 139.7 cm	57 in 144.8 cm
Waist	42 in 106.7 cm	44 in 111.8 cm	46 in 116.8 cm	48 in 121.9 cm	50 in 127 cm	52 in 132.1 cm	54 in 137.2 cm	56 in 142.2 cm	58 in 147.3 cm	60 in 152.4 cm
Hips	53.75 in 136.5 cm	55.75 in 141.6 cm	57.75 in 146.7 cm	59.75 in 151.8 cm	61.75 in 156.8 cm	63.75 in 161.9 cm	65.75 in 167 cm	67.75 in 172.1 cm	69.75 in 177.2 cm	71.75 in 182.2 cm

## MATERIALS & NOTIONS

- Fabric for coat
- Fabric for lining
- Fusible interfacing
- One 1-in button or snap
- Thread to match your fabric

## FABRIC NOTES

**For cold-weather outerwear:** Medium- to heavy-weight wool and wool blend coating and suiting fabrics, melton wool, boiled wool, bouclé, wool flannel, tweed, or double crepe.

**For warmer-weather versions:** medium-weight silks and cottons like sateen, satin, twill, brocade, dupioni, denim, or corduroy.

**For rainwear:** laminated cottons and waterproof rainwear fabrics.

**For the lining:** light- to medium-weight silks and lining fabrics.

**Interfacing:** weft insertion or light- to medium-weight woven fusible interfacing.

## RESOURCES

Here are some of the fabrics and supplies I used for the samples and in the video tutorial. There are lots of places to purchase the fabrics and notions needed so this is solely a guide you can use as a reference.

[Pro-Weft Supreme Light Fusible Interfacing](#)

Harris Tweed (can be purchased in many fabric shops, but [this particular online store](#) has a lot of options).

[Tailoring: The Classic Guide to Sewing the Perfect Jacket](#)

## Interlining for Warmth

In this month's video, I talk a bit about adding warmth to your coat for cold climates. Here are the linings and interfacings I mention:

[Sunback Lining](#)

[Quilted Lining](#)

[Lambswool interfacing](#)

[Thinsulate](#)

## REQUIRED YARDAGE & CUTTING LAYOUTS

**Note:** All pattern pieces are shown in a “without nap” layout. You may need additional yardage for directional prints, stripes, plaids, and other prints that need to be matched across seamlines.

### 1. Coat Front

Cut 2 fabric.

### 2. Coat Back

Cut 2 fabric.

### 3. Front Facing

Cut 2 fabric, 2 interfacing.

### 4. Back Neck Facing

Cut 1 fabric on fold, 1 interfacing on fold.

### 5. Coat Front Lining

Cut 2 lining.

### 6. Coat Back Lining

Cut 2 lining.

### 7. Bound Buttonhole Patch

Cut 1 fabric.

### 8. Sleeve

Cut 2 fabric.

### 9. Sleeve Cuff

Cut 2 fabric, 2 interfacing.

### 10. Sleeve Lining

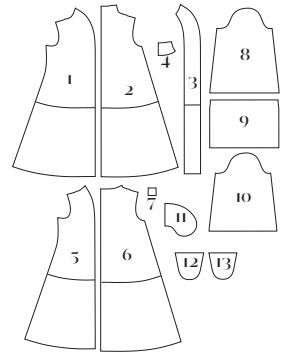
Cut 2 lining.

### 11. Inseam Pocket

Cut 4 lining (for long version only).

### 12. Patch Pocket

Cut 2 fabric (for short version only).



### 13. Patch Pocket Lining

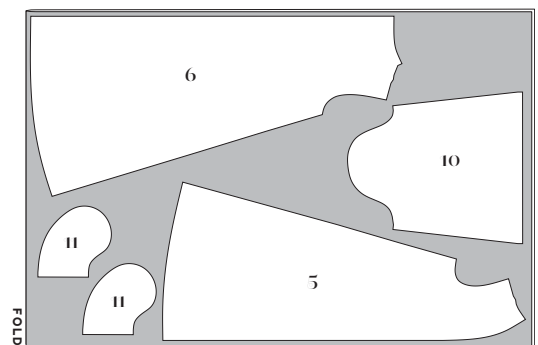
Cut 2 lining (for short version only).

## LONG VERSION

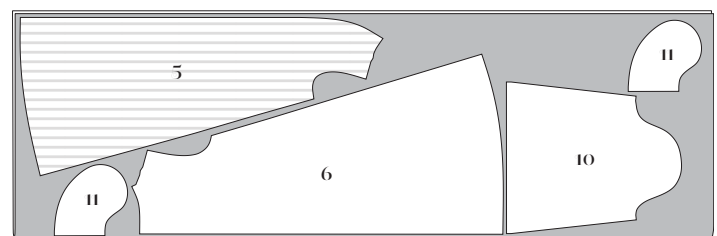
### Lining (5, 6, 10, 11)

	Sizes 2-10	Sizes 12-20
45 in	3 <sup>7</sup> / <sub>8</sub> yds 3.5 m	4 <sup>1</sup> / <sub>2</sub> 4.2 m
60 in	2 <sup>5</sup> / <sub>8</sub> yds 2.4 m	3 <sup>1</sup> / <sub>4</sub> yds 2.9 m

Pieces at right are shown on a crosswise layout. The full width of the fabric is opened out and a fold is made perpendicular to the selvages.



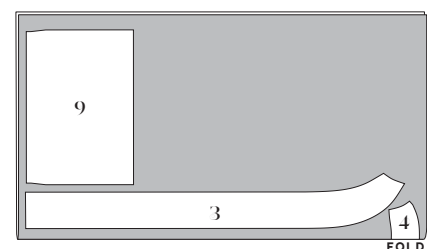
45 in, all sizes



60 in, all sizes

### Interfacing (3, 4, 9)

	Sizes 2-10	Sizes 12-20
60 in	1 <sup>5</sup> / <sub>8</sub> yd 1.5 m	1 <sup>3</sup> / <sub>4</sub> yds 1.6 m

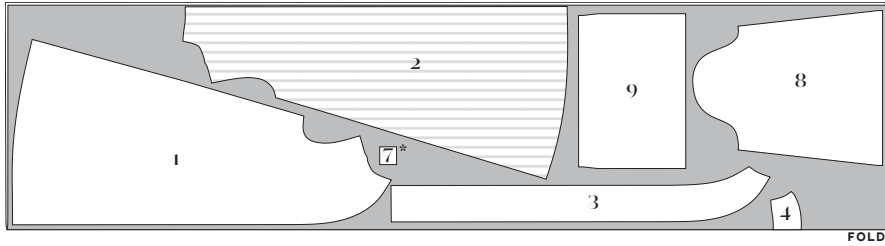


## Main Fabric

(1, 2, 3, 4, 7, 8, 9)

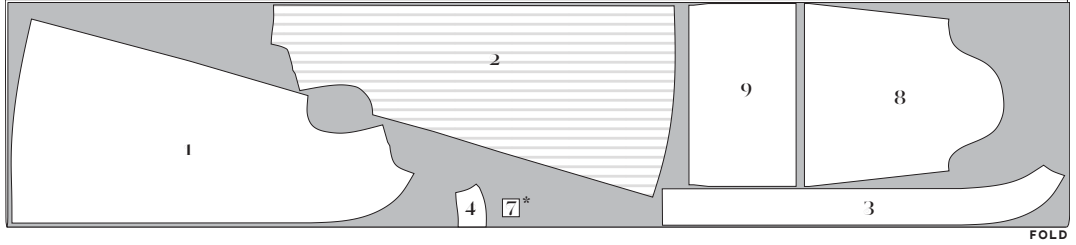
**Sizes 2-10    Sizes 12-20**

45 in	4¾ yds 4.3 m	6 yds 5.5 m
60 in	3¾ yds 3.1 m	4 yds 3.7 m



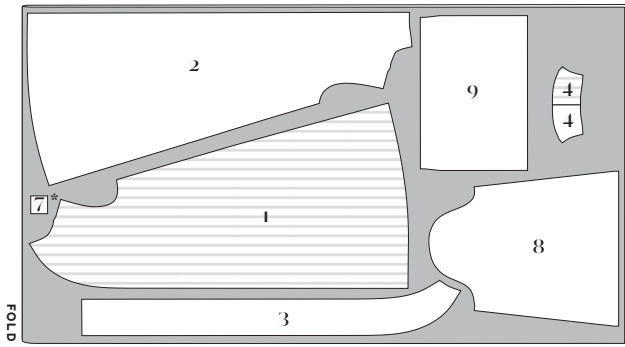
60 in, sizes 2-10

\*Cut this piece from one layer only

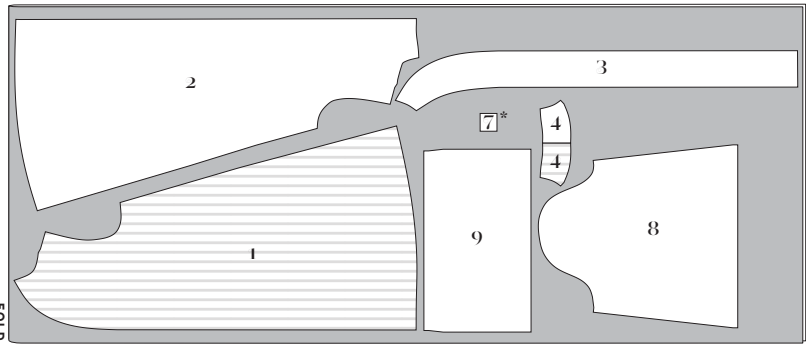


60 in, sizes 12-20

Pieces below are shown on a crosswise layout. The full width of the fabric is opened out and a fold is made perpendicular to the selvages.



45 in, sizes 2-10



45 in, sizes 12-20

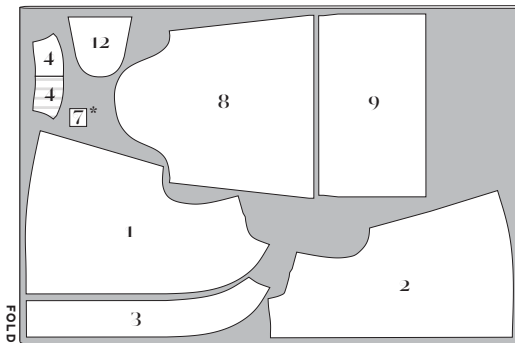
## SHORT VERSION

### Main Fabric

(1, 2, 3, 4, 7, 8, 9, 12)

**Sizes 2-10    Sizes 12-20**

45 in	3 yds 2.7 m	3¾ yds 3.4 m
60 in	2⅞ yds 2 m	3¼ yds 3 m



45 in, sizes 12-20

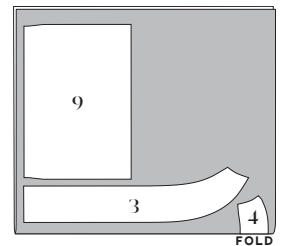
Pieces at left are shown on a crosswise layout. The full width of the fabric is opened out and a fold is made perpendicular to the selvages.

### Interfacing

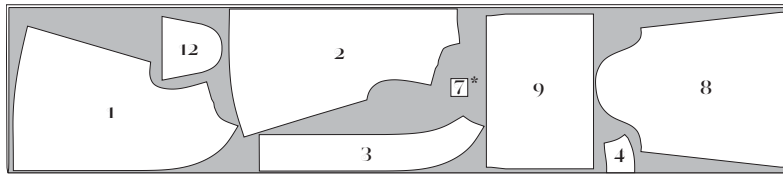
(3, 4, 9)

**Sizes 2-10    Sizes 12-20**

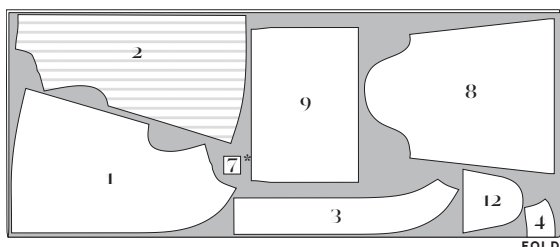
60 in	1 yd .9 m	1⅞ yds 1 m
-------	--------------	---------------



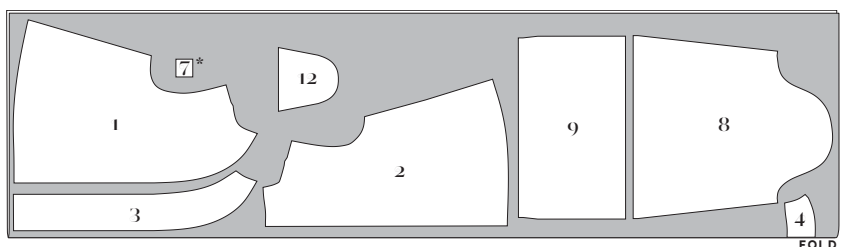
\*Cut this piece from one layer only



45 in, sizes 2-10



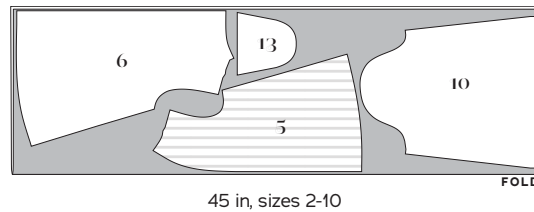
60 in, sizes 2-10



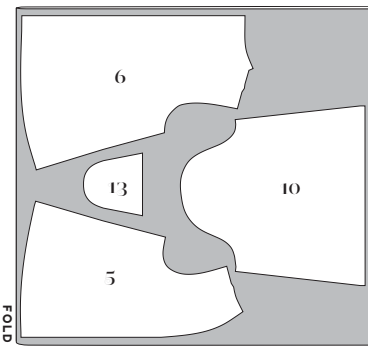
60 in, sizes 12-20

## Lining (5, 6, 10, 13)

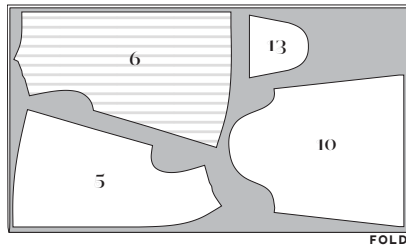
	Sizes 2-10	Sizes 12-20
45 in	2 $\frac{1}{8}$ yds 2 m	2 $\frac{1}{2}$ yds 2.3 m
60 in	1 $\frac{5}{8}$ yds 1.5 m	1 $\frac{7}{8}$ yds 1.7 m



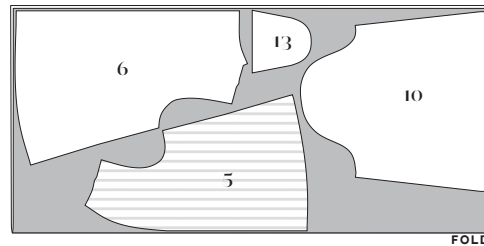
45 in, sizes 2-10



45 in, sizes 12-20



60 in, sizes 2-10



60 in, sizes 12-20

Pieces at left are shown on a crosswise layout. The full width of the fabric is opened out and a fold is made perpendicular to the selvages.

## SEWING INSTRUCTIONS

### BEFORE SEWING

**Transferring marks:** use dressmaker's tracing paper and a tracing wheel (or tailor's tacks) to transfer all pattern markings to the wrong side (WS) of your fabric. Mark pattern notches by snipping into the seam allowance with the tip of your scissors.

**Interfacing:** fuse interfacing to indicated pieces prior to sewing.

### SEWING INSTRUCTIONS

**NOTE:**  $\frac{5}{8}$ -inch (in) (1.5 cm) seam allowances are included on all pattern pieces, except where otherwise noted.

- 1. Make bound buttonhole (optional)** on right Coat Front (1). See instructions on page 6. If using a machine buttonhole or snap, skip this step.
- 2. Sew shoulder darts on Coat Front (1) and Coat Back (2)** by bringing dart legs right sides (RS) together and pinning along marked lines. Stitch along marked lines from dart base to dart point. Backstitch at the beginning but not at the end, leaving a few inches of thread at the point. Cut darts open and press flat on a tailor's ham.
- 3. Sew coat back seam:** pin Coat Backs RS together. Stitch and press seam allowances open.

**4. Sew patch pockets (short coat only):** pin Patch Pocket Lining (13) to Patch Pocket (12), RS together. Stitch, leaving a 2-in (5-cm) opening. Trim seam allowances and turn pocket RS out through opening. Stitch opening closed by hand using a slipstitch. Pin pockets on coat at placement circles. Edgestitch pocket to coat, leaving straight upper edge free.

**5. Sew inseam pockets (long coat only):** stitch Inseam Pockets (11) to coat front and back at side seams, matching notches and using a  $\frac{3}{8}$ -in (1-cm) seam allowance. Press pockets toward seam allowances.

**6. Sew coat shoulder and side seams:** stitch coat fronts to coat back at shoulder seams and side seams, RS together, matching notches and darts. Press seam allowances open. Note: If using inseam pockets, when sewing sides seams pivot at top and bottom of pockets and stitch around pocket edges. Clip into pocket pivot points on back seam allowances, and press pockets toward coat front. Press seam allowances open above and below pockets.

**7. Construct sleeves and cuff:** stitch Sleeve (8) underarm seams, RS together. Press seam allowances open. Stitch Sleeve Cuff (9) seams, RS together. Press seam allowances open. Place sleeve inside cuff, RS together, matching notches and seams. Stitch around the cuff. Trim seam allowances and press open using a seam roll.

**8. Set in sleeves:** with a long stitch (4 mm to 5 mm), sew two lines of gathering stitches along the sleeve cap between notches. Sew the first using a 1/2-in-wide (1.3-cm) seam allowance and the second with a 1/4-in wide (6-mm) seam allowance. Pull up bobbin threads to ease the sleeve cap. Distribute fullness evenly to avoid any visible gathers or tucks on seamline. Pin sleeve to armhole, RS together, matching notches and underarm seam. Stitch. Trim seam allowances to 1/4 in around lower curve of armhole, between sets of notches.

**9. Construct facing unit:** stitch Back Neck Facing (4) to Front Facings (3) at shoulder seams. Press seam allowances open.

**10. Sew facing to coat:** pin facing unit to coat front edges and neckline, matching seams and notches. Stitch. Grade seam allowances so that the coat's is the widest and the facing's is narrower. Understitch facing from RS, with the facings opened out from the coat and the seam allowances underneath the facing, stitching 1/8 in (3 mm) from the seamline, catching the seam allowances.

**11. Make bound buttonhole opening in facing (optional):** if you made a bound buttonhole in step 1, make an opening in the facing for the button to pass through. There are multiple methods for this, but the simplest way is to make a neat, straight cut through the facing that is long enough for the button to pass through. Turn the raw edges under as much as possible and hand stitch in place around the outer edge of the bound buttonhole, WS together.

**12. Construct lining:** stitch darts in Coat Front Lining (5) and Coat Back Lining (6), as for outer coat. Instead of cutting darts open, press toward center front/back. Stitch lining back pieces together at center back, then stitch again on marked pleat lines. Press pleat to one side. Staystitch around back neckline. Sew sleeves as for outer coat (omitting cuffs), then set into coat lining as in step 8. Trim sleeve seam allowances as for outer coat.

**13. Sew lining to facings:** open out facings from coat and pin lining to facings, RS together, matching notches and seams. Stitch. Trim seam allowances down to 1/4 in (6 mm), holding scissors at an angle to grade seam allowances slightly. Press seam allowances toward lining. Turn lining to inside of coat, WS together.

**14. Sew sleeve linings to cuffs:** be sure to watch the video on this part, as it really helps to see it in action! Insert lining sleeve into coat sleeve, WS together. Working between the coat and the lining, pin the lining and cuff RS together at underarm seams, pull both sleeves WS out, pin the lining and cuff hems RS together, making sure they are not twisted. Stitch around the cuff. Pull sleeve lining to inside of coat and turn out cuff to wear.

**15. Secure facings at shoulders (optional):** for softer fabrics, you may wish to secure the facings to the coat by stitching in the ditch at the shoulder seams.

**16. Hem coat and lining:** turn up coat hem 1 in (2.5 cm) to WS and press. Hem by hand, using a slipstitch or catchstitch. Turn up lining hem 1 1/2 in (3.8 cm) to WS and press, tapering to 1 in on coat front facing hem. Pin lining hem to coat hem, tapering up from facing and pinning lining folded hem 1/2 in (1.3 cm) above coat hem. Slipstitch lining hem in place.

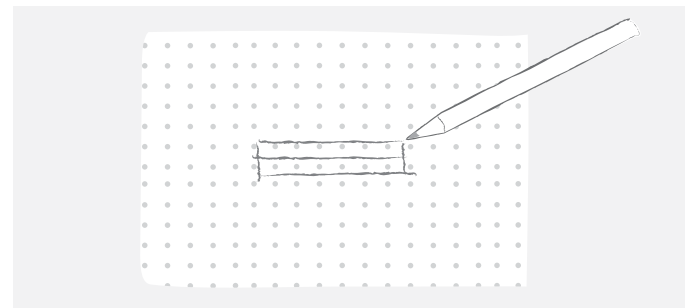
**17. Sew closure:** if you made a bound buttonhole for your coat, you only need to sew a button to the left coat front, at the button marking. Otherwise, make a machine buttonhole on the right coat front (following your machine's instructions) and sew a button to the left coat front. Alternatively, you may sew snaps to the coat at the button markings.

*Enjoy your fabulous new Swing Coat!*

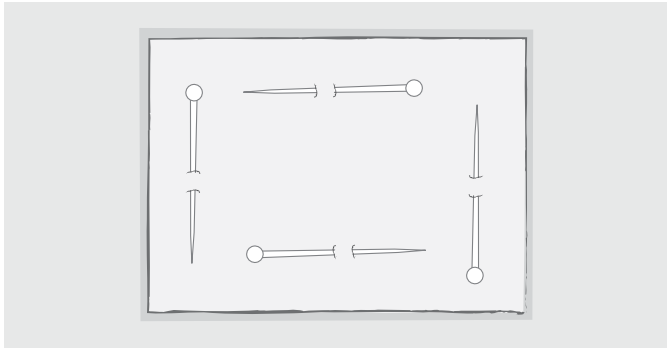
## BOUND BUTTONHOLE

If this is your first time making a bound buttonhole, I recommend watching my YouTube video on making a cropped jacket, which outlines the steps comprehensively.

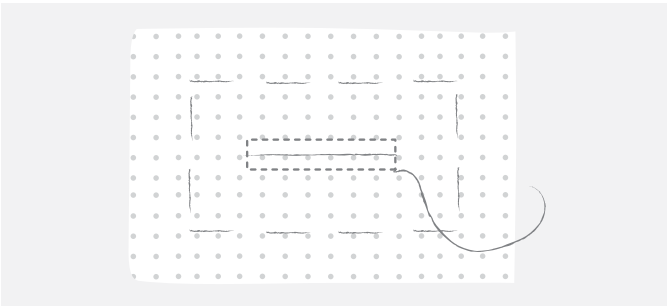
**1. Fuse square of interfacing** to WS of right coat front, applying the interfacing over the buttonhole mark. The square should be around 3 in (7.6 cm) square, enough to generously cover the buttonhole area. Re-mark buttonhole placement on the interfacing, using a narrow pen marker or chalk liner.



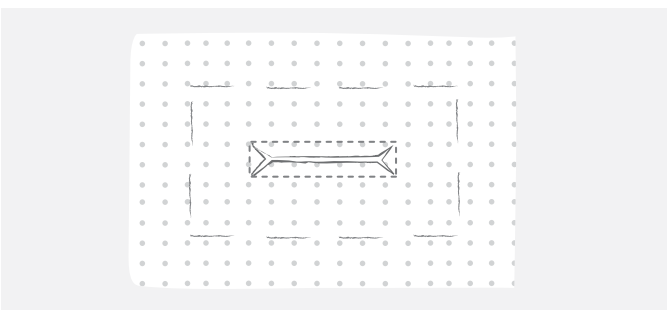
**2. Secure patch to garment:** place fabric Bound Buttonhole Patch (7) on coat right front, RS together, centering patch over buttonhole marks. Pin patch in place, and baste by hand if desired.



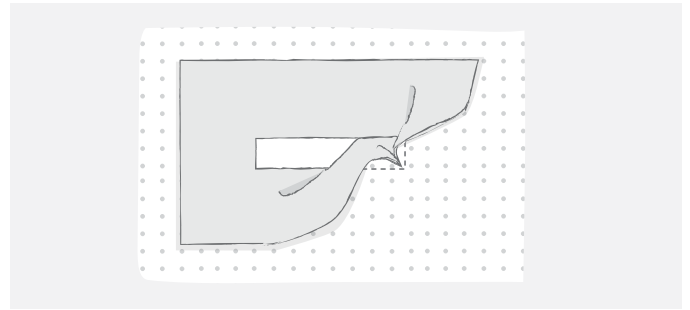
**3. Stitch buttonhole:** from the WS of coat, stitch around outer rectangle of buttonhole marking. Using a short stitch length (1.5 mm), start in the middle of one long side. When stitching the short ends of the rectangle, count the stitches so that each side is the same. Finish by overlapping stitches where you started (do not backstitch). A clear presser foot can be very helpful for this step so you can see the markings as easily as possible.



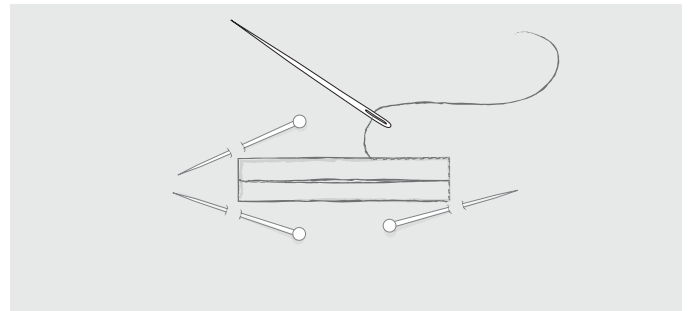
**4. Cut buttonhole:** using small sharp scissors, such as tailor's points, cut into the buttonhole 1/4 in (6 mm) from each short end, then cut into each corner diagonally and as close as possible to the stitching without cutting through it.



**5. Turn patch to WS:** remove the basting stitches and turn patch to WS of coat, slipping it through the cut opening.

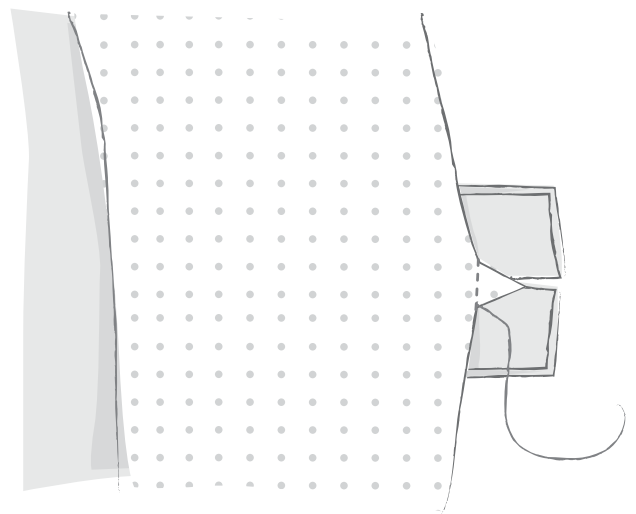


**6. Form buttonhole "lips":** working from RS, fold and arrange the patch into two lips and pin in place at each corner of the buttonhole. Steam lightly to set. Baste lips closed temporarily, if desired.



**7. Secure lips by hand:** thread a hand sewing needle with thread to match the fabric, and stitch in the ditch around the outer edges of the rectangle using a pickstitch. Alternatively, this step can be done by machine, stitching in the ditch with a short stitch.

**8. Secure buttonhole underside by machine:** from the RS, fold the Coat Front back to expose the triangles at each end of the buttonhole. Machine stitch across the patch, catching the triangles, as close to the bodice fold as possible. Use short stitches and do not backstitch.



# PATTERN PIECE LOCATION GUIDE

Here is a list to help you locate the pattern pieces on the letter-size tiled pages and A0 pattern sheets.

The tiled pieces and A0 sheets are included as separate pdf files as part of this digital pattern.

For short version, only print the pages in yellow. Print the following page ranges for each size:

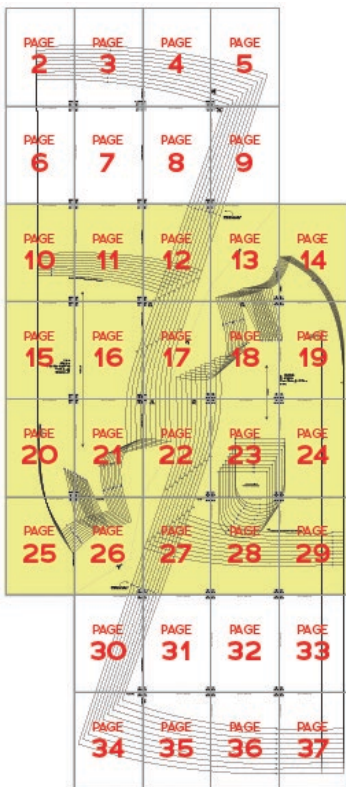
Short version, sizes A-C: 1, 10-29, 82-105, 116-143

Short version sizes D-H: 1, 48-64, 82-105, 116-143

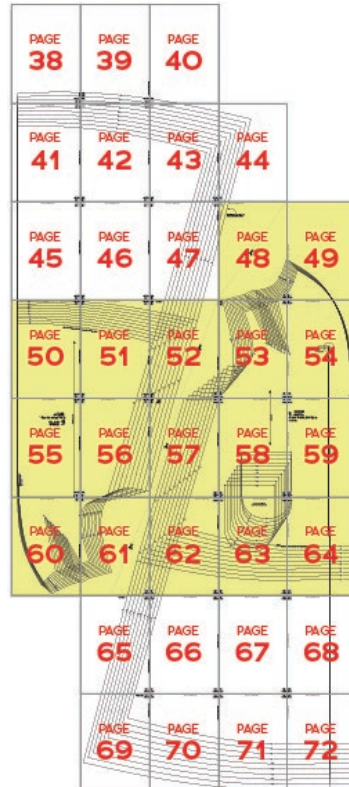
Long version sizes A-C: 1-37, 73-143

Long version sizes D-H: 1, 38-143

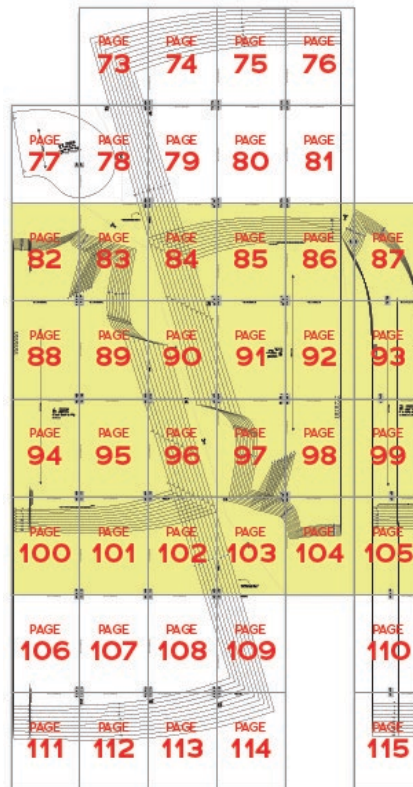
PC#	Piece Name	Tiled	A0	PC#	Piece Name	Tiled	A0
1	Coat Front, A-C Cup	13-14, 17-19, 22-24, 26-37	3-4	7	Bound Buttonhole Patch	1	1
1	Coat Front, D-H Cup	48-49, 52-54, 57-59, 61-72	1-2	8	Sleeve	116-126	7
2	Coat Back	73-76, 78-81, 83-86, 90-92, 96-98, 103-104	5-6	9	Sleeve Cuff	136-143	5
3	Front Facing	86-87, 93, 99, 105, 110, 115	3-4	10	Sleeve Lining	124-135	7
4	Back Neck Facing	1	1	11	Inseam Pocket (long only)	77-78	1
5	Coat Front Lining, A-C Cup	2-13, 15-17, 20-22, 25-26	1-2	12	Patch Pocket (short only)	133-134, 137-138	2
5	Coat Front Lining, D-H Cup	38-48, 50-52, 55-57, 60-61	3-4	13	Patch Pocket Lining (short only)	132-133	2
6	Coat Back Lining	82-83, 88-90, 94-96, 100-103, 106-109, 111-114	5-6				



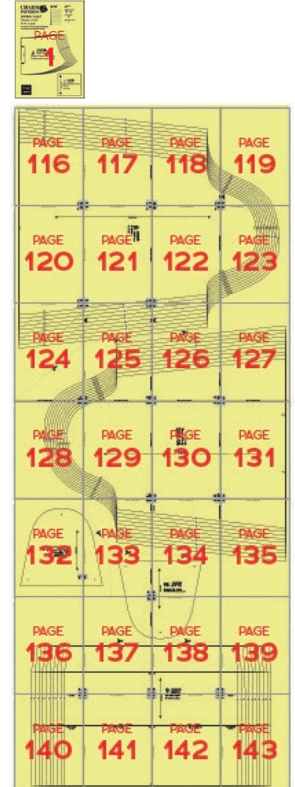
Coat Front & Lining,  
sizes A-C



Coat Front & Lining,  
sizes D-H



Coat Back & Lining,  
Front Facing, Inseam Pocket



Remaining pieces



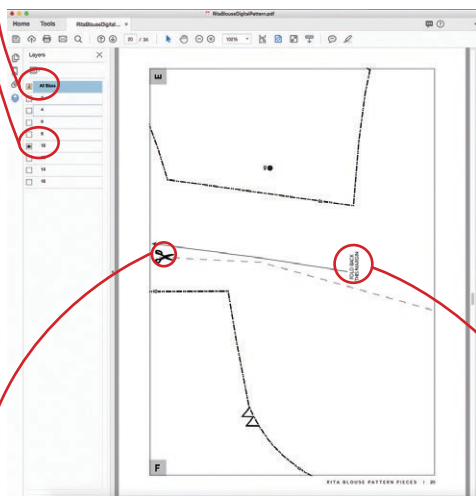
# HOW TO USE THIS PATTERN

The pattern pieces are tiled so you can print them on Letter (8½ x 11) or A4 size paper. You can also send the A0 pattern sheet PDF to a local or online printer (like [www.pdfplotting.com](http://www.pdfplotting.com)) to print on large sheets (36" x 48" for U.S. or A0 for international).

This pattern includes size layers. To get the best results, open either the Tiled or A0 pattern pieces PDF in Acrobat Reader.

Open the Layers Palette (View>Show/Hide>Navigation Panes>Layers) and hide all of the layer(s) except for the ones you want to print by clicking on the eye icon.

The All Sizes layer has general pattern information and will always print.



## WORKING WITH THE TILED PIECES

Go to File>Print and change the page range to the pages you need for the pieces you've chosen (see Pattern Pieces Printing Index). Make sure the Page Sizing settings to 100% or Actual Size. Test this after printing by measuring the 1" test box on the first page of the bodice pattern pieces.

Cut apart any pattern pieces that share a page by cutting on the gray long dashed lines. Then fold back the page margins on each page as directed.

Tape the pages together, butting up the folded page edges with the gray margin lines, matching up the letters in gray boxes.

# MORE FROM GERTIE



Purchase more patterns at [charmpatterns.com](http://charmpatterns.com).