

NOOM-NOOM SHOW:



WHERE TO FIND A PIERCING?



HEY,
MICKI!

OH! HI NAX!

I SEE YOU'VE
PUT A RING IN
YOUR NOSE.






AHA! COOL,
RIGHT?!



ONLY IN
THE NOSE?

IT'S
NONE OF
YOUR
BUSINESS. AND
ANYWAY, I'M
SLEEPY.

HANGI
NG OUT AT
THE BAR ALL
NIGHT
AGAIN?



I NEED TO
FIND OUT
WHERE ELSE MIKI
PUT THE RING
IN?



HECK! I HAVE A
NOOM-NOOM! I'LL
FIND OUT NOW





WHERE AM I ?





AHA!
MICKY'S
SHOES!





THAT'S THE SIZE!

SWO



YO-HO!
I AM THE
KING OF THE
MOUNTAIN!

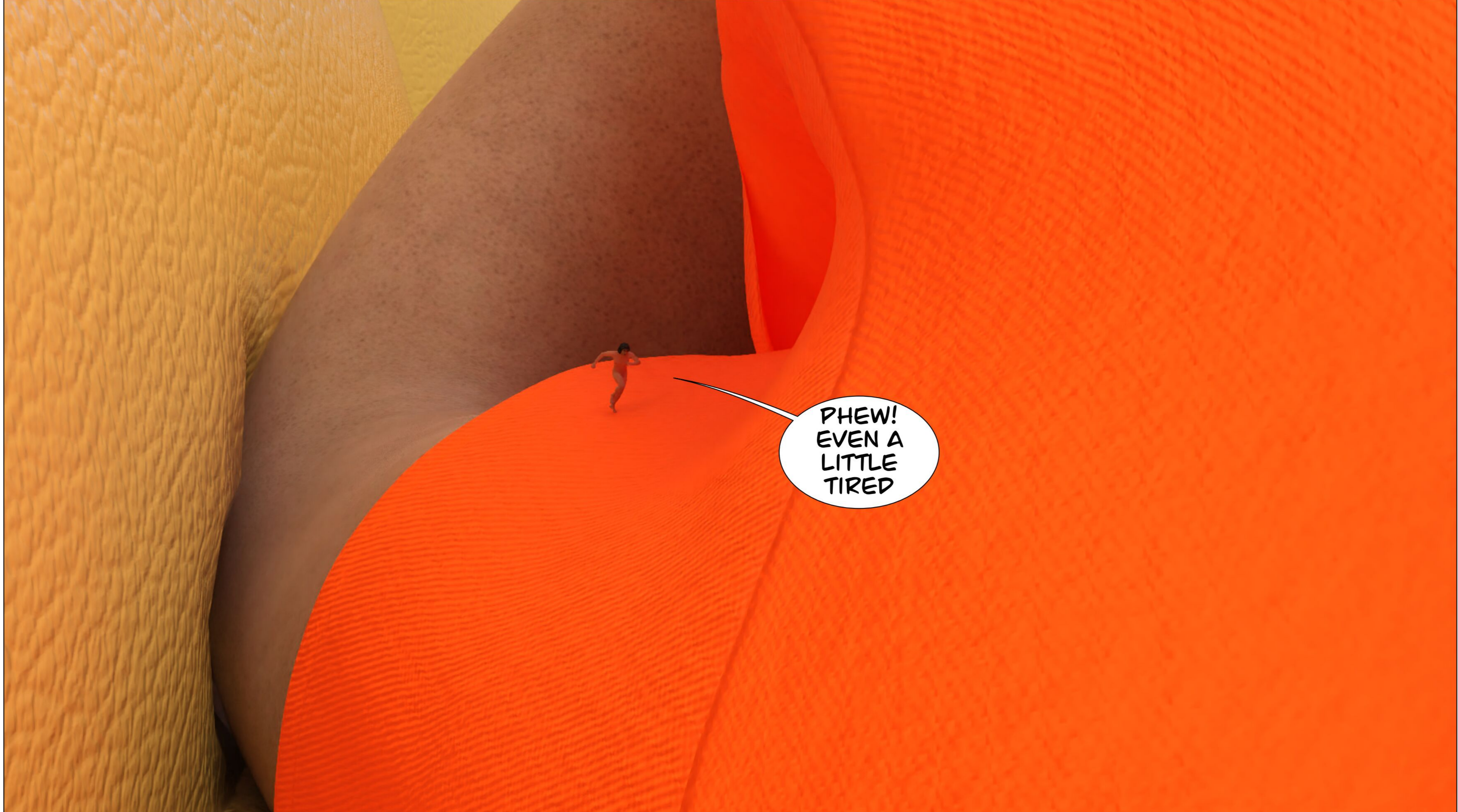




A giant, yellow, textured hand is reaching down from the top of the frame into an office. The hand's fingers are curled, and its palm is flat. A tiny, nude human figure stands on the edge of the palm. The office below has a wooden floor, a desk with a computer monitor, and large windows showing a cityscape. The ceiling has a grid of recessed lights.

I'LL
PROBABLY
START WITH
THE NOSE





PHEW!
EVEN A
LITTLE
TIRED



THE MAIN
THING IS THAT
MICKI DOESN'T
WAKE UP





A muscular man with dark hair is shown from a rear three-quarter view, standing on a large, rounded, reddish-pink fleshy surface. He has his hands pressed against the surface, one on the left and one on the right, as if feeling its texture or strength. The surface has a wrinkled, skin-like texture. In the upper left, a white speech bubble with a black outline contains the text "WELL, WELL!". The overall scene is surreal and emphasizes the man's physique and the organic nature of the environment.

WELL,
WELL!

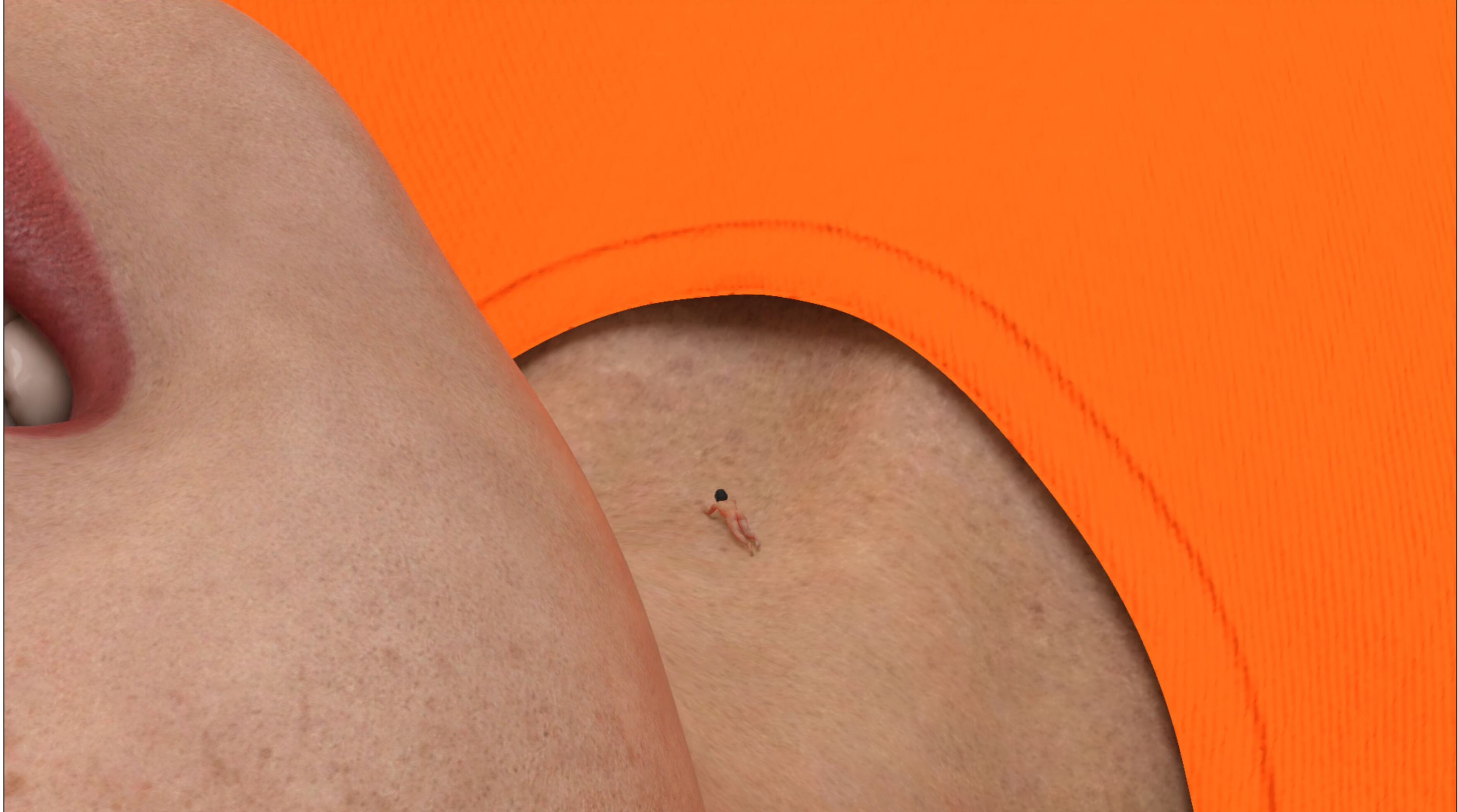


HELP ME!

A-A-
A....

...A-A-CHOO!!







WE
CONTINUE OUR
SEARCH



A person is crawling on a large, dark, textured mound that dominates the foreground. The person is positioned in the middle ground, facing left, with their hands and feet on the surface. The background consists of a room with wooden bookshelves filled with books and binders. The lighting is dim and warm, creating a somber atmosphere. A speech bubble is attached to the person's head.

GOT TO THE
NIPPLE

THERE'S
NOTHING
THERE



MMMM.M



MAY
BE IN THE
NAVEL?



A person with dark hair is sitting in a shallow depression in a large sand dune. The dune is a uniform light brown color. A white speech bubble with a black outline is positioned above the person, containing the text 'ALSO NO'. The background shows the top of the dune and a dark, possibly indoor, area at the top right.

ALSO NO



MAYBE
ONLY IN THE
NOSE?

I FOUND IT!!!



A character with dark hair, wearing a dark, textured garment, is positioned in a dark, cavernous environment. The character is pointing towards a large, glowing, golden ring that is partially visible in the foreground. The ring has a bright, yellowish-gold glow and is set against a dark, reddish-brown background. The character's face is partially visible, and they appear to be speaking. The overall scene is dimly lit, with the primary light source being the ring itself. The background consists of dark, curved surfaces, possibly rock or stone, creating a sense of depth and mystery.

HERE IT
IS-A RING!

IN THE
CLITORIS!



ALMOST AS
BIG AS ME



WHAT'S
THAT
NOISE?





MMM...





OH, SHIT! I THINK
MIKI SENSED ME
AND GOT AROUSED



**SHE'S
MASTURBATING!**

YES!YES!






WHAT?
NAX?! ARE
YOU HERE?

I HAD A
STRANGE DREAM



A woman with blonde hair, wearing a bright orange short-sleeved top and black pants, stands in a room. She is barefoot, and her black pants are pulled down to her ankles. She has her arms outstretched in a shrugging gesture. To her right is a bright yellow sofa. In the background, there is a large wooden bookshelf filled with books and binders. The floor is made of dark wood planks. A speech bubble is positioned to the right of the woman, containing text.

WHILE NAX IS
AWAY, I CAN PLAY
WITH MY TOY



WHAT'S SHE
TALKING
ABOUT?



HEY!
MICKEY!

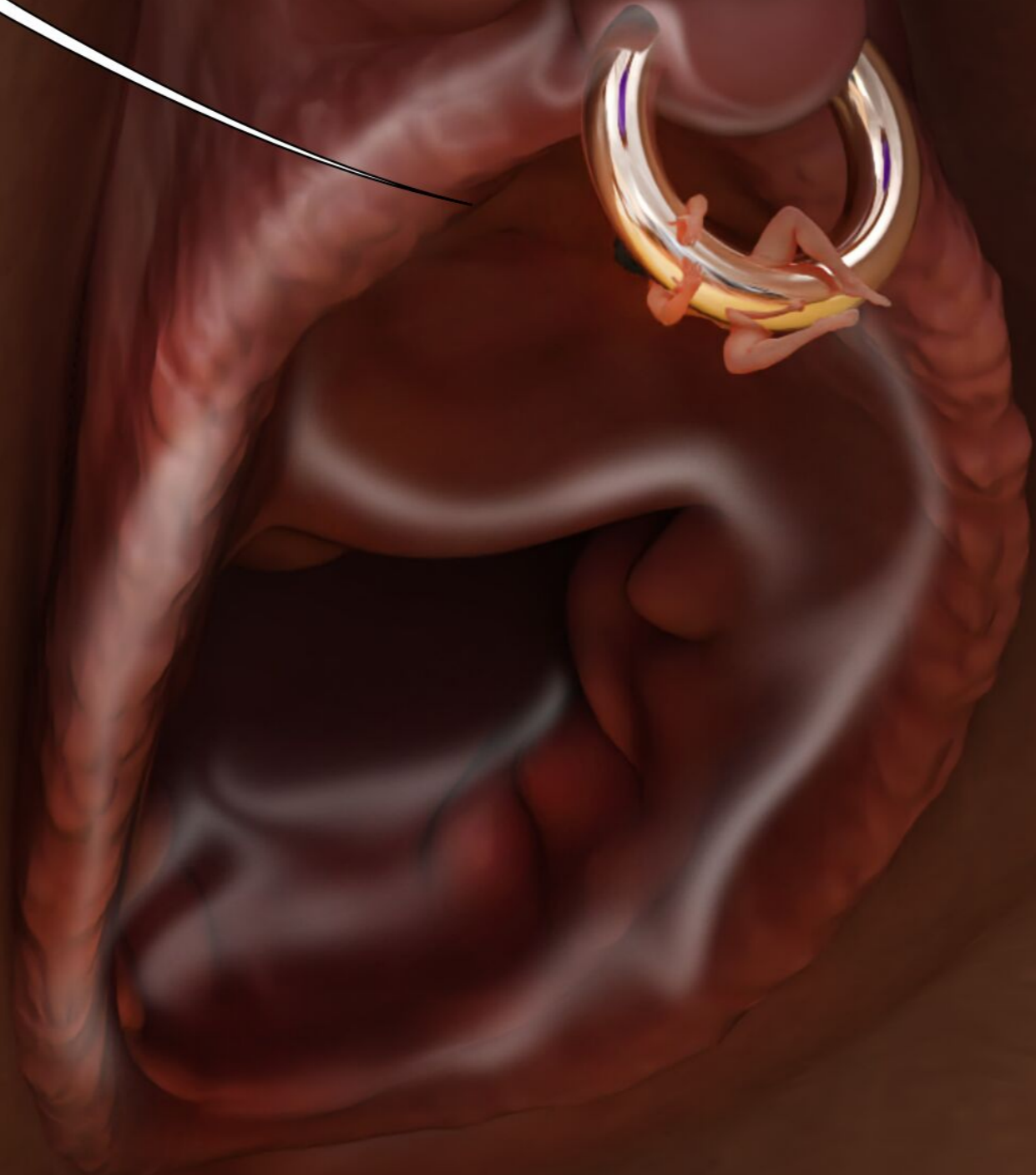


HERE ON THIS SHELF





A TOY?!
IT'S
GIGANTIC



A 3D rendered character with a purple mask and a speech bubble. The character has a large, hairy head, a purple mask covering the lower half of their face, and a purple sleeve. They have dark, rectangular markings on their fingers. A speech bubble is positioned near their mouth, containing the text "IT'S A WHOLE TREE!". The character is set against a background of a textured brown wall and a yellow surface.

IT'S A
WHOLE
TREE!



OH! GOOD!

A comic book panel featuring a close-up of a hand holding a gold ring. The hand is rendered with detailed shading and texture. In the background, a tiny, nude figure is visible, looking up at the ring. A speech bubble originates from the ring, containing the text "I DON'T LIKE IT". The bottom right corner of the panel is a solid purple color.

I DON'T
LIKE IT



NO, NO, NO!

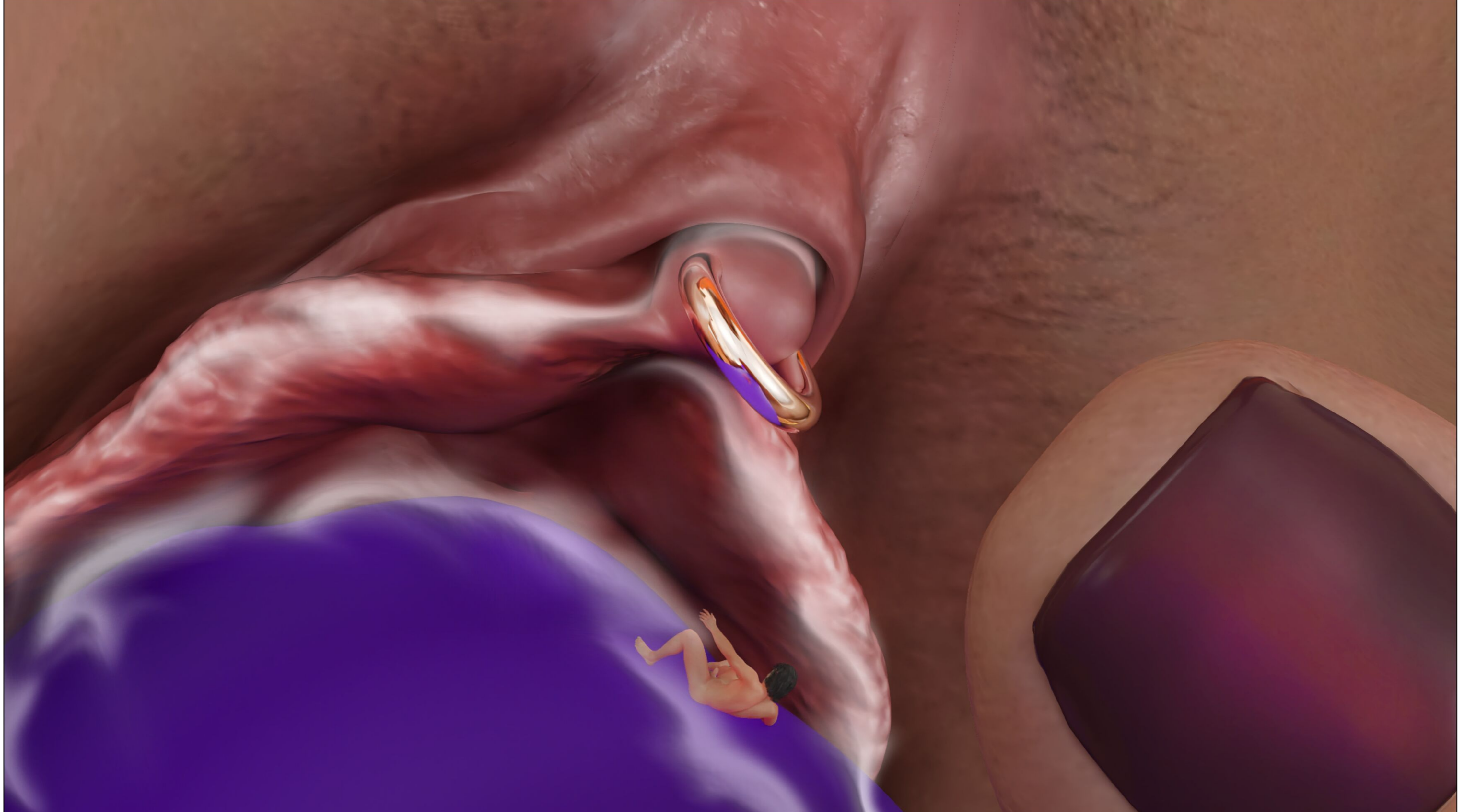




STOP!
THAT'S
ENOUGH!

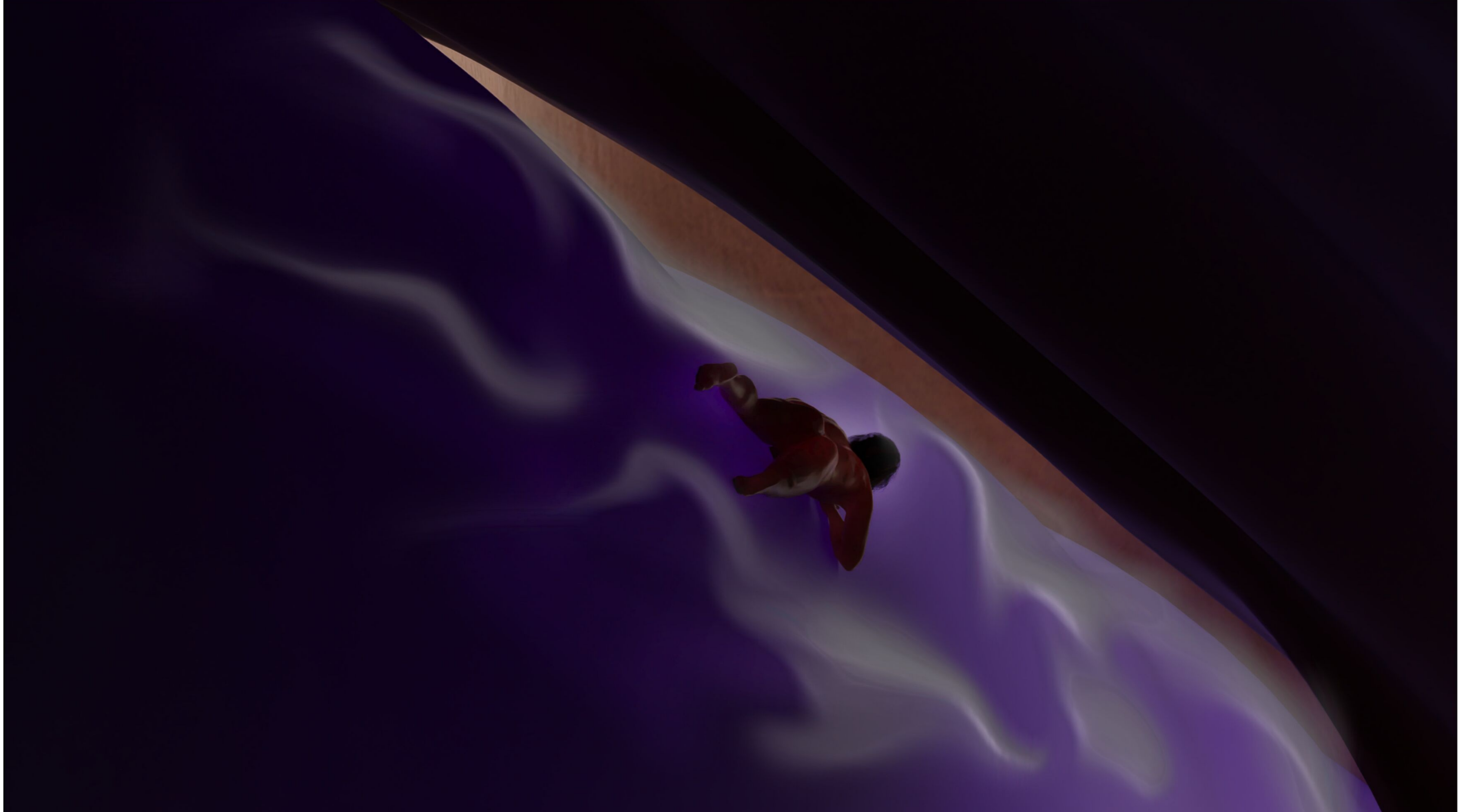
A close-up photograph of a person's hand pulling a purple latex glove over their fingers. The glove is being pulled from the wrist towards the fingers, which is the opposite direction of how it is normally worn. The person's skin is fair, and they have dark hair on their hand. A small gold ring is visible on their finger. The background is a wooden floor with a dark wood grain. A speech bubble is overlaid on the image, pointing to the glove.

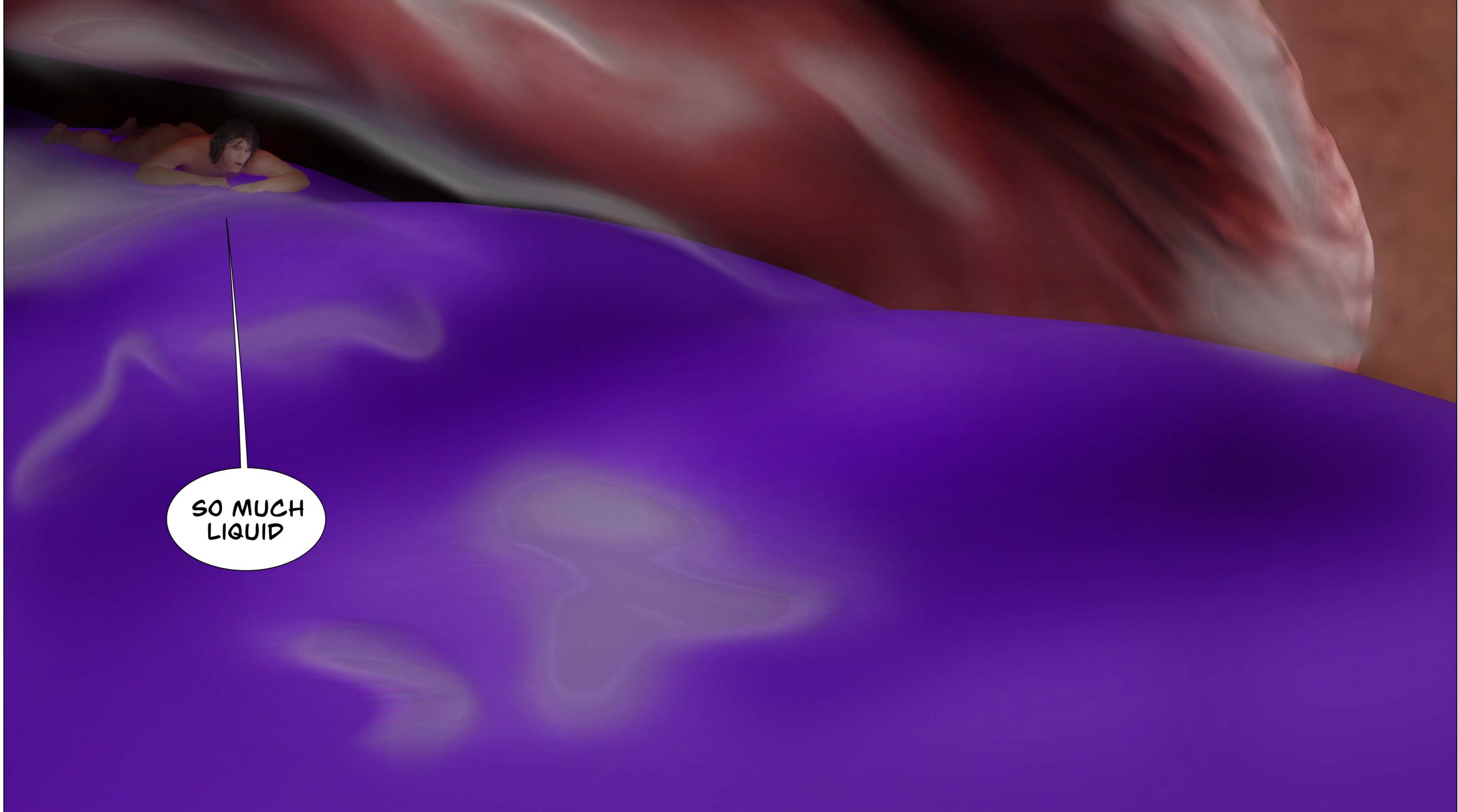
OH, NO! NOW
IN THE
OPPOSITE
DIRECTION





DAMN IT! THE
NOOM-NOOM
ACTION IS NOT
OVER YET





SO MUCH
LIQUID






HURRAY! I
SLIPPED OUT!

UGH!
MIKI! WHAT
A STINK!



OH, YES! I
WANT IN THE
ASS





WOW! WILL
IT REALLY GO
ALL THE WAY
IN?



ENTERED!!!

OH,
MY GOD!
YES!YES!







YES!



WE NEED TO
CLEAN UP BEFORE
NAX COMES IN.





HEY MIKI!
I'M HERE!



WHAT?
DID I HEAR
SOMETHING?









NOW CLEAN!



NOW I KNOW
WHERE ELSE
YOU HAVE YOUR
PIERCINGS!

NAX!?! DID YOU
PEEK? PERVERT!

