

CHARM ARTIST COLLECTIVE **BROOKLYN JACKET**

Sizes 2-20
with cup sizes A-H

3/8 inch (1.5 cm) seam allowances are included on all pattern pieces.

PAGE 1 OF 5

PATTERN PIECE INDEX

- 1 Jacket Front, A Cup
- 1 Jacket Front, B/C Cup
- 2 Jacket Back
- 5 Collar
- 8 Back Neck Facing
- 9 Back Waist Facing (for cropped version)
- 10 Back Waist Facing (for waist-length version)
- 13 Faux Welt Pocket (optional)

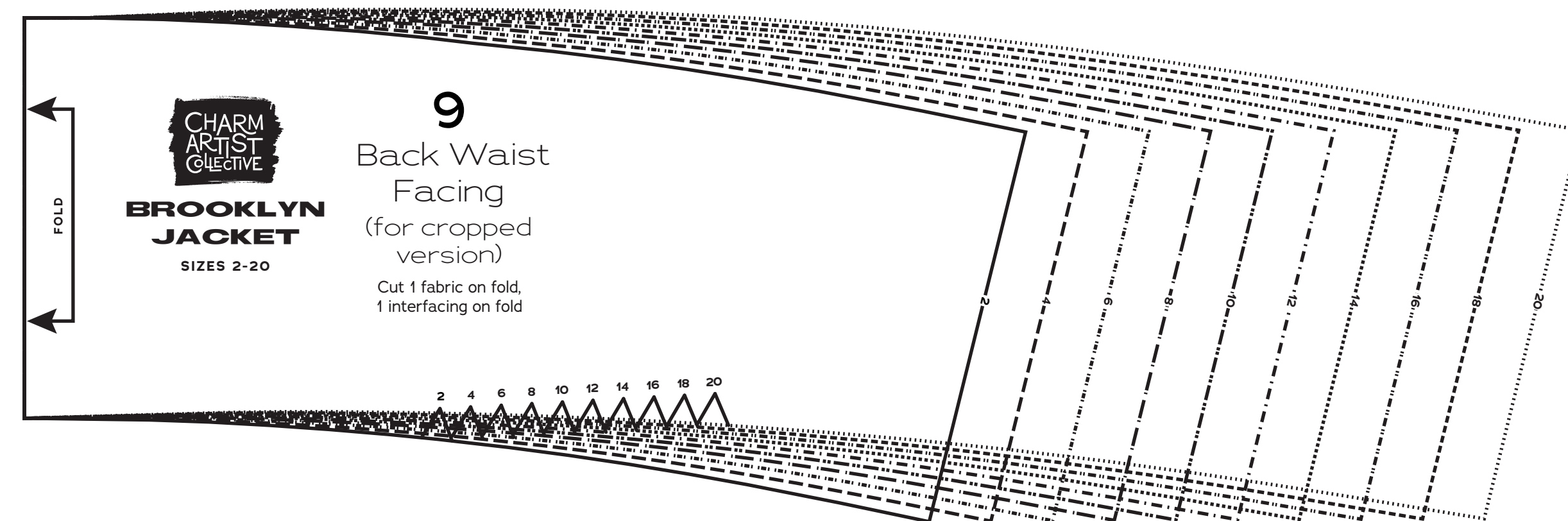
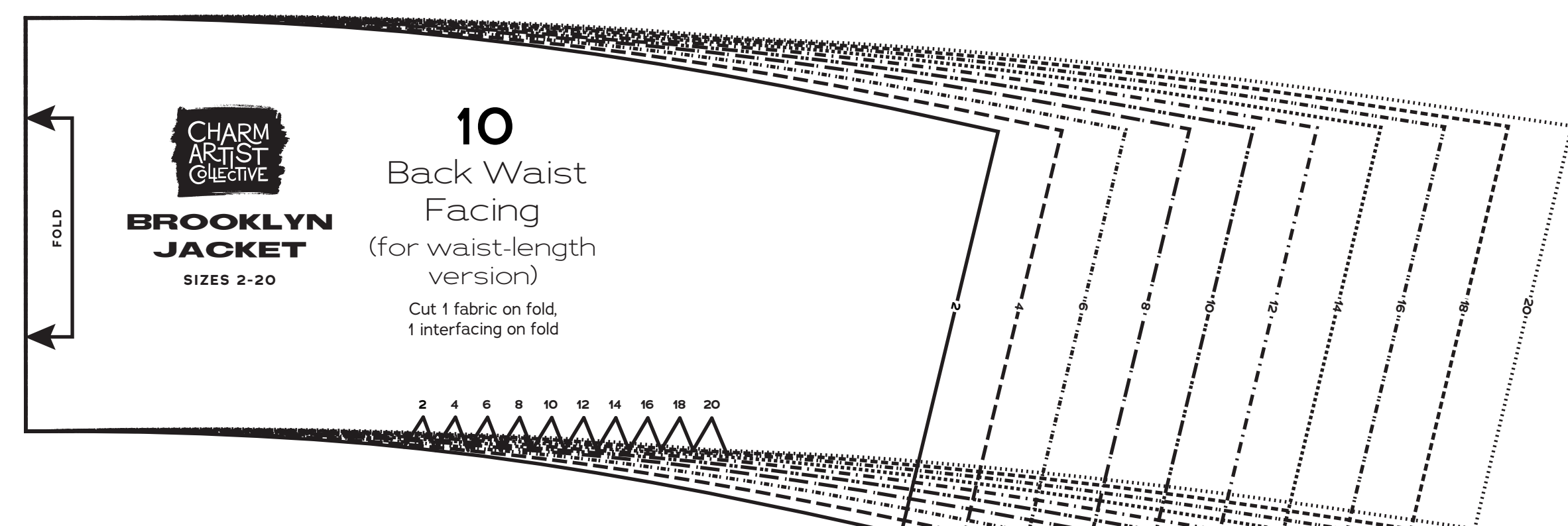
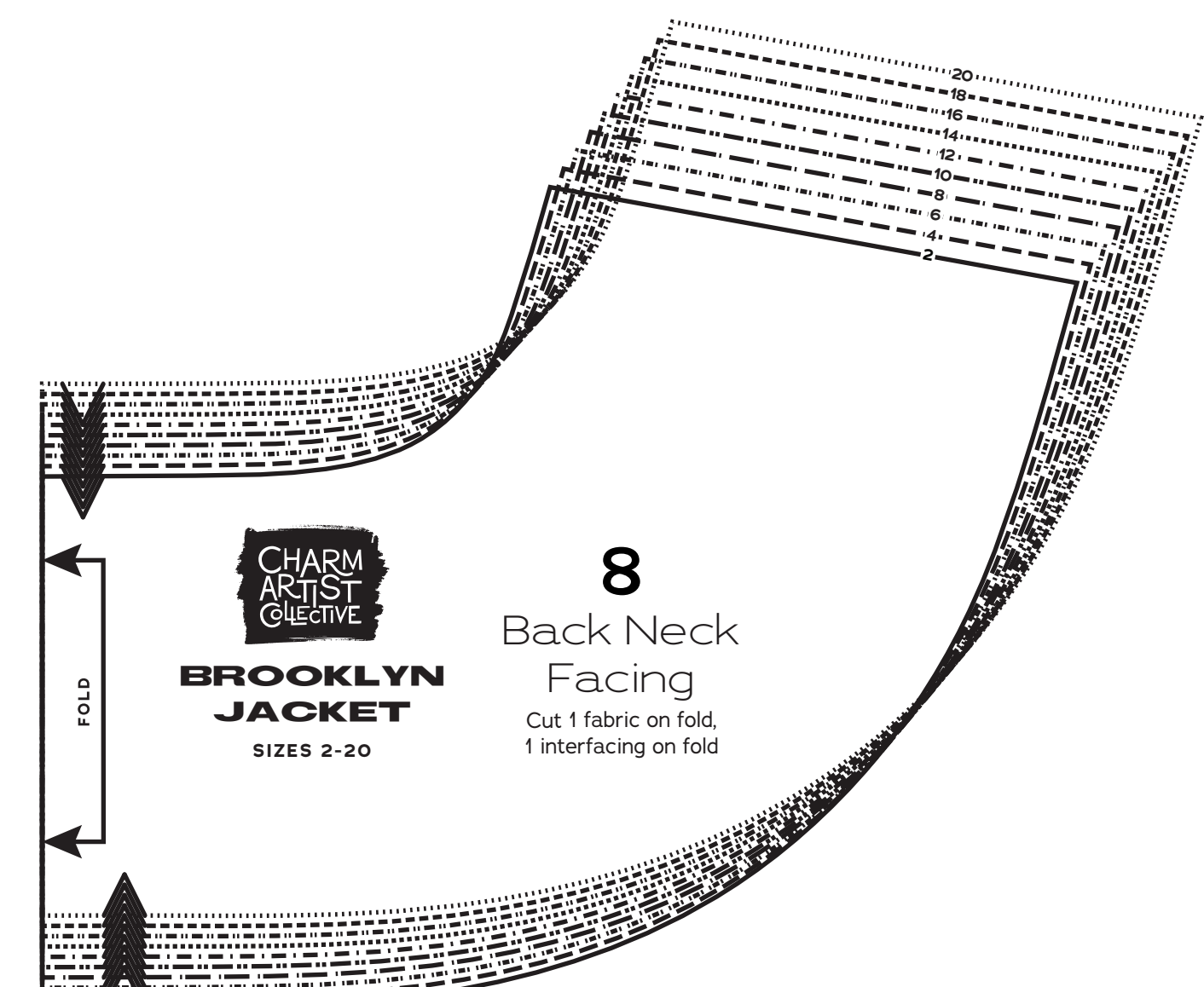
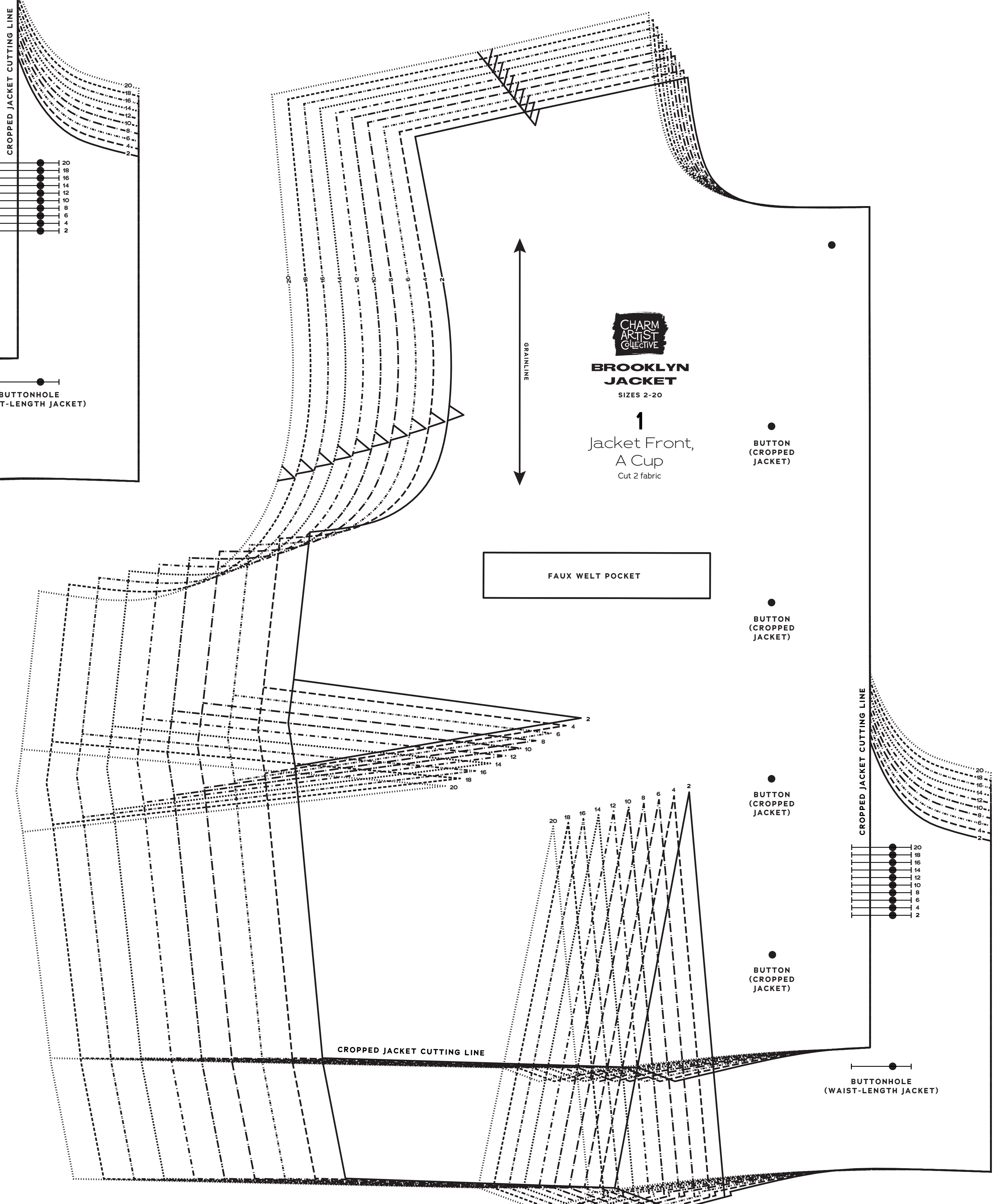
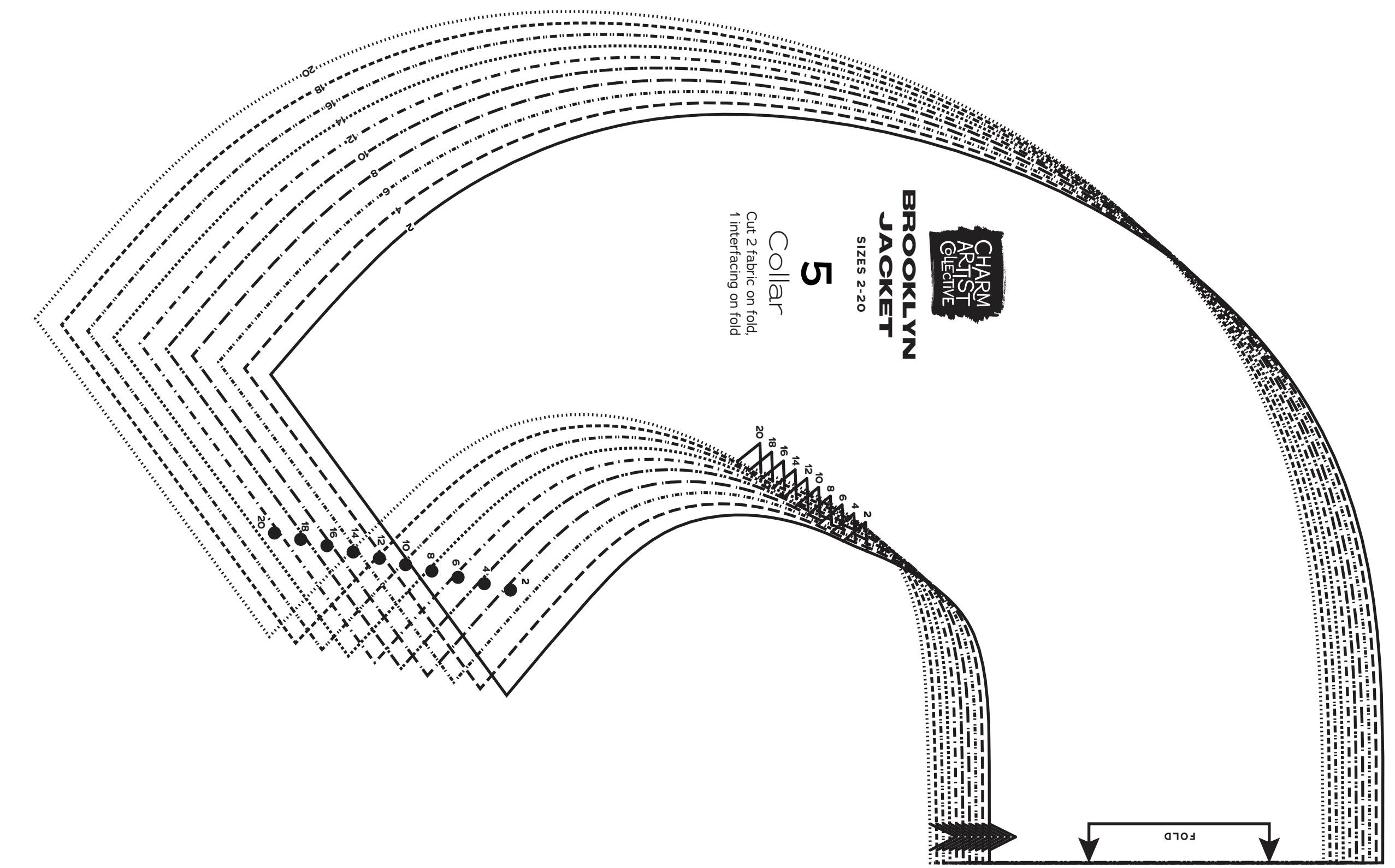
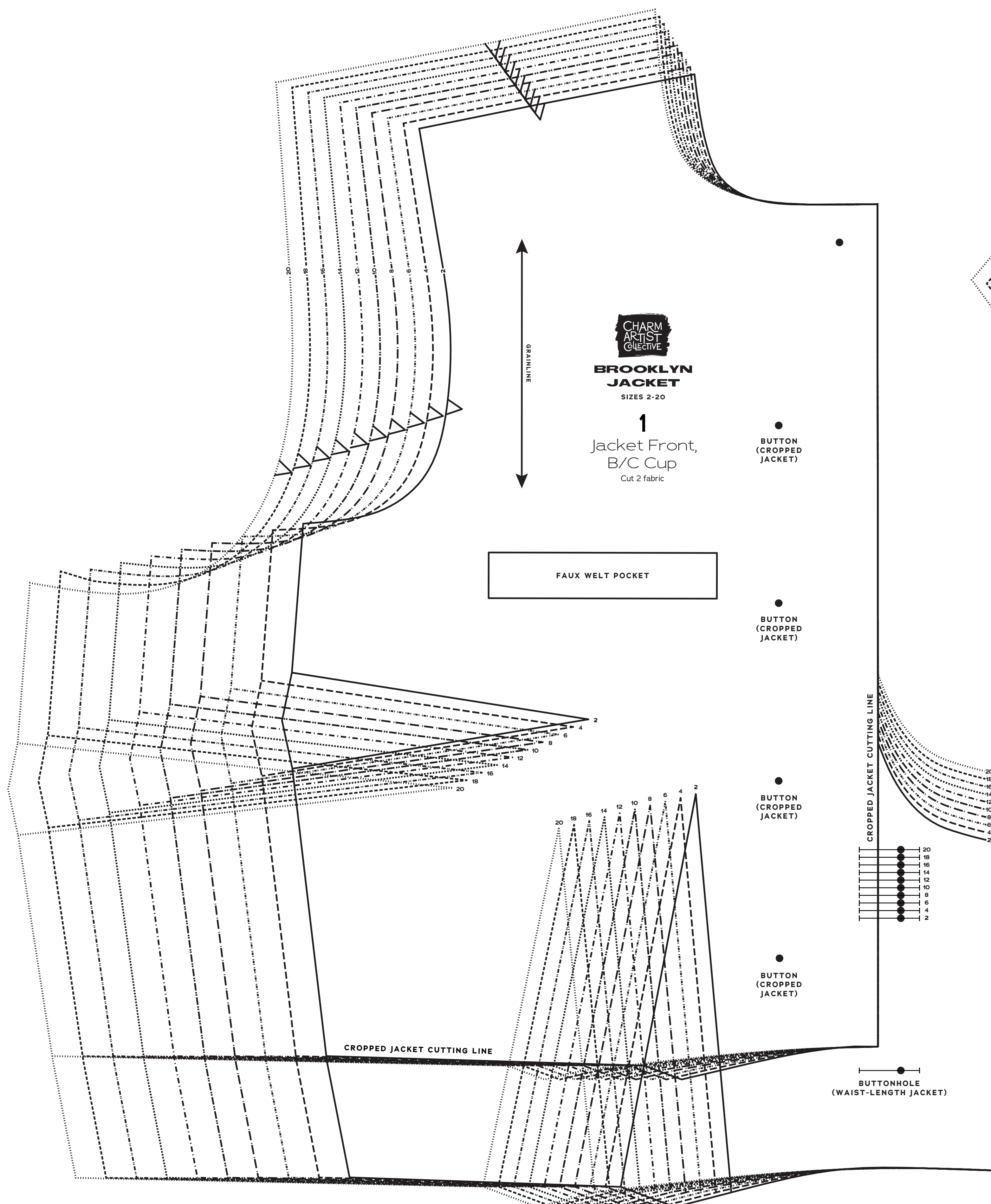
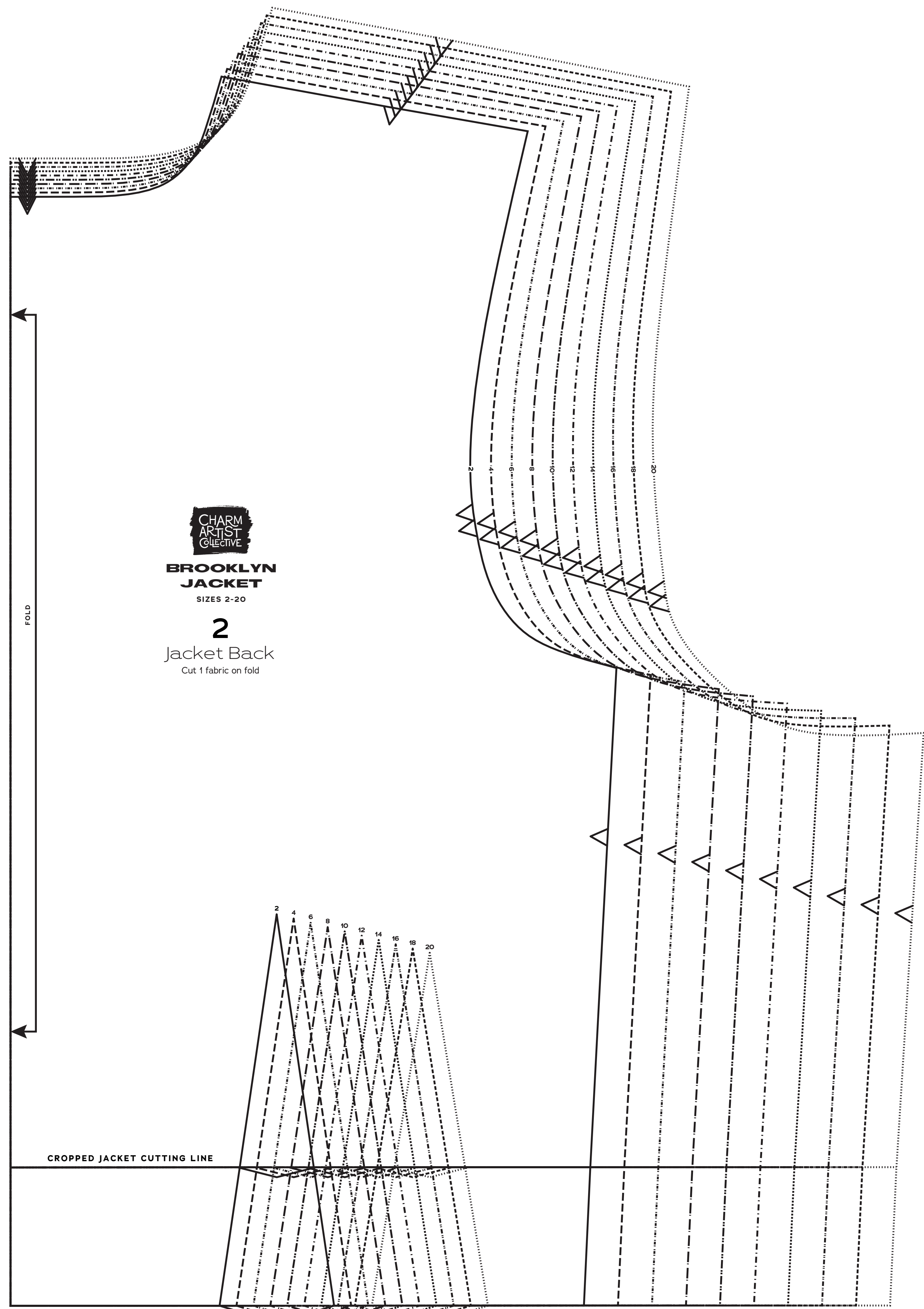
SIZES 2-20 PATTERN SIZE KEY

- 2
- 4
- 6
- 8
- 10
- 12
- 14
- 16
- 18
- 20

SYMBOL KEY

- grainline arrow
- match point/ placement mark
- 1" test square

© 2020 Charm Patterns by Serika. Distribution and Commercial Use Prohibited.



CHARM ARTIST COLLECTIVE
BROOKLYN JACKET

Sizes 2-20
 with cup sizes A-H

3/8 inch (1.5 cm) seam allowances
 are included on all pattern pieces.

PAGE 2 OF 5

PATTERN PIECE INDEX
 1 Jacket Front, D/DD Cup
 1 Jacket Front, F/G Cup
 1 Jacket Front, H Cup

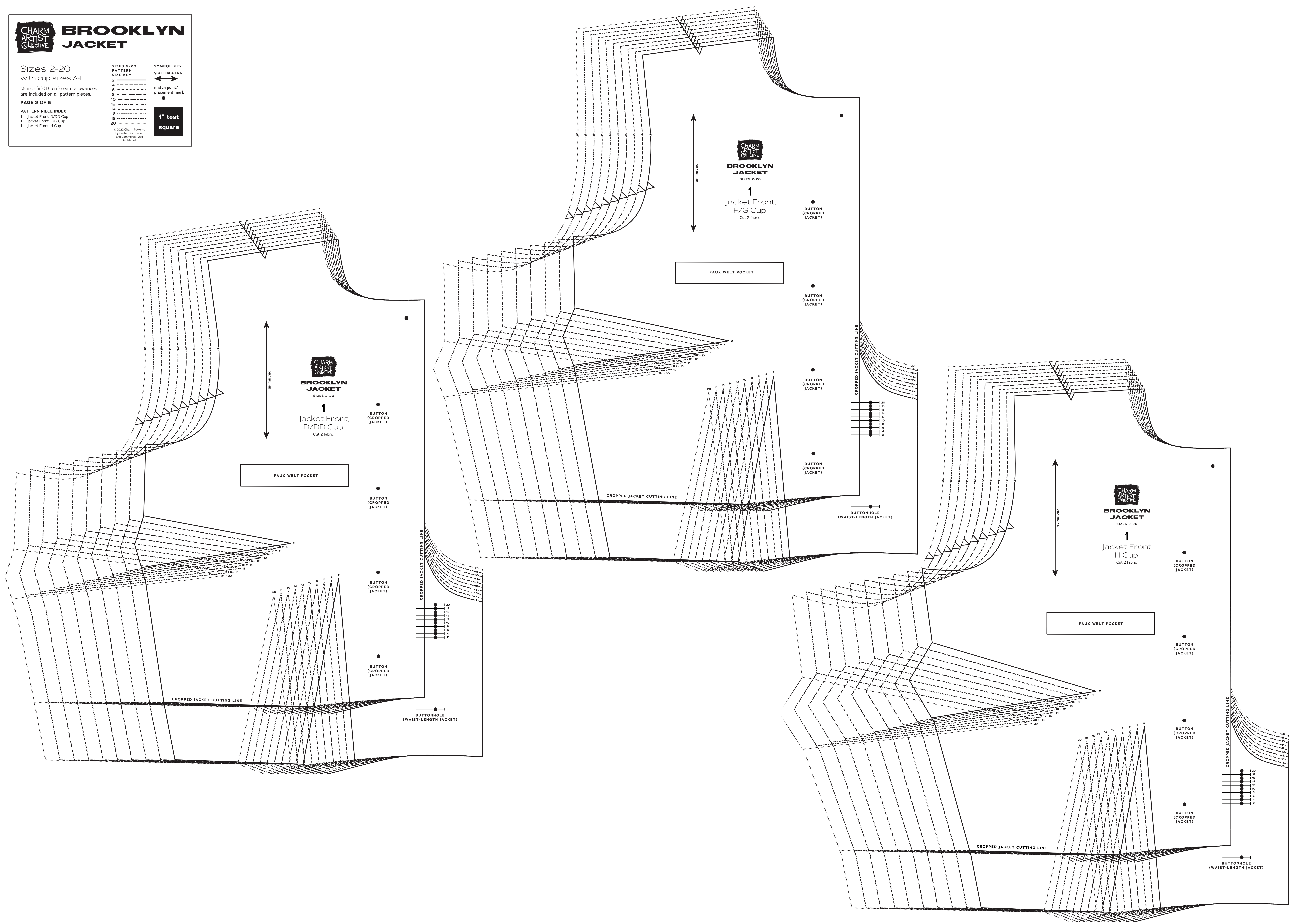
SIZES 2-20
PATTERN
SIZE KEY

2 —————
 4 - - - - -
 6
 8 - - - - -
 10
 12 - - - - -
 14
 16 - - - - -
 18
 20 - - - - -

SYMBOL KEY
 grainline arrow
 match point/
 placement mark

1" test
 square

© 2020 Charm Patterns
 by Serika. Distribution
 and Commercial Use
 Prohibited.



CHARM ARTIST COLLECTIVE
BROOKLYN JACKET

Sizes 2-20
 with cup sizes A-H

3/8 inch (1.5 cm) seam allowances are included on all pattern pieces.

PAGE 3 OF 5

PATTERN PIECE INDEX

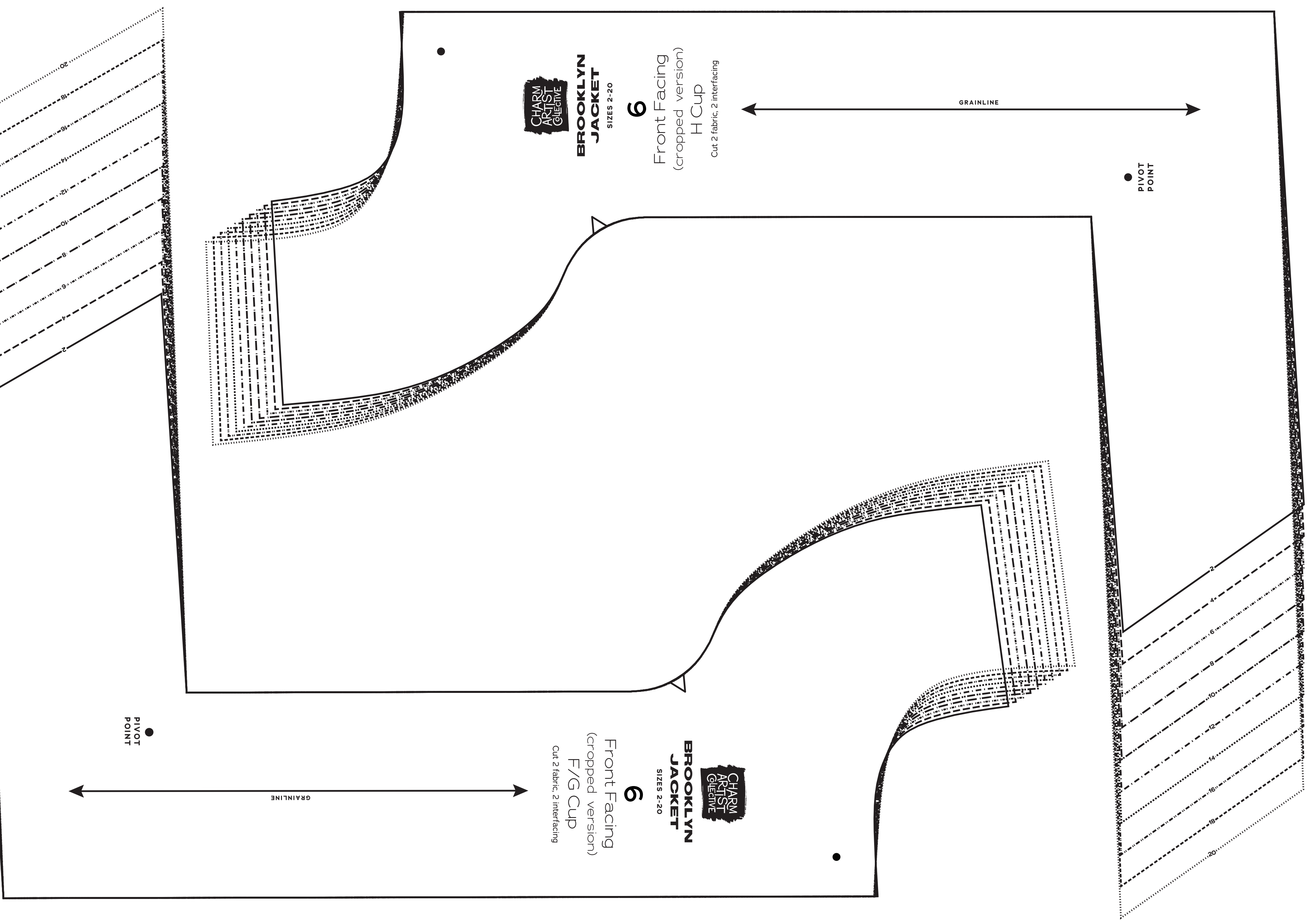
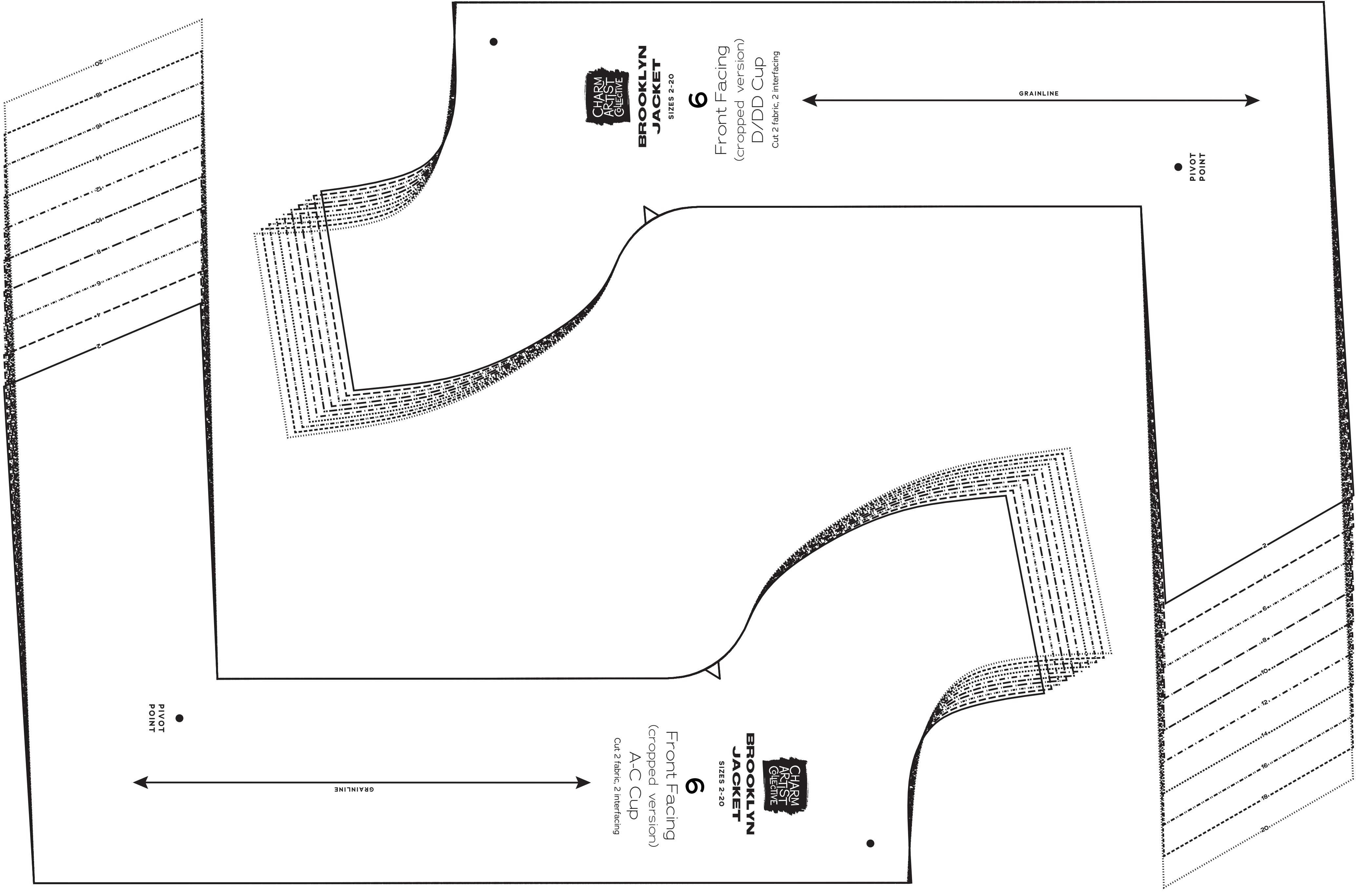
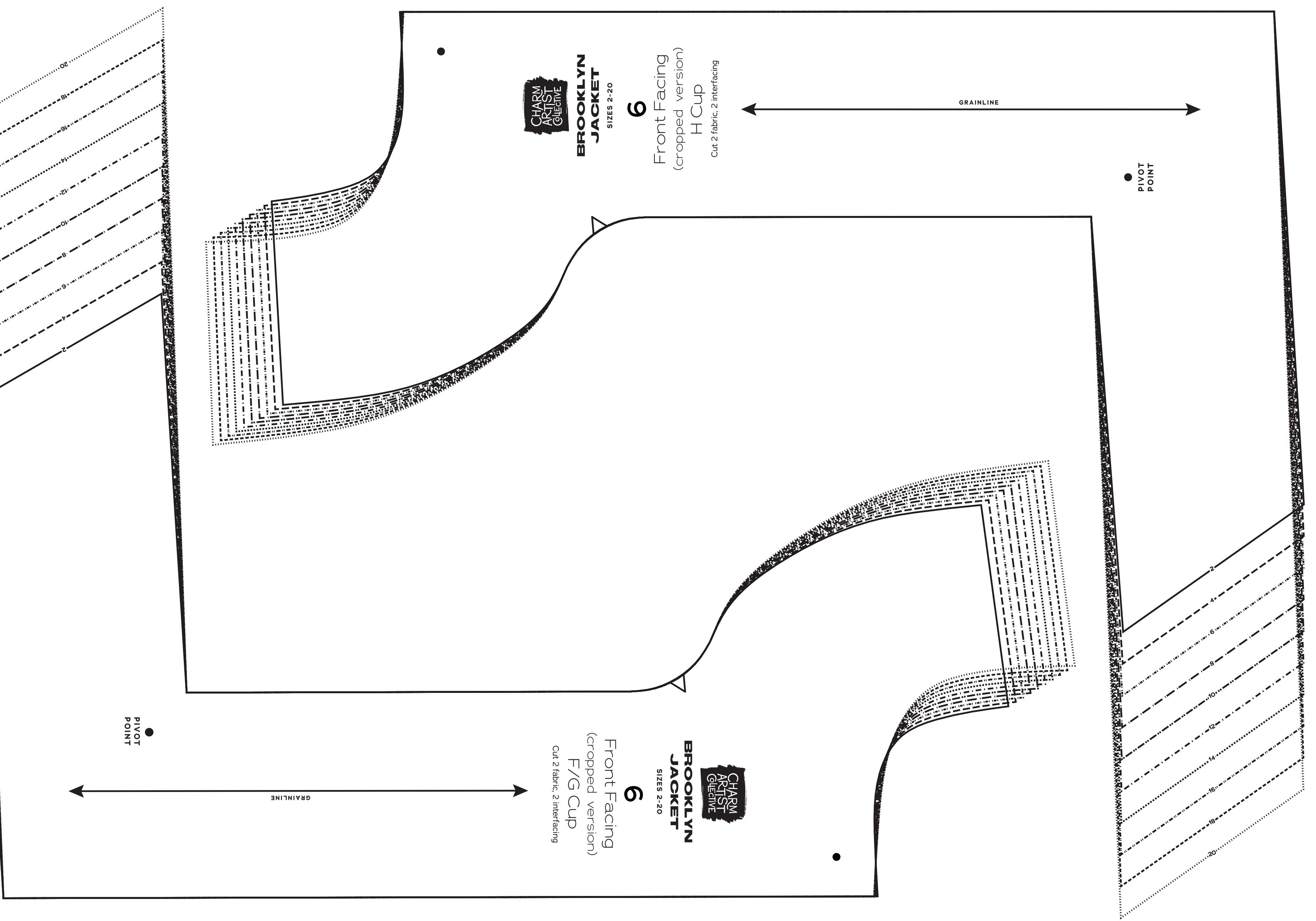
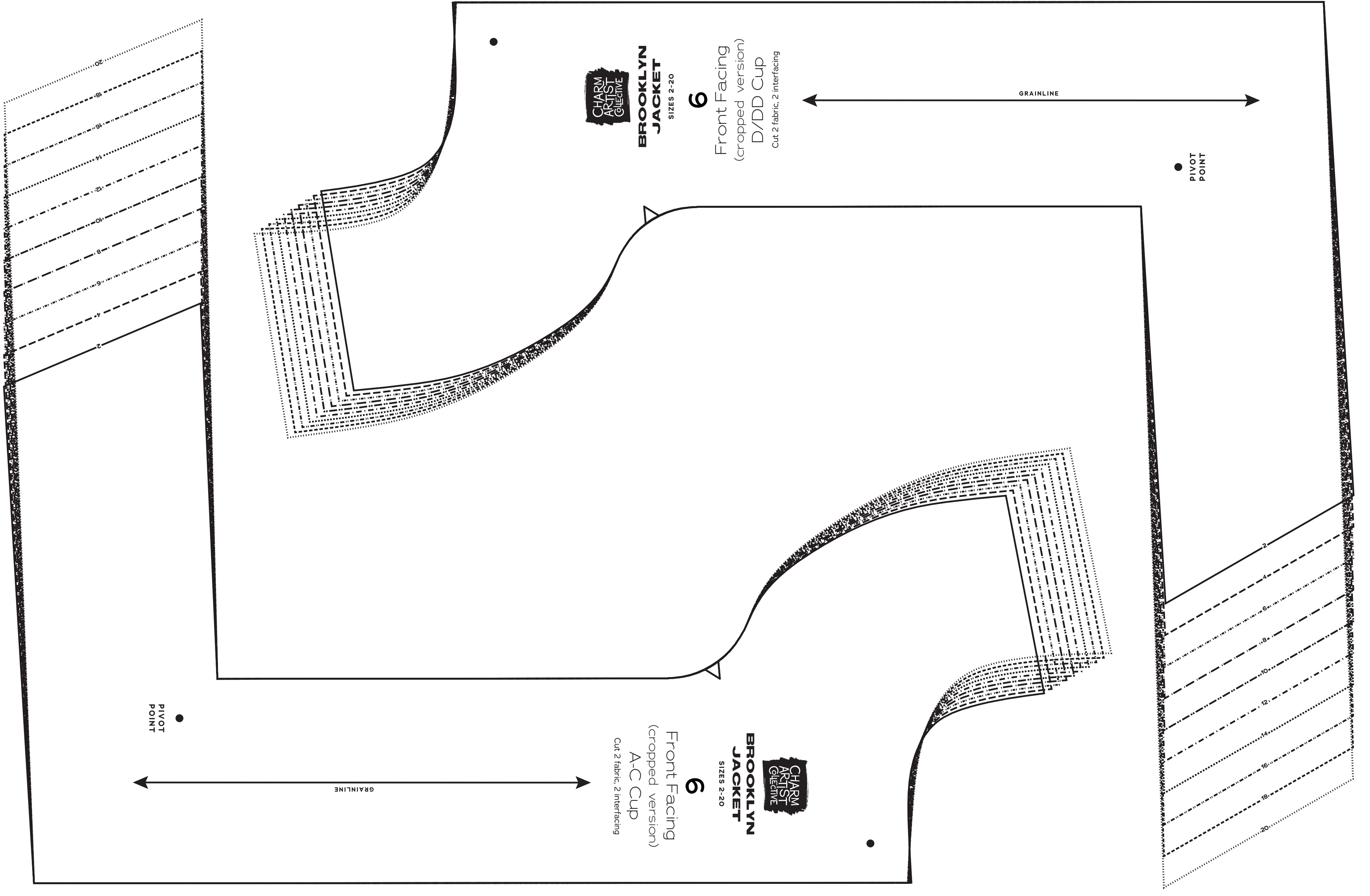
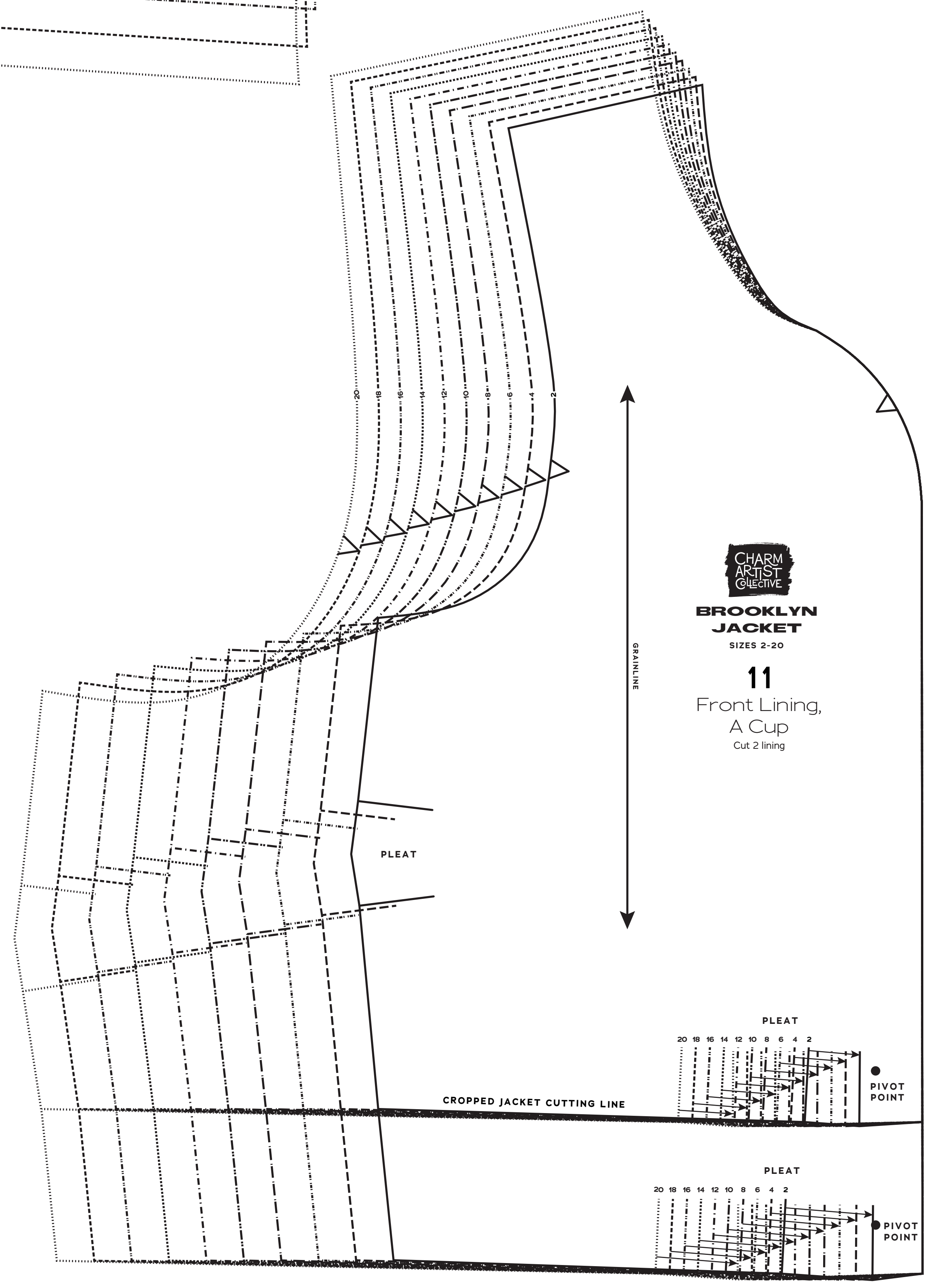
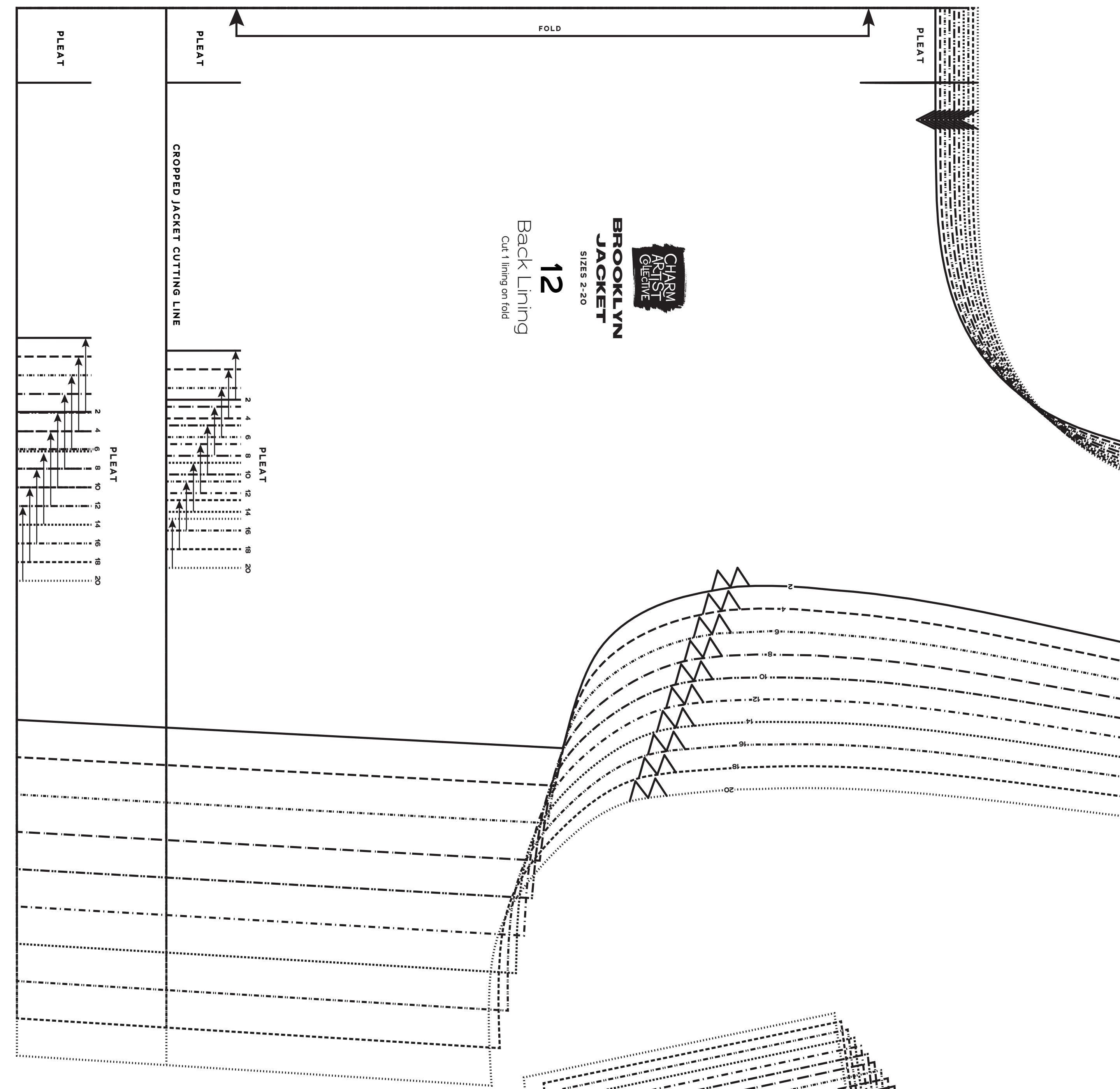
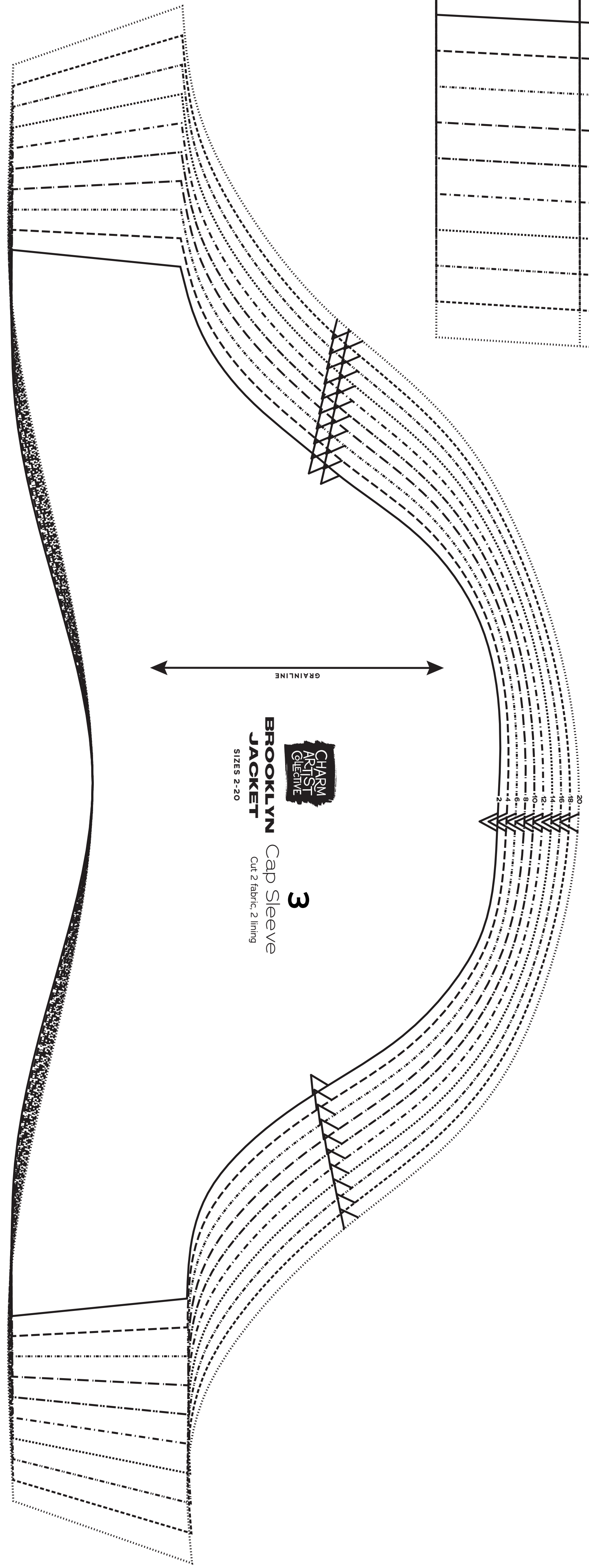
- 3 Cap Sleeve
- 6 Front Facing (cropped version), A-C Cup
- 6 Front Facing (cropped version), D/DD Cup
- 6 Front Facing (cropped version), F/G Cup
- 6 Front Facing (cropped version), H Cup
- 11 Front Lining, A Cup
- 12 Back Lining

SIZES 2-20 PATTERN SIZE KEY

- 2 —————
- 4 - - - - -
- 6 - - - - -
- 8 - - - - -
- 10 - - - - -
- 12 - - - - -
- 14 - - - - -
- 16 - - - - -
- 18 - - - - -
- 20 - - - - -

SYMBOL KEY

- ▶ grainline arrow
- ↔ match point/ placement mark
- pivot point
- 1" test square



CHARM ARTIST COLLECTIVE
BROOKLYN JACKET

Sizes 2-20
 with cup sizes A-H

3/8 inch (1.5 cm) seam allowances are included on all pattern pieces.

PAGE 4 OF 5

PATTERN PIECE INDEX

4	Three-Quarter Sleeve
7	Front Facing (waist-length version), A-C Cup
7	Front Facing (waist-length version), D/DD Cup
7	Front Facing (waist-length version), F/G Cup
7	Front Facing (waist-length version), H Cup

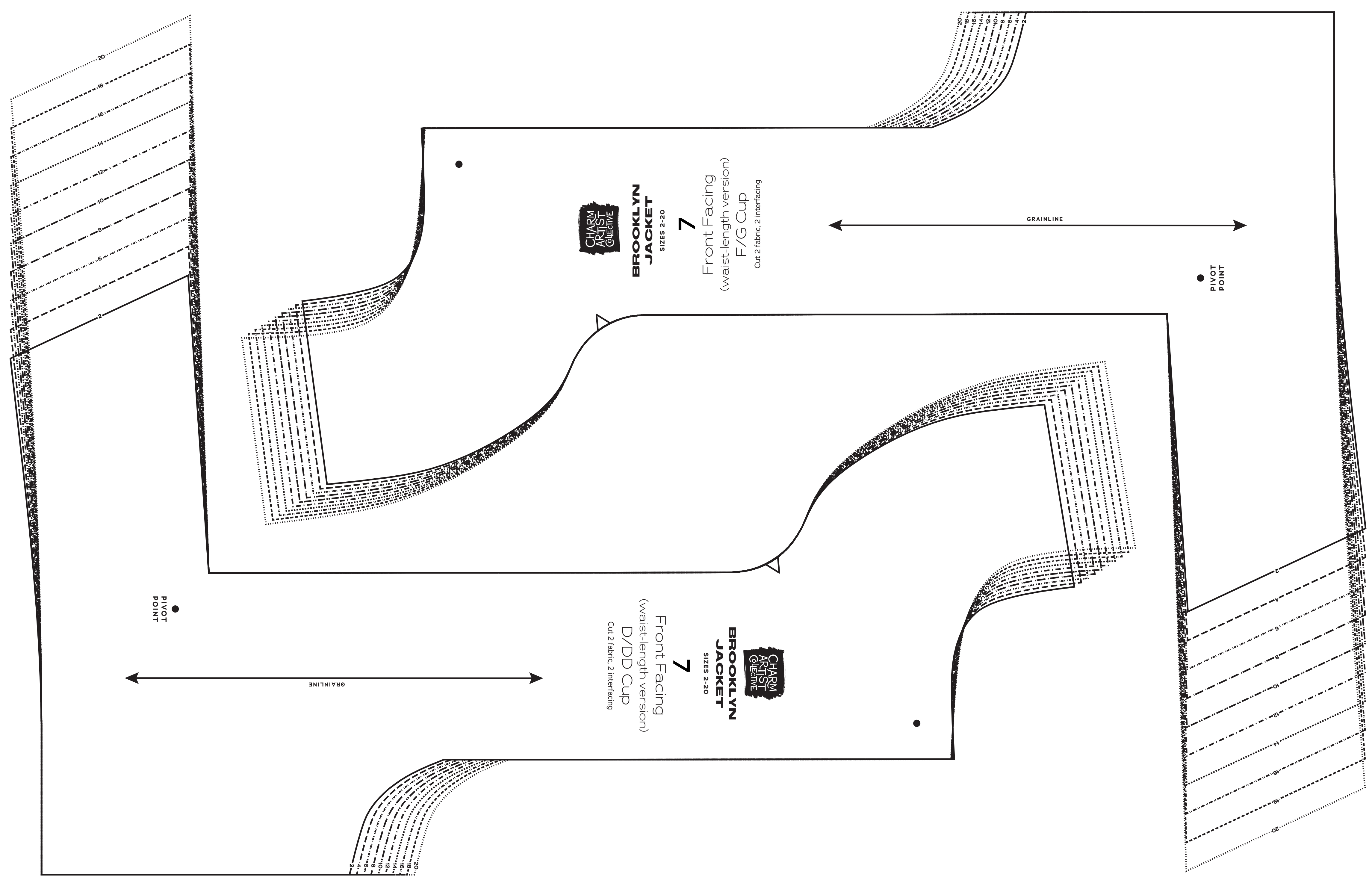
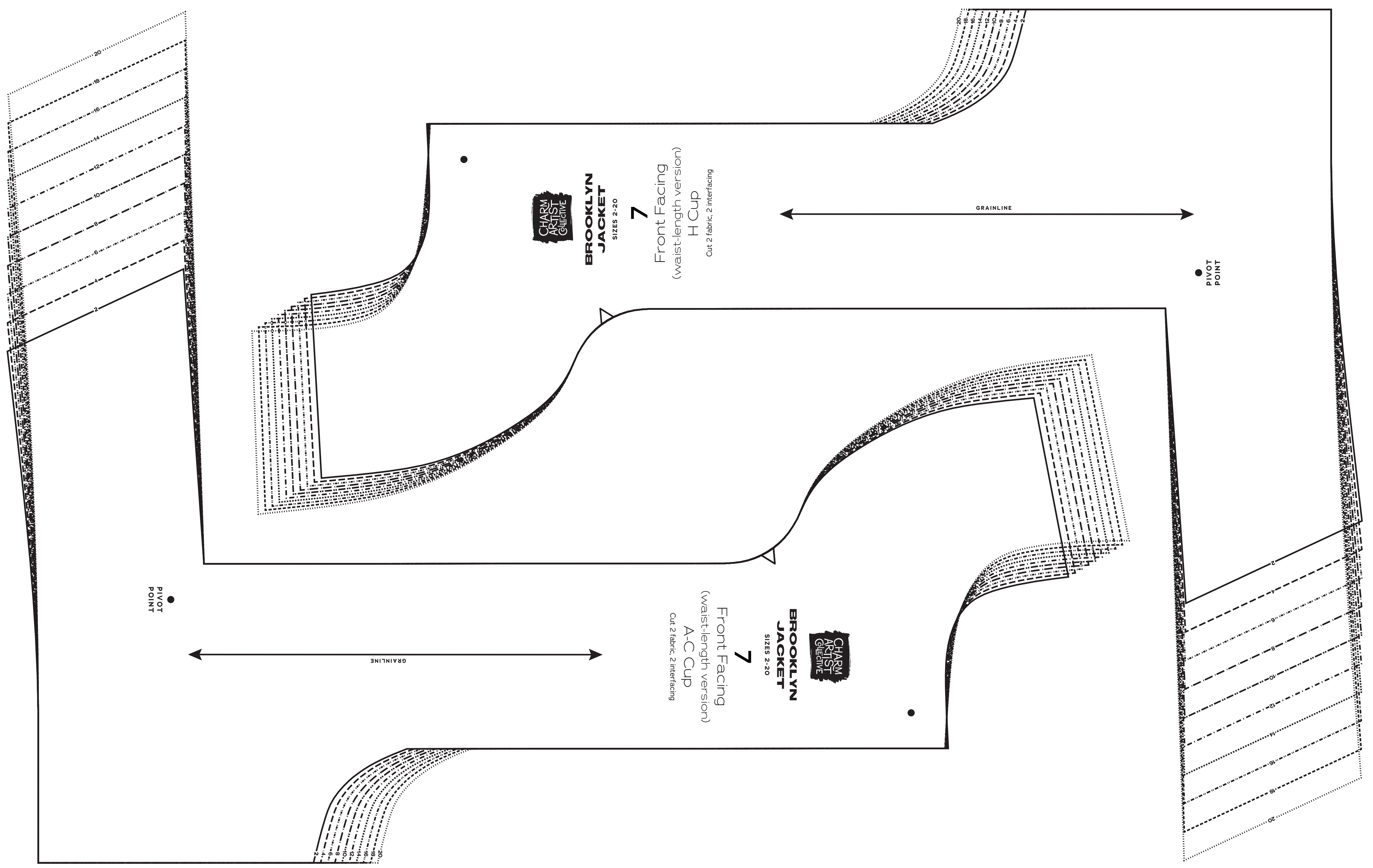
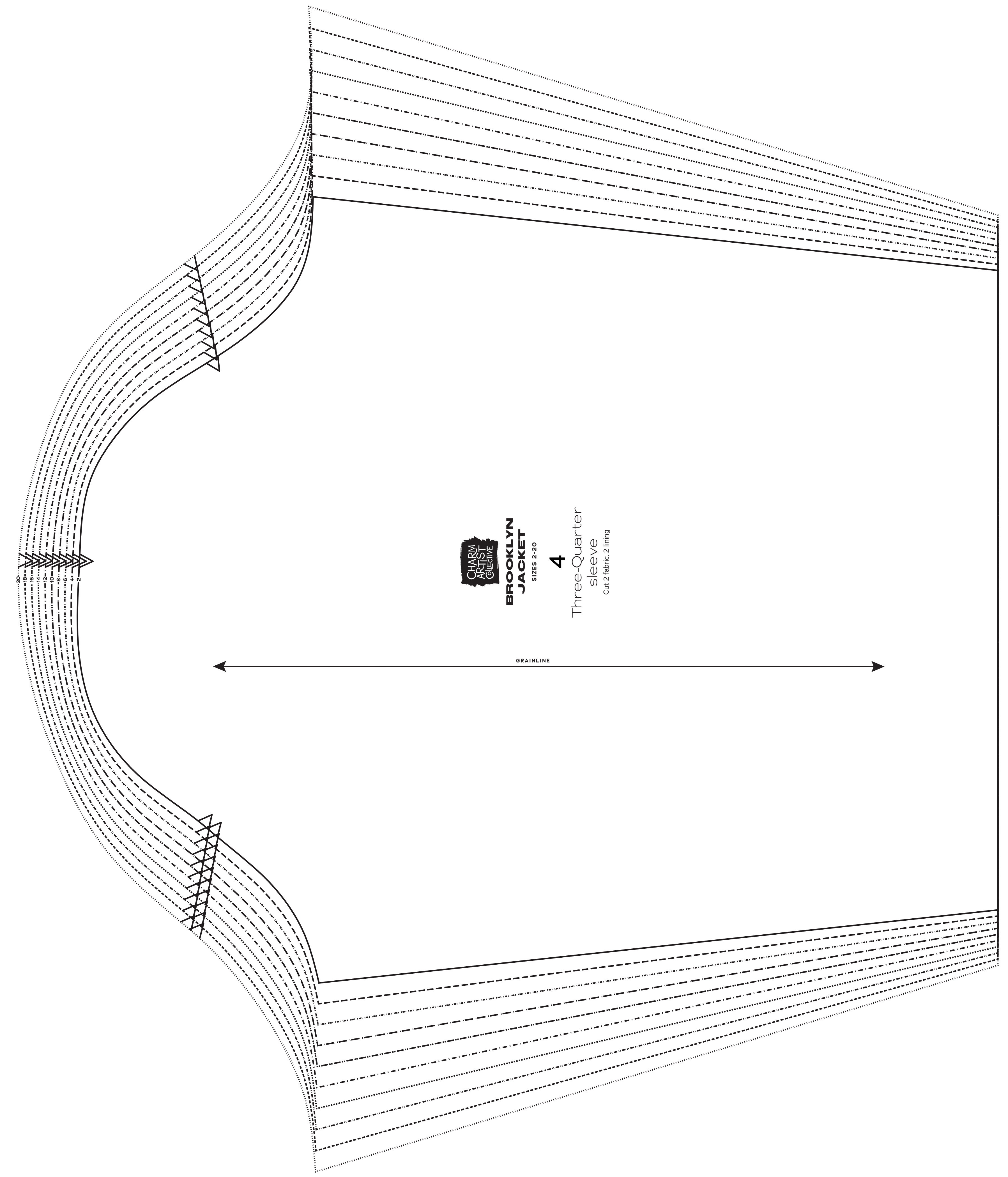
SIZES 2-20 PATTERN SIZE KEY

2	-----
4	-----
6	-----
8	-----
10	-----
12	-----
14	-----
16	-----
18	-----
20	-----



SYMBOL KEY

→	grainline arrow
↔	match point/ placement mark
•	PIVOT POINT



CHARM ARTIST COLLECTIVE
BROOKLYN JACKET

Sizes 2-20
 with cup sizes A-H

1/4 inch (1.5 cm) seam allowances are included on all pattern pieces.

PAGE 5 OF 5

PATTERN PIECE INDEX
 11 Front Lining, B/C Cup
 11 Front Lining, D/DD Cup
 11 Front Lining, F/G Cup
 11 Front Lining, H Cup

SIZES 2-20 PATTERN SIZE KEY
 2 ————
 4 ————
 6 ————
 8 ————
 10 ————
 12 ————
 14 ————
 16 ————
 18 ————
 20 ————

SYMBOL KEY
 grainline arrow
 match point/
 placement mark
 1" test square

© 2020 Charm Patterns by Serika. Distribution and Commercial Use Prohibited.

