

PEGGY BODICE

A PATREON EXCLUSIVE PATTERN

CHARM
ARTIST
COLLECTIVE

© 2022 Charm Patterns by Gertie



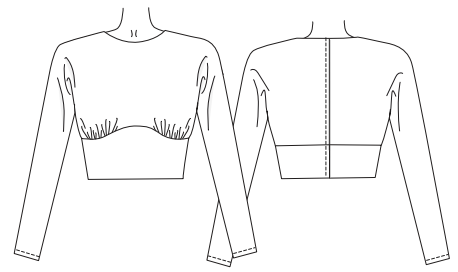
MIX &
MATCH

with the
Lamour Dress,
Liz Dress,
Loretta
Shorts &
more!

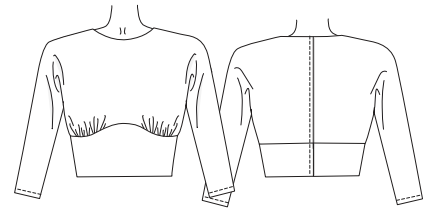




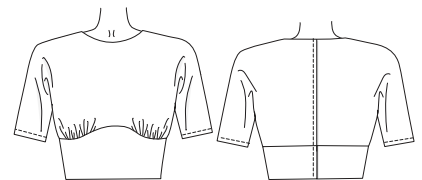
Bodice with long sleeves



Bodice with three-quarter sleeves



Bodice with short sleeves



Detail of gusset



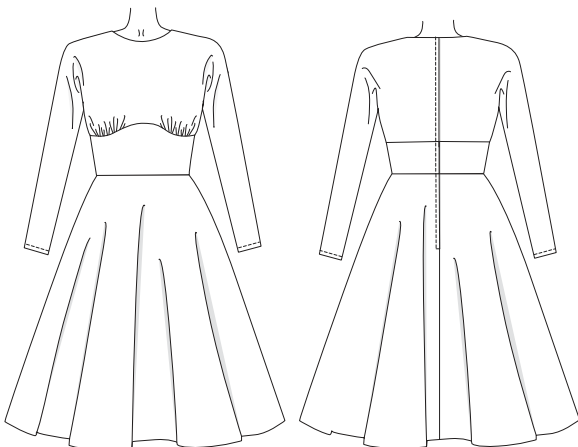
KEY SKILLS

- Sewing a cut-on sleeve
- Adding an underarm gusset
- Perfecting bust gathers

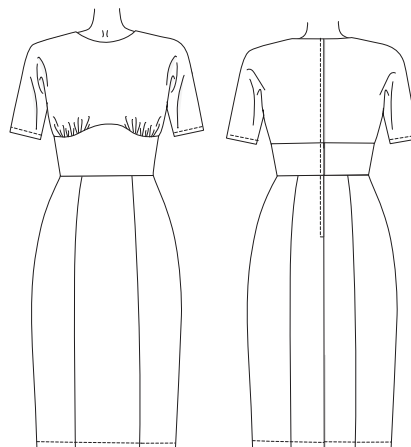
The Peggy Bodice is a classic addition to your mix-and-match wardrobe! This chic bodice with a high jewel neckline is designed to be paired with many of the Charm bottoms to create an elegant dress or jumpsuit. The cut-on sleeves are a true vintage look, and the underarm gussets will give you a wide range of movement—while also increasing your sewing skills. With three sleeve lengths and myriad fabric choices, this will become a four-season staple!

xoxo, *Gertie*

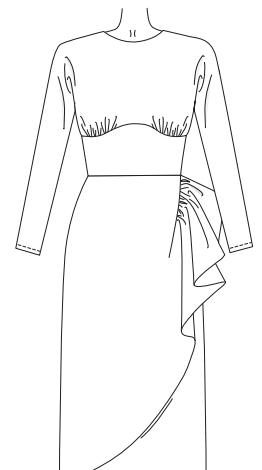
Long Sleeve Peggy Bodice with Charm Circle Skirt



Short Sleeve Peggy Bodice with Wanda Pencil Skirt



Long Sleeve Peggy Bodice with Lamour Sarong Skirt



SIZE CHART

The Peggy Bodice is sized in women's US 2–20 and 18–34, A–H cup sizes. Please use the chart below to pick your size. The High Bust measurement should be taken above your breasts and the Full Bust measurement should be taken at the fullest part of your bustline. Take the waist measurement at the smallest part of your torso. Note that it is best to choose your size by your bust measurements (and add or remove from the side seams at the waist if needed).

Not sure which size range to choose? Read more about our two size ranges [here!](#)

SIZES 2-20	2	4	6	8	10	12	14	16	18	20
High Bust	29 in 73.7 cm	31 in 78.7 cm	33 in 83.8 cm	35 in 88.9 cm	37 in 94 cm	39 in 99 cm	41 in 104.1 cm	43 in 109.2 cm	45 in 114.3 cm	47 in 119.4 cm
Bust A cup	30.5 in 77.5 cm	32.5 in 82.5 cm	34.5 in 87.6 cm	36.5 in 92.7 cm	38.5 in 97.8 cm	40.5 in 102.9 cm	42.5 in 108 cm	44.5 in 113 cm	46.5 in 118.1 cm	48.5 in 123.2 cm
Bust B/C cup	31 in 78.7 cm	33 in 83.8 cm	35 in 88.9 cm	37 in 94 cm	39 in 99 cm	41 in 104.1 cm	43 in 109.2 cm	45 in 114.3 cm	47 in 119.4 cm	49 in 124.5 cm
Bust D/DD cup	32 in 81.3 cm	34 in 86.4 cm	36 in 91.4 cm	38 in 96.5 cm	40 in 101.6 cm	42 in 106.7 cm	44 in 111.8 cm	46 in 116.8 cm	48 in 121.9 cm	50 in 127 cm
Bust F/G cup	33 in 83.8 cm	35 in 88.9 cm	37 in 94 cm	39 in 99 cm	41 in 104.1 cm	43 in 109.2 cm	45 in 114.3 cm	47 in 119.4 cm	49 in 124.5 cm	51 in 129.5 cm
Bust H cup	34 in 86.4 cm	36 in 91.4 cm	38 in 96.5 cm	40 in 101.6 cm	42 in 106.7 cm	44 in 111.8 cm	46 in 116.8 cm	48 in 121.9 cm	50 in 127 cm	52 in 132.1 cm
Waist	24 in 61 cm	26 in 66 cm	28 in 71.1 cm	30 in 76.2 cm	32 in 81.3 cm	34 in 86.4 cm	36 in 91.4 cm	38 in 96.5 cm	40 in 101.6 cm	42 in 106.7 cm
Hips	36 in 91.4 cm	38 in 96.5 cm	40 in 101.6 cm	42 in 106.7 cm	44 in 111.8 cm	46 in 116.8 cm	48 in 121.9 cm	50 in 127 cm	52 in 132.1 cm	54 in 137.2 cm

SIZES 18-34	18	20	22	24	26	28	30	32	34
High Bust	39.5 in 100.3 cm	41.5 in 105.4 cm	43.5 in 110.5 cm	45.5 in 115.6 cm	47.5 in 120.7 cm	49.5 in 125.7 cm	51.5 in 130.8 cm	53.5 in 135.9 cm	55.5 in 141 cm
Bust A/B cup	42.5 in 108 cm	44.5 in 113 cm	46.5 in 118.1 cm	48.5 in 123.2 cm	50.5 in 128.3 cm	52.5 in 133.4 cm	54.5 in 138.4 cm	56.5 in 143.5 cm	58.5 in 148.6 cm
Bust C cup	43 in 109.2 cm	45 in 114.3 cm	47 in 119.4 cm	49 in 124.5 cm	51 in 129.5 cm	53 in 134.6 cm	55 in 139.7 cm	57 in 144.8 cm	59 in 149.9 cm
Bust D/DD cup	44 in 111.8 cm	46 in 116.8 cm	48 in 121.9 cm	50 in 127 cm	52 in 132.1 cm	54 in 137.2 cm	56 in 142.2 cm	58 in 147.3 cm	60 in 152.4 cm
Bust F/G cup	45 in 114.3 cm	47 in 119.4 cm	49 in 124.5 cm	51 in 129.5 cm	53 in 134.6 cm	55 in 139.7 cm	57 in 144.8 cm	59 in 149.9 cm	61 in 154.9 cm
Bust H cup	46 in 116.8 cm	48 in 121.9 cm	50 in 127 cm	52 in 132.1 cm	54 in 137.2 cm	56 in 142.2 cm	58 in 147.3 cm	60 in 152.4 cm	62 in 157.5 cm
Waist	40 in 101.6 cm	42 in 106.7 cm	44 in 111.8 cm	46 in 116.8 cm	48 in 121.9 cm	50 in 127 cm	52 in 132.1 cm	54 in 137.2 cm	56 in 142.2 cm
Hips	48 in 121.9 cm	50 in 127 cm	52 in 132.1 cm	54 in 137.2 cm	56 in 142.2 cm	58 in 147.3 cm	60 in 152.4 cm	62 in 157.5 cm	64 in 162.6 cm

RESOURCES

Here are some of the fabrics I used for the samples and in the video tutorial. There are lots of places to purchase fabric, so this is solely a guide you can use as a reference:



Plum Boiled Wool

Lavender Embroidered Wool Flannel
(from our stash and currently out of stock)

FABRIC NOTES

We recommend light- to medium-weight wovens and stable knits: cottons like broadcloth, chambray, poplin, sateen, shirting, and twill; linen and linen blends; silks with body like dupioni and shantung; wool gabardine and suitings; stable knits like ponte and boiled wool.

For a stable knit, look for fabrics with 10% to 25% stretch in the widthwise grain and zero or very little stretch in the lengthwise grain. (This means that if you take 4 inches of relaxed fabric in your hands and stretch it out, it should stretch to between 4½ to 5 inches). We recommend ponte, boiled wool, and double knits. Wool and wool blends, cotton and cotton blends, cashmere, and rayon/poly/spandex knit blends are all suitable.

MATERIALS & NOTIONS

- Fabric for the bodice and whichever Lamour series bottom you choose
- Thread to match
- 6-in by 12-in (15-cm by 30-cm) rectangle of silk organza
- Lightweight fusible interfacing (look for woven or tricot types)
- 1¼-in-wide fusible stay tape to stabilize the zipper (alternatively, cut a strip from a scrap of fusible interfacing yardage)
- 24-in regular nylon zipper



FIT NOTES

The Peggy Bodice is a fitted bodice that ends at the natural waist and is designed to be paired with Charm's Lamour-series bottoms. The pattern is designed to fit with between 2³/₄ to 3¹/₂ inches (in) (7 to 8.9 cm) of ease in the bust, and 1/2 to 3/4 in (1.3 to 1.9 cm) of ease at the waist. See the charts below for finished garment measurements.

FINISHED MEASUREMENTS

Sizes	2		4		6		8		10		12		14		16		18		20	
Bust A	33.25 in	35.25 in	37.25 in	39.25 in	41.25 in	43.25 in	45.25 in	47.25 in	49.25 in	51.25 in	84.5 cm	89.5 cm	94.6 cm	99.7 cm	104.8 cm	109.9 cm	114.9 cm	120 cm	125.1 cm	130.2 cm
Bust B/C	33.75 in	35.75 in	37.75 in	39.75 in	41.75 in	43.75 in	45.75 in	47.75 in	49.75 in	51.75 in	85.7 cm	90.8 cm	95.9 cm	101 cm	106 cm	111.1 cm	116.2 cm	121.3 cm	126.4 cm	131.4 cm
Bust D/DD	34.75 in	36.75 in	38.75 in	40.75 in	42.75 in	44.75 in	46.75 in	48.75 in	50.75 in	52.75 in	88.3 cm	93.3 cm	98.4 cm	103.5 cm	108.6 cm	113.7 cm	118.7 cm	123.8 cm	128.9 cm	134 cm
Bust F/G	35.75 in	37.75 in	39.75 in	41.75 in	43.75 in	45.75 in	47.75 in	49.75 in	51.75 in	53.75 in	90.8 cm	95.9 cm	101 cm	106 cm	111.1 cm	116.2 cm	121.3 cm	126.4 cm	131.4 cm	136.5 cm
Bust H	36.75 in	38.75 in	40.75 in	42.75 in	44.75 in	46.75 in	48.75 in	50.75 in	52.75 in	54.75 in	93.3 cm	98.4 cm	103.5 cm	108.6 cm	113.7 cm	118.7 cm	123.8 cm	128.9 cm	134 cm	139.1 cm
Waist Seam	24.5 in	26.5 in	28.5 in	30.5 in	32.5 in	34.5 in	36.5 in	38.5 in	40.5 in	42.5 in	62.2 cm	67.3 cm	72.4 cm	77.5 cm	82.6 cm	87.6 cm	92.7 cm	97.8 cm	102.9 cm	108 cm
Sleeve Length (Short)	10.25 in	10.75 in	11.25 in	11.75 in	12.25 in	12.75 in	13.25 in	13.75 in	14.25 in	14.75 in	26 cm	27.3 cm	28.6 cm	29.8 cm	31.1 cm	32.4 cm	33.7 cm	34.9 cm	36.2 cm	37.5 cm
Sleeve Length (3/4)	21.5 in	22 in	22.5 in	23 in	23.5 in	24 in	24.5 in	25 in	25.5 in	26 in	54.6 cm	55.9 cm	57.2 cm	58.4 cm	59.7 cm	61 cm	62.2 cm	63.5 cm	64.8 cm	66 cm
Sleeve Length (Long)	26.13 in	26.25 in	26.38 in	26.5 in	26.63 in	26.75 in	26.88 in	27 in	27.13 in	27.25 in	66.4 cm	66.8 cm	67 cm	67.3 cm	67.6 cm	67.9 cm	68.3 cm	68.6 cm	68.9 cm	69.2 cm
Bicep	14 in	14.5 in	15 in	15.5 in	16 in	16.5 in	17 in	17.5 in	18 in	18.5 in	35.6 cm	36.8 cm	38.1 cm	39.4 cm	40.6 cm	41.9 cm	43.2 cm	44.5 cm	45.7 cm	47 cm

PATTERN PIECES

1. Bodice Front

Cut 1 fabric on fold

2. Bodice Back

Cut 2 fabric

3. Midriff Front

Cut 1 fabric on fold

4. Midriff Back

Cut 2 fabric

5. Front Neck Facing

Cut 1 fabric on fold,
1 interfacing on fold

6. Back Neck Facing

Cut 2 fabric, 2 interfacing

7. Front Underarm Gusset

Cut 2 fabric

8. Back Underarm Gusset

Cut 2 fabric



Sizes	18		20		22		24		26		28		30		32		34	
Bust A/B	46 in	48 in	50 in	52 in	54 in	56 in	58 in	60 in	62 in	116.8 cm	121.9 cm	127 cm	132.1 cm	137.2 cm	142.2 cm	147.3 cm	152.4 cm	157.5 cm
Bust C	46.5 in	48.5 in	50.5 in	52.5 in	54.5 in	56.5 in	58.5 in	60.5 in	62.5 in	118.1 cm	123.2 cm	128.3 cm	133.4 cm	138.4 cm	143.5 cm	148.6 cm	153.7 cm	158.8 cm
Bust D/DD	47.5 in	49.5 in	51.5 in	53.5 in	55.5 in	57.5 in	59.5 in	61.5 in	63.5 in	120.7 cm	125.7 cm	130.8 cm	135.9 cm	141 cm	146.1 cm	151.1 cm	156.2 cm	161.3 cm
Bust F/G	48.5 in	50.5 in	52.5 in	54.5 in	56.5 in	58.5 in	60.5 in	62.5 in	64.5 in	123.2 cm	128.3 cm	133.4 cm	138.4 cm	143.5 cm	148.6 cm	153.7 cm	158.8 cm	163.8 cm
Bust H	49.5 in	51.5 in	53.5 in	55.5 in	57.5 in	59.5 in	61.5 in	63.5 in	65.5 in	125.7 cm	130.8 cm	135.9 cm	141 cm	146.1 cm	151.1 cm	156.2 cm	161.3 cm	166.4 cm
Waist Seam	40.75 in	42.75 in	44.75 in	46.75 in	48.75 in	50.75 in	52.75 in	54.75 in	56.75 in	103.5 cm	108.6 cm	113.7 cm	118.7 cm	123.8 cm	128.9 cm	134 cm	139.1 cm	144.1 cm
Sleeve Length (Short)	19.5 in	20 in	20.5 in	21 in	21.5 in	22 in	22.5 in	23 in	23.5 in	49.5 cm	50.8 cm	52.1 cm	53.3 cm	54.6 cm	55.9 cm	57.2 cm	58.4 cm	59.7 cm
Sleeve Length (3/4)	22.38 in	22.5 in	22.63 in	22.75 in	22.88 in	23 in	23.13 in	23.25 in	23.38 in	56.8 cm	57.2 cm	57.5 cm	57.8 cm	58.1 cm	58.4 cm	58.8 cm	59.1 cm	59.4 cm
Sleeve Length (Long)	26.63 in	26.75 in	26.88 in	27 in	27.13 in	27.25 in	27.38 in	27.5 in	27.63 in	67.6 cm	67.9 cm	68.3 cm	68.6 cm	68.9 cm	69.2 cm	69.5 cm	69.9 cm	70.2 cm
Bicep	16.5 in	17 in	17.5 in	18 in	18.5 in	19 in	19.5 in	20 in	20.5 in	41.9 cm	43.2 cm	44.5 cm	45.7 cm	47 cm	48.3 cm	49.5 cm	50.8 cm	52.1 cm

REQUIRED YARDAGE & CUTTING LAYOUTS

- Cutting layouts for this pattern are labeled by letters A through G and noted in each yardage table.
- All pattern pieces are shown in a “without nap” layout. You may need additional yardage for directional prints, stripes, plaids, or to accommodate a crosswise knit fabric stretch.
- Note which layouts are cut on a crossgrain (indicated by a vertical fold in the layout), which will affect the direction of any stripes.

Long Sleeve Top

(1, 2, 3, 4, 5, 6, 7, 8)

	Sizes 2-10	Sizes 12-20
45 in	1¾ yds 1.6 m A	1¾ yds 1.6 m A
60 in	1⅞ yds 1 m B	1⅞ yds 1 m B

	Sizes 18-24	Sizes 26-34
45 in	1⅞ yd 1.7 m A	1⅞ yd 1.7 m A
60 in	1¼ yds 1.1 m B	1½ yds 1.4 m B

¾ Sleeve Top

(1, 2, 3, 4, 5, 6, 7, 8)

	Sizes 2-10	Sizes 12-20
45 in	1½ yds 1.4 m A	1⅝ yds 1.5 m A
60 in	1⅞ yds 1 m B	1⅞ yds 1 m B

	Sizes 18-24	Sizes 26-34
45 in	1⅝ yds 1.5 m A	1⅞ yds 1.7 m A
60 in	1¼ yds 1.1 m B	1½ yds 1.4 m B

Cut pieces 1 and 2 at ¾-sleeve cutting line.

Short Sleeve Top

(1, 2, 3, 4, 5, 6, 7, 8)

	Sizes 2-10	Sizes 12-20
45 in	1 yd .9 m C	1¼ m 1.1 m D
60 in	⅞ yd .8 m E	1 yd .9 m E

	Sizes 18-24	Sizes 26-34
45 in	1½ yds 1.4 m F	1⅝ yds 1.5 m F
60 in	1⅞ yds 1 m E	1⅜ yds 1.3 m E

Cut pieces 1 and 2 at short-sleeve cutting line.



KEY TO LAYOUTS

- Right side of pattern piece
- Wrong side of pattern piece

Interfacing (5, 6)

	All sizes
60 in	¼ yd .2 m G

SEWING INSTRUCTIONS

BEFORE SEWING

Transferring marks: Use dressmaker’s tracing paper and a tracing wheel to transfer all pattern markings to the wrong side (WS) of your fabric. Mark pattern notches by snipping into the seam allowance with the tip of your scissors.

Interfacing: The neck facings need to be stabilized with fusible interfacing prior to sewing. Follow the interfacing cutting instructions on the pattern pieces. Apply fusible interfacing to the WS of the fabric, using a press cloth and steam. Do not rub your iron back and forth; lift it up and press it down for several seconds at a time until interfacing is fully adhered.

Seam Finishing: If finishing seams with a serger, serge the following seam allowances (without trimming the edges) before construction. Knits typically do not fray, so seam finishing is optional.

- Sleeve/side seams on Bodice Front and Backs
- Side seams on Midriff Front and Backs
- Center back seams on Bodice Backs
- Lower edge of facings
- Notched edge of Underarm Gussets



MIX & MATCH

THIS PATTERN IS PART OF THE LAMOUR SERIES

The Peggy Top is an alternative bodice for any of the Lamour-series bottoms (Lamour and Liz Dresses, Wanda Skirt, Charm Circle and Double Circle Skirts, Loretta Shorts, and more) to create a dress or romper. Sew the bottom of your choice following that pattern’s instructions, omitting the waistband and/or waist facing. See the full list of mix-and-match options for this series at CharmPatterns.com/mix-and-match.

NOTES

- 5/8-in (1.5 cm) seam allowances are included on all pattern pieces, except where otherwise noted.
- For the short sleeve or three-quarter sleeve versions, cut the Bodice Front and Bodice Back at the appropriate sleeve length cutting line.

TIPS

- If you don't have a serger, consider using a zigzag or overlock stitch on your sewing machine.
- If you find it difficult to see notches after serging, you may wish to mark them with chalk, thread tacks, or another marking tool.
- If sewing with a stable knit, use a stretch, ballpoint, or jersey needle to avoid skipped stitches.
- Press your stitching lines after every step, even when not specified in the instructions. You do not need to press basting or gathering stitches.

SEW THE BODICE

Bodice

1. Staystitch neckline: on Bodice Front (1), using a 1/2-in (1.3 cm) seam allowance, staystitch front neckline from each shoulder, overlapping your lines of stitching at center front. Repeat on Bodice Backs (2).

2. Create slash for underarm gusset: check that the slash lines are well-marked and visible on right side (RS) of bodice. Cut a 3-in by 6-in (7.6-cm by 15-cm) rectangle of on-grain organza and pin it over the underarm gusset slash and stitching lines on RS of bodice front. Sew along the stitching lines, stitching through the bodice and the organza. For a crisp point, take one stitch across the point of the stitching line, instead of pivoting. Cut along slash line. Flip organza and seam allowances to WS and press, making sure organza does not show from RS. Repeat for bodice backs.

3. Sew underarm gusset: pin Front Underarm Gusset (7) to bodice front, placing the gusset underneath the slash created in the last step, matching circles. (The RS of the gusset will be facing the WS of the bodice.) Edgestitch the bodice front along the fold of the slash, securing the gusset in place underneath and pivoting at innermost circle. Finish gusset and organza seam

allowances by trimming with pinking shears or by serging. Repeat for Back Underarm Gussets (8) and bodice backs.

4. Gather bodice front: using a 4-mm to 5-mm-long gathering stitch, sew two lines of stitching within the seam allowance between the notches on bodice front. Sew the first line of gathering stitches 1/2 in (1.3 cm) from the raw edge and the second line 1/4 in (6 mm) from the raw edge. Do not backstitch to lock your stitches but leave thread tails. Pull up bobbin threads to gather. Gathers will be concentrated between notches.

5. Sew bodice front to midriff: staystitch bodice lower edge between sets of gathering stitches, using a 1/2-in seam allowance. Pin bodice front to Midriff Front (3), RS together, matching notches and clipping to staystitching at bodice center front to match curve of midriff. Distribute gathers on bodice front evenly between notches. Stitch. Grade seam allowances and finish as desired. Press seam allowances toward bodice front.

6. Sew bodice back to midriff: pin bodice backs to Midriff Backs (4), RS together and matching notches. Stitch. Grade seam allowances and finish as desired. Press seam allowances toward bodice back.

7. Sew underarm and side seam: pin front unit to back unit at side seam and underarm sleeve seam, RS together, matching notches, gusset seams, and midriff seams. Stitch side and underarm seam from waist to sleeve hem. Reinforce underarm seam by stitching within the seam allowance 1/8 in (3 mm) from seamline. Press seam allowances open.

8. Sew shoulder and sleeve seam: staystitch the bodice front from the neckline to the upper sleeve notch, using a 1/2-in (1.3 cm) seam allowance. Clip into the seam allowance every 1/2 in. Pin bodice front to bodice back at upper sleeve seam, RS together, matching notches and easing the bodice front as needed. Stitch. Press seam allowances open. NOTE: some sizes will require more clipping and easing than others.

Facing

1. Sew facings: pin Front Neck Facing (5) to Back Neck Facings (6) at shoulder seams, RS together, matching

notches. Stitch and press seam allowances open.

2. Prepare to attach facing with clean finish

method: pin facing to outer bodice around neckline, RS together. At zipper opening's top edge, working with bodice back facing up, fold seam allowances as follows: on right half of opening (the underlap), fold both seam allowances to facing's WS 1/2 in (1.3 cm). The facing seam allowance is nested inside the outer fabric seam allowance. On opening's left half (the overlap), fold facing seam allowance to WS 7/8 in (2.2 cm). Fold outer fabric seam allowance to WS 5/8 in (1.5 cm). The seam allowances nest inside each other with a 1/4-in (6 mm) gap between the two. Folding seam allowances this way ensures facing is finished neatly around lapped zipper at neckline.

3. Sew facing to bodice: stitch around neckline, starting at one folded edge and ending at the other folded edge. Grade seam allowances so those on the bodice are widest and those on the facing are narrower. Clip into curves every 1/2 in (1.3 cm).

4. Understitch neckline: with facing opened out and seam allowances underneath, stitch along facing RS 1/8 in (3 mm) from the seamline, catching seam allowances in stitching. Press facing to inside of bodice, rolling seamline slightly to WS so it is hidden.

Garment Assembly and Zipper

Follow the instructions on your chosen Lamour-series pattern to sew the skirt, pants, or shorts without a waistband or waist facing. Join the bodice to the skirt or shorts at the waistline and press waistline seam toward the bodice. Insert zipper and finish the garment according to the pattern instructions.

Bodice Finishing

1. Attach facing to zipper: turn under seam allowances of facing at zipper opening and pin to zipper tape, tucking in upper ends of zipper tape and enclosing between facing and dress/romper. Slipstitch in place by hand.

2. Hem the sleeves: finish raw edge of sleeve hem by desired method. Fold and press the edge under 5/8 in (1.5 cm). Topstitch 1/2 in (1.3 cm) from fold. Press hem flat.

Enjoy your elegant new Peggy Bodice!

PATTERN PIECE LOCATION GUIDE

Here is a list to help you locate the pattern pieces on the letter-size tiled pages and AO pattern sheets. The tiled pieces and AO sheets are included as separate pdf files as part of this digital pattern.

SIZES 2-20

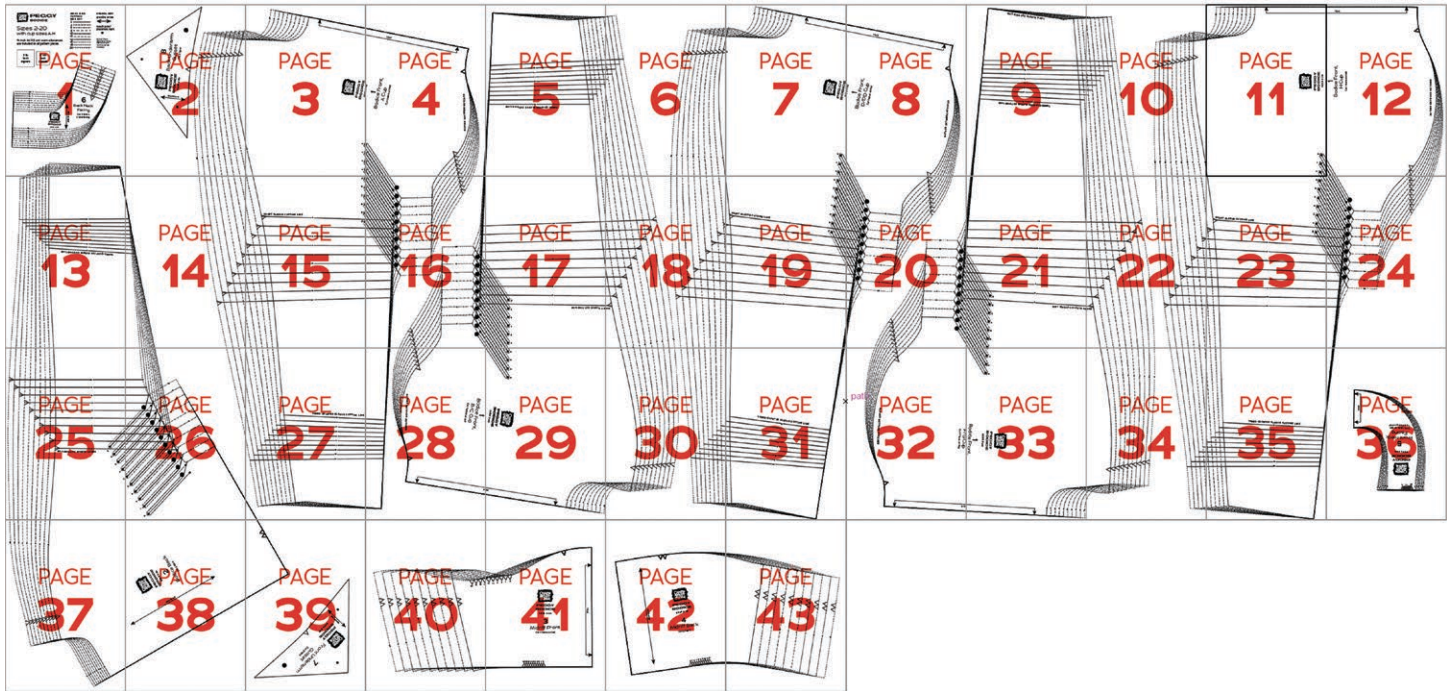
PC#	Piece Name	Tiled	AO
1	Bodice Front, A Cup	2-4, 14-16, 26-28	1
1	Bodice Front, B/C Cup	4-6, 16-18, 28-30	1
1	Bodice Front, D/DD Cup	6-8, 18-20, 30-31	1
1	Bodice Front, F/G Cup	9-10, 20-22, 32-34	2
1	Bodice Front, H Cup	10-12, 22-24, 34-36	2
2	Bodice Back	1, 13-14, 25-27, 37-39	2
3	Midriff Front	40-41	2
4	Midriff Back	42-43	1
5	Front Neck Facing	36	2
6	Back Neck Facing	1	2
7	Front Underarm Gusset	39	1
8	Back Underarm Gusset	2	2

SIZES 18-34

PC#	Piece Name	Tiled	AO
1	Bodice Front, A/B Cup	2-4, 15-17, 28-30	1
1	Bodice Front, C Cup	4-6, 17-19, 30-32	1
1	Bodice Front, D/DD Cup	6-9, 19-22, 33-34	2
1	Bodice Front, F/G Cup	9-11, 21-24, 34-37	2
1	Bodice Front, H Cup	11-13, 24-26, 37-39	3
2	Bodice Back	1, 14-15, 27-29, 40-42	3
3	Midriff Front	42-44	1
4	Midriff Back	44-46	1
5	Front Neck Facing	39	1
6	Back Neck Facing	1	2
7	Front Underarm Gusset	33	2
8	Back Underarm Gusset	6	2

TILING MAPS

SIZES 2-20



SIZES 18-34



HOW TO USE THIS PATTERN

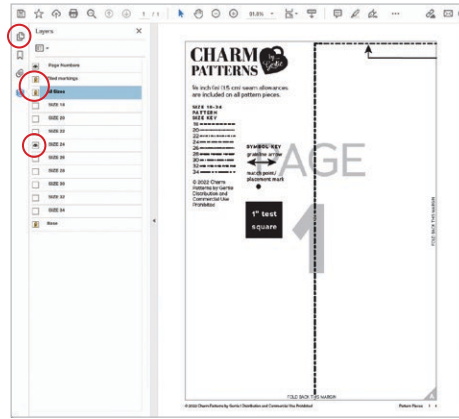
The pattern pieces are tiled so you can print them on Letter (8½" x 11") or A4 size paper. You can also send the AO pattern sheet PDF to a local or online printer (like www.pdfplotting.com) to print on large sheets (36" x 48" for U.S. or AO for international).

This pattern includes size layers. To get the best results, open either the Tiled or AO pattern pieces PDF in [Acrobat Reader](#).

Open the Layers Palette (View>Show/Hide>Navigation Panes>Layers) and hide all of the layer(s) except for the ones you want to print by clicking on the eye icon.

The All Sizes and Tiled Markings layers have general pattern information and will always print.

You may choose to turn off the Page Numbers layer. The page numbers will still appear at the bottom of each page in the footer.



WORKING WITH THE TILED PIECES

Go to File>Print and change the page range to the pages you need for the pieces you've chosen (see Pattern Pieces Printing Index). Make sure the Page Sizing settings to 100% or Actual Size. Test this after printing by measuring the 1" test box on the first page of the pattern pieces.

Cut apart any pattern pieces that share a page, then fold back the page margins on each page as marked.

Tape the pages together, butting up the folded page edges with the gray margin lines, matching up the letters in gray diamonds.

MORE FROM GERTIE

On Instagram: Stay in the loop and get inspired.

On YouTube: Learn beginner and advanced sewing skills and techniques through my tutorials, watch episodes of my Gertie's World series, and join regular live streams.

On Patreon: Access monthly patterns and tutorial videos.

At CharmPatterns.com: Shop my sewing patterns and accessories.





MIX & MATCH

THE LAMOUR SERIES

The following patterns can be interchanged with the Peggy Bodice.

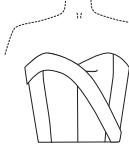
[Find more at CharmPatterns.com/mix-and-match](http://CharmPatterns.com/mix-and-match)



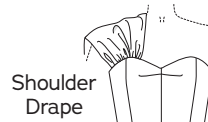
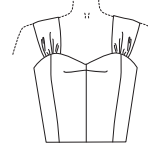
Strapless Bodice



Bodice Sash

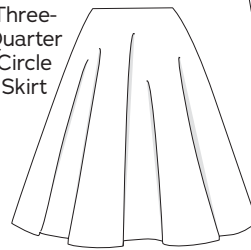


Gathered Shoulder Straps

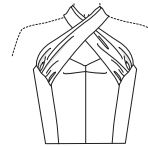
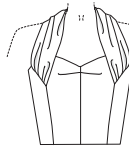


Shoulder Drape

Three-Quarter Circle Skirt



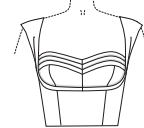
Three-Way Halter Strap



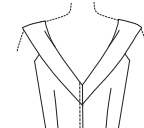
Sarong Skirt



Bodice with Shelf Bust and Pleated Bra Inset



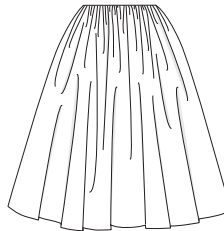
V-Neck Back



Waist Tie with optional hand-sewn fringe ends



Full Gathered Skirt



Bodice with Bra Petal, Bra Upper and Halter Strap



Full Gathered Skirt with Straight or Basque Waist

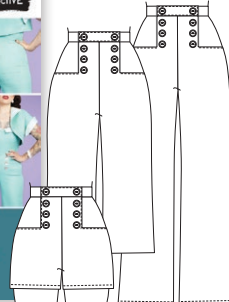


Circle Skirt

Double Circle Skirt



Pants in 3 lengths: Full, Cropped, Short



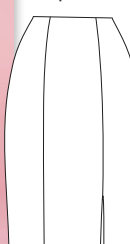
Shorts with Pockets



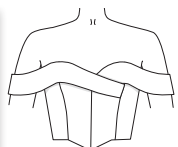
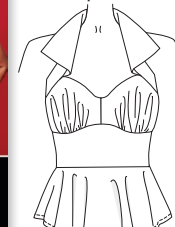
Foldover neckline for Lamour Bodice



Skirt with thigh slit options



Halter Top with Collar, Shoulder Straps and Peplum



Bodice with Shoulder Bands Basque or Straight Waist

