



JOAN WIGGLE DRESS

Sizes 18-34
with cup sizes A-H

5/8 inch (1.5 cm) seam allowances
are included on all pattern pieces.

PAGE 1 OF 4

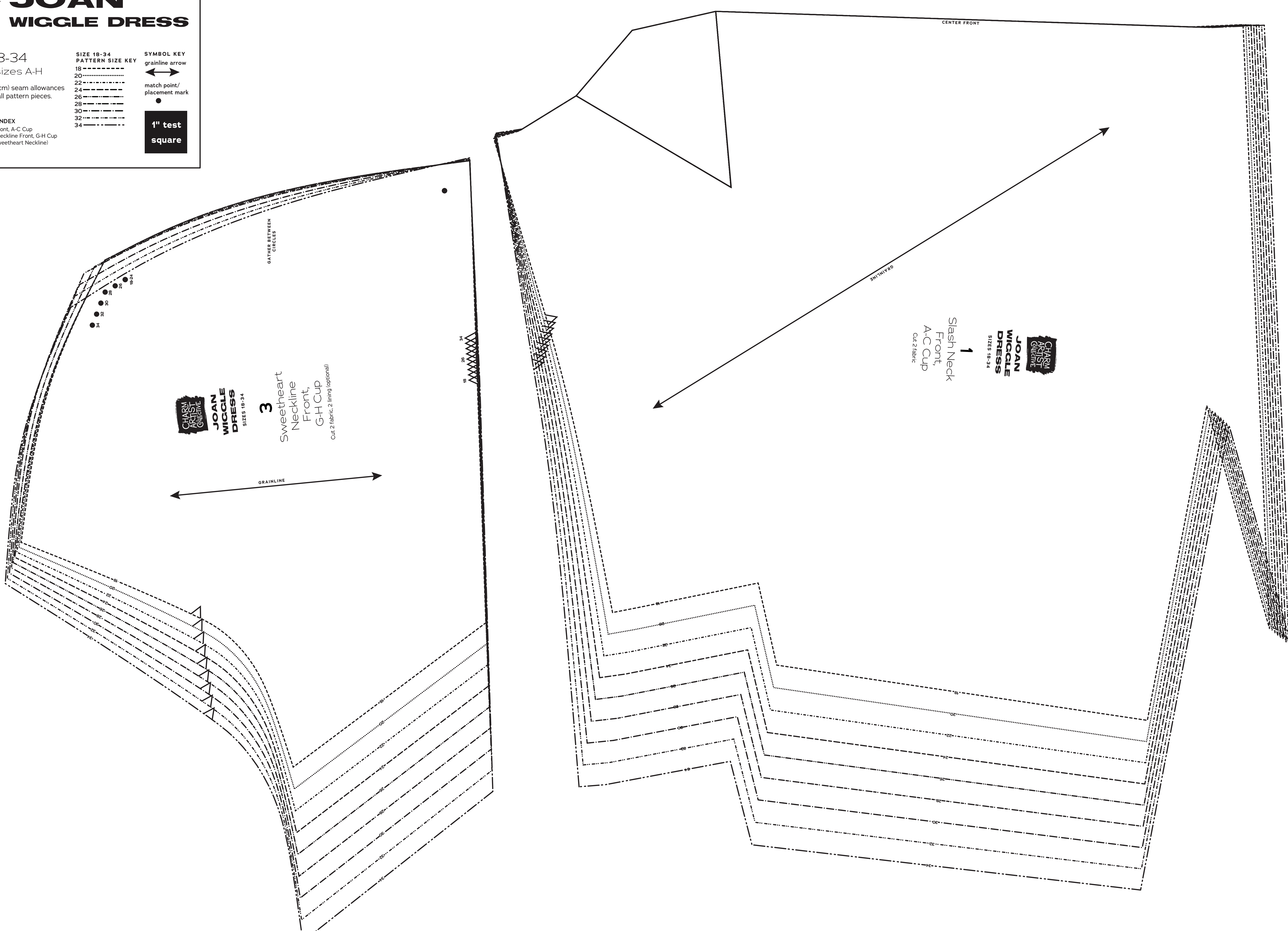
PATTERN PIECE INDEX

- 1 Slash Neck Front, A-C Cup
- 3 Sweetheart Neckline Front, G-H Cup
- 5 Sleeve (for Sweetheart Neckline)

**SIZE 18-34
PATTERN SIZE KEY**

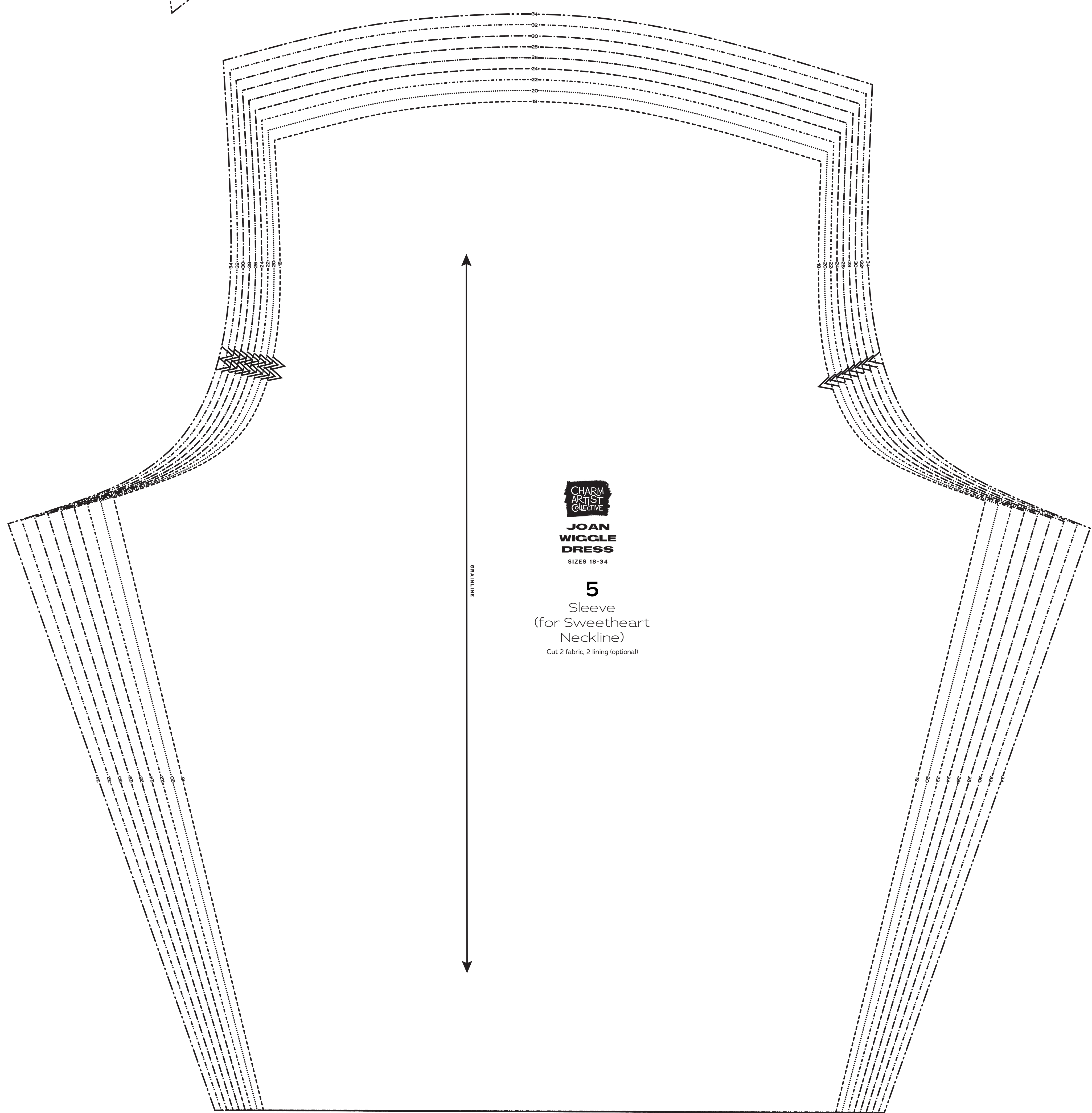
18	-----
20	-----
22	-----
24	-----
26	-----
28	-----
30	-----
32	-----
34	-----

SYMBOL KEY
 grainline arrow
 match point/
 placement mark
 •



CHARM ARTIST COLLECTIVE
JOAN WIGGLE DRESS
 SIZES 18-34
3
 Sweetheart Neckline Front, G-H Cup
 Cut: 2 fabric, 2 lining (optional)

CHARM ARTIST COLLECTIVE
JOAN WIGGLE DRESS
 SIZES 18-34
1
 Slash Neck Front, A-C Cup
 Cut: 3 fabric



CHARM ARTIST COLLECTIVE
JOAN WIGGLE DRESS
 SIZES 18-34
5
 Sleeve (for Sweetheart Neckline)
 Cut: 2 fabric, 2 lining (optional)



JOAN WIGGLE DRESS

Sizes 18-34
with cup sizes A-H

5/8 inch (1.5 cm) seam allowances
are included on all pattern pieces.

PAGE 2 OF 4

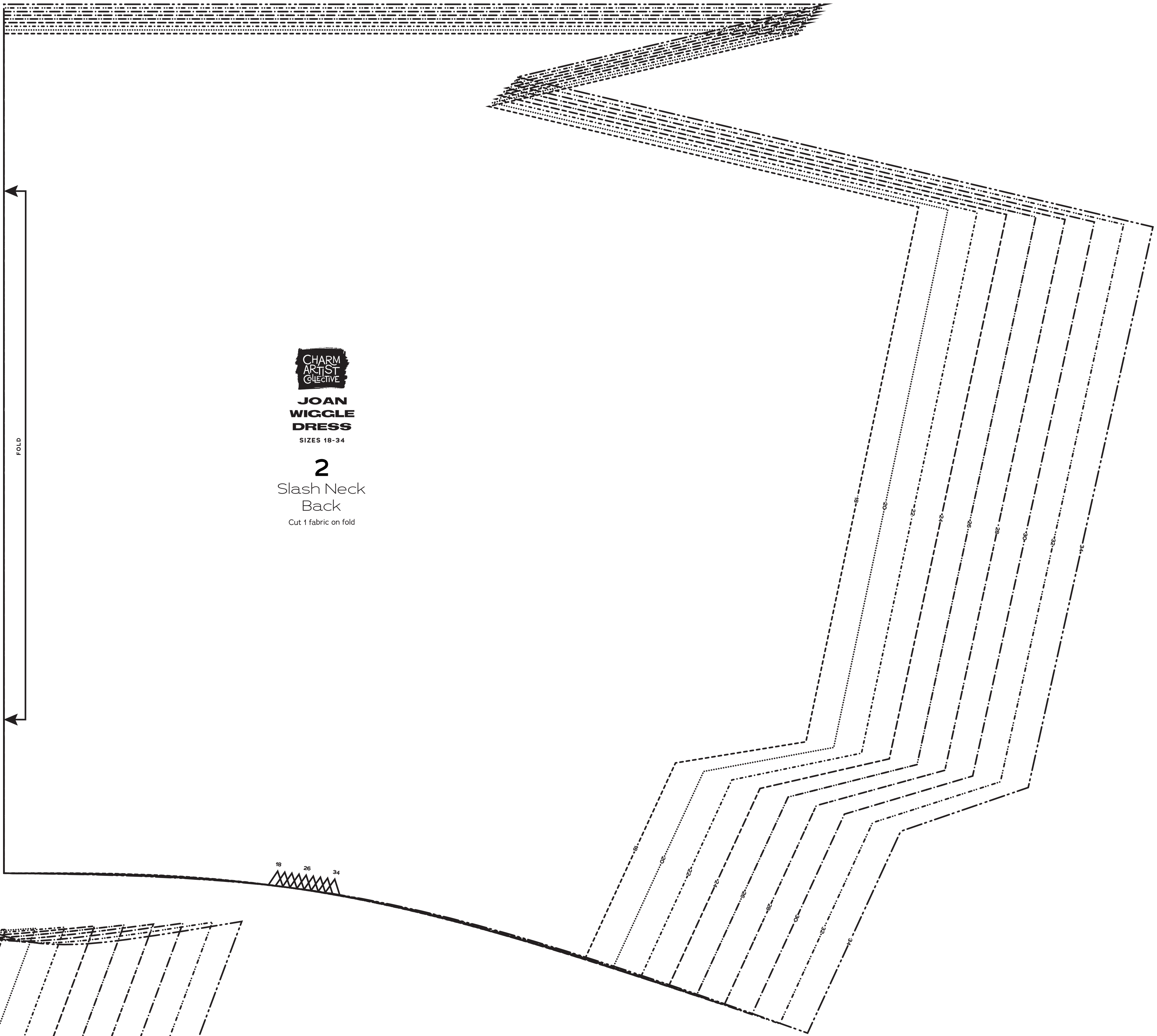
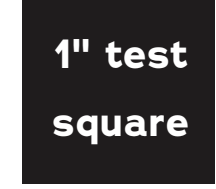
- PATTERN PIECE INDEX**
- 1 Slash Neck Front, G-H Cup
 - 2 Slash Neck Back
 - 3 Sweetheart Neckline Front, A-C Cup
 - 4 Sweetheart Neckline Back

**SIZE 18-34
PATTERN SIZE KEY**

18	-----
20	-----
22	-----
24	-----
26	-----
28	-----
30	-----
32	-----
34	-----

SYMBOL KEY

- grainline arrow
- match point/
placement mark
- 4" test
square



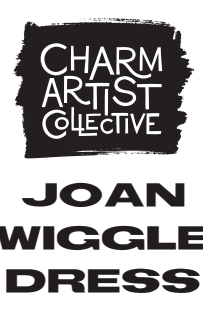
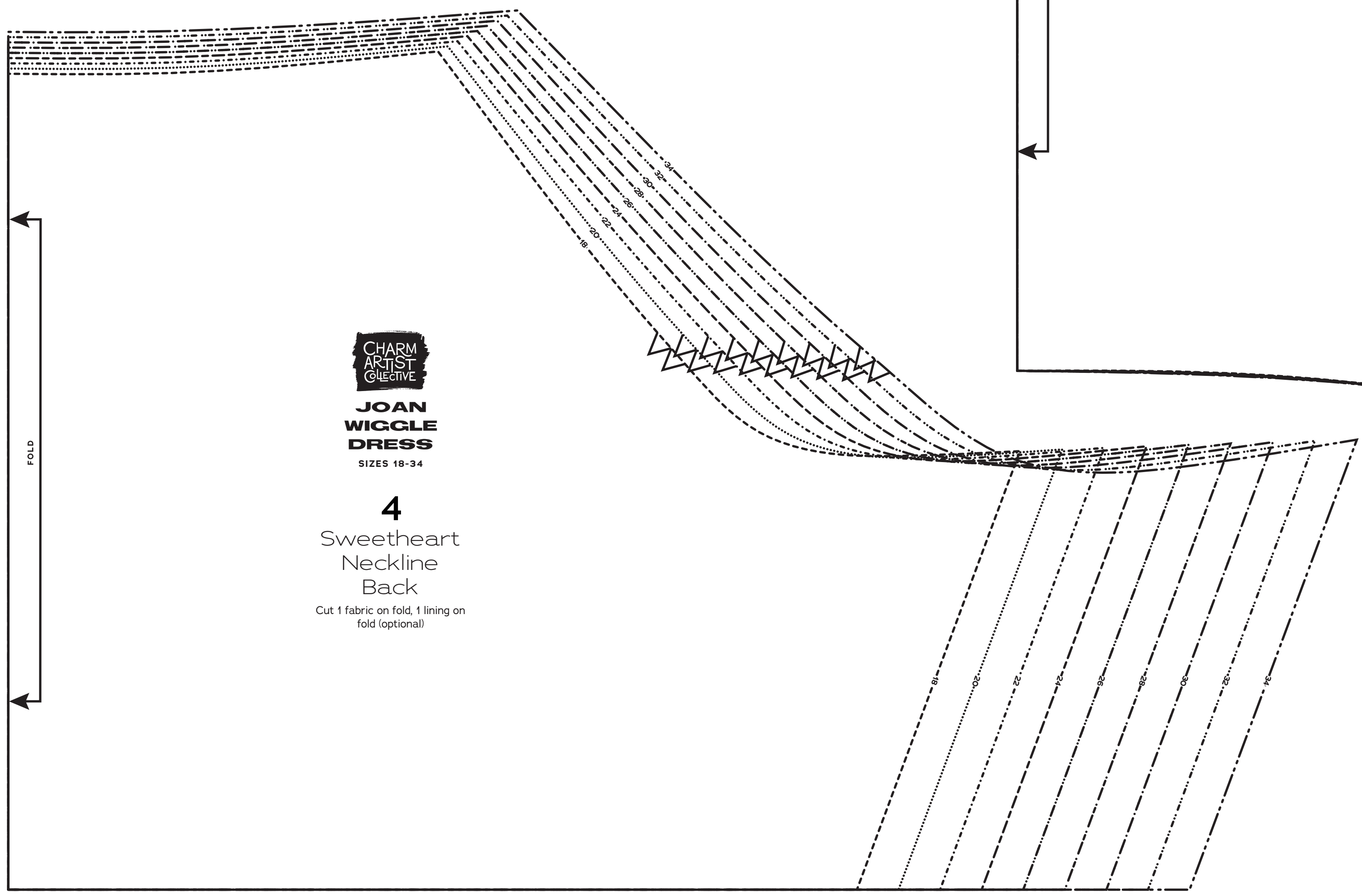
JOAN WIGGLE DRESS

SIZES 18-34

2

Slash Neck Back

Cut 1 fabric on fold



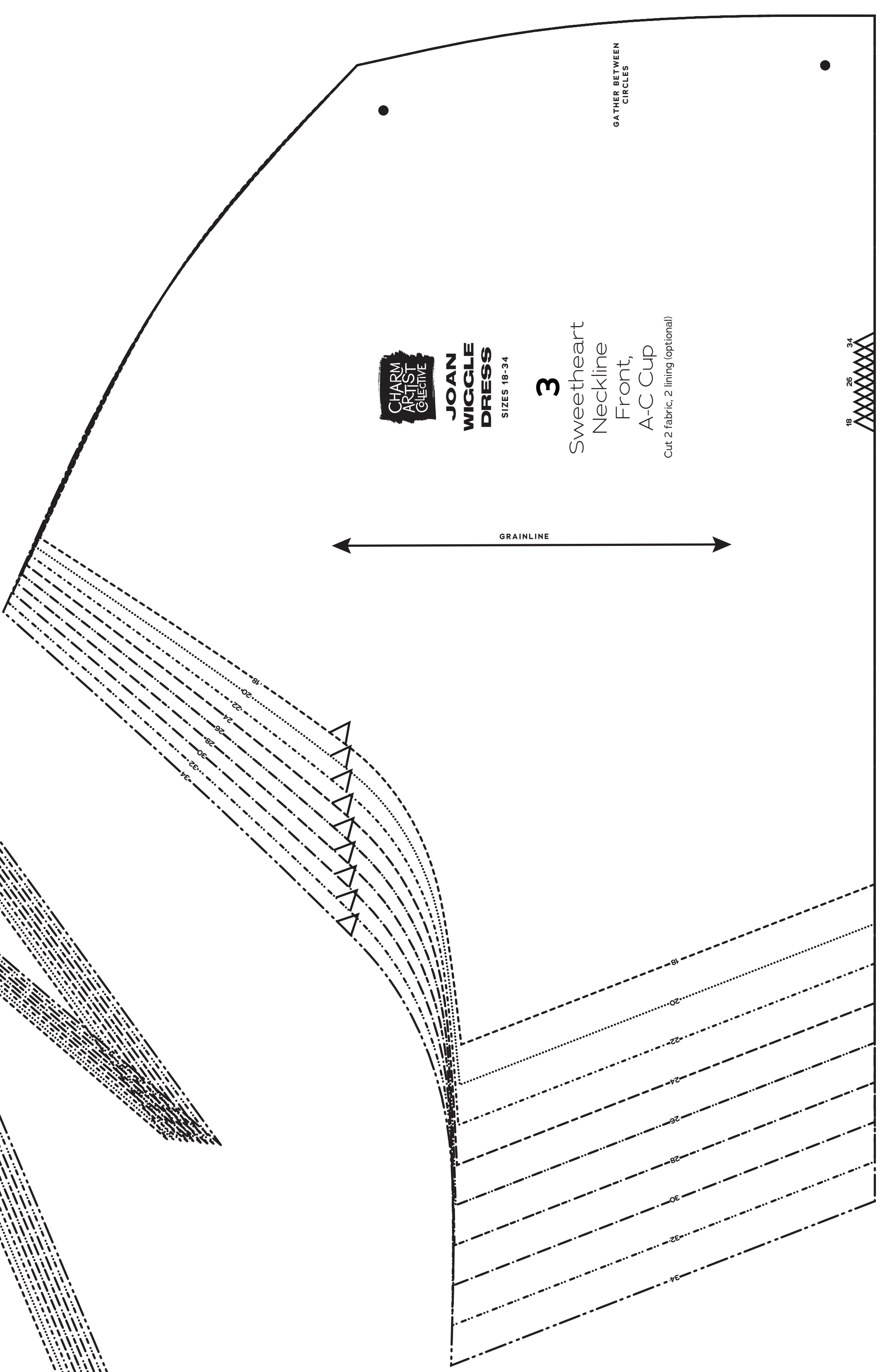
JOAN WIGGLE DRESS

SIZES 18-34

4

Sweetheart Neckline Back

Cut 1 fabric on fold, 1 lining on fold (optional)



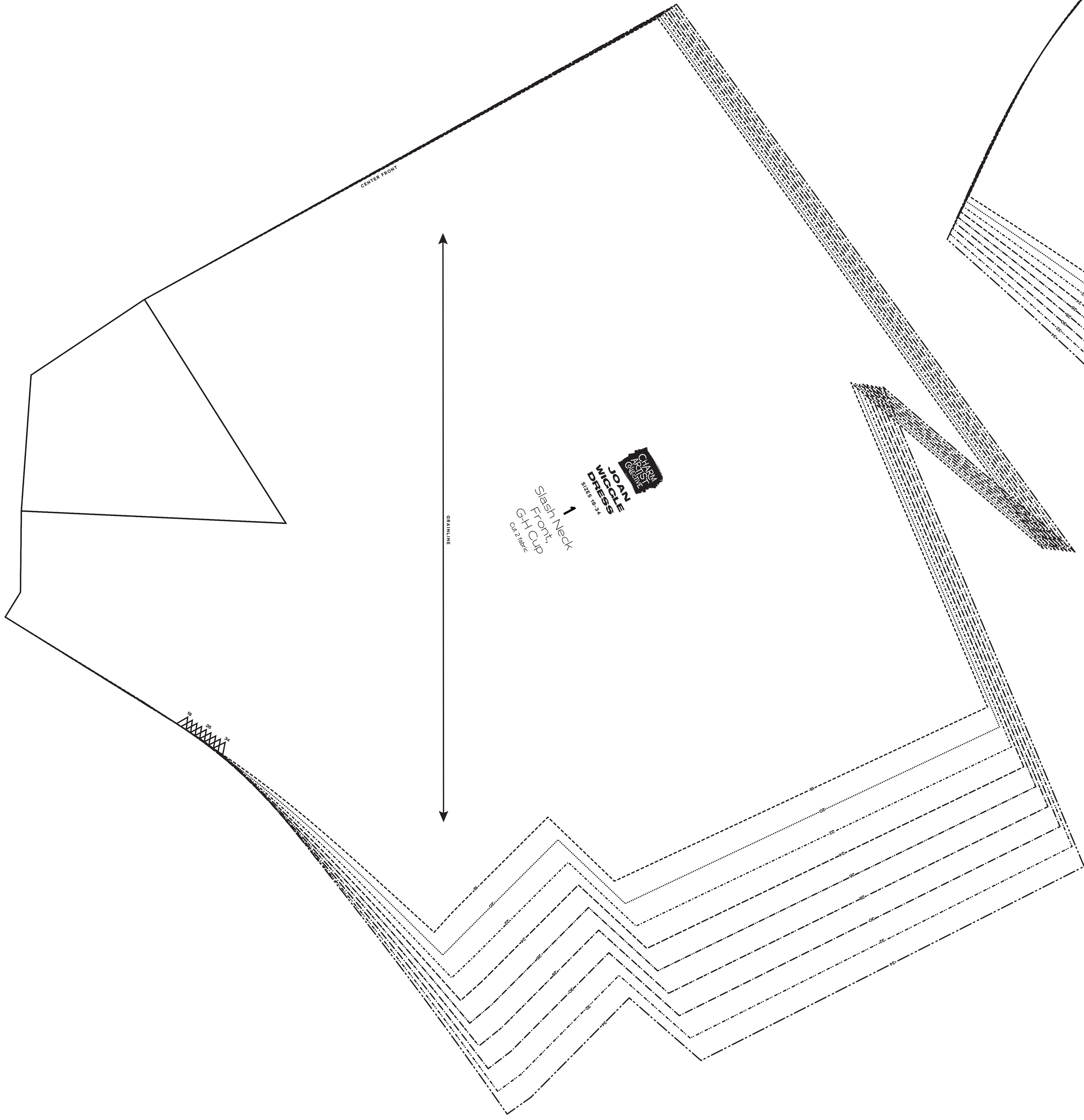
JOAN WIGGLE DRESS

SIZES 18-34

3

Sweetheart Neckline Front, A-C Cup

Cut 2 fabric, 2 lining (optional)



JOAN WIGGLE DRESS

SIZES 18-34

1

Slash Neck Front, G-H Cup

Cut 2 fabric



JOAN WIGGLE DRESS

Sizes 18-34
with cup sizes A-H

5/8 inch (1.5 cm) seam allowances
are included on all pattern pieces.

PAGE 3 OF 4

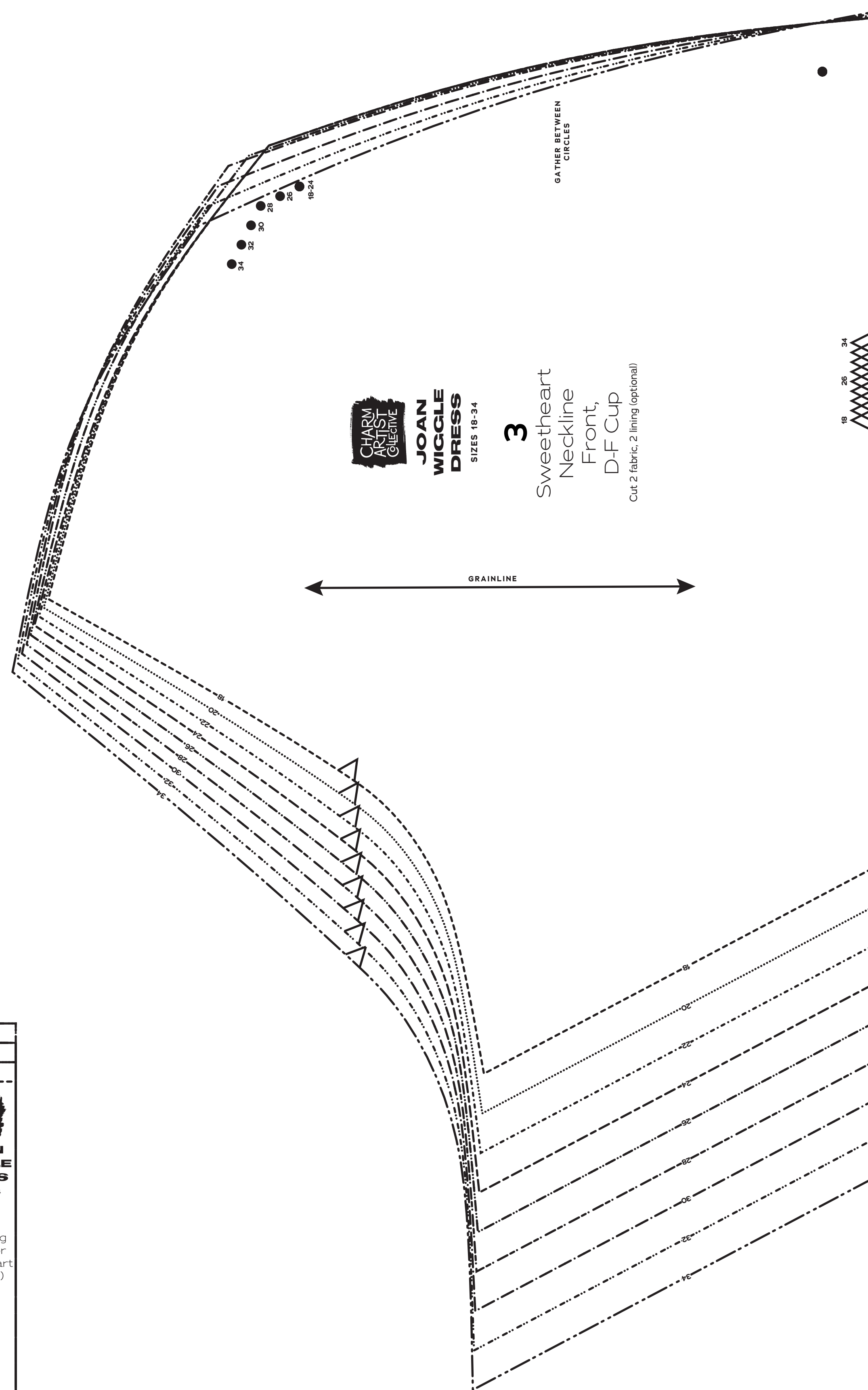
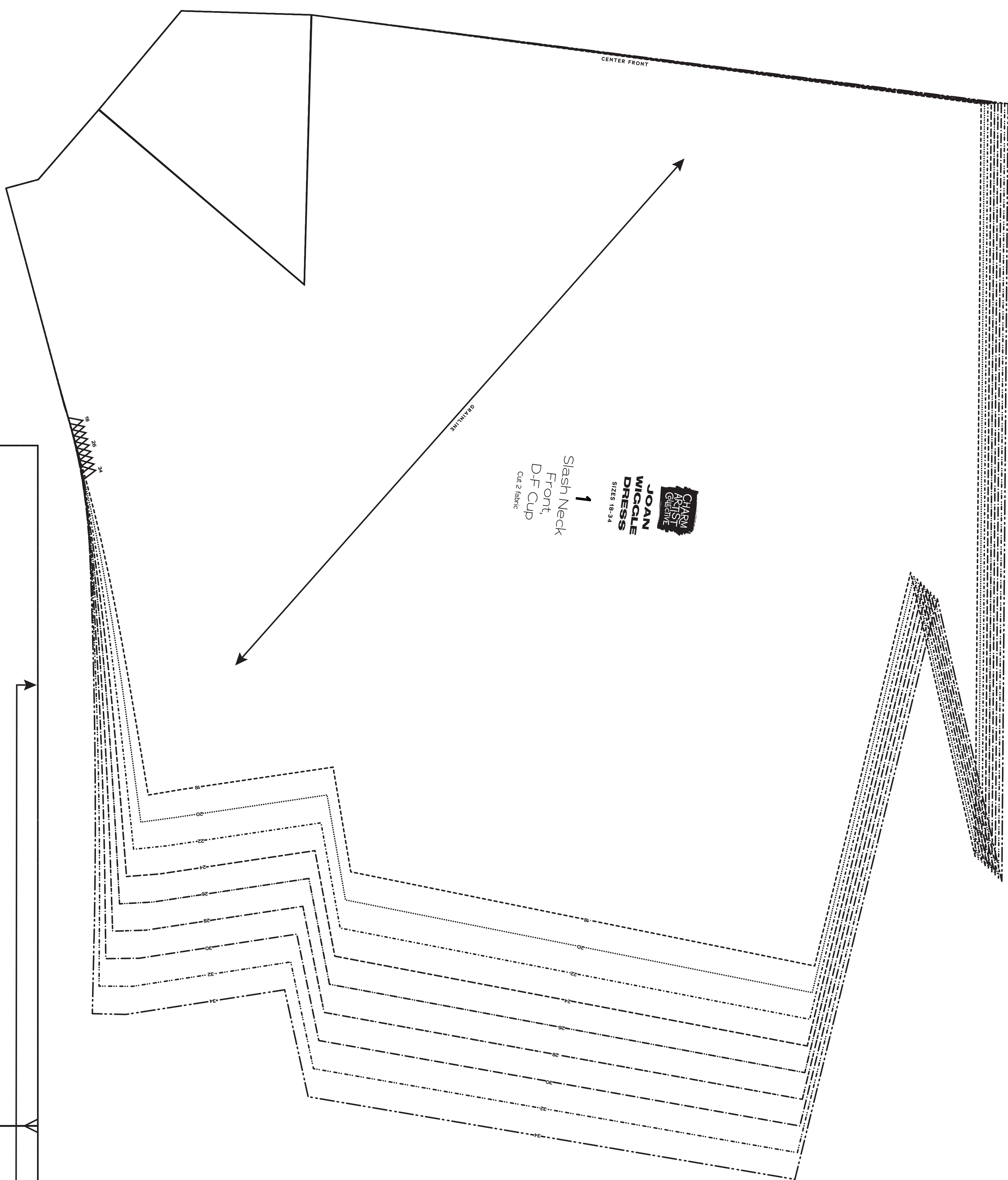
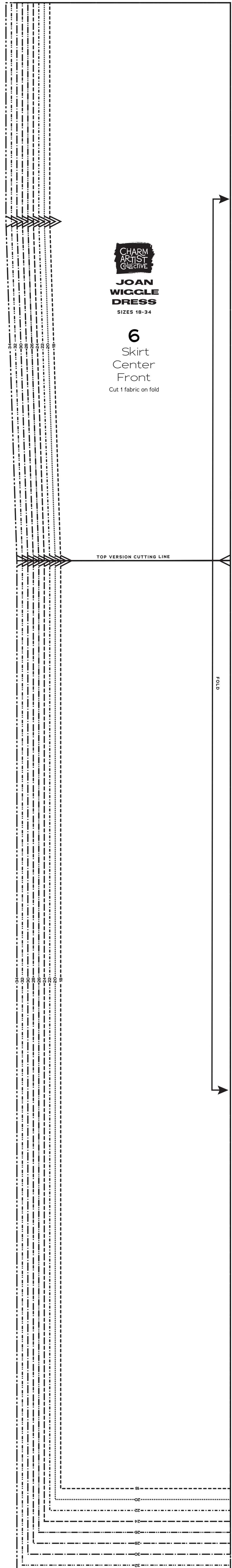
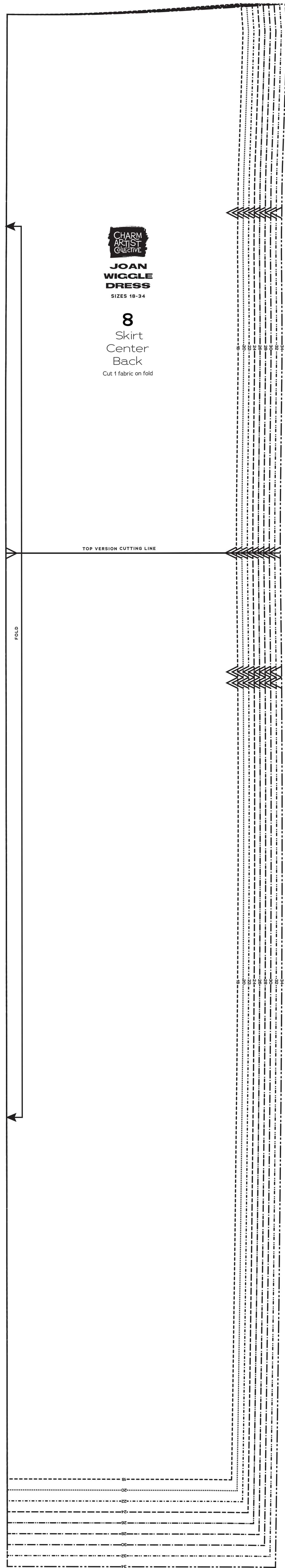
PATTERN PIECE INDEX

- 1 Slash Neck Front, D-F Cup
- 3 Sweetheart Neckline Front, D-F Cup
- 6 Skirt Center Back
- 8 Skirt Center Front
- 10 Gathering Guide (for Sweetheart Neckline)

**SIZE 18-34
PATTERN SIZE KEY**

18	-----
20	-----
22	-----
24	-----
26	-----
28	-----
30	-----
32	-----
34	-----

SYMBOL KEY
 grainline arrow
 match point/
 placement mark
 •



Sizes 18-34
with cup sizes A-H

5/8 inch (1.5 cm) seam allowances
are included on all pattern pieces.

PAGE 4 OF 4

PATTERN PIECE INDEX
7 Skirt Side Front
9 Skirt Side Back

SIZE 18-34

PATTERN SIZE KEY

18

20

22

24

26

28

30

32

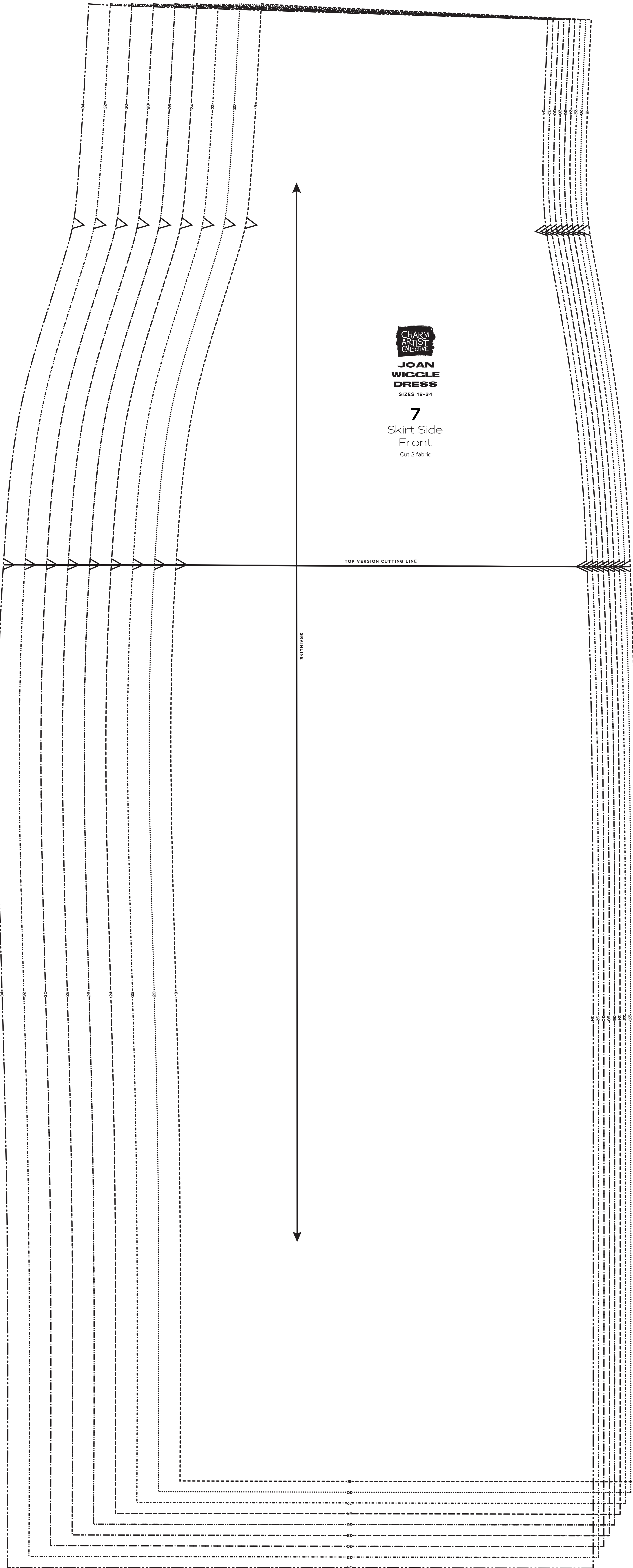
34

SYMBOL KEY

grainline arrow

match point/
placement mark

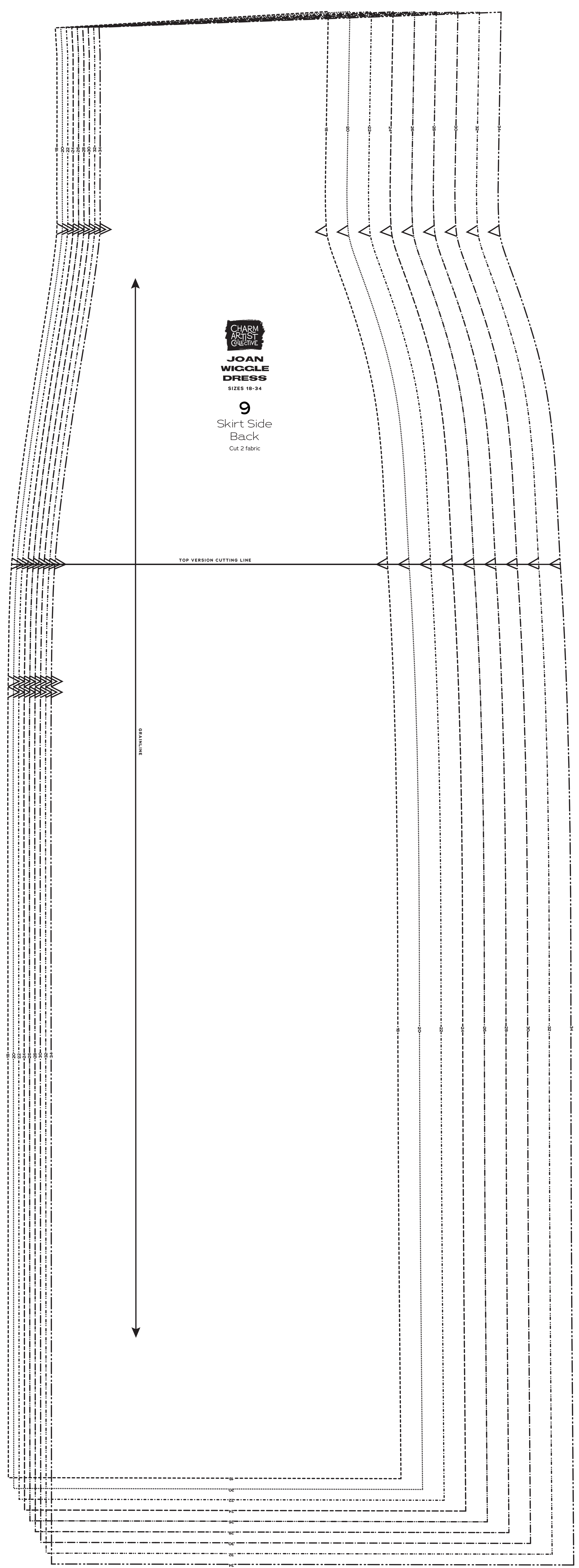
1" test
square



CHARM
ARTIST
COLLECTIVE

JOAN
WIGGLE
DRESS
SIZES 18-34

7
Skirt Side
Front
Cut 2 fabric



CHARM
ARTIST
COLLECTIVE

JOAN
WIGGLE
DRESS
SIZES 18-34

9
Skirt Side
Back
Cut 2 fabric