



Society of CHARM



Aurora

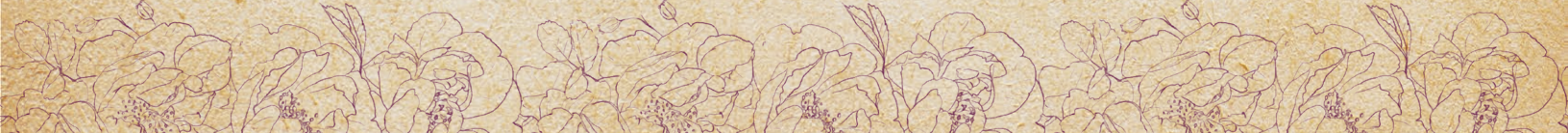
BODICE



MIX & MATCH
with the Stanwyck Skirt & Lucille Trousers

A PATREON EXCLUSIVE PATTERN

© 2023 Charm Patterns by Gertie





Demure by day and darling by night, the Aurora Bodice is a versatile addition to your mix-and-match wardrobe!

Choose a classic look with the basic darted bodice or add the optional laced corset-style overlay, peplum, and sleeves to create the fantasy outfit of your dreams.

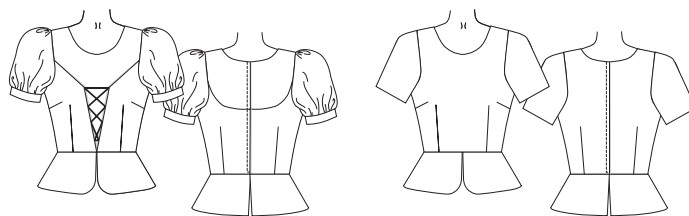
This fashion staple can be paired with any of our Stanwyck-series bottoms like the Stanwyck Skirt or Lucille Trousers, and with the peplum, it makes the perfect separate top, too. Don't forget to watch the companion tutorial video to see how it all comes together!



xoxo, Gertie

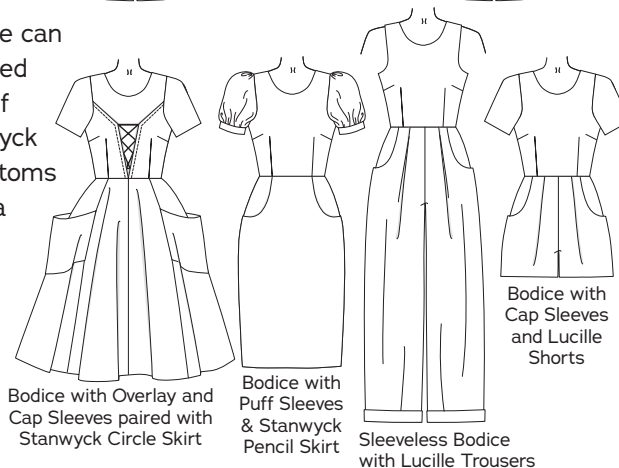
Key Details

- Simple darted bodice
- Optional cap or puffed short sleeves
- Optional bodice overlay, laced at center front with optional peplum
- Can be sewn as a separate top with peplum
- Can be lined or finished with bias binding at the neckline



This bodice can be combined with any of the Stanwyck Series bottoms to create a dress, jumpsuit, or romper.

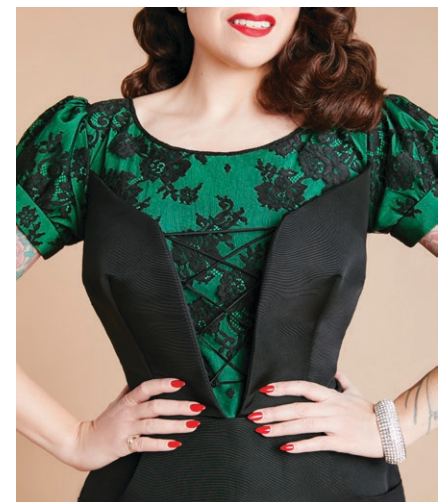
See more ideas on page 15.



Bodice with Overlay and Cap Sleeves paired with Stanwyck Circle Skirt

Bodice with Puff Sleeves & Stanwyck Pencil Skirt

Sleeveless Bodice with Lucille Trousers



SIZE CHART

The Aurora Bodice is sized in women's US 2–20 and 18–34, A–H cup sizes. Please use the chart below to pick your size. The High Bust measurement should be taken above your breasts and the Full Bust measurement should be taken at the fullest part of your bustline. Take the Waist measurement at the smallest part of your torso. Note that it is best to choose your size by your bust measurements (and add or remove from the side seams at the waist if needed).



Not sure which size range to choose? Read more about our [two size ranges here!](#)

SIZES

2-20	2	4	6	8	10	12	14	16	18	20
High Bust	29 in 73.7 cm	31 in 78.7 cm	33 in 83.8 cm	35 in 88.9 cm	37 in 94 cm	39 in 99 cm	41 in 104.1 cm	43 in 109.2 cm	45 in 114.3 cm	47 in 119.4 cm
Bust A cup	30.5 in 77.5 cm	32.5 in 82.5 cm	34.5 in 87.6 cm	36.5 in 92.7 cm	38.5 in 97.8 cm	40.5 in 102.9 cm	42.5 in 108 cm	44.5 in 113 cm	46.5 in 118.1 cm	48.5 in 123.2 cm
Bust B/C cup	31 in 78.7 cm	33 in 83.8 cm	35 in 88.9 cm	37 in 94 cm	39 in 99 cm	41 in 104.1 cm	43 in 109.2 cm	45 in 114.3 cm	47 in 119.4 cm	49 in 124.5 cm
Bust D/DD cup	32 in 81.3 cm	34 in 86.4 cm	36 in 91.4 cm	38 in 96.5 cm	40 in 101.6 cm	42 in 106.7 cm	44 in 111.8 cm	46 in 116.8 cm	48 in 121.9 cm	50 in 127 cm
Bust F/G cup	33 in 83.8 cm	35 in 88.9 cm	37 in 94 cm	39 in 99 cm	41 in 104.1 cm	43 in 109.2 cm	45 in 114.3 cm	47 in 119.4 cm	49 in 124.5 cm	51 in 129.5 cm
Bust H cup	34 in 86.4 cm	36 in 91.4 cm	38 in 96.5 cm	40 in 101.6 cm	42 in 106.7 cm	44 in 111.8 cm	46 in 116.8 cm	48 in 121.9 cm	50 in 127 cm	52 in 132.1 cm
Waist	24 in 61 cm	26 in 66 cm	28 in 71.1 cm	30 in 76.2 cm	32 in 81.3 cm	34 in 86.4 cm	36 in 91.4 cm	38 in 96.5 cm	40 in 101.6 cm	42 in 106.7 cm
Hips	36 in 91.4 cm	38 in 96.5 cm	40 in 101.6 cm	42 in 106.7 cm	44 in 111.8 cm	46 in 116.8 cm	48 in 121.9 cm	50 in 127 cm	52 in 132.1 cm	54 in 137.2 cm

SIZES

18-34	18	20	22	24	26	28	30	32	34
High Bust	39.5 in 100.3 cm	41.5 in 105.4 cm	43.5 in 110.5 cm	45.5 in 115.6 cm	47.5 in 120.7 cm	49.5 in 125.7 cm	51.5 in 130.8 cm	53.5 in 135.9 cm	55.5 in 141 cm
Bust A/B cup	42.5 in 108 cm	44.5 in 113 cm	46.5 in 118.1 cm	48.5 in 123.2 cm	50.5 in 128.3 cm	52.5 in 133.4 cm	54.5 in 138.4 cm	56.5 in 143.5 cm	58.5 in 148.6 cm
Bust C cup	43 in 109.2 cm	45 in 114.3 cm	47 in 119.4 cm	49 in 124.5 cm	51 in 129.5 cm	53 in 134.6 cm	55 in 139.7 cm	57 in 144.8 cm	59 in 149.9 cm
Bust D/DD cup	44 in 111.8 cm	46 in 116.8 cm	48 in 121.9 cm	50 in 127 cm	52 in 132.1 cm	54 in 137.2 cm	56 in 142.2 cm	58 in 147.3 cm	60 in 152.4 cm
Bust F/G cup	45 in 114.3 cm	47 in 119.4 cm	49 in 124.5 cm	51 in 129.5 cm	53 in 134.6 cm	55 in 139.7 cm	57 in 144.8 cm	59 in 149.9 cm	61 in 154.9 cm
Bust H cup	46 in 116.8 cm	48 in 121.9 cm	50 in 127 cm	52 in 132.1 cm	54 in 137.2 cm	56 in 142.2 cm	58 in 147.3 cm	60 in 152.4 cm	62 in 157.5 cm
Waist	40 in 101.6 cm	42 in 106.7 cm	44 in 111.8 cm	46 in 116.8 cm	48 in 121.9 cm	50 in 127 cm	52 in 132.1 cm	54 in 137.2 cm	56 in 142.2 cm
Hips	48 in 121.9 cm	50 in 127 cm	52 in 132.1 cm	54 in 137.2 cm	56 in 142.2 cm	58 in 147.3 cm	60 in 152.4 cm	62 in 157.5 cm	64 in 162.6 cm

Materials & Notions

- Fabric for the bodice
- Contrast fabric for the bodice overlay and peplum (optional)
- Lining fabric
- Thread to match
- Lightweight fusible interfacing (look for woven, weft, or tricot types)
- 1/4-in-wide fusible stay tape to stabilize the zipper (alternatively, cut a strip from a scrap of fusible interfacing yardage)
- 22-inch regular zipper (for inserting bodice into a dress or pantsuit) or 16-inch separating zipper (for a separate top)
- 12 in (30 cm) 1/4-in-wide (6 mm) non-elastic button looping or ribbon for overlay lacing loops (or use fabric bias tubing)
- 1 yard (0.9 m) 1/4-in-wide (6 mm) ribbon or cording for overlay lacing (or use fabric bias tubing)
- 1 yard (0.9 m) of 1/4-in-wide (6 mm) spiral steel boning
- Metal cutters and pliers
- Boning tips or Teflon tape
- 1 yard (0.9 m) of 1/2-in-wide (1.3 cm) boning channeling or bias tape

Resources

Here are some of the fabrics and supplies I used for the samples and in the video tutorial. There are lots of places to purchase fabric, so this is solely a guide you can use as a reference:

[Brown Swiss Dot](#)

[Black Linen Blend](#)

[Liberty Floral Lawn](#)

[Blue Linen Blend](#)

[Non-elastic Button Looping](#)

FIT NOTES

The Aurora Bodice is a fitted bodice with optional laced contrast overlay and peplum. The pattern is designed to fit with between 2 to 4 inches (in) (5.1 to 10.2 cm) of ease in the bust and 1 in (2.5 cm) of ease at the waist. See the charts below for finished garment measurements.

Darted styles like the Aurora Bodice require close attention to fitting, so be sure to make a muslin of this bodice. The bust darts should point directly toward your apex (the fullest part of the breast) and should end ½ in to 1 in (1.3 cm to 2.5 cm) from the apex. It is very common to need to adjust the length or height of darts to fit your unique bust shape.



Fabric Notes

We recommend **light- to medium-weight wovens**: cottons like broadcloth, denim, corduroy, poplin, and sateen; linen and linen blends; wool suitings, flannel, and tweed; brocade; and silk faille or silk/wool blends. Stretch wovens are suitable, but knit fabrics are not recommended for this design.

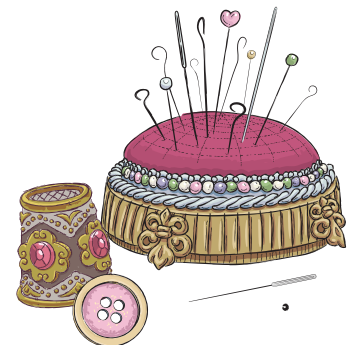
Optionally, you may choose a very light-weight sheer or lace bodice, paired with a more substantial overlay. Recommended sheer fabrics include cotton voile, eyelet, dotted swiss or batiste; and cotton or silk organza. We underlined our lace bodice with silk crepe de chine.

For lining fabrics, we recommend lightweight silks like charmeuse, crepe de chine, or habotai; cotton lawn; lining fabrics like rayon bemberg, acetate, or silky polyester; and silk/cotton blends.

Finished Measurements

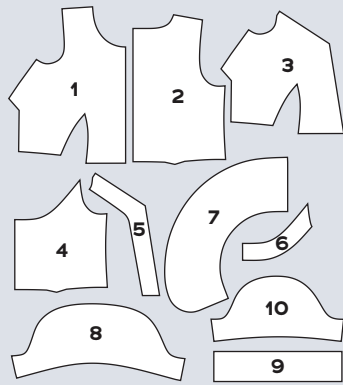
Sizes 2-20	2	4	6	8	10	12	14	16	18	20
Bust A	32.5 in 82.6 cm	34.5 in 87.6 cm	36.5 in 92.7 cm	38.5 in 97.8 cm	40.5 in 102.9 cm	42.5 in 108 cm	44.5 in 113 cm	46.5 in 118.1 cm	48.5 in 123.2 cm	50.5 in 128.3 cm
Bust B/C	33 in 83.8 cm	35 in 88.9 cm	37 in 94 cm	39 in 99.1 cm	41 in 104.1 cm	43 in 109.2 cm	45 in 114.3 cm	47 in 119.4 cm	49 in 124.5 cm	51 in 129.5 cm
Bust D/DD	34 in 86.4 cm	36 in 91.4 cm	38 in 96.5 cm	40 in 101.6 cm	42 in 106.7 cm	44 in 111.8 cm	46 in 116.8 cm	48 in 121.9 cm	50 in 127 cm	52 in 132.1 cm
Bust F/G	35 in 88.9 cm	37 in 94 cm	39 in 99.1 cm	41 in 104.1 cm	43 in 109.2 cm	45 in 114.3 cm	47 in 119.4 cm	49 in 124.5 cm	51 in 129.5 cm	53 in 134.6 cm
Bust H	36 in 91.4 cm	38 in 96.5 cm	40 in 101.6 cm	42 in 106.7 cm	44 in 111.8 cm	46 in 116.8 cm	48 in 121.9 cm	50 in 127 cm	52 in 132.1 cm	54 in 137.2 cm
Waist	25 in 63.5 cm	27 in 68.6 cm	29 in 73.7 cm	31 in 78.7 cm	33 in 83.8 cm	35 in 88.9 cm	37 in 94 cm	39 in 99.1 cm	41 in 104.1 cm	43 in 109.2 cm
Puff Sleeve Hem Circumference	11.75 in 29.8 cm	12.5 in 31.8 cm	13.25 in 33.7 cm	14 in 35.6 cm	14.75 in 37.5 cm	15.5 in 39.4 cm	16.25 in 41.3 cm	17 in 43.2 cm	17.75 in 45.1 cm	18.5 in 47 cm
Cap Sleeve Hem Circumference	11.75 in 29.8 cm	12.5 in 31.8 cm	13.25 in 33.7 cm	14 in 35.6 cm	14.75 in 37.5 cm	15.5 in 39.4 cm	16.25 in 41.3 cm	17 in 43.2 cm	17.75 in 45.1 cm	18.5 in 47 cm

Sizes 18-34	18	20	22	24	26	28	30	32	34
Bust A/B	46.5 in 118.1 cm	48.5 in 123.2 cm	50.5 in 128.3 cm	52.5 in 133.4 cm	54.5 in 138.4 cm	56.5 in 143.5 cm	58.5 in 148.6 cm	60.5 in 153.7 cm	62.5 in 158.8 cm
Bust C	47 in 119.4 cm	49 in 124.5 cm	51 in 129.5 cm	53 in 134.6 cm	55 in 139.7 cm	57 in 144.8 cm	59 in 149.9 cm	61 in 154.9 cm	63 in 160 cm
Bust D/DD	48 in 121.9 cm	50 in 127 cm	52 in 132.1 cm	54 in 137.2 cm	56 in 142.2 cm	58 in 147.3 cm	60 in 152.4 cm	62 in 157.5 cm	64 in 162.6 cm
Bust F/G	49 in 124.5 cm	51 in 129.5 cm	53 in 134.6 cm	55 in 139.7 cm	57 in 144.8 cm	59 in 149.9 cm	61 in 154.9 cm	63 in 160 cm	65 in 165.1 cm
Bust H	50 in 127 cm	52 in 132.1 cm	54 in 137.2 cm	56 in 142.2 cm	58 in 147.3 cm	60 in 152.4 cm	62 in 157.5 cm	64 in 162.6 cm	66 in 167.6 cm
Waist	41 in 104.1 cm	43 in 109.2 cm	45 in 114.3 cm	47 in 119.4 cm	49 in 124.5 cm	51 in 129.5 cm	53 in 134.6 cm	55 in 139.7 cm	57 in 144.8 cm
Puff Sleeve Hem Circumference	17 in 43.2 cm	17.75 in 45.1 cm	18.5 in 47 cm	19.25 in 48.9 cm	20 in 50.8 cm	20.75 in 52.7 cm	21.5 in 54.6 cm	22.25 in 56.5 cm	23 in 58.4 cm
Cap Sleeve Hem Circumference	17 in 43.2 cm	17.75 in 45.1 cm	18.5 in 47 cm	19.25 in 48.9 cm	20 in 50.8 cm	20.75 in 52.7 cm	21.5 in 54.6 cm	22.25 in 56.5 cm	23 in 58.4 cm



Pattern Pieces

1. **Bodice Front**
Cut 1 fabric on fold,
1 lining on fold
2. **Bodice Back**
Cut 2 fabric, 2 lining
3. **Corset Overlay Front**
Cut 2 fabric
4. **Corset Overlay Back**
Cut 2 fabric
5. **Overlay Front Facing**
Cut 2 fabric, 2 interfacing
6. **Overlay Back Facing**
Cut 2 fabric, 2 interfacing
7. **Peplum**
Cut 4 fabric
8. **Puff Sleeve**
Cut 2 fabric
9. **Puff Sleeve Band**
Cut 2 fabric, 2 interfacing
10. **Cap Sleeve**
Cut 2 fabric, 2 lining

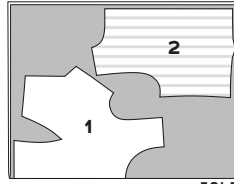


REQUIRED YARDAGE & CUTTING LAYOUTS

NOTE: All pattern pieces are shown in a “without nap” layout. You may need additional yardage for directional prints, stripes, plaids, and other prints that need to be matched across seamlines.

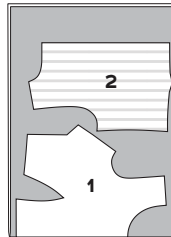
Bodice Fabric & Bodice Lining (1, 2)

	Sizes	
	2-10	12-20
45 in	7/8 yd .8 m	1 yd .9 m
60 in	5/8 yd .6 m	3/4 yd .7 m



45 in, all sizes
60 in, sizes 22-34

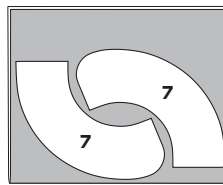
	Sizes	
	18-24	26-34
45 in	1 yd .9 m	1 1/8 yds 1 m
60 in	7/8 yd .8 m	1 yd .9 m



60 in, sizes 2-20

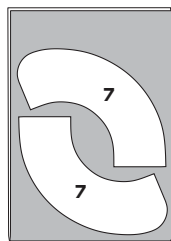
Peplum (7)

	Sizes	
	2-10	12-20
45 in	7/8 yd .8 m	7/8 yd .8 m
60 in	5/8 yd .6 m	3/4 yd .7 m



45 in, all sizes
60 in, sizes 26-34

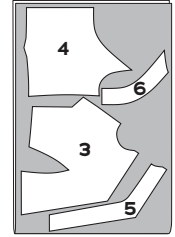
	Sizes	
	18-24	26-34
45 in	1 yd .9 m	1 yd .9 m
60 in	3/4 yd .7 m	1 yd .9 m



60 in, sizes 2-24

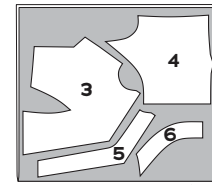
Overlay (3, 4, 5, 6)

	Sizes	
	2-10	12-20
45 in	3/4 yd .7 m	7/8 yd .8 m
60 in	5/8 yd .6 m	3/4 yd .7 m

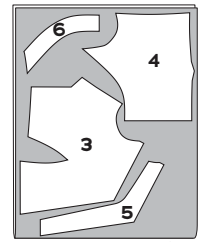


60 in, sizes 2-10

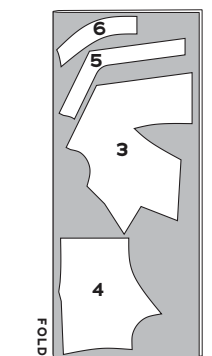
	Sizes	
	18-24	26-34
45 in	1 1/8 yds 1 m	1 1/4 yds 1.1 m
60 in	3/4 yd .7 m	7/8 yd .8 m



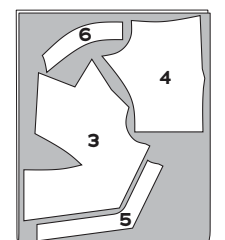
45 in, sizes 2-20



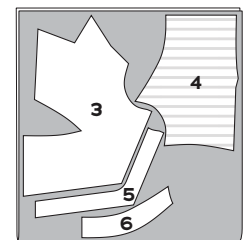
60 in, sizes 12-20



45 in, sizes 18-34



60 in, sizes 18-24



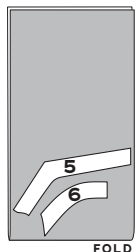
60 in, sizes 26-34

For the image above, cut on a crosswise layout: open out the full width of the fabric and fold it perpendicular to the selvages.

Interfacing

Overlay Facings (5, 6)

All sizes	
60 in	1/2 yd .5 m



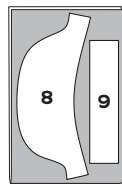
Puff Sleeve (9)

All sizes	
60 in	1/4 yd .2 m



Puff Sleeve Fabric (8, 9)

	Sizes	
	2-10	12-20
45 in	1/2 yd .5 m	3/4 yd .7 m
60 in	1/2 yd .5 m	1/2 yd .5 m



45 in, sizes 2-10
60 in, all sizes

	Sizes	
	18-24	26-34
45 in	3/4 yd .7 m	7/8 yd .8 m
60 in	1/2 yd .5 m	1/2 yd .5 m

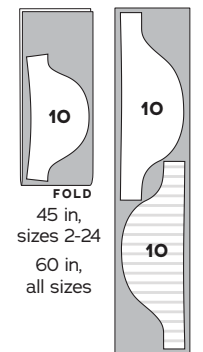


45 in, sizes 12-34

For the image at left, cut on a crosswise layout: open out the full width of the fabric and fold it perpendicular to the selvages.

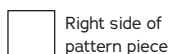
Cap Sleeve Fabric & Cap Sleeve Lining (10)

All sizes	
45 in	3/8 yd .3 m
60 in	



45 in, sizes 26-34
Cut on a single layer of fabric.

KEY TO LAYOUTS



Be sure to note whether the pieces are cut on a double or single layer of fabric. For a double layer, there will be a note indicating FOLD on the layout.

SEWING INSTRUCTIONS

BEFORE SEWING

Transferring marks: use dressmaker's tracing paper and a tracing wheel to transfer all pattern markings to the wrong side (WS) of your fabric. Mark pattern notches by snipping into the seam allowance with the tip of your scissors.

Interfacing: some of the pattern pieces need to be stabilized with fusible interfacing prior to sewing. Follow the interfacing cutting instructions on the pattern pieces. Apply fusible interfacing to the WS of the fabric, using a press cloth and steam. Do not rub your iron back and forth; lift it up and press it down for several seconds at a time until interfacing is fully adhered.

Seam finishing: if finishing seams with a serger, serge the following seam allowances (without trimming the edges) before construction.

- Lower long edge of Overlay Facings
- Puff Sleeve vertical seam

NOTES

- 5/8-in (1.5 cm) seam allowances are included on all pattern pieces, except where otherwise noted.
- Press your stitching lines after every step, even when not specified in the instructions. You do not need to press basting or gathering stitches.

NECKLINE BINDING FOR SHEER BODICES

The bodice of the Aurora Dress can be made from a sheer material and does not need to be lined. (This option is appropriate for the sleeveless version only if you also bind the armholes.)

Sew the bodice, omitting the lining. Prepare a length of fabric double-fold bias binding, with a finished



MIX & MATCH

THIS PATTERN IS PART OF THE STANWYCK SERIES

The Aurora Bodice is an alternative bodice for any of the Stanwyck-series bottoms, and can be used to create a dress, jumpsuit, or romper. On the last page, check out more examples of how you could combine the Stanwyck Skirt options with other patterns in the Stanwyck Series. See the full list of mix and match options for this series at CharmPatterns.com/mix-and-match.

measurement equal to your desired neckline binding width. Our finished neckline bindings measured 1/8 in (3 mm) for the dotted swiss bodice and 1/4 in (6 mm) for the green lace and black faille bodice.

Trim 5/8 in (1.5 cm) from the bodice neckline seam allowance. After installing the zipper, trim the top zipper tape equal to the neckline raw edge. Wrap and pin the double-fold bias binding around the neckline raw edge, including the top zipper tape, tucking under the binding ends at the CB opening. Stitch by machine or hand to secure.

SEW THE DRESS

The Aurora Bodice can be paired with any Stanwyck-series skirt or pants pattern, with or without the peplum. For a separate top, the peplum is required. For all variations, start here.

Bodice

1. Staystitch the neckline: to stabilize the neckline, use a 1/2-in (1.3 cm) seam allowance and stitch from the shoulder seam to the center front (CF) on the Bodice Front (1) and bodice front lining, backstitching at both ends. Repeat for the Bodice Backs (2) and bodice back linings, stitching from the shoulder seam to the center back (CB).

2. Stabilize zipper opening: apply 1 1/4-in-wide (3 cm) strips of fusible interfacing to the WS of the bodice backs at the CB from neckline to lower raw edge.

3. Sew bust darts and back waist darts: on the bodice front (bust darts only) and bodice back waist darts, bring dart legs right sides (RS) together, pinning along marked lines. Stitch along marked lines from dart base to dart point. Backstitch at the beginning but not at the end, leaving a thread tail a few inches long. Tie thread tails by hand to secure. Press bust darts down and back waist darts toward CB. Repeat for bodice linings.

4. Sew front split waist darts: the bodice front waist darts have a cut-out section. To sew them, match the dart's cut edges and stitch $\frac{5}{8}$ in (1.5 cm) from the raw edge, starting from the base and following the marked stitching lines to the dart point. Clip the seam allowance of the upper dart legs open to just below the point. Press dart legs open and tip of the dart flat. Repeat for the bodice front lining.

5. Sew shoulder seams: pin bodice front unit to bodice back units at shoulder seams, RS together. Stitch. Press seam allowances open. Repeat for the bodice linings.

Skip to the Overlay section for a bodice with the laced overlay. For a sleeveless bodice without the overlay, skip to the Finishing Neckline section. For a bodice without the overlay but with sleeves, continue to the next step.

6. Sew side seams: pin bodice front unit to bodice back units at side seams, RS together. Stitch. Press seam allowances open. Repeat for the bodice linings.

Continue to the Finishing Neckline section.

Overlay

1. Sew overlay bust darts and back waist darts: on the Overlay Front (3) (bust darts only) and Overlay Back (4) waist darts, bring dart legs RS together, pinning along marked lines. Stitch along marked lines from dart base to dart point. Backstitch at the beginning but not at the end, leaving a thread tail a few inches long. Tie thread tails by hand to secure. Press bust darts down and back waist darts toward CB.

2. Sew overlay front split waist darts: on each overlay front, match the dart's cut edges and stitch $\frac{5}{8}$ in (1.5 cm) from the raw edge, starting from the base and following the marked stitching lines to the dart point. Clip the seam allowances of the upper dart legs open to just below the point. Finish seam allowances if desired. Press dart legs open and tip of the dart flat.

3. Apply boning channels: position and pin boning channeling to the Overlay Front Facing (5) WS along the marked boning channel line. Edgestitch along both sides of the channeling. Press flat.

4. Attach lacing loops: cut two lengths of non-elastic button looping to the length of overlay center front opening. Pin looping to the RS of the overlay front facing with loops aligning with the marked circles, making sure loops on both bodice fronts are even with each other. The loops will point to the CF opening and will lay on top of the boning channeling. Stitch looping into place. **NOTE:** Alternatively, you can create the button loops individually. Cut 8 lengths of $\frac{1}{4}$ -in (6 mm) cording or bias tubing $1\frac{1}{2}$ in (3.8 cm) long. Fold each in half and pin to the RS of the overlay front facing with the loop at the marked circles. The loop will point to the CF opening and the tails will point to the facing raw edge. Stitch into place individually, leaving a loop opening of $\frac{1}{4}$ in (6 mm). Trim the tails.

5. Sew front facing to overlay: pin overlay front facing to overlay front, RS together, along CF and neckline edge. Stitch, pivoting at the corner, and being careful not to catch the boning channel or loops in your stitching along the CF opening. You will stitch across the top of the boning channel. Clip the corner and grade seam allowances so those on the overlay are wider and those on the facing are narrower.

6. Understitch front facing: from RS, with facing opened out from overlay and seam allowances underneath, stitch the facing $\frac{1}{8}$ in (3 mm) from the seamline, catching seam allowances in stitching. Start stitching at the armhole edge and end at the neckline edge circle. Do not stitch over the boning channel. Turn facing to overlay WS and press, rolling seamline slightly so it is hidden inside the overlay.

7. Secure front facing: secure the front facing to the overlay, WS together, by hand tacking through all layers along the length of the non-elastic button looping. Alternatively, topstitch from the overlay RS through all layers $\frac{3}{4}$ in (1.9 cm) from the center front and neckline edge, pivoting at the corner.

8. Insert the boning: cut spiral steel boning lengths so that they are about $\frac{1}{4}$ in (6 mm) shorter than the length of the boning channeling along the overlay opening. Apply caps to the boning ends with pliers, or wrap the ends with Teflon tape and insert them into the boning channels.

9. Baste front overlay to bodice: pin WS of overlay front to RS of bodice front, matching darts, with the overlay facing sandwiched inside. Baste front overlay to bodice along armhole, side seam, and waist edges.

10. Sew back facing to overlay: pin Overlay Back Facing (6) to overlay back, RS together, along the neckline edge. Stitch the neckline edge. Grade seam allowances so those on the overlay are wider and those on the facing are narrower.

11. Understitch back facing: from RS, with facing opened out from overlay and seam allowances underneath, stitch the facing 1/8 in (3 mm) from the seamline, catching seam allowances in stitching. Turn facing to overlay WS and press, rolling seamline slightly so it is hidden inside the overlay. If you topstitched the front facing, you may wish to topstitch the neckline edge of the back facing as well.

12. Baste back overlay to bodice: pin WS of overlay back to RS of bodice back, matching darts, with overlay facing sandwiched inside. Baste back overlay to bodice along armhole, side seam, waist, and CB edges.

*For a sleeveless bodice, skip to the Finishing Neckline section.
For a bodice with sleeves, continue to the next step.*

13. Sew side seams: pin bodice front unit to bodice back units at side seams, RS together. Stitch. Press seam allowances open. Repeat for the bodice linings.

Continue to the next section.

Finishing Neckline

1. Prepare to attach lining with the clean-finish method: pin bodice lining to bodice around neckline, RS together. At zipper opening's top edge, working with bodice back facing up, fold seam allowances as follows: on right half of opening (the underlap), fold both seam allowances 1/2 in (1.3 cm) to lining WS. The lining seam allowance is nested inside the outer fabric seam allowance. On opening's left half (the overlap), fold lining seam allowance 7/8 in (2.2 cm) to WS. Fold outer fabric seam allowance 5/8 in (1.5 cm) to WS. The seam allowances nest inside each other with a 1/4-in (6 mm) gap between the two. Folding seam allowances this way ensures lining is finished neatly around lapped zipper at neckline.

2. Sew lining to bodice: stitch around neckline, starting at one folded edge and ending at the other folded edge. Grade seam allowances so those on the bodice are wider and those on the lining are narrower. Clip into curves every 1/2 in (1.3 cm), being careful not to clip into the stitching.

3. Understitch neckline: working from RS, with lining opened out from bodice and seam allowances underneath, stitch the lining 1/8 in (3 mm) from the seamline, catching seam allowances in stitching. Turn lining to bodice WS and press neckline edge, rolling seamline slightly so it is hidden inside the dress.

*If making a sleeveless bodice, proceed to the next section.
If making a bodice with sleeves, proceed to either the Puff Sleeve or Cap Sleeve section.*

Sleeveless Bodice

1. Finish armholes: turn lining back to bodice RS. Pin lining armholes to bodice armholes, RS together, matching notches and shoulder seams. Stitch around each armhole. Grade seam allowances so those on the bodice are the widest. Clip into armhole curve every 1/2 in (1.3 cm).

2. Turn lining to WS: turn the bodice RS out by reaching through each front shoulder and pulling bodice backs through.

3. Understitch armholes: understitch each armhole as for neckline, sewing the front and back of the armhole separately. Break stitching by backstitching and trimming the threads and restarting on the other side of the armhole when the shoulder gets too narrow to continue. Press armhole edges, rolling seamline to WS.

4. Sew side seams: flip the lining out from the bodice unit. Pin bodice front unit to bodice back units, RS together, from bodice waist raw edge to lining waist raw edge, matching underarm seam. Stitch side seam, including lining, in one pass and press seam allowances open. Turn lining back to WS of bodice.

Skip to the Peplum section to attach the peplum. For a bodice without the peplum, skip to the Garment Finishing section.

Puff Sleeve

- 1. Prepare bodice lining armhole:** staystitch around bodice lining armholes using a $\frac{5}{8}$ -in (1.5 cm) seam allowance. Clip into curves and press armhole seam allowances to WS of bodice, pressing staystitching to WS so that it does not show from RS of lining.
- 2. Sew sleeve underarm seam:** pin Puff Sleeves (8) RS together at underarm seams. Stitch. Press seam allowances open.
- 3. Gather sleeve cap:** using a 4-mm to 5-mm-long gathering stitch, sew two lines of gathering stitches within the seam allowance between circles on the puff sleeve cap. Sew the first line of gathering stitches $\frac{1}{2}$ in (1.3 cm) from the raw edge and the second line $\frac{1}{4}$ in (6 mm) from the raw edge. Pull up bobbin threads to gather sleeve cap.
- 4. Gather lower edge of sleeve:** sew two lines of gathering stitching within the seam allowance between circles along the sleeve edge. Pull up bobbin threads to gather.
- 5. Sew sleeve band:** press Puff Sleeve Bands (9) in half, WS together, lengthwise along fold line to crease. Open up bands. Press one long raw edge $\frac{5}{8}$ in (1.5 cm) to WS. Open up bands again and pin short ends RS together to form a ring. Stitch. Press seam allowances open.
- 6. Attach band to sleeve:** pin unpressed edge of band to gathered edge of sleeve, RS together, matching circles and seams and distributing gathers evenly. Stitch. Press seam allowances toward band. Grade seam allowances so those on the band are wider and those on the sleeve are narrower.
- 7. Finish band:** fold bands along pressed center crease, and pin each band into place, enclosing graded seam allowances of sleeve and band. Slipstitch invisibly in place by hand.
- 8. Set sleeves into bodice:** pin each sleeve to bodice armholes, RS together, matching notches, circles, and seamlines. Distribute gathering stitches evenly between circles. Stitch, keeping bodice lining free from stitching. Trim sleeve seam allowances to $\frac{3}{8}$ in (1 cm), then press toward bodice.

- 9. Hand stitch bodice lining around armhole:** pin bodice lining in place around armholes, completely enclosing all seam allowances. Slipstitch lining in place by hand.

Skip to the Peplum section to attach the peplum. For a bodice without the peplum, skip to the Garment Finishing section.

Cap Sleeve

- 1. Prepare bodice lining armhole:** staystitch around bodice lining armholes using a $\frac{5}{8}$ -in (1.5 cm) seam allowance. Clip into curves, being careful not to clip through stitching, and press armhole seam allowances to WS of bodice, pressing staystitching to WS so that it does not show from RS of lining.
- 2. Sew sleeve underarm seam:** pin Cap Sleeves (10) RS together at underarm seams. Stitch. Press seam allowances open. Repeat for the cap sleeve lining.
- 3. Attach sleeve lining:** pin cap sleeves to cap sleeve linings, RS together at hem. Stitch. Grade seam allowances and clip into curves every $\frac{1}{2}$ in (1.3 cm) as needed. Turn sleeves RS out.
- 4. Understitch sleeve hem:** with sleeve opened out from lining and seam allowances underneath, stitch along lining $\frac{1}{8}$ in (3 mm) from the seamline on lining's RS, catching seam allowances in stitching. Press sleeve hem, rolling seamline slightly to WS so understitching is hidden on inside of sleeve. With WS together, baste the sleeve to sleeve lining around the armhole with $\frac{1}{2}$ -in seam allowance and treat as one unit.
- 5. Ease sleeve cap:** sew two lines of gathering stitches within the seam allowance between the notches on each side of the sleeve caps. Sew the first using $\frac{1}{2}$ -in (1.3 cm) seam allowance and the second using $\frac{1}{4}$ -in seam allowance. Pull up bobbin threads to ease sleeve cap.
- 6. Set sleeves into bodice:** pin each sleeve to bodice armholes RS together, matching notches and seamlines. Distribute easing evenly between notches to avoid any visible gathers or tucks when sewn. Stitch, keeping bodice lining free from stitching. Trim sleeve seam allowances to $\frac{3}{8}$ in (1 cm) and press toward bodice.

7. Hand stitch bodice lining around armhole: pin bodice lining in place around armholes, completely enclosing all seam allowances. Slipstitch lining in place by hand.

Continue to the next section to attach the peplum. For a bodice without the peplum, skip to the Garment Finishing section.

Peplum

1. Assemble self-lined peplum units: pin Peplum (7) to peplum lining, RS together, along short straight edge and outer curved edge. Stitch, pivoting at the corner. Grade seam allowances. Clip diagonally across corner and notch into curve. Repeat for second peplum unit.

2. Attach peplum to bodice: pin peplum units to bodice, RS together, matching notches, darts, and circles. The peplum CFs will meet at the bodice CF circle and the peplum CB finished edge will align $\frac{5}{8}$ -in (1.5 cm) from the bodice CB raw edge. Stitch, being careful not to catch the bodice lining in your stitches. Grade seam allowances and press toward the bodice.

Continue to the next section.

Garment Assembly

1. Attach bodice to skirt or pants (if attaching to a Stanwyck-series bottom): sew the Stanwyck-series bottom of your choice following the instructions, omitting the waistband. Pin bodice (or bodice and peplum unit) to bottom at the waistline, matching darts to seamlines/pleats (if applicable). Stitch, being careful not to catch the bodice lining in the stitching. Press the waist seam toward the bodice.

2. Sew underlap half of zipper, leaving lining free: with garment RS out and lining out of the way, on right half of opening (the underlap), press zipper opening

seam allowance to WS $\frac{1}{2}$ in (1.3 cm). With zipper closed, pin zipper under pressed seam allowance, placing zipper teeth just left of fabric fold. The zipper stop should be positioned just below where the lining meets the bodice at the neckline (the upper edge of the zipper tape will get folded in during the finishing steps). Open zipper halfway. Using a zipper foot, stitch from top to bottom next to zipper teeth, just on the fold. As needle approaches zipper pull, stop stitching with needle in the fabric and close zipper; resume stitching to base. Backstitch. **NOTE:** treat the optional overlay and bodice as one unit when inserting the zipper. For a top, insert a separating zipper from the neckline to the waist.

3. Sew overlap half of zipper, leaving lining free: on left half of zipper opening (the overlap), press seam allowance under $\frac{5}{8}$ in (1.5 cm). With zipper closed, position overlap over zipper teeth so fabric fold just covers stitching on underlap. Pin overlap to zipper tape. Open zipper and topstitch overlap $\frac{3}{8}$ in (1 cm) from fold, closing zipper when you reach the pull; finish stitching to base. Pivot the work and stitch across base of zipper opening.

4. Finish lining at zipper and waistline: turn under the lining seam allowances at the zipper opening and waistline and pin in place. Hand slipstitch the lining to the zipper tape and to the waistline seam.

5. Hem garment (if attached to a Stanwyck-series bottom): follow the instructions on your Stanwyck-series bottom to hem the garment.

6. Adjust lacing (overlay only): thread the lacing through the button loops at markings (skipping the loops between markings) and adjust as desired. Secure by knotting the lacing to the bottom lacing loops and trim the excess.

Enjoy your adorable new Aurora Bodice!

PATTERN PIECE LOCATION GUIDE

Here is a list to help you locate the pattern pieces on the letter-size tiled pages and A0 pattern sheets.
The tiled pieces and A0 sheets are included as separate pdf files as part of this digital pattern.

SIZES 2-20

PC#	Piece Name	Tiled	A0
1	Bodice Front, A Cup	1-3, 13-15	1
1	Bodice Front, B/C Cup	7-9, 19-21	1
1	Bodice Front, D/DD Cup	27-29, 39-41	2
1	Bodice Front, F/G Cup	32-34, 44-46	2
1	Bodice Front, H Cup	51-54, 63-66	3
2	Bodice Back	10-12, 22-24	3
3	Corset Overlay Front, A Cup	3-5, 15-17	1
3	Corset Overlay Front, B/C Cup	5-7, 17-19	1
3	Corset Overlay Front, D/DD Cup	25-27, 37-39	2
3	Corset Overlay Front, F/G Cup	29-31, 41-44	2
3	Corset Overlay Front, H Cup	49-51, 61-63	3
4	Corset Overlay Back	34-36, 46-48	4
5	Overlay Front Facing, A Cup	3-5	1
5	Overlay Front Facing, B/C Cup	5-7	1
5	Overlay Front Facing, D/DD Cup	25-27	2
5	Overlay Front Facing, F/G Cup	29-32	2
5	Overlay Front Facing, H Cup	49-51	3
6	Overlay Back Facing	10-11	3
7	Peplum	57-60, 71-72	4
8	Puff Sleeve	54-57, 67-68	4
9	Puff Sleeve Band	66-68	4
10	Cap Sleeve	69-71	4

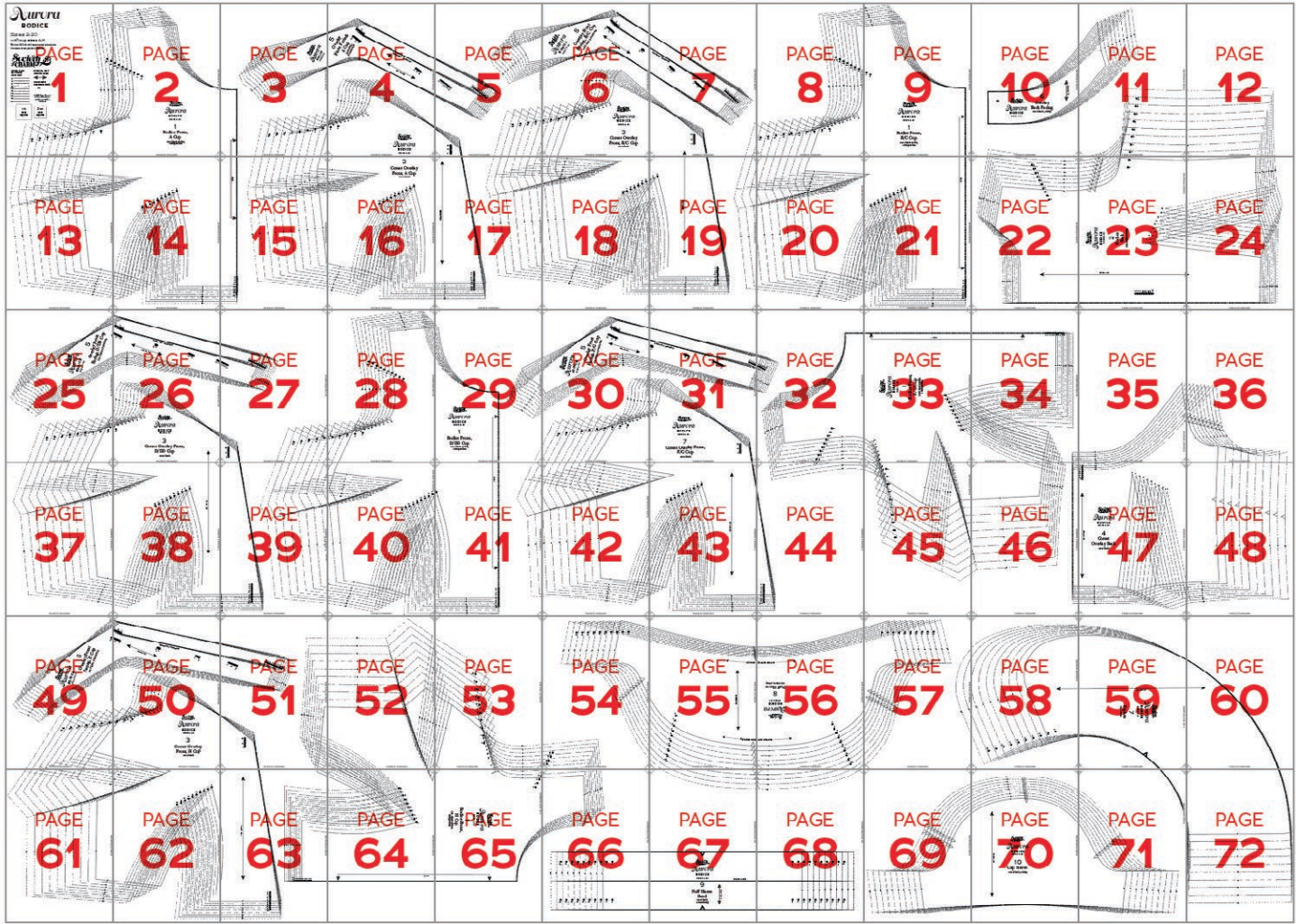
SIZES 18-34

PC#	Piece Name	Tiled	A0
1	Bodice Front, A/B Cup	1-3, 13-15	1
1	Bodice Front, C Cup	7-9, 19-21, 31-32	2
1	Bodice Front, D/DD Cup	25-27, 37-39	3
1	Bodice Front, F/G Cup	20-21, 31-34, 43-46	4
1	Bodice Front, H Cup	49-52, 61-64, 73-74	5
2	Bodice Back	52-53, 62-65, 74-77	4
3	Corset Overlay Front, A/B Cup	4-6, 16-18	1
3	Corset Overlay Front, C Cup	10-12, 22-24	2
3	Corset Overlay Front, D/DD Cup	28-30, 40-42	3
3	Corset Overlay Front, F/G Cup	34-36, 46-48, 58-60	4
3	Corset Overlay Front, H Cup	53-55, 65-68, 77-79	5
4	Corset Overlay Back	69-71, 81-83	5
5	Overlay Front Facing, A/B Cup	4-6	1
5	Overlay Front Facing, C Cup	10-12	2
5	Overlay Front Facing, D/DD Cup	26-29	3
5	Overlay Front Facing, F/G Cup	35-36, 48	4
5	Overlay Front Facing, H Cup	29-32	5
6	Overlay Back Facing	52-53	1
7	Peplum	56-59, 68-71, 80-81	3
8	Puff Sleeve	59-60, 71-72, 83-84	1
9	Puff Sleeve Band	73-76	2
10	Cap Sleeve	54-57	2

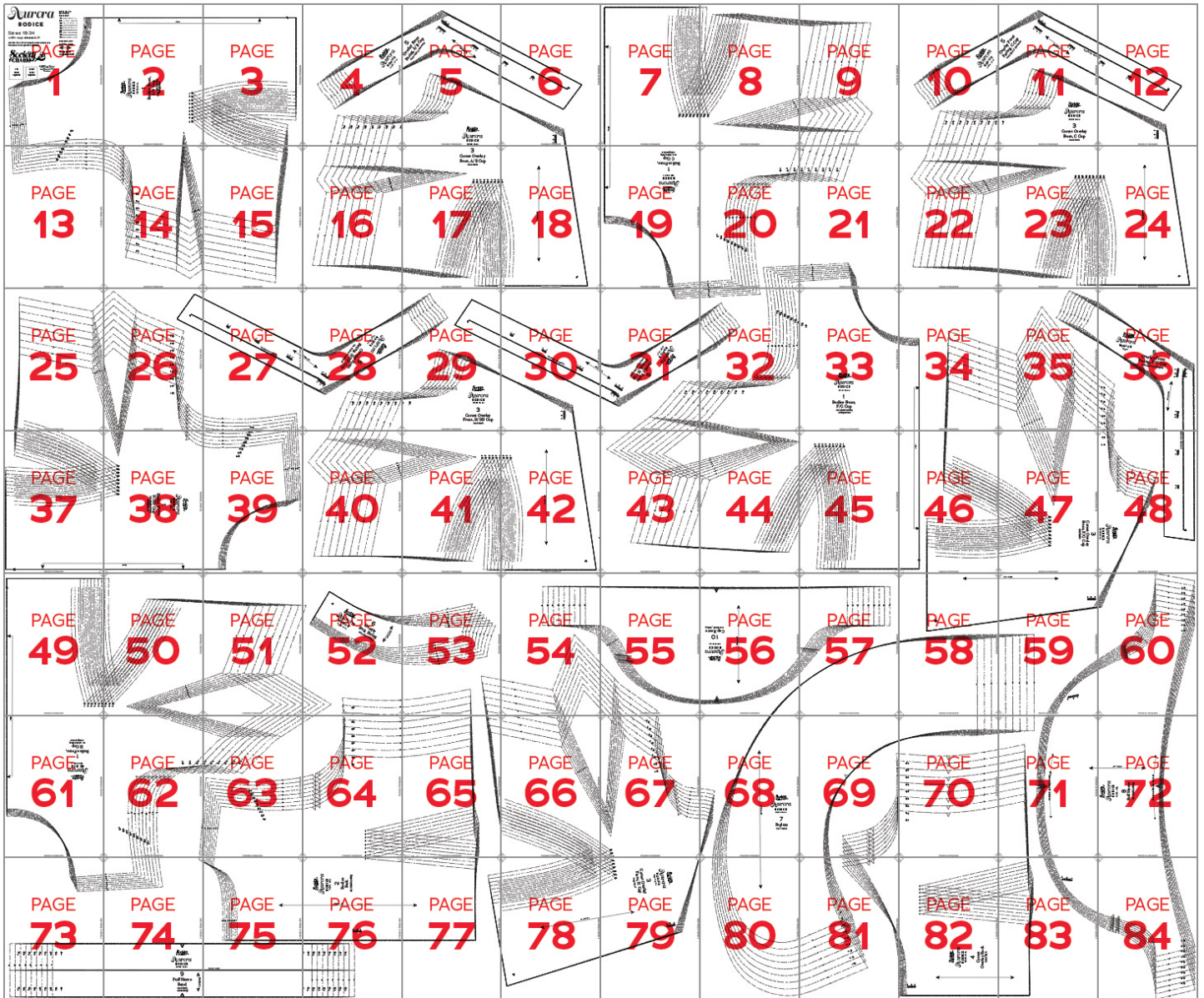


TILING MAPS

Sizes 2-20



Sizes 18-34



HOW TO USE THIS PATTERN

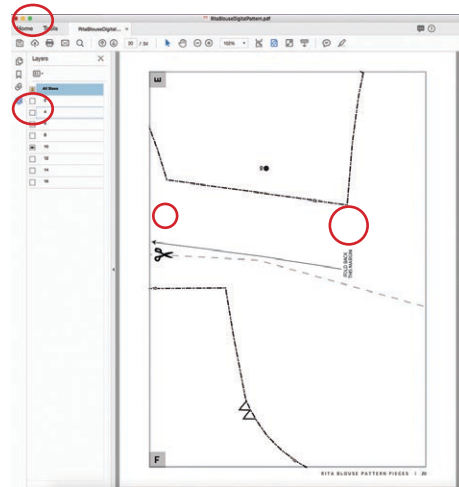
The pattern pieces are tiled so you can print them on Letter (8½” x 11”) or A4 size paper. You can also send the A0 pattern sheet PDF to a local or online printer (like www.pdfplotting.com) to print on large sheets (36” x 48” for U.S. or AO for international).

This pattern includes size layers. To get the best results, open either the Tiled or A0 pattern pieces PDF in Acrobat Reader.

Open the Layers Palette (View > Show/Hide > Navigation Panes > Layers) and hide all of the layer(s) except for

the ones you want to print by clicking on the eye icon.

The All Sizes layer has general pattern information and will always print.



WORKING WITH THE TILED PIECES

Go to File > Print and change the page range to the pages you need for the pieces you’ve chosen (see Pattern Pieces Printing Index). Make sure the Page Sizing settings to 100% or Actual Size. Test this after printing by measuring the 1” test box on the first page of the bodice pattern pieces.

Cut apart any pattern pieces that share a page by cutting on the gray long dashed lines. Then fold back the page margins on each page as directed.

Tape the pages together, butting up the folded page edges with the gray margin lines, matching up the letters in gray boxes.

MORE FROM GERTIE

On Instagram: Stay in the loop and get inspired.

On YouTube: Learn beginner and advanced sewing skills and techniques through my tutorials, watch episodes of my Gertie’s World series, and join regular live streams.

On Patreon: Access monthly patterns and tutorial videos.

At CharmPatterns.com: Shop my sewing patterns and accessories.



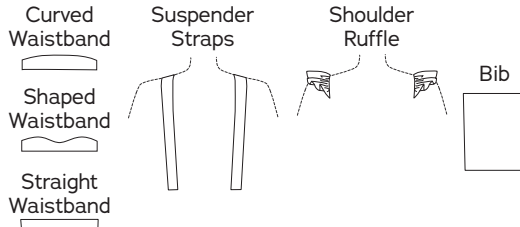


MIX & MATCH

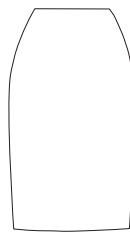
THE STANWYCK SERIES

The following patterns can be interchanged with the Aurora Bodice.
Find more at CharmPatterns.com/mix-and-match

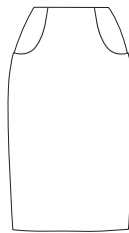
STANWYCK SKIRT



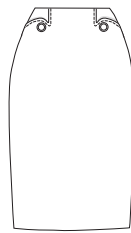
Pencil Skirt with Flat Front (No Pockets)



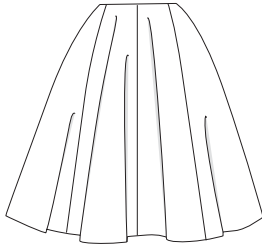
Pencil Skirt with Curved Pockets



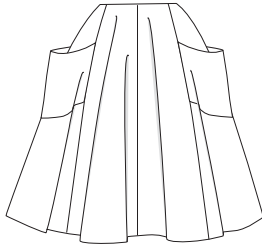
Pencil Skirt with Shaped Pockets



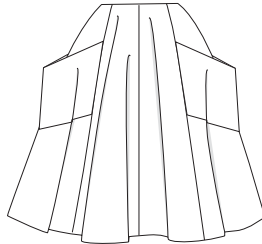
Gored Circle Skirt with No Pockets



Gored Circle Skirt with Curved Pockets



Gored Circle Skirt with Chevron Pockets



Combine the Stanwyck Series patterns with other Charm Patterns separates, such as:



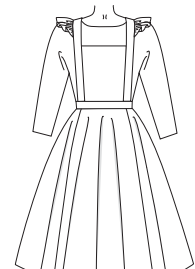
Pencil Skirt with Shaped Pockets with Princess Coat Cropped Jacket with Lantern Sleeve



Gored Circle Skirt with Curved Pockets with Princess Coat Cropped Jacket with notched collar and Three-Quarter Tailored Sleeve



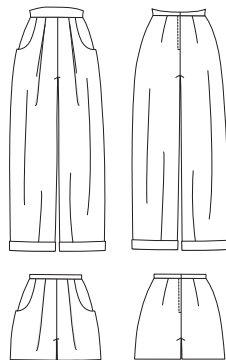
Pencil Skirt with Curved Pockets with Rita Blouse



Gored Circle Skirt with Ruffle Pockets with Hepburn Top

LUCILLE TROUSERS

Trousers or shorts with pleated front, cuffed leg, pockets, and high shaped waistband or straight waistband



Pair with Stanwyck Skirt bib and suspenders for dungarees



Pair with a Stanwyck-series bodice for a jumpsuit



EMBELLISHED FELT SKIRTS

Floral and Diamond appliqué designs for a felt Stanwyck Gored Circle Skirt

