

CHARM ARTIST COLLECTIVE **BROOKLYN JACKET**

Sizes 18-34
with cup sizes A-H

5/8 inch (1.5 cm) seam allowances are included on all pattern pieces.

PAGE 2 OF 6

PATTERN PIECE INDEX

- 1 Jacket Front, D/DD Cup
- 1 Jacket Front, F/G Cup
- 1 Jacket Front, H Cup
- 8 Back Neck Facing
- 13 Faux Welt Pocket (optional)

SIZE 18-34
PATTERN
SIZE KEY

18 - - - - -
20 - - - - -
22 - - - - -
24 - - - - -
26 - - - - -
28 - - - - -
30 - - - - -
32 - - - - -
34 - - - - -

SYMBOL KEY

grainline arrow
match point/
placement mark
1" test square

© 2022 Charm Patterns
for Series Distribution
and Commercial Use
Prohibited.

CHARM ARTIST COLLECTIVE **BROOKLYN JACKET** **SIZES 18-34**

13
Faux Welt
Pocket
(optional)
Cut 1 fabric, 1 interfacing

CHARM ARTIST COLLECTIVE **BROOKLYN JACKET** **SIZES 18-34**

8
Back Neck
Facing
Cut 1 fabric on fold,
1 interfacing on fold

CHARM ARTIST COLLECTIVE **BROOKLYN JACKET** **SIZES 18-34**

1
Jacket Front,
D/DD Cup
Cut 2 fabric

FAUX WELT POCKET

CHARM ARTIST COLLECTIVE **BROOKLYN JACKET** **SIZES 18-34**

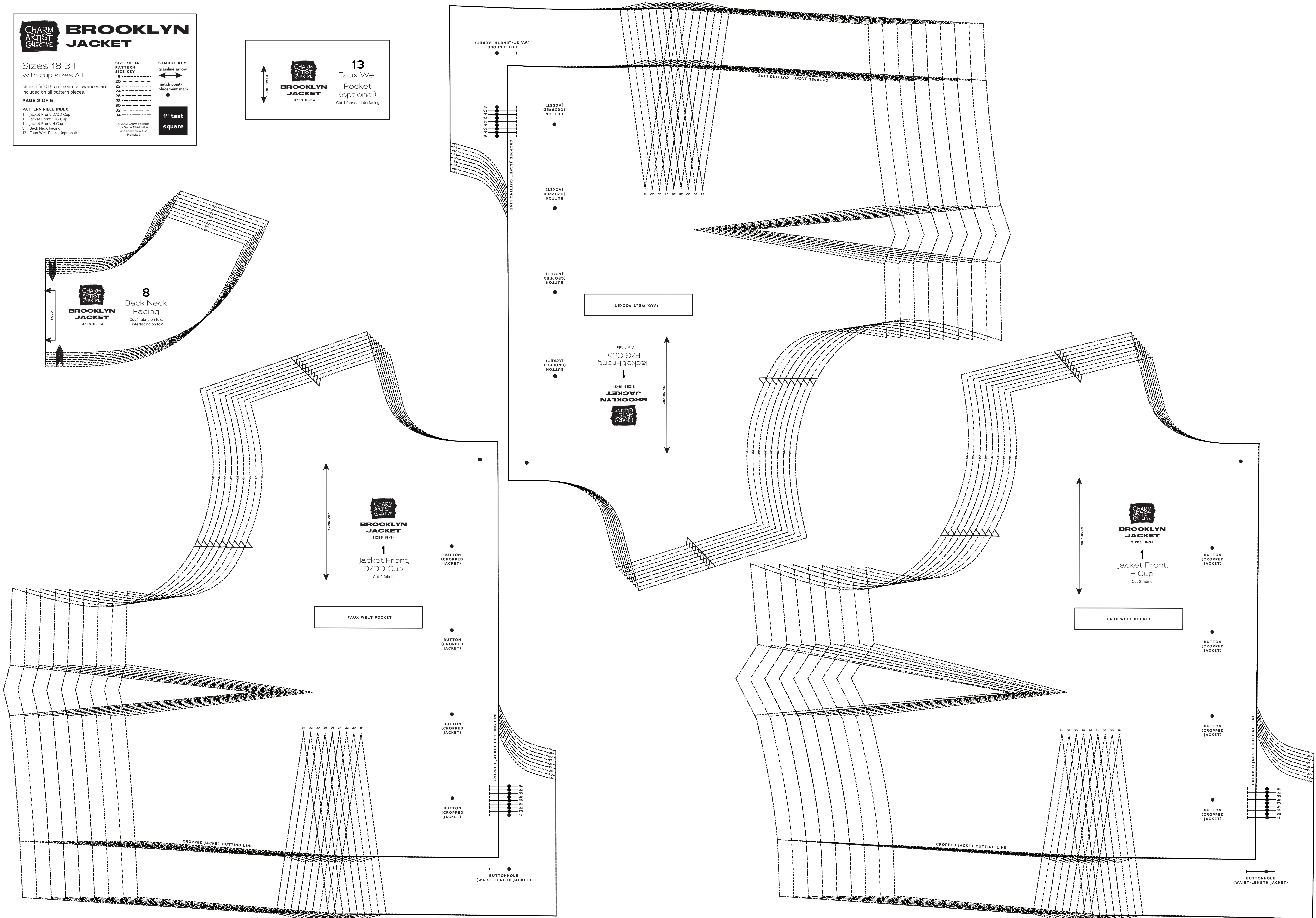
Jacket Front,
F/G Cup
Cut 2 fabric

FAUX WELT POCKET

CHARM ARTIST COLLECTIVE **BROOKLYN JACKET** **SIZES 18-34**

1
Jacket Front,
H Cup
Cut 2 fabric

FAUX WELT POCKET



CHARM ARTIST COLLECTIVE
BROOKLYN JACKET

Sizes 18-34
 with cup sizes A-H

5/8 inch (1.5 cm) seam allowances are included on all pattern pieces.

PAGE 4 OF 6
PATTERN PIECE INDEX
 6 Front Facing (for cropped version), A/C Cup
 6 Front Facing (for cropped version), D/DD Cup
 6 Front Facing (for cropped version), F/G Cup
 6 Front Facing (for cropped version), H Cup

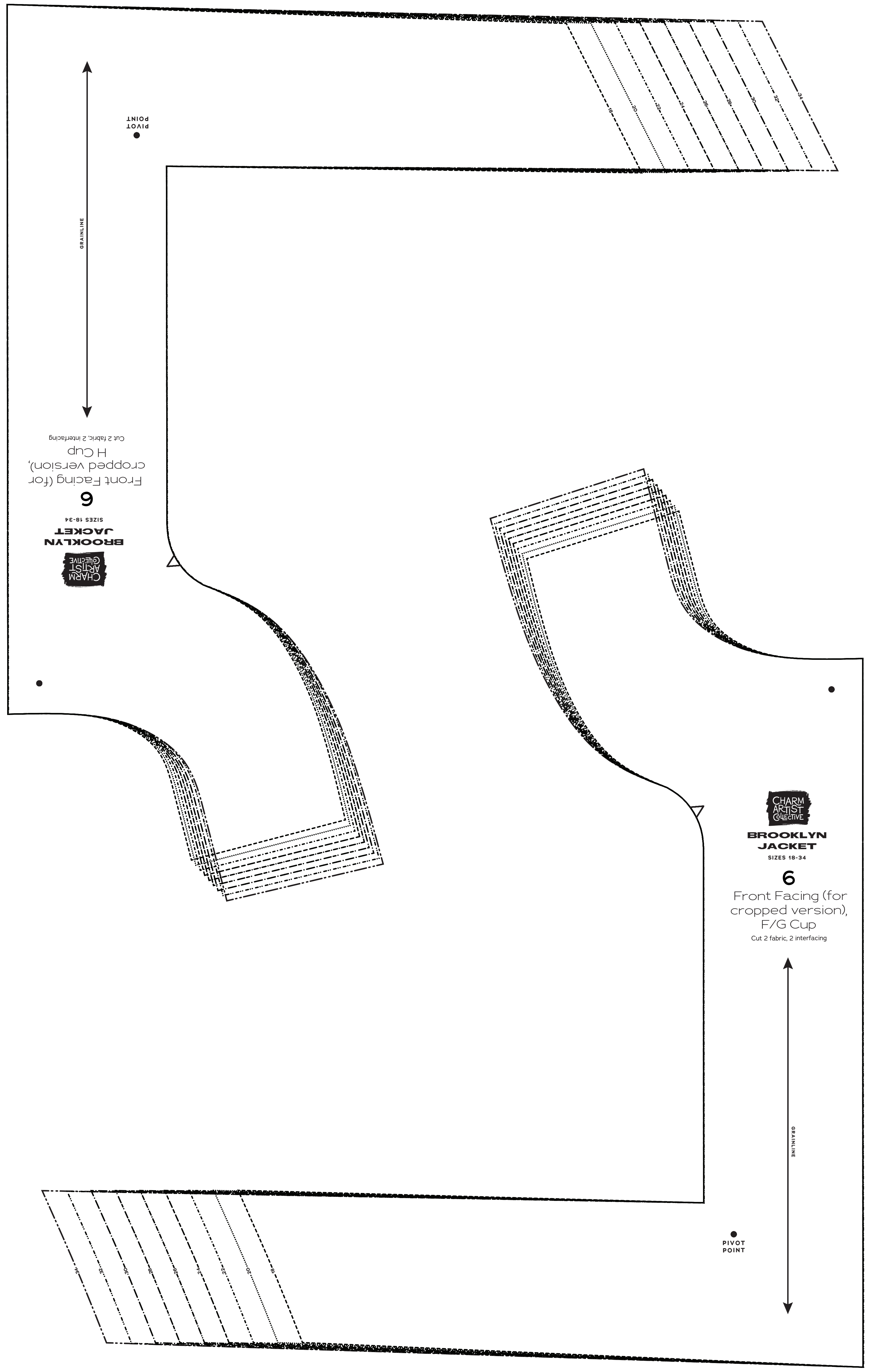
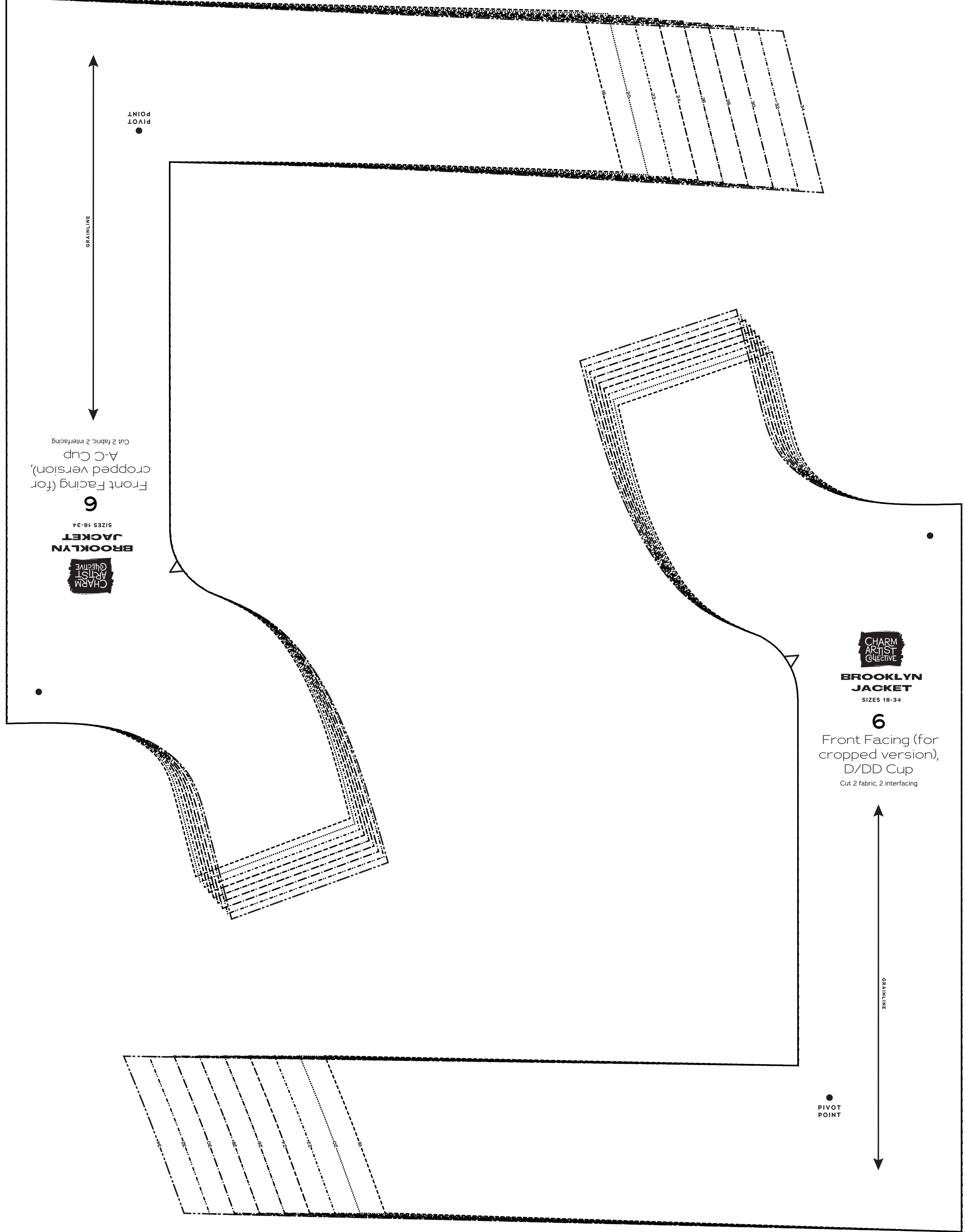
SIZE 18-34
PATTERN
SIZE KEY

18 -----
 20 -----
 22 -----
 24 -----
 26 -----
 28 -----
 30 -----
 32 -----
 34 -----

SYMBOL KEY
 grainline arrow
 match point/
 placement mark
 •

1" test square

© 2022 Charm Patterns
 for Series Distribution
 and Commercial Use
 Prohibited.



CHARM ARTIST COLLECTIVE
BROOKLYN JACKET

Sizes 18-34
 with cup sizes A-H

5/8 inch (1.5 cm) seam allowances are included on all pattern pieces.

PAGE 5 OF 6

PATTERN PIECE INDEX

- 7 Front Facing (waist-length version) A-C Cup
- 7 Front Facing (waist-length version) D/DD Cup
- 7 Front Facing (waist-length version) F/G Cup
- 7 Front Facing (waist-length version) H Cup
- 11 Front Lining, A/B Cup

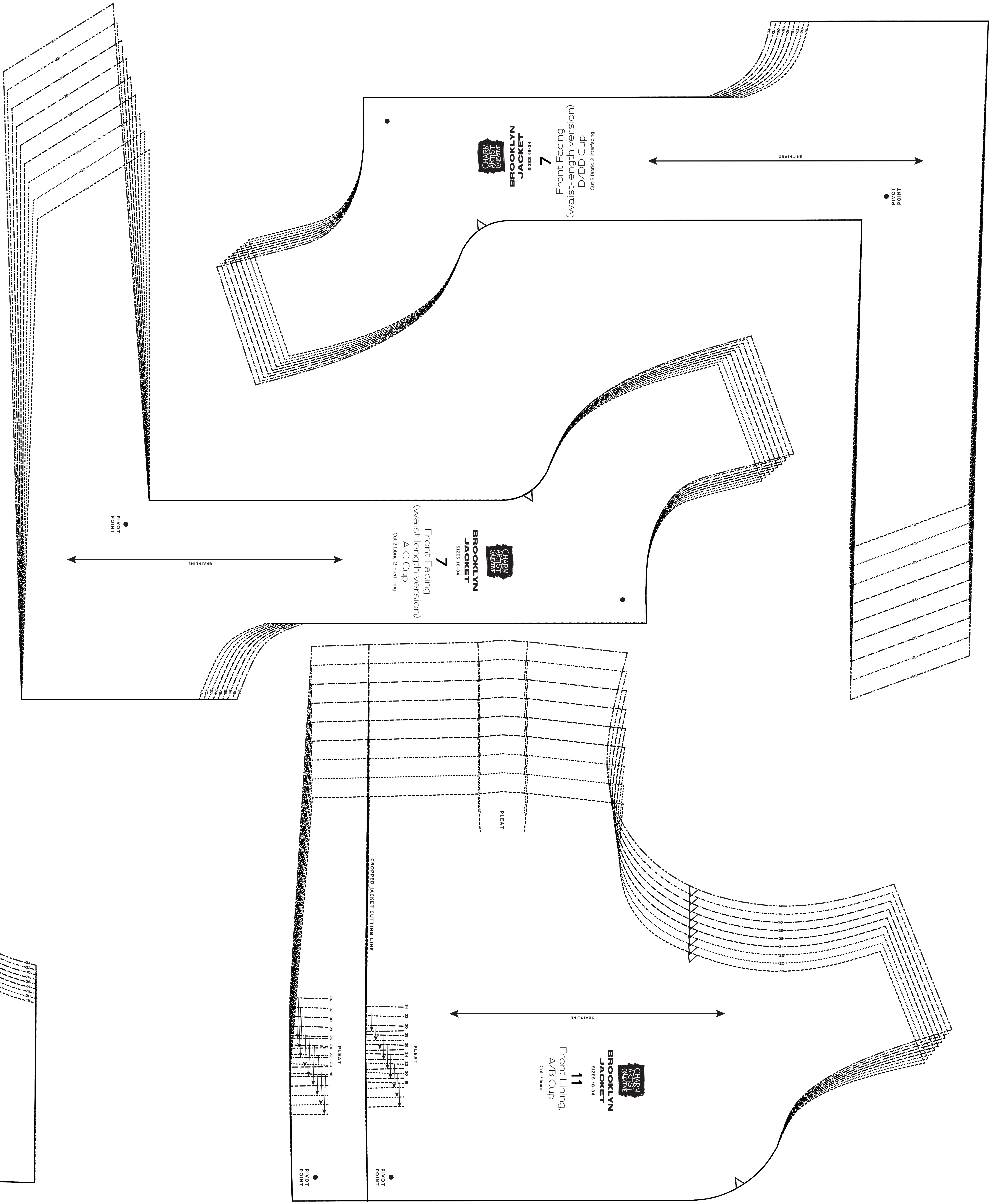
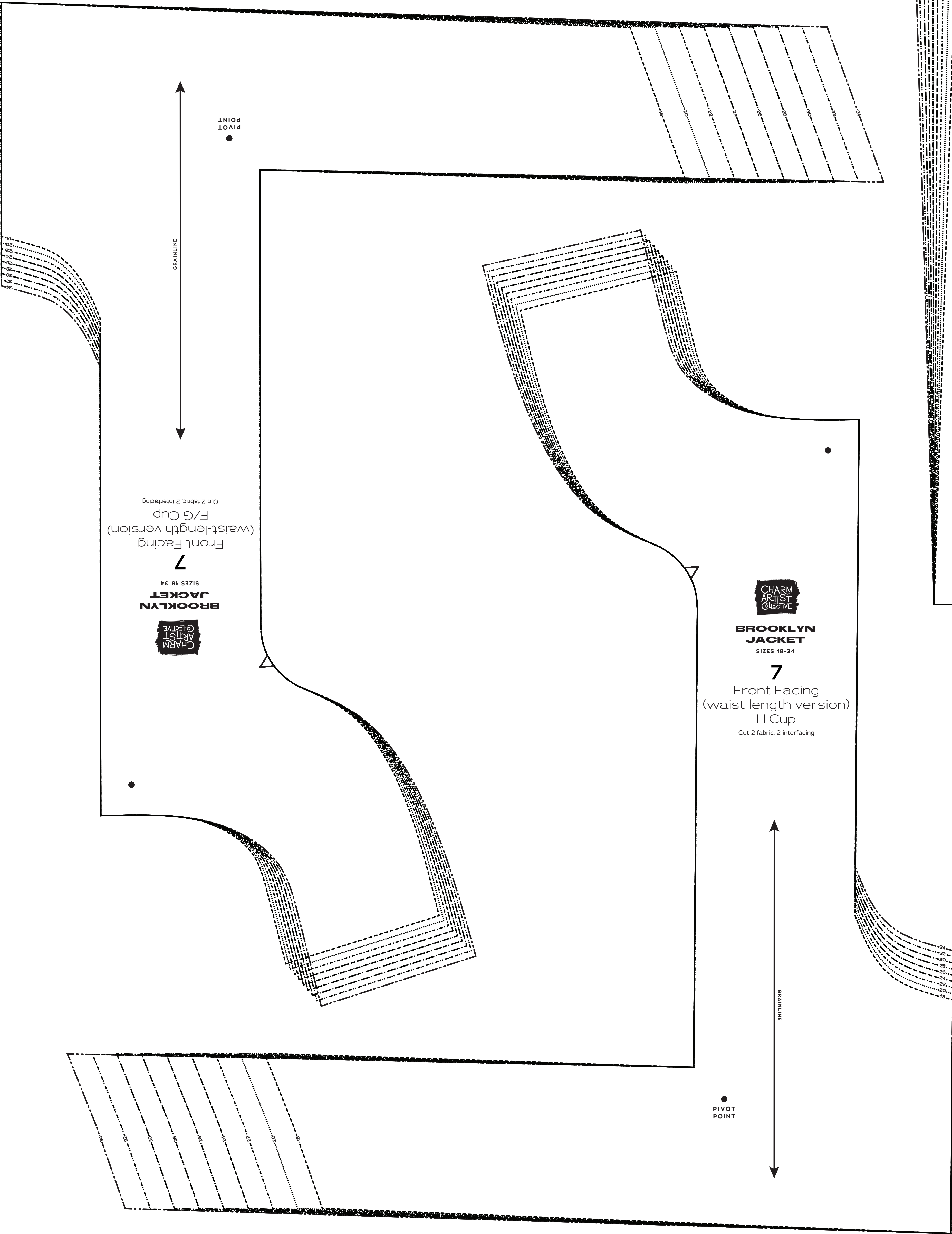
SIZE 18-34
PATTERN
SIZE KEY

- 18
- 20
- 22
- 24
- 26
- 28
- 30
- 32
- 34

SYMBOL KEY
 grainline arrow
 match point/
 placement mark

1" test square

© 2022 Charm Patterns
 All Rights Reserved
 No Sewing Machine
 and Commercial Use
 Permitted.



Sizes 18-34
with cup sizes A-H

5/8 inch (1.5 cm) seam allowances are included on all pattern pieces.

PAGE 6 OF 6

PATTERN PIECE INDEX
 11 Front Lining, C Cup
 11 Front Lining, D/DD Cup
 11 Front Lining, F/G Cup
 11 Front Lining, H Cup

SIZE 18-34
PATTERN
SIZE KEY
 18
 20
 22
 24
 26
 28
 30
 32
 34

SYMBOL KEY
 grainline arrow
 match point/
 placement mark
 1" test square

© 2022 Charm Patterns
 for Sewist Distribution
 and Commercial Use
 Prohibited.

