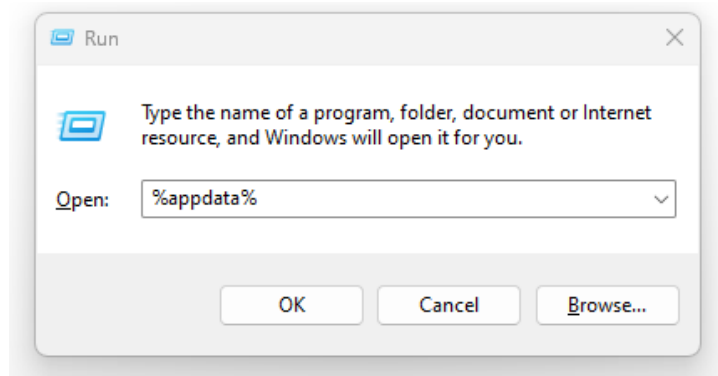


# CRESCENT COVE

Step-by-Step Installation

# Single Player

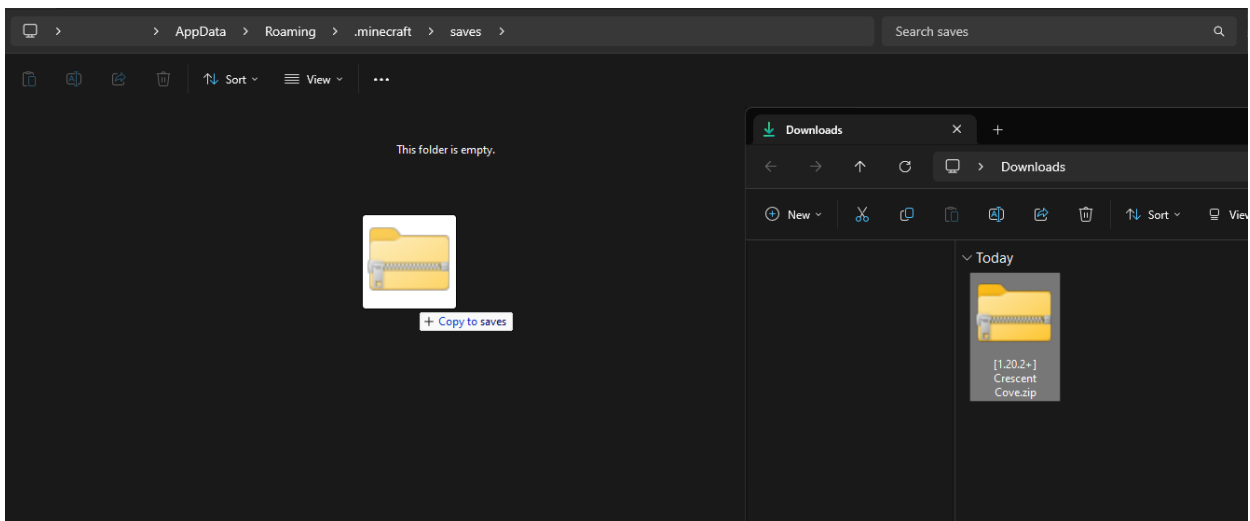
1. Download the '**[1.20.2+] Crescent Cove.zip**' file from the Patreon attachment section within this post.
2. Use the **Windows + R** key combination to bring up the menu shown below. Then type '**%appdata%**' into the field presented to you. Next, select the '**OK**' option.



3. Locate and enter the '**.minecraft**' folder within the new file explorer window that has opened.

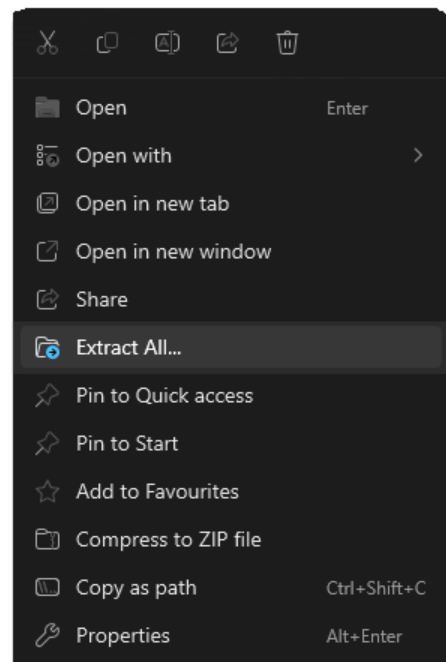
4. Now locate and open the **'saves'** folder.

5. Next, drag and drop the **'[1.20.2+] Crescent Cove.zip'** file inside of the **saves** folder as shown below.



6. Finally, right click the file and then select the **'Extract All'** option. Then hit the **'Extract'** button in the window that pops u

Once this has extracted, you will have successfully installed the map!



You can now load up your game and check the single player world list to load into it.

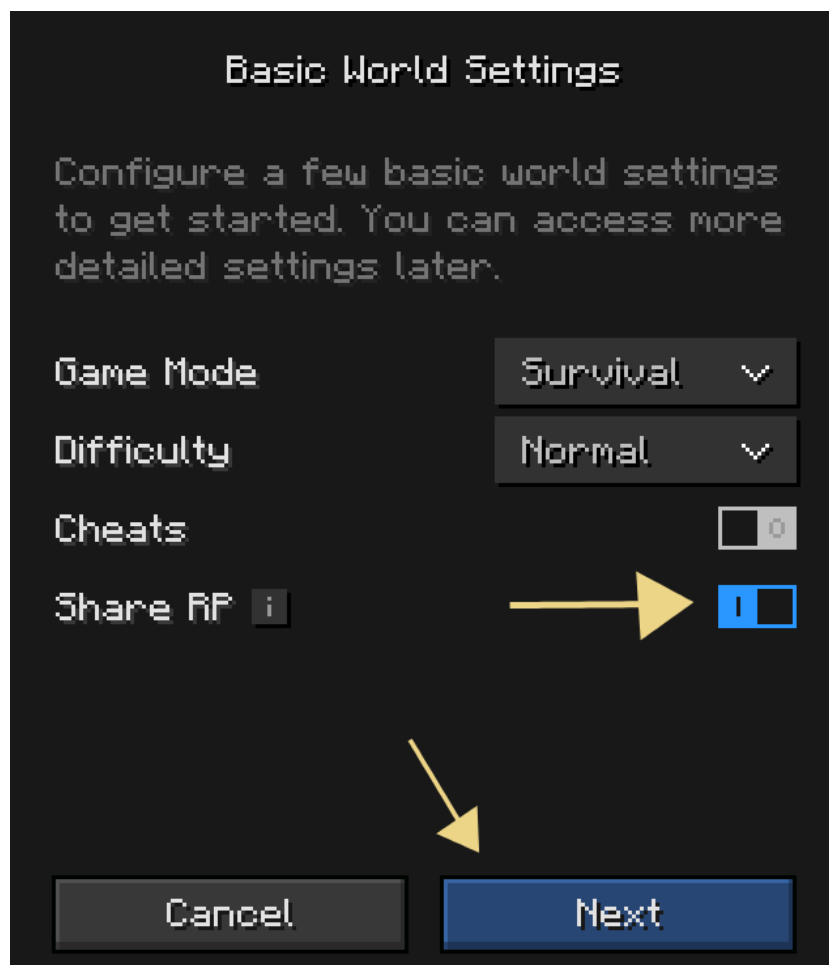
**Enjoy the map!**

# Multiplayer

1. Head over to the [Essential mod website](#) and download the mod. You can use their installer if you're unsure on how to install the mod manually. Ensure your friends also install this mod as they'll need it to join.
2. Perform the same steps as indicated in the singleplayer installation process to install the world.
3. Once you have loaded into the world, hit the 'ESC' key to bring up the pause menu.
4. Next, select the 'social' option on the right.

5. Now select the blue **'Add Friend'** button at the top and add the people that you would like to join the world to your friend's list.

6. Go back to the pause menu and then select the **'Invite'** option just above the 'Social' button and configure the options present to you. Make sure you enable the **'Share RP'** option and then hit **'Next'** to continue.



7. Click on your friends in the menu to invite them. Once the invite has been sent, your friends should be able to join via the Multiplayer menu which can be accessed from the main title screen.

**Enjoy the map!**

## Need further assistance?



Join the [Discord](#) and head over to our [support channel](#) – a tech expert will reach out to you soon to help!

