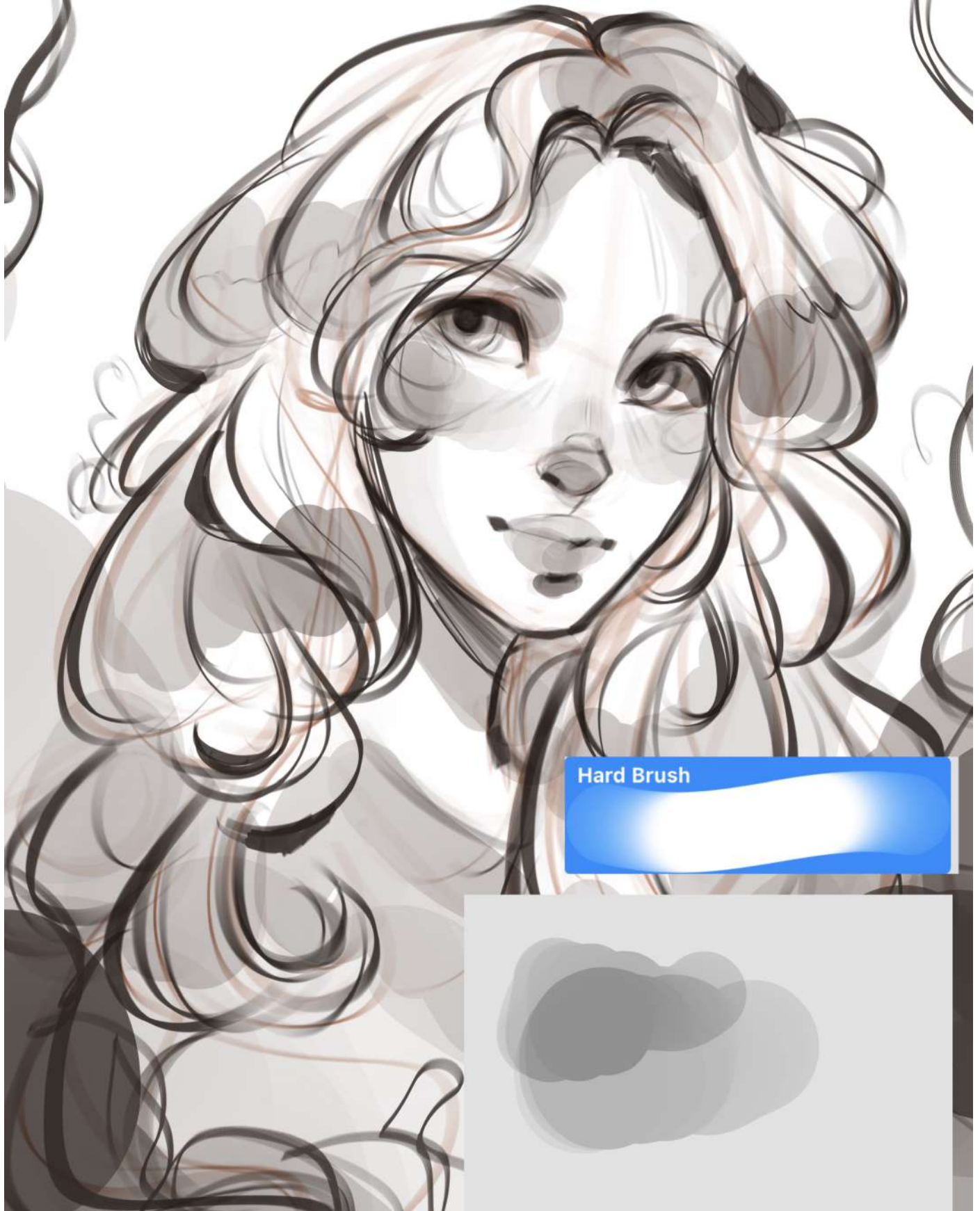


Step by step



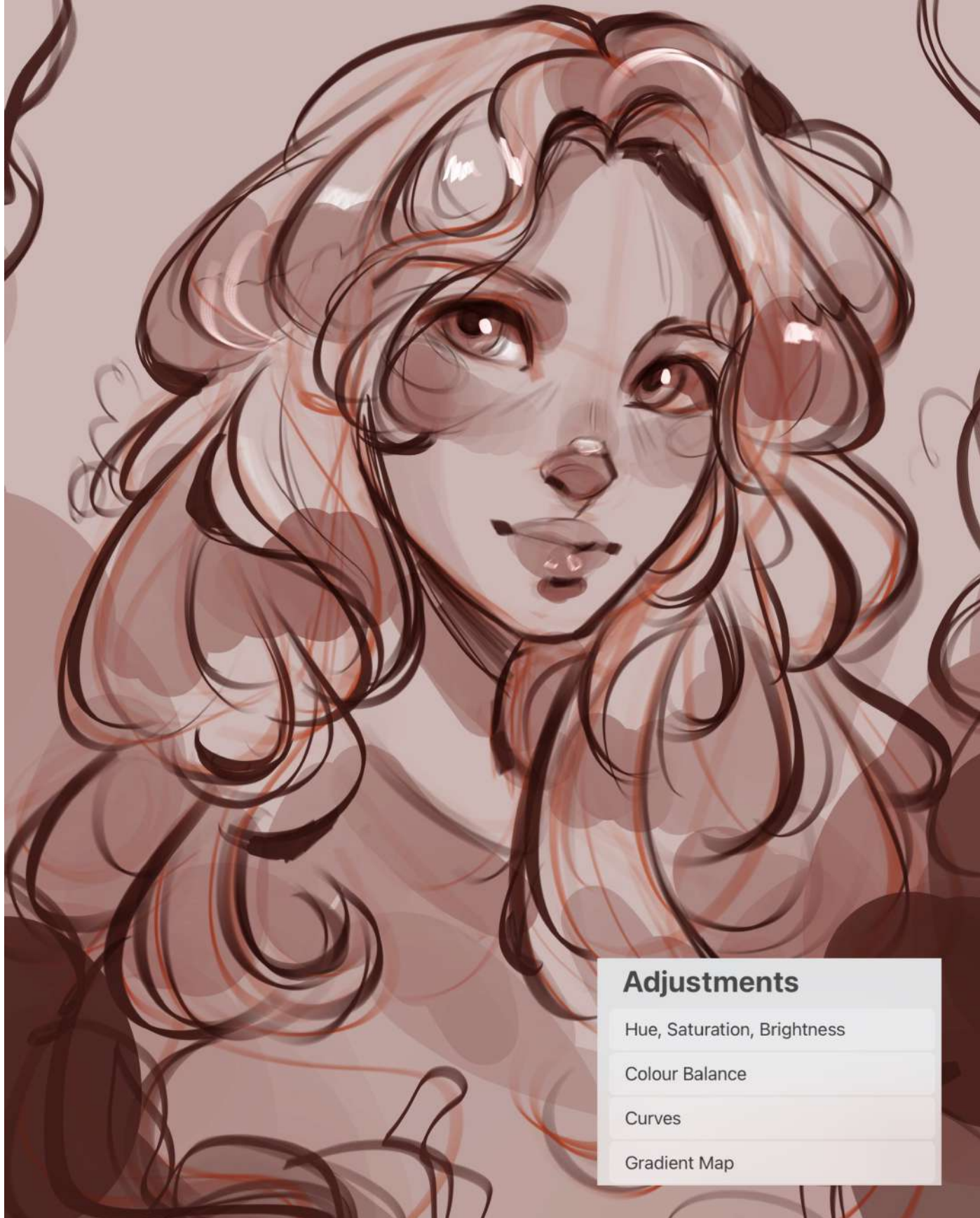
Sketchy Lineart

For this drawing I used a little different ways, especially I used the hard brush pen, which is part of the default process on Procreate. The sketch was done on red first, but it was quite accurate, so I just painted over it with the Lines brush, making sure to paint some areas in dark!



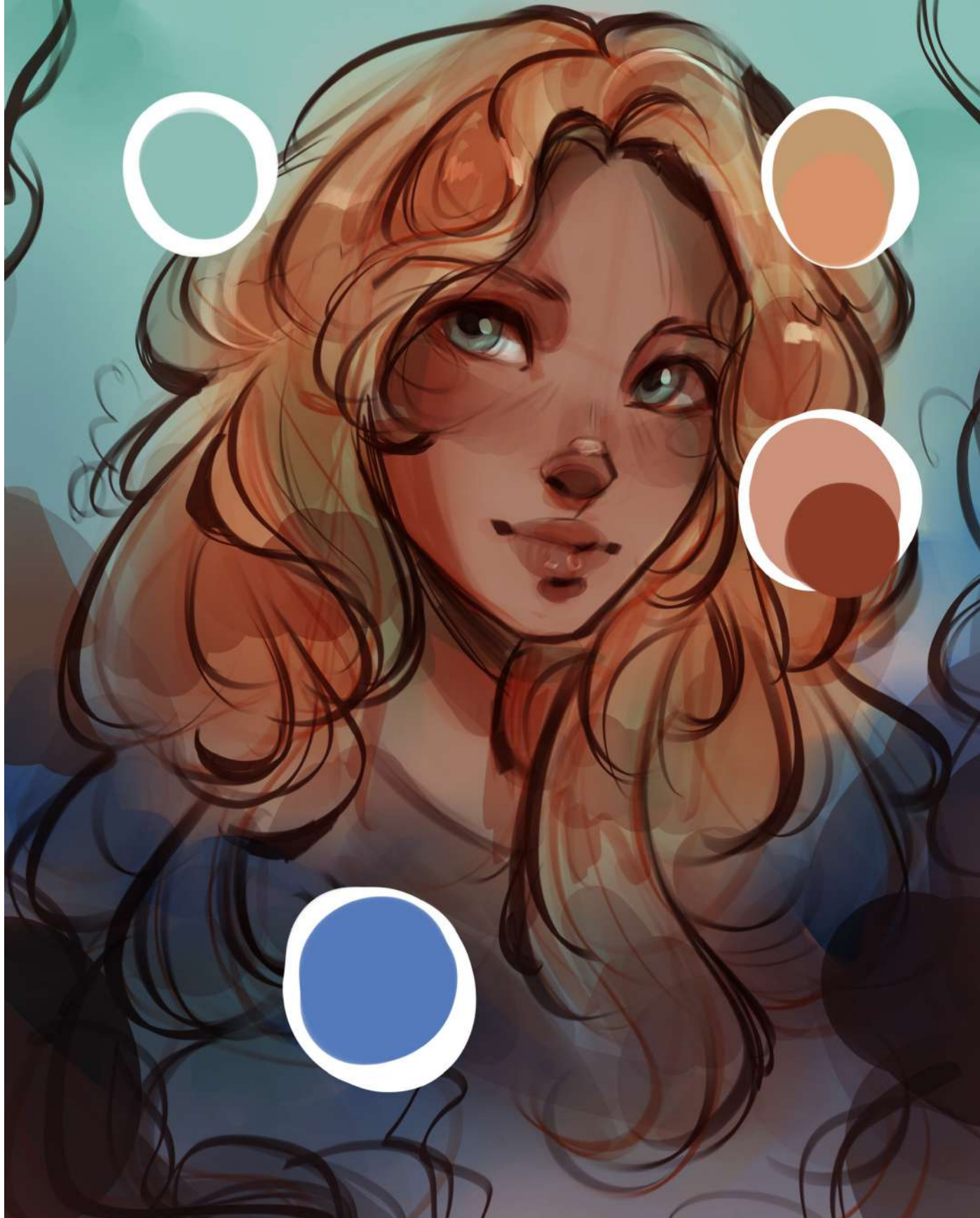
Simple Shading

This time I'm starting with grayscale, but in a really simple way! Just using the hard brush (default), I added some brushstrokes in the nose, hair, lips... making sure the pressure could help with add more or less opacity.



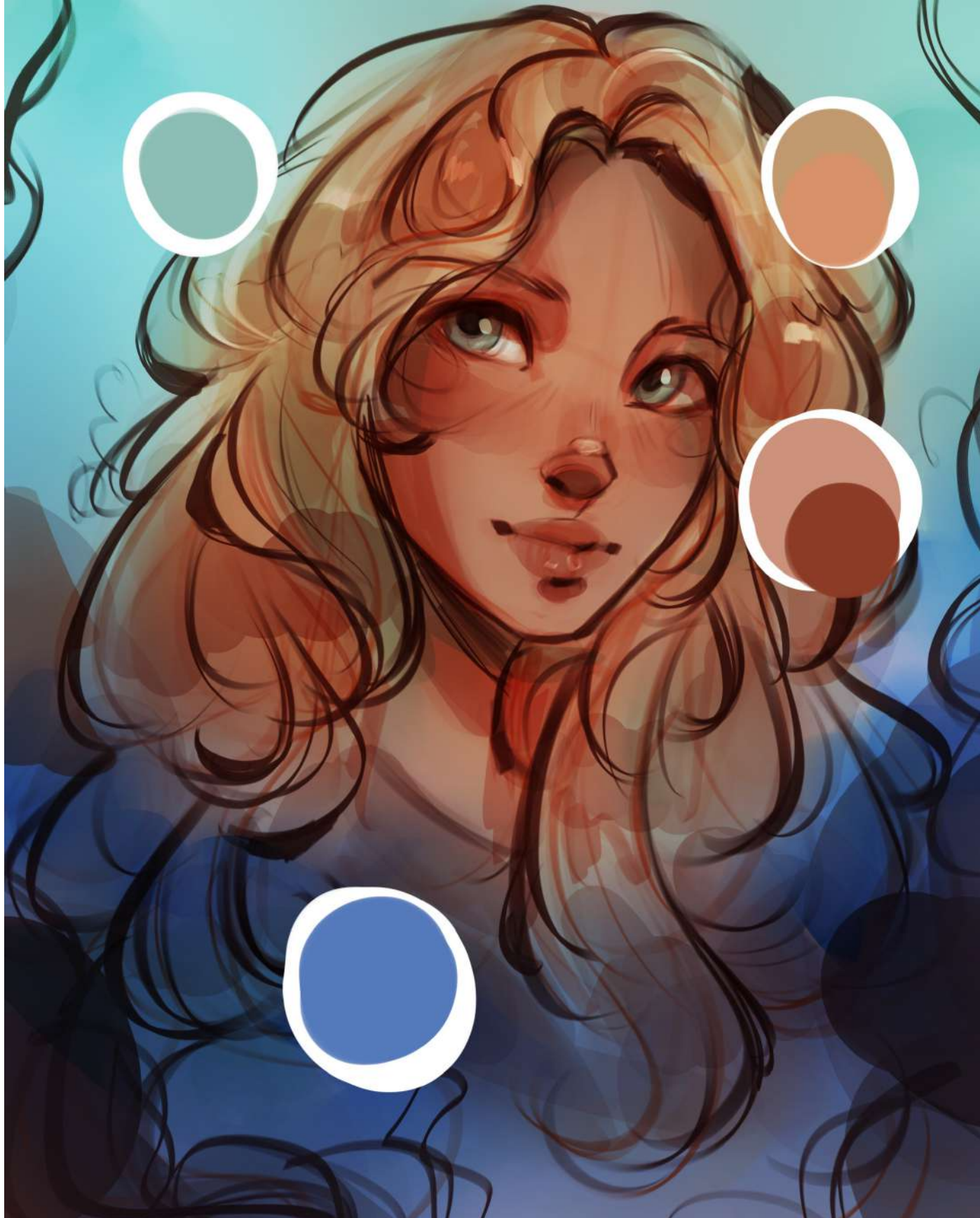
Coloring

As I always do when painting in grayscale, I played with the adjustments until I got a reddish tone as a base color to start painting from here.



Coloring

I added a new layer, this time in multiply mode, and using the airbrush (so the edges aren't very defined here) I started to add different colors. I wanted to make some contrast between orange, blue and green.

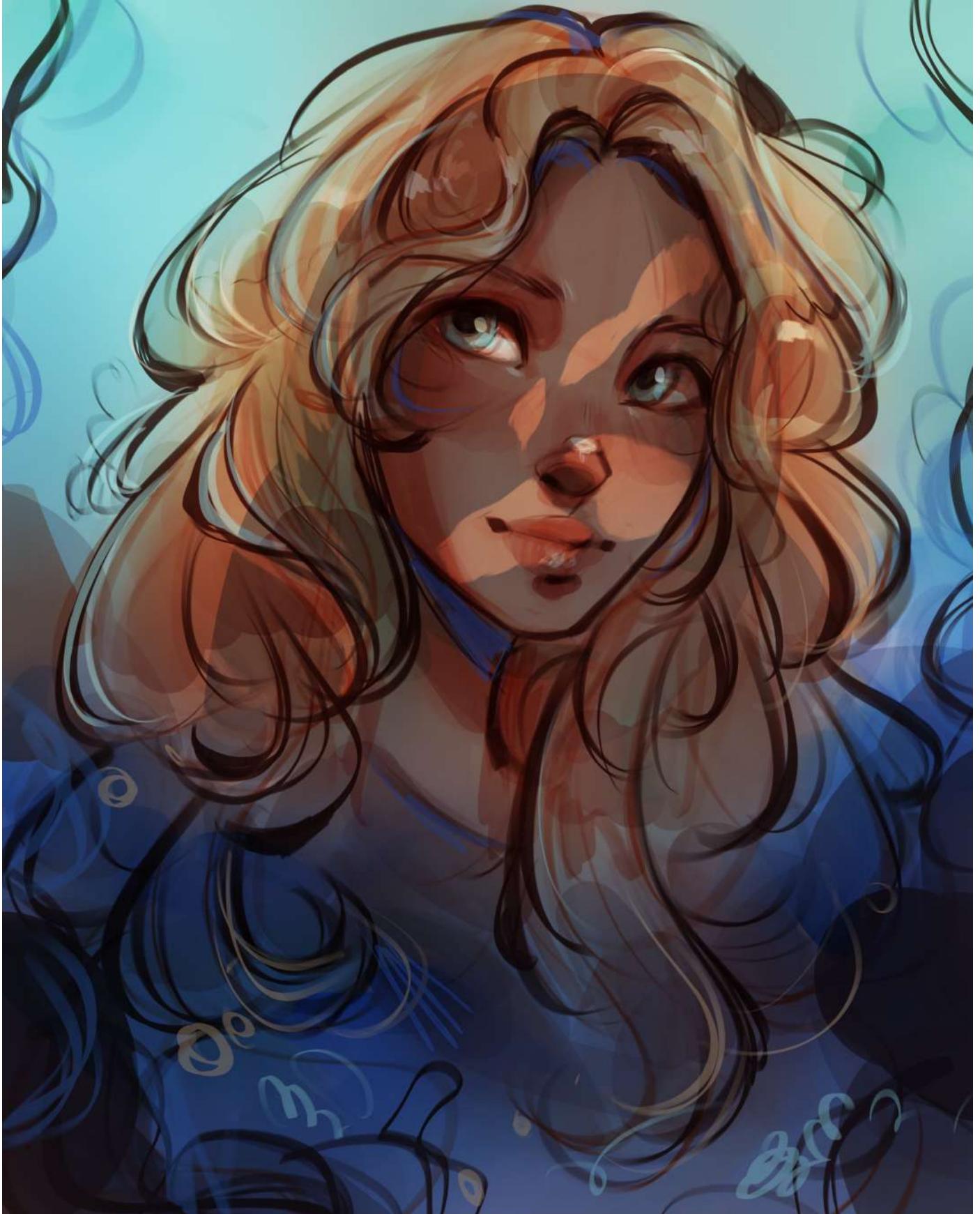


Coloring

I duplicated that exact layer which contained the colors as multiply.

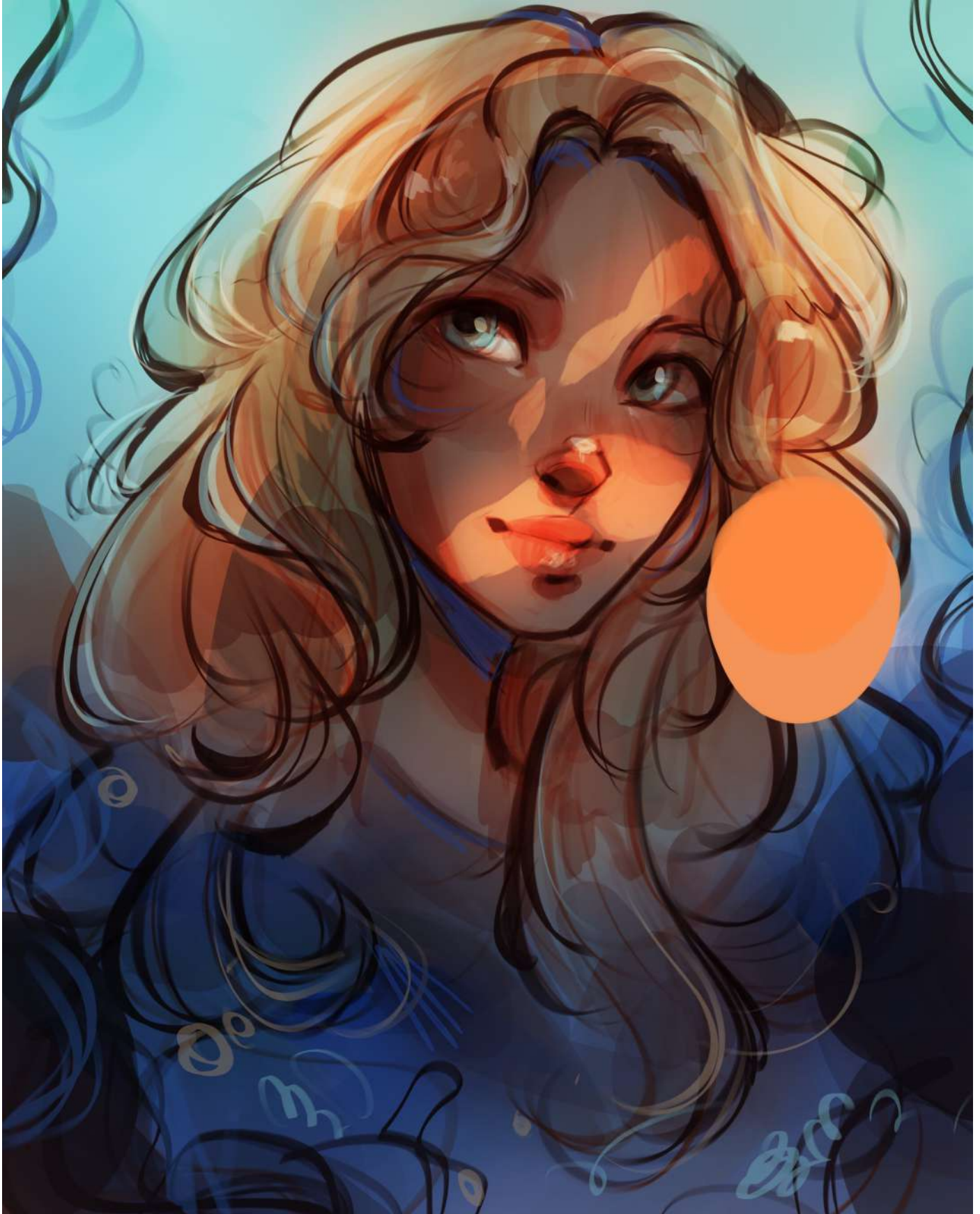
But this time, instead, the mode will be overlay.

This way, I could make everything look more vibrant!



Shading

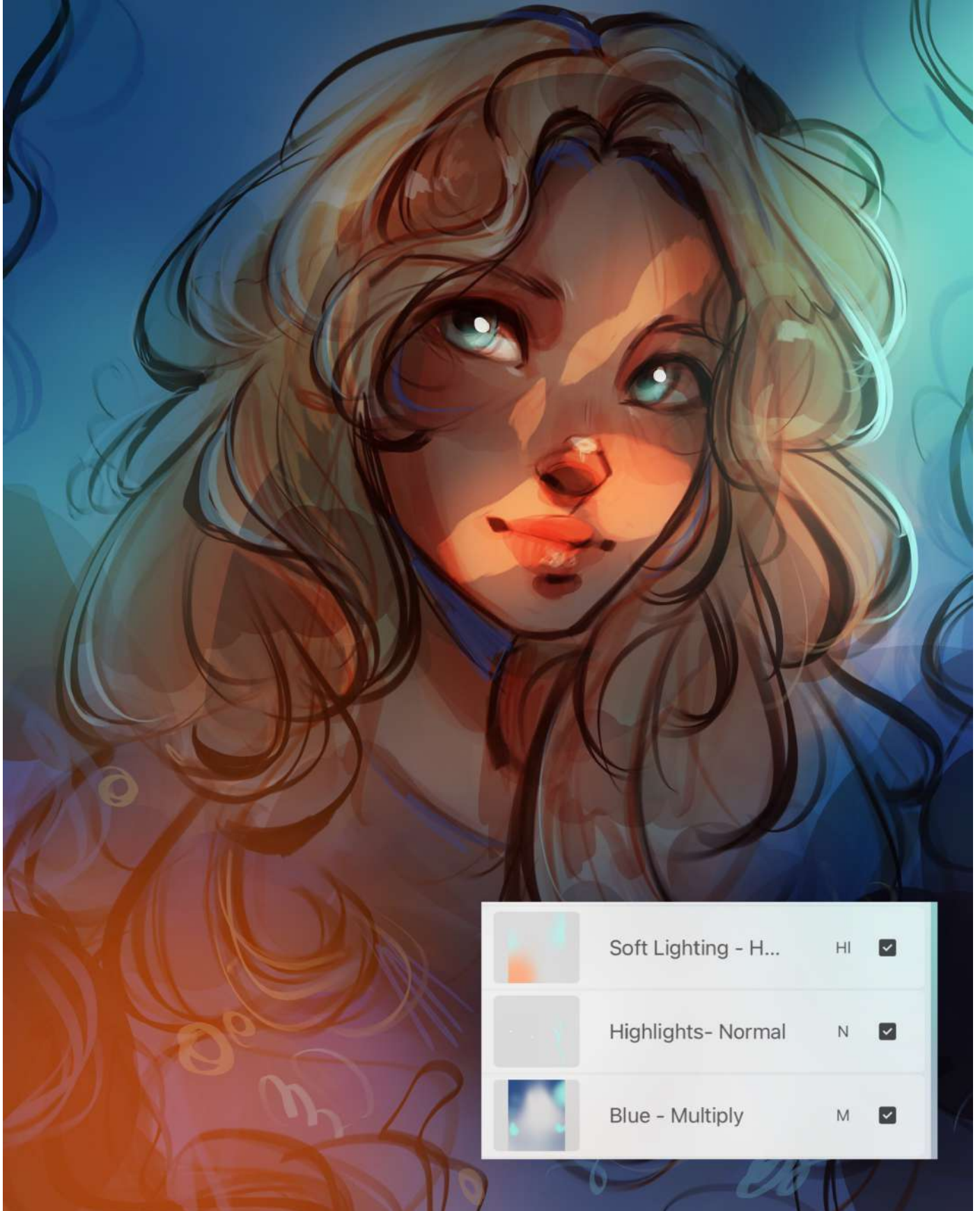
This one maybe didn't make very sense, but this was n experiment of lighting. I added a new layer in a blue color and erase those areas I found interesting.



Lighting

I added a new layer, again in overlay mode over the previous multiply layer.

For this one, I just used the airbrush and mixed some orange and some touches of red.



Editions

The last step was basically a mix of three new layers: multiply with blues to make the darken areas, normal mode one to add some details painting over, and the las one, soft light mode, to add that red tone and the blue highlights!

I hope this one was useful sweeties!