

Barbara

BODICE

Sizes 2-20
with cup sizes A-H

5/8 inch (1.5 cm) seam allowances
are included on all pattern pieces.

PAGE 1 OF 2

PATTERN PIECE INDEX

- 3 Bodice Side Front, A Cup
- 3 Bodice Side Front, B/C Cup
- 3 Bodice Side Front, D/DD Cup
- 3 Bodice Side Front, F/G Cup
- 3 Bodice Side Front, H Cup
- 4 Bodice Center Back, Thin Strap
- 5 Bodice Center Back, Wide Strap
- 6 Bodice Side Back
- 7 Thin Tie Strap
- 8 Wide Gathered Strap



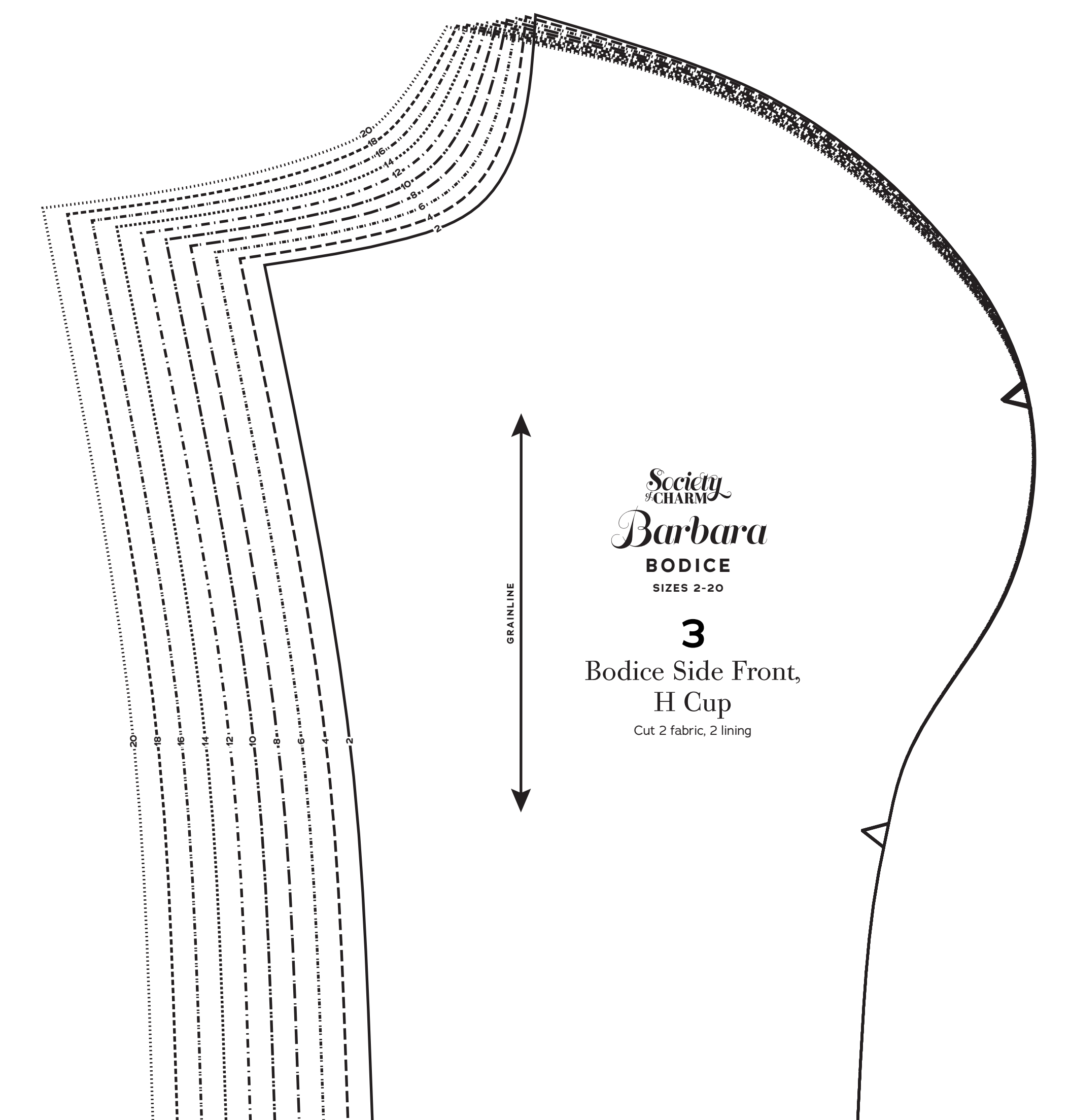
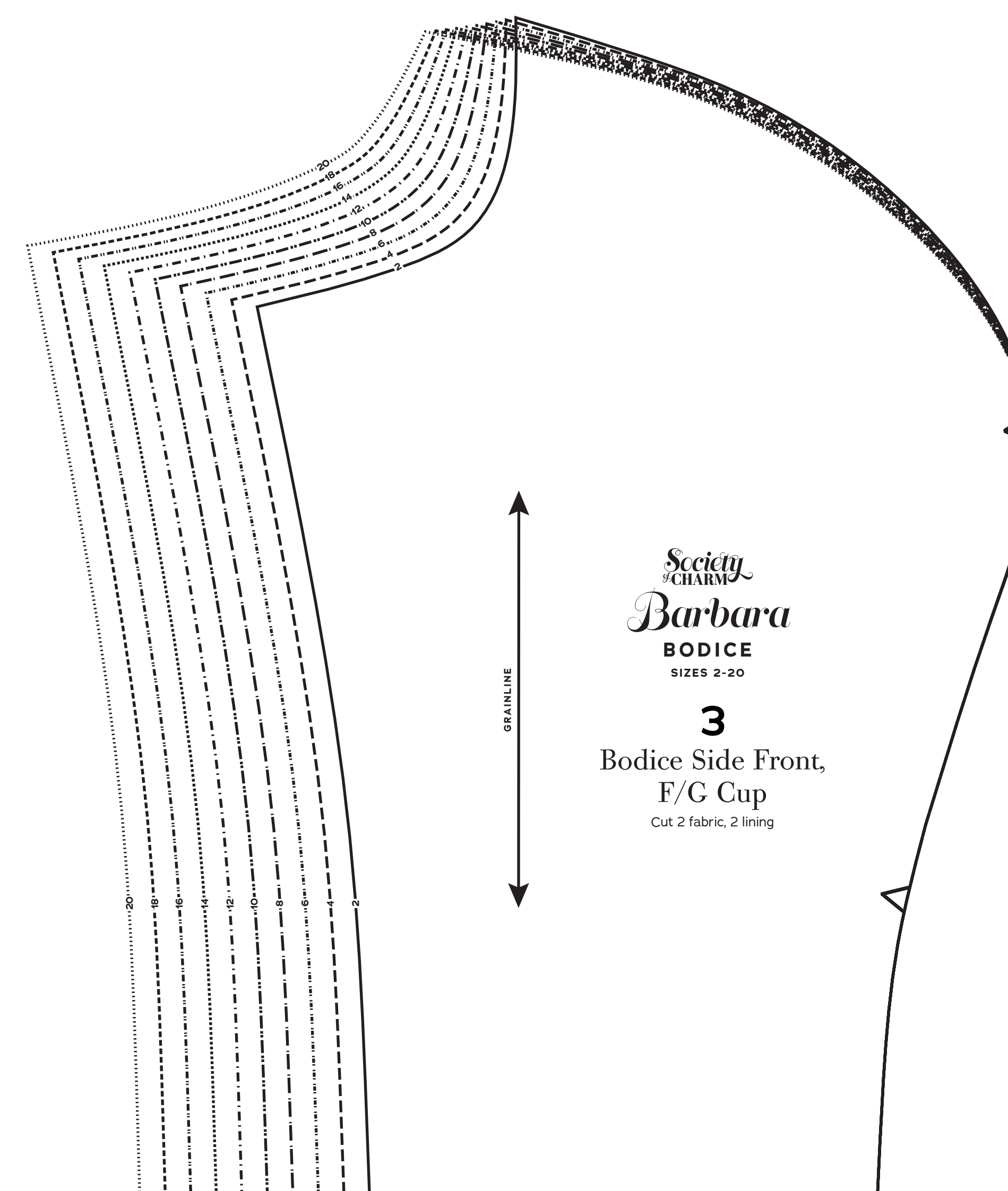
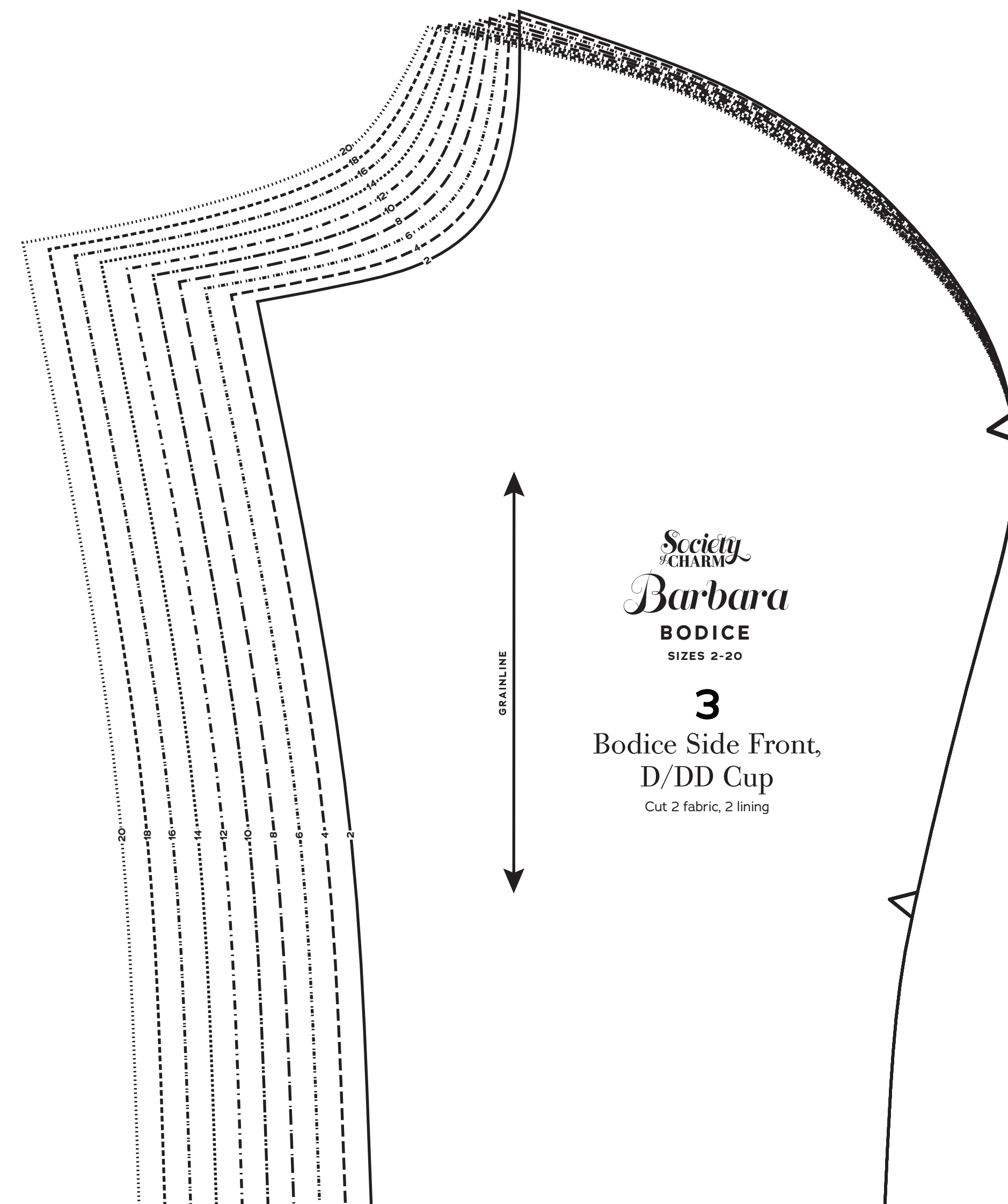
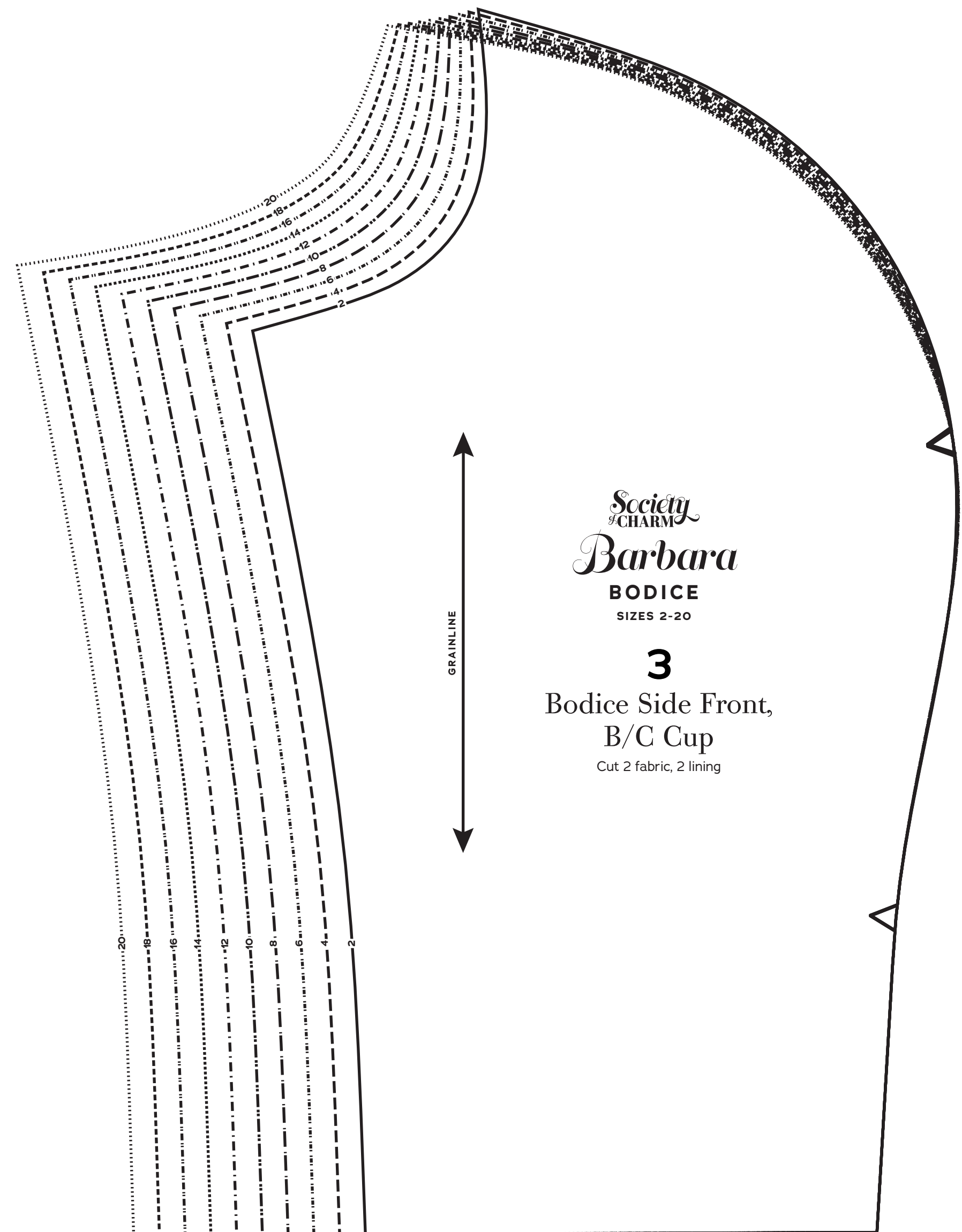
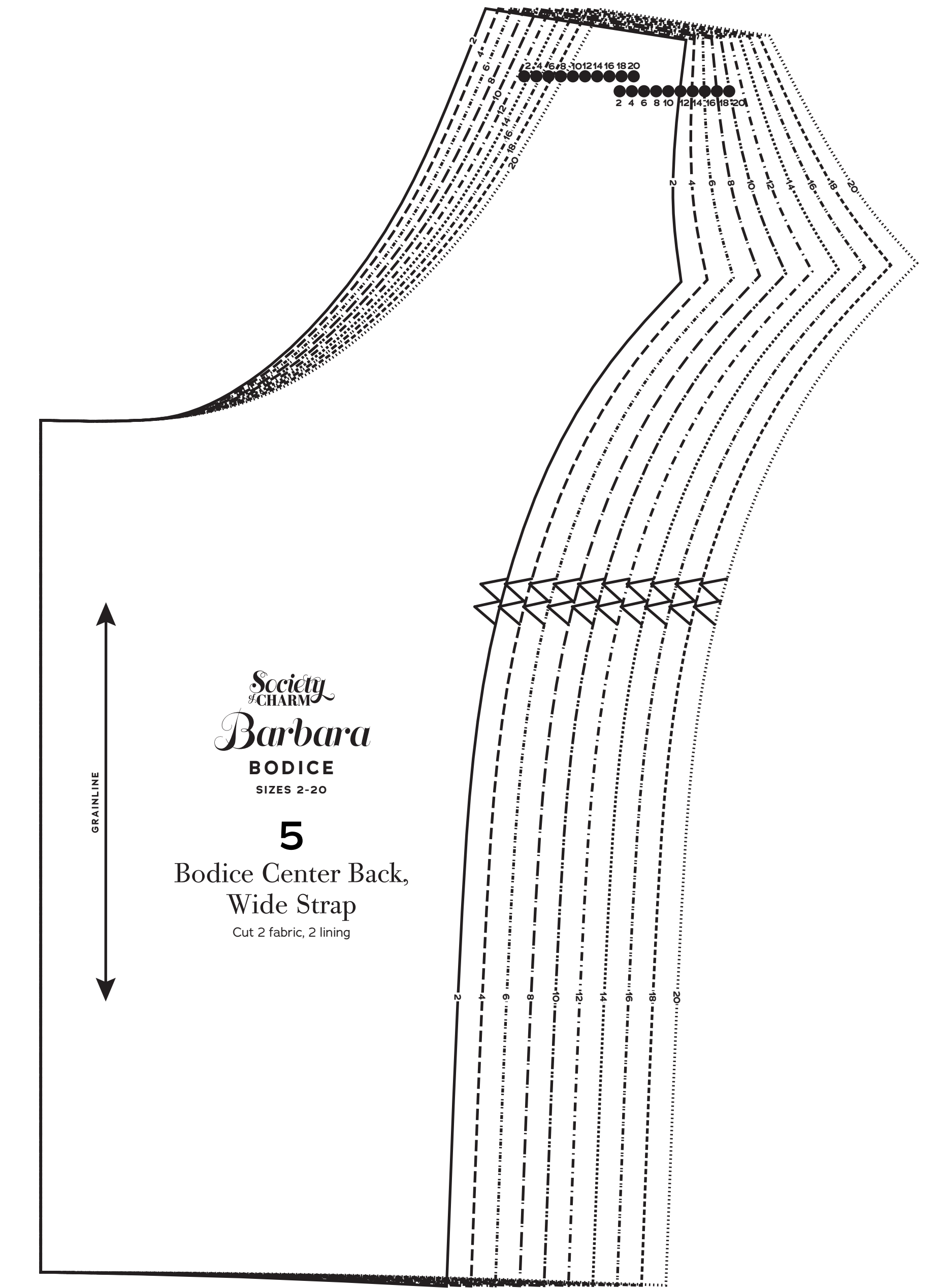
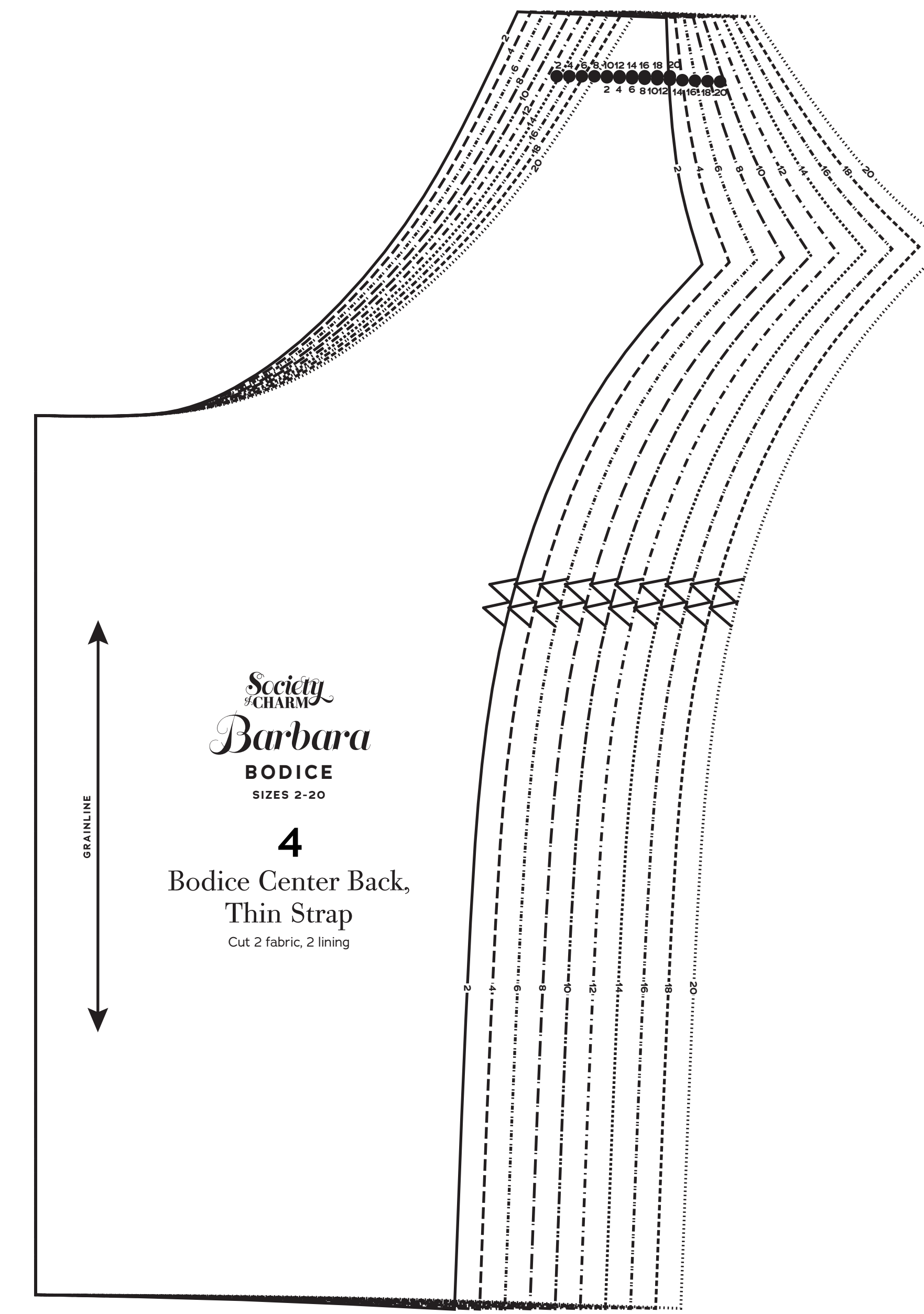
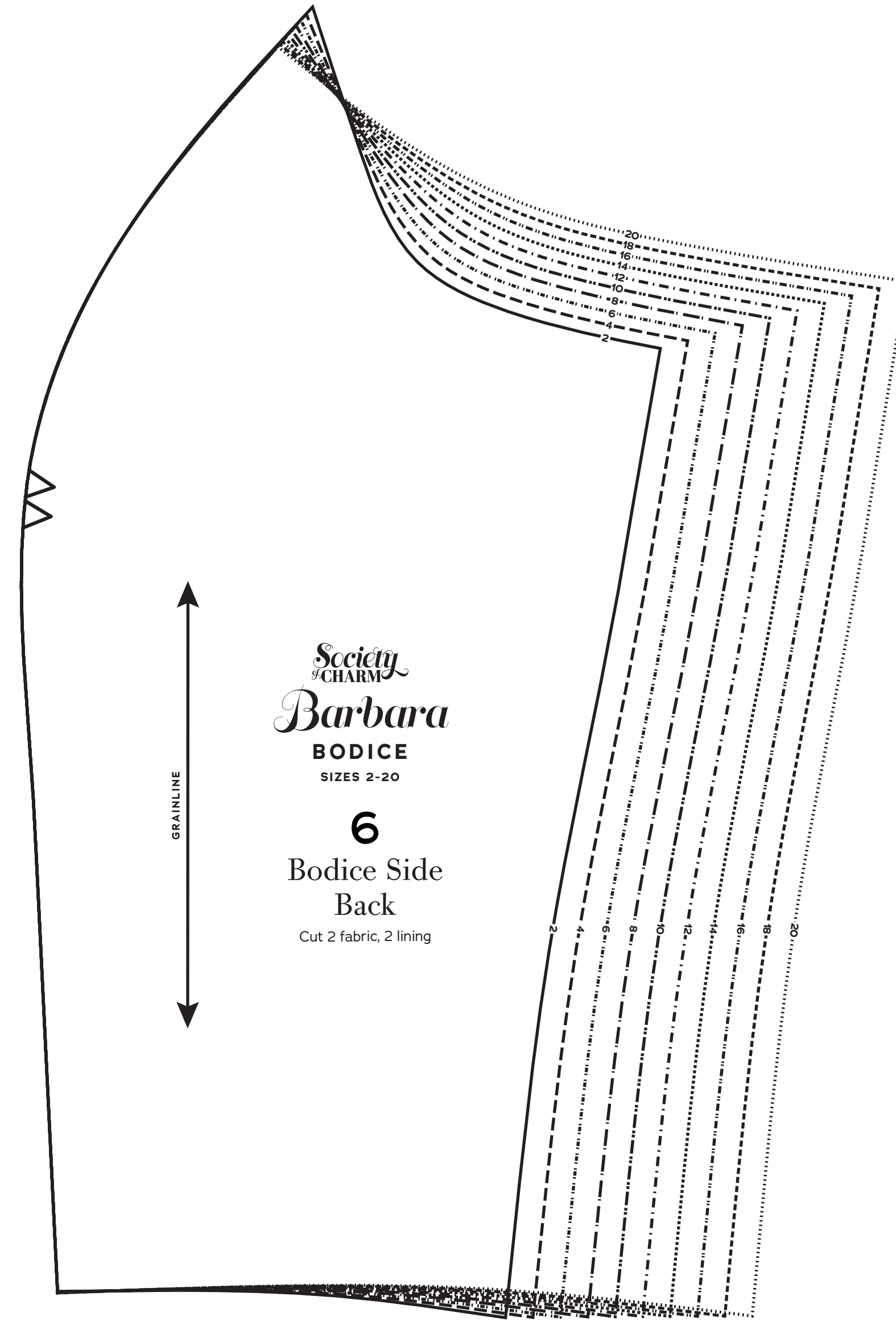
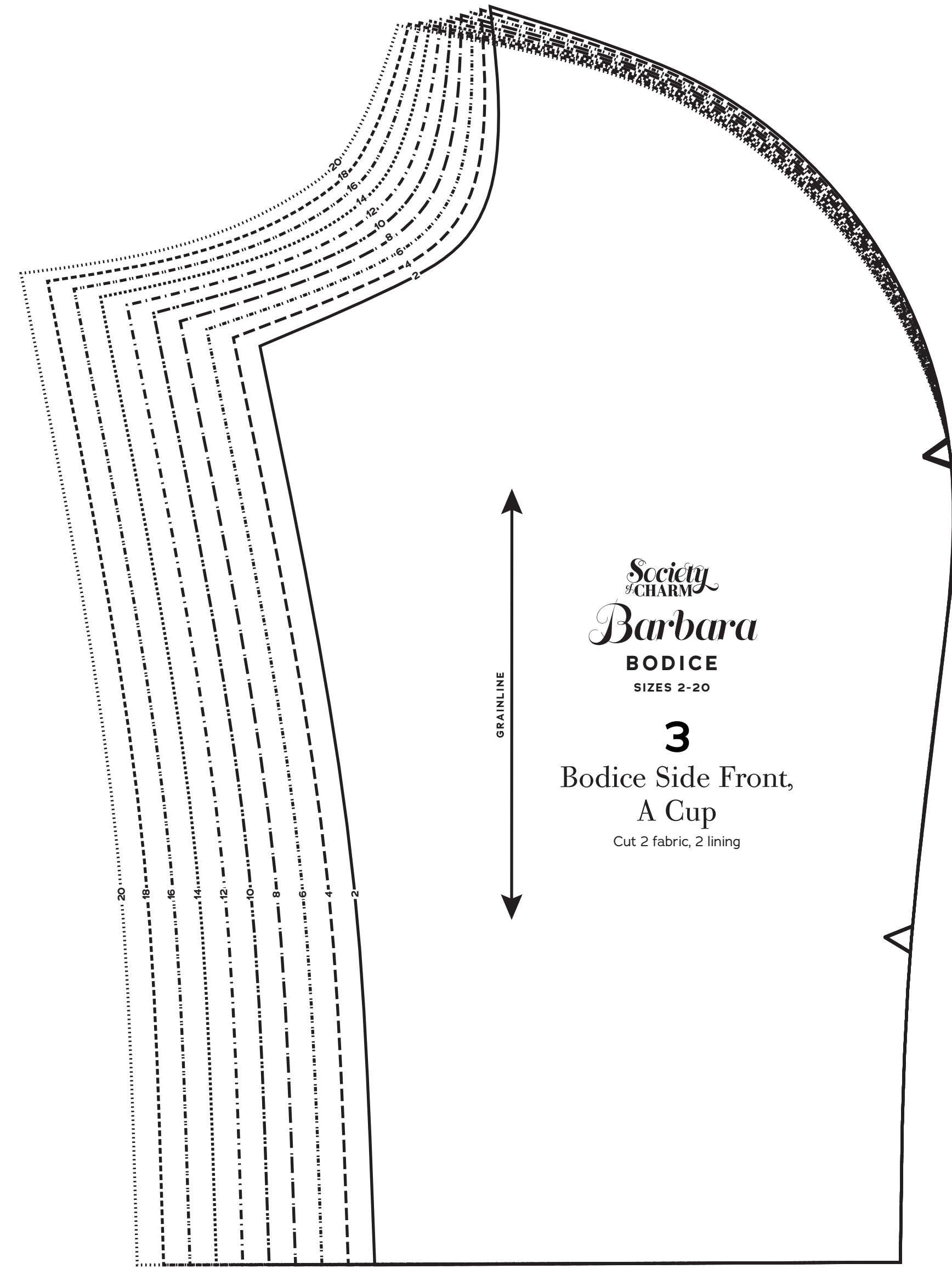
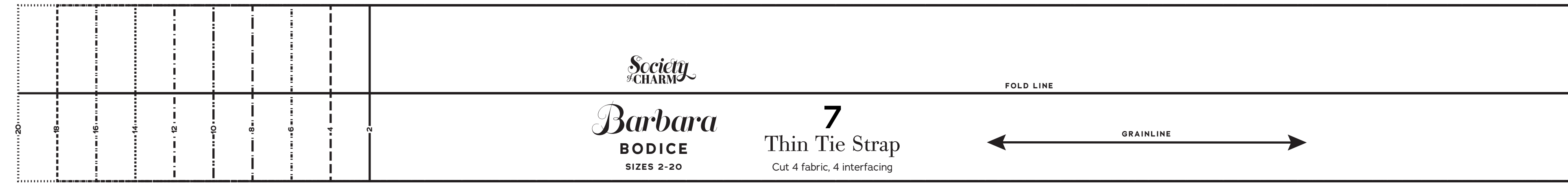
SIZES 2-20
PATTERN
SIZE KEY

SYMBOL KEY
grainline arrow
match point/
placement mark

© 2023 Charm Patterns
by Serita Davidson
and Commercial Use
Prohibited.

1 in
test
square

2 cm
test
square



Barbara

BODICE

Sizes 2-20
with cup sizes A-H

5/8 inch (1.5 cm) seam allowances
are included on all pattern pieces.

PAGE 2 OF 2

PATTERN PIECE INDEX

- 1 Bodice Center Front, Thin Strap, A Cup
- 1 Bodice Center Front, Thin Strap, B-DD Cup
- 1 Bodice Center Front, Thin Strap, F-H Cup
- 2 Bodice Center Front, Wide Strap, A Cup
- 2 Bodice Center Front, Wide Strap, B-DD Cup
- 2 Bodice Center Front, Wide Strap, F-H Cup



SIZES 2-20
PATTERN
SIZE KEY

- 2
- 4
- 6
- 8
- 10
- 12
- 14
- 16
- 18
- 20

SYMBOL KEY
grainline arrow
match point/
placement mark

© 2023 Charm Patterns
by Selva, Dierckson
and Commercial Use
Prohibited

1 in
test
square

2 cm
test
square

