



BROOKLYN JACKET

A PATREON EXCLUSIVE PATTERN

© 2022 Charm
Patterns by Gertie



KEY SKILLS

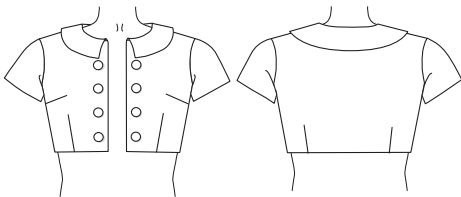
- sewing a faux welt pocket
- fully lining a jacket with facings
- creating perfect covered buttons
- crowding stitches to ease a sleeve cap



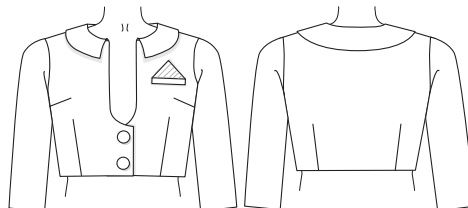
I'm delighted to bring you the Brooklyn Jacket, inspired by the many smart jackets worn by the marvelous Mrs. Maisel on the iconic show. The Brooklyn Jacket is a fully lined and fitted jacket in two lengths, with two versatile sleeve options. Make it in a cropped version with darling covered buttons (to match your Ginger Sailor Pants perhaps?), or in the waist-length version with a sophisticated front opening. With an optional faux welt breast pocket and pocket square, you have many mix-and-match opportunities to sew your own elegant fantasy!

xoxo, *Gertie*

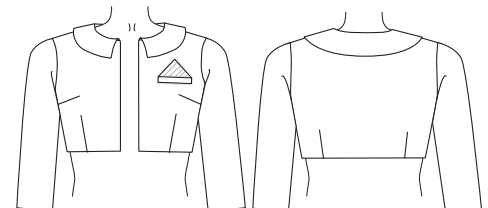
Cropped Jacket with decorative buttons and cap sleeves



Waist-Length Jacket with functioning buttons, three-quarter sleeves, faux welt pocket, and pocket square



Cropped Jacket without buttons, three-quarter sleeves, faux welt pocket, and pocket square



SIZE CHART

The Brooklyn Jacket is sized in women's US 2–20 and 18–34, A–H cup sizes. Please use the chart below to pick your size. The High Bust measurement should be taken above your breasts and the Full Bust measurement should be taken at the fullest part of your bustline. Take the waist measurement at the smallest part of your torso. Note that it is best to choose your size by your bust measurements (and add or remove from the side seams at the waist if needed).

If you're in our Artist, Beat Princess, or Bohemian Princess tiers, make sure to check out our Fit Clinic series to learn more about measuring yourself, choosing a size, and making fit adjustments. Not sure which size range to choose? Read more about our [18-34 size range here!](#)

SIZES

2-20	2	4	6	8	10	12	14	16	18	20
High Bust	29 in 73.7 cm	31 in 78.7 cm	33 in 83.8 cm	35 in 88.9 cm	37 in 94 cm	39 in 99 cm	41 in 104.1 cm	43 in 109.2 cm	45 in 114.3 cm	47 in 119.4 cm
Bust A cup	30.5 in 77.5 cm	32.5 in 82.5 cm	34.5 in 87.6 cm	36.5 in 92.7 cm	38.5 in 97.8 cm	40.5 in 102.9 cm	42.5 in 108 cm	44.5 in 113 cm	46.5 in 118.1 cm	48.5 in 123.2 cm
Bust B/C cup	31 in 78.7 cm	33 in 83.8 cm	35 in 88.9 cm	37 in 94 cm	39 in 99 cm	41 in 104.1 cm	43 in 109.2 cm	45 in 114.3 cm	47 in 119.4 cm	49 in 124.5 cm
Bust D/DD cup	32 in 81.3 cm	34 in 86.4 cm	36 in 91.4 cm	38 in 96.5 cm	40 in 101.6 cm	42 in 106.7 cm	44 in 111.8 cm	46 in 116.8 cm	48 in 121.9 cm	50 in 127 cm
Bust F/G cup	33 in 83.8 cm	35 in 88.9 cm	37 in 94 cm	39 in 99 cm	41 in 104.1 cm	43 in 109.2 cm	45 in 114.3 cm	47 in 119.4 cm	49 in 124.5 cm	51 in 129.5 cm
Bust H cup	34 in 86.4 cm	36 in 91.4 cm	38 in 96.5 cm	40 in 101.6 cm	42 in 106.7 cm	44 in 111.8 cm	46 in 116.8 cm	48 in 121.9 cm	50 in 127 cm	52 in 132.1 cm
Waist	24 in 61 cm	26 in 66 cm	28 in 71.1 cm	30 in 76.2 cm	32 in 81.3 cm	34 in 86.4 cm	36 in 91.4 cm	38 in 96.5 cm	40 in 101.6 cm	42 in 106.7 cm
Hips	36 in 91.4 cm	38 in 96.5 cm	40 in 101.6 cm	42 in 106.7 cm	44 in 111.8 cm	46 in 116.8 cm	48 in 121.9 cm	50 in 127 cm	52 in 132.1 cm	54 in 137.2 cm

SIZES

18-34	18	20	22	24	26	28	30	32	34
High Bust	39.5 in 100.3 cm	41.5 in 105.4 cm	43.5 in 110.5 cm	45.5 in 115.6 cm	47.5 in 120.7 cm	49.5 in 125.7 cm	51.5 in 130.8 cm	53.5 in 135.9 cm	55.5 in 141 cm
Bust A cup	42.5 in 108 cm	44.5 in 113 cm	46.5 in 118.1 cm	48.5 in 123.2 cm	50.5 in 128.3 cm	52.5 in 133.4 cm	54.5 in 138.4 cm	56.5 in 143.5 cm	58.5 in 148.6 cm
Bust B/C cup	43 in 109.2 cm	45 in 114.3 cm	47 in 119.4 cm	49 in 124.5 cm	51 in 129.5 cm	53 in 134.6 cm	55 in 139.7 cm	57 in 144.8 cm	59 in 149.9 cm
Bust D/DD cup	44 in 111.8 cm	46 in 116.8 cm	48 in 121.9 cm	50 in 127 cm	52 in 132.1 cm	54 in 137.2 cm	56 in 142.2 cm	58 in 147.3 cm	60 in 152.4 cm
Bust F/G cup	45 in 114.3 cm	47 in 119.4 cm	49 in 124.5 cm	51 in 129.5 cm	53 in 134.6 cm	55 in 139.7 cm	57 in 144.8 cm	59 in 149.9 cm	61 in 154.9 cm
Bust H cup	46 in 116.8 cm	48 in 121.9 cm	50 in 127 cm	52 in 132.1 cm	54 in 137.2 cm	56 in 142.2 cm	58 in 147.3 cm	60 in 152.4 cm	62 in 157.5 cm
Waist	40 in 101.6 cm	42 in 106.7 cm	44 in 111.8 cm	46 in 116.8 cm	48 in 121.9 cm	50 in 127 cm	52 in 132.1 cm	54 in 137.2 cm	56 in 142.2 cm
Hips	48 in 121.9 cm	50 in 127 cm	52 in 132.1 cm	54 in 137.2 cm	56 in 142.2 cm	58 in 147.3 cm	60 in 152.4 cm	62 in 157.5 cm	64 in 162.6 cm

RESOURCES

Here are some of the fabrics and supplies I used for the samples and in the video tutorial. There are lots of places to purchase fabric, so this is solely a guide you can use as a reference:

[Navy Silk Matka](#)

[Orange Silk Matka](#)

[Navy Striped Lining and Buttons](#)

[Red Striped Lining and Buttons](#)

[Dritz Covered Button Refill Kit](#)

(We used size 36L for the navy jacket and size 45L for the orange jacket)

FABRIC NOTES

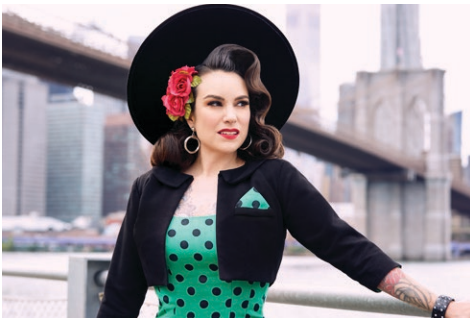
We recommend medium-weight wovens: cottons like denim, corduroy, and sateen; linen and linen blends; wool suitings, flannel, and tweed; brocade; and silk matka and silk/wool blends.

For the lining fabric, we recommend: lightweight cottons like broadcloth, poplin, or lawn; silks like charmeuse, crepe de chine, or habotai; lining fabrics like rayon bemberg, acetate, or silky polyester; and silk/cotton blends.

MATERIALS & NOTIONS

- Fabric for the jacket
- Lining fabric
- Lightweight fusible interfacing (look for woven or tricot types)
- Two 1/8-in buttons (waist-length version)
- Eight 1/8-in buttons from a covered button refill kit (cropped version)
- Fabric to cover buttons (cropped version)
- Thread to match





FIT NOTES

The Brooklyn Jacket is a closely fitted lightweight jacket designed to have about 2¼ to 4¼ inches (in) (5.7 to 10.8 cm) of ease in the bust and 1½ to 2½ in (3.8 to 6.4 cm) of ease in the waist. The waist-length version ends at the natural waist and closes with two fully functional buttons. The cropped version ends 2 in (5.1 cm) above your natural waist and is left open at the jacket front with eight non-functional buttons. See the charts at right for finished garment measurements.

Darted styles like the Brooklyn Jacket require close attention to fitting, so be sure to make a muslin of this jacket. The bust darts should point directly toward your apex (the fullest part of the breast) and should end ½ in to 1 in (1.3 cm to 2.5 cm) from the apex. It is very common to need to adjust the length or height of darts to fit your unique bust shape.

FINISHED MEASUREMENTS

Sizes 2-20	2	4	6	8	10	12	14	16	18	20
Bust A	32.75 in 83.2 cm	34.75 in 88.3 cm	36.75 in 93.3 cm	38.75 in 98.4 cm	40.75 in 103.5 cm	42.75 in 108.6 cm	44.75 in 113.7 cm	46.75 in 118.7 cm	48.75 in 123.8 cm	50.75 in 128.9 cm
Bust B/C	33.25 in 84.5 cm	35.25 in 89.5 cm	37.25 in 94.6 cm	39.25 in 99.7 cm	41.25 in 104.8 cm	43.25 in 109.9 cm	45.25 in 114.9 cm	47.25 in 120 cm	49.25 in 125.1 cm	51.25 in 130.2 cm
Bust D/DD	34.25 in 87 cm	36.25 in 92.1 cm	38.25 in 97.2 cm	40.25 in 102.2 cm	42.25 in 107.3 cm	44.25 in 112.4 cm	46.25 in 117.5 cm	48.25 in 122.6 cm	50.25 in 127.6 cm	52.25 in 132.7 cm
Bust F/G	35.25 in 89.5 cm	37.25 in 94.6 cm	39.25 in 99.7 cm	41.25 in 104.8 cm	43.25 in 109.9 cm	45.25 in 114.9 cm	47.25 in 120 cm	49.25 in 125.1 cm	51.25 in 130.2 cm	53.25 in 135.3 cm
Bust H	36.25 in 92.1 cm	38.25 in 97.2 cm	40.25 in 102.2 cm	42.25 in 107.3 cm	44.25 in 112.4 cm	46.25 in 117.5 cm	48.25 in 122.6 cm	50.25 in 127.6 cm	52.25 in 132.7 cm	54.25 in 137.8 cm
Waist/Full Length	26.5 in 67.3 cm	28.5 in 72.4 cm	30.5 in 77.5 cm	32.5 in 82.6 cm	34.5 in 87.6 cm	36.5 in 92.7 cm	38.5 in 97.8 cm	40.5 in 102.9 cm	42.5 in 108 cm	44.5 in 113 cm
Waist/Bolero Length	29.5 in 74.9 cm	31.5 in 80 cm	33.5 in 85.1 cm	35.5 in 90.2 cm	37.5 in 95.3 cm	39.5 in 100.3 cm	41.5 in 105.4 cm	43.5 in 110.5 cm	45.5 in 115.6 cm	47.5 in 120.7 cm
Bolero Body Length	14.5 in 36.8 cm	14.6 in 37.1 cm	14.75 in 37.5 cm	14.9 in 37.8 cm	15 in 38.1 cm	15.1 in 38.4 cm	15.25 in 38.7 cm	15.4 in 39.1 cm	15.5 in 39.4 cm	15.6 in 39.6 cm
Full Body Length	16.5 in 41.9 cm	16.6 in 42.2 cm	16.75 in 42.5 cm	16.9 in 42.9 cm	17 in 43.2 cm	17.1 in 43.4 cm	17.25 in 43.8 cm	17.4 in 44.2 cm	17.5 in 44.5 cm	17.6 in 44.7 cm
Bicep	13 in 33 cm	13.75 in 34.9 cm	14.5 in 36.8 cm	15.25 in 38.7 cm	16 in 40.6 cm	16.75 in 42.5 cm	17.5 in 44.5 cm	18.25 in 46.4 cm	19 in 48.3 cm	19.75 in 50.2 cm
Long Sleeve Opening	10.75 in 27.3 cm	11 in 27.9 cm	11.25 in 28.6 cm	11.5 in 29.2 cm	11.75 in 29.8 cm	12 in 30.5 cm	12.25 in 31.1 cm	12.5 in 31.8 cm	12.75 in 32.4 cm	13 in 33 cm
Short Sleeve Opening	14 in 35.6 cm	14.4 in 36.6 cm	14.75 in 37.5 cm	15.1 in 38.1 cm	15.5 in 39.4 cm	15.9 in 40.4 cm	16.25 in 41.3 cm	16.6 in 42.2 cm	17 in 43.2 cm	17.4 in 44.2 cm

Sizes 18-34	18	20	22	24	26	28	30	32	34
Bust A/B	46.75 in 118.7 cm	48.75 in 123.8 cm	50.75 in 128.9 cm	52.75 in 134 cm	54.75 in 139.1 cm	56.75 in 144.1 cm	58.75 in 149.2 cm	60.75 in 154.3 cm	62.75 in 159.4 cm
Bust C	47.25 in 120 cm	49.25 in 125.1 cm	51.25 in 130.2 cm	53.25 in 135.3 cm	55.25 in 140.3 cm	57.25 in 145.4 cm	59.25 in 150.5 cm	61.25 in 155.6 cm	63.25 in 160.7 cm
Bust D/DD	48.25 in 122.6 cm	50.25 in 127.6 cm	52.25 in 132.7 cm	54.25 in 137.8 cm	56.25 in 142.9 cm	58.25 in 148 cm	60.25 in 153 cm	62.25 in 158.1 cm	64.25 in 163.2 cm
Bust F/G	49.25 in 125.1 cm	51.25 in 130.2 cm	53.25 in 135.3 cm	55.25 in 140.3 cm	57.25 in 145.4 cm	59.25 in 150.5 cm	61.25 in 155.6 cm	63.25 in 160.7 cm	65.25 in 165.7 cm
Bust H	50.25 in 127.6 cm	52.25 in 132.7 cm	54.25 in 137.8 cm	56.25 in 142.9 cm	58.25 in 148 cm	60.25 in 153 cm	62.25 in 158.1 cm	64.25 in 163.2 cm	66.25 in 168.3 cm
Waist/Full Length	41.5 in 105.4 cm	43.5 in 110.5 cm	45.5 in 115.6 cm	47.5 in 120.7 cm	49.5 in 125.7 cm	51.5 in 130.8 cm	53.5 in 135.9 cm	55.5 in 141 cm	57.5 in 146.1 cm
Waist/Bolero Length	39.5 in 100.3 cm	41.5 in 105.4 cm	43.5 in 110.5 cm	45.5 in 115.6 cm	47.5 in 120.7 cm	49.5 in 125.7 cm	51.5 in 130.8 cm	53.5 in 135.9 cm	55.5 in 141 cm
Bolero Body Length	15.1 in 38.1 cm	15.25 in 38.7 cm	15.4 in 39.1 cm	15.5 in 39.4 cm	15.6 in 39.6 cm	15.75 in 40 cm	15.9 in 40.4 cm	16 in 40.6 cm	16.1 in 40.9 cm
Full Body Length	17.1 in 43.4 cm	17.25 in 43.8 cm	17.4 in 44.2 cm	17.5 in 44.5 cm	17.6 in 44.7 cm	17.75 in 45.1 cm	17.9 in 45.5 cm	18 in 45.7 cm	18.1 in 46 cm
Bicep	17.4 in 44.2 cm	18 in 45.7 cm	18.6 in 47.2 cm	19.25 in 48.9 cm	19.9 in 50.5 cm	20.5 in 52.1 cm	21.1 in 53.6 cm	21.75 in 55.2 cm	22.4 in 56.9 cm
Long Sleeve Opening	12.5 in 31.8 cm	12.75 in 32.4 cm	13 in 33 cm	13.25 in 33.7 cm	13.5 in 34.3 cm	13.75 in 34.9 cm	14 in 35.6 cm	14.25 in 36.2 cm	14.5 in 36.8 cm
Short Sleeve Opening	17.6 in 44.7 cm	18 in 45.7 cm	18.4 in 46.7 cm	18.75 in 47.6 cm	19.1 in 48.5 cm	19.5 in 49.5 cm	19.9 in 50.5 cm	20.25 in 51.4 cm	20.6 in 52.3 cm

REQUIRED YARDAGE & CUTTING LAYOUTS

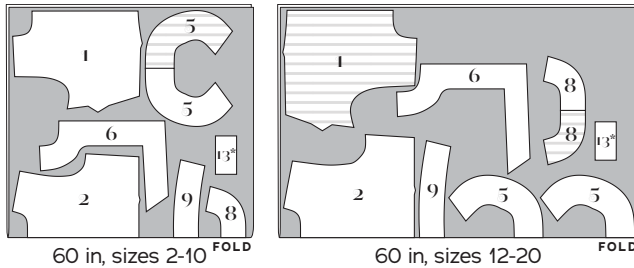
NOTES

- All pattern pieces are shown in a “without nap” layout. You may need additional yardage for directional prints, stripes, plaids, and other prints that need to be matched across seamlines.
- Be sure to note whether the pieces are cut on a double or single layer of fabric. For a double layer, there will be a note indicating FOLD on the layout.
- Choose the cutting layout for your desired jacket length on page 5, and then be sure to select the sleeve layout of your choice on page 6. Add the yardage amounts together to get your total required yardage.

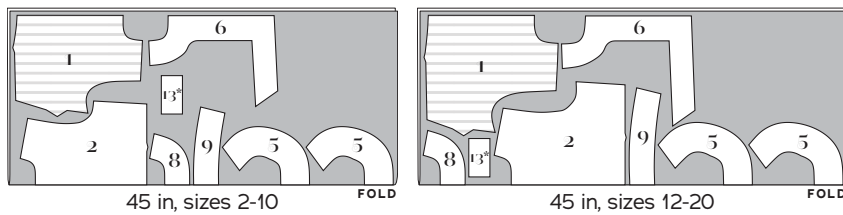
SIZES 2-20

Cropped Jacket, fabric (1, 2, 5, 6, 8, 9, 13*)

	Sizes 2-10	Sizes 12-20
45 in	1½ yds 1.4 m	1⅝ yds 1.5 m
60 in	1 yds .9 m	1⅜ yds 1.3 m

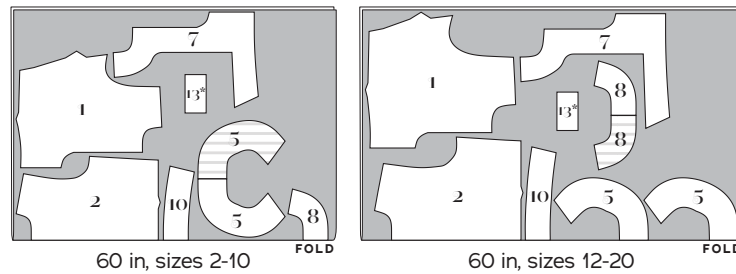


*Optional

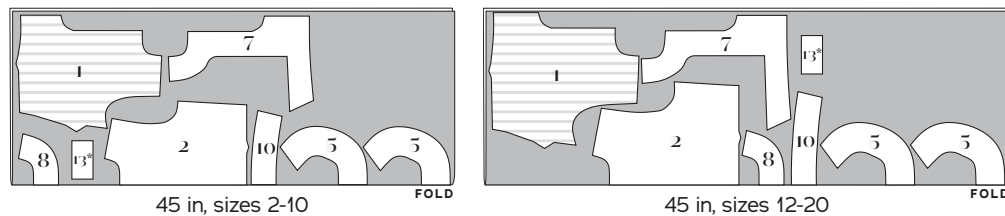


Waist-length Jacket, fabric (1, 2, 5, 7, 8, 10, 13*)

	Sizes 2-10	Sizes 12-20
45 in	1⅝ yds 1.5 m	2 yds 1.8 m
60 in	1¼ yds 1.1 m	1½ yds 1.4 m



*Optional

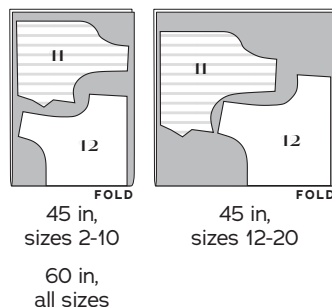


Cropped Jacket, Lining (11, 12)

	Sizes 2-10	Sizes 12-20
45 in	½ yd 0.5 m	¾ yd 0.7 m
60 in	½ yd 0.5 m	½ yd 0.5 m

Waist-length Jacket, Lining (11, 12)

	Sizes 2-10	Sizes 12-20
45 in	⅝ yd 0.6 m	⅞ yd 0.8 m
60 in	⅞ yd 0.8 m	⅞ yd 0.8 m

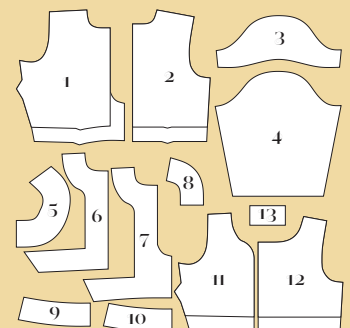


KEY TO LAYOUTS

- Right side of pattern piece
- Wrong side of pattern piece

PATTERN PIECES

- Jacket Front**
Cut 2 fabric
- Jacket Back**
Cut 1 fabric on fold
- Cap Sleeve**
Cut 2 fabric, 2 lining
- Three-Quarter Sleeve**
Cut 2 fabric, 2 lining
- Collar**
Cut 2 fabric on fold, 1 interfacing on fold
- Front Facing (for cropped version)**
Cut 2 fabric, 2 interfacing
- Front Facing (for waist-length version)**
Cut 2 fabric, 2 interfacing
- Back Neck Facing**
Cut 1 fabric on fold, 1 interfacing on fold
- Back Waist Facing (for cropped version)**
Cut 1 fabric on fold, 1 interfacing on fold
- Back Waist Facing (for waist-length version)**
Cut 1 fabric on fold, 1 interfacing on fold
- Front Lining**
Cut 2 lining
- Back Lining**
Cut 1 lining on fold
- Faux Welt Pocket (optional)**
Cut 1 fabric, 1 interfacing



Pocket Square (optional)

Cut 1 square, 6 in by 6 in (15 by 15 cm) of lining

REQUIRED YARDAGE & CUTTING LAYOUTS (CONT'D)

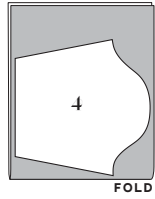
Cap Sleeve, fabric and lining (3)

All sizes	
45 in	3/8 yd .3 m
60 in	.3 m



Three-Quarter Sleeve, fabric and lining (4)

All sizes	
45 in	5/8 yd .6 m
60 in	.6 m

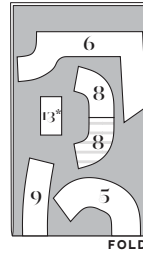


Cropped Jacket, Interfacing (5, 6, 8, 9, 13*)

(5, 6, 8, 9, 13*)

All sizes	
60 in	5/8 yd 0.6 m

*Optional

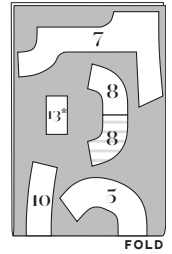


Waist-length Jacket, Interfacing (5, 7, 8, 10, 13*)

(5, 7, 8, 10, 13*)

All sizes	
60 in	5/8 yd 0.6 m

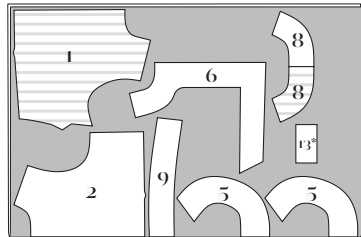
*Optional



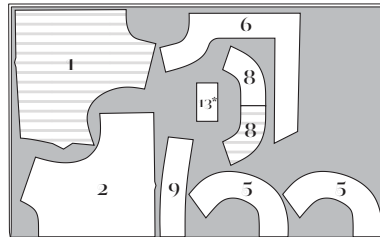
SIZES 18-34

Cropped Jacket, fabric (1, 2, 5, 6, 8, 9, 13*)

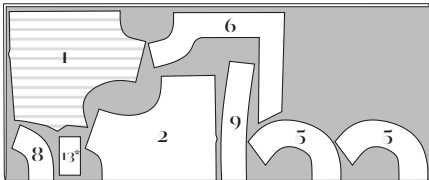
	Sizes 18-24	Sizes 26-34
	45 in	1 5/8 yds 1.5 m
60 in	1 3/8 yds 1.3 m	1 3/8 yds 1.3 m



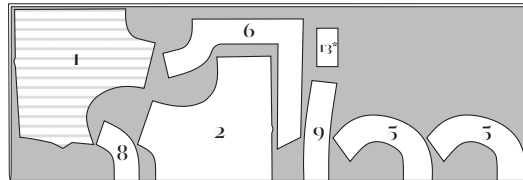
60 in, sizes 18-24



60 in, sizes 26-34



45 in, sizes 18-24

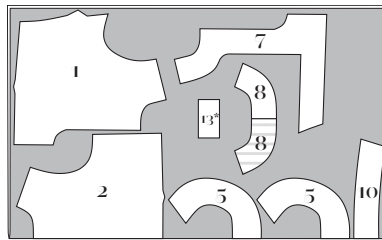


45 in, sizes 26-34

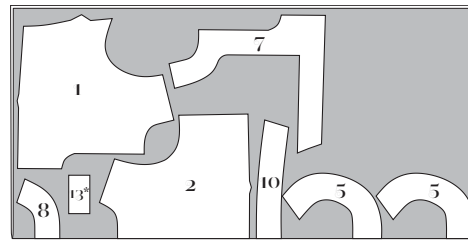
Waist-length Jacket, fabric (1, 2, 5, 7, 8, 10, 13*)

(1, 2, 5, 7, 8, 10, 13*)

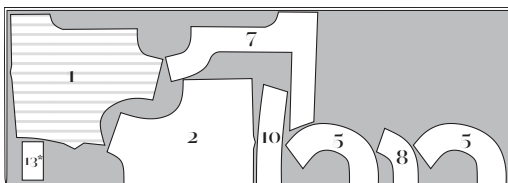
	Sizes 18-24	Sizes 26-34
	45 in	1 7/8 yds 1.7 m
60 in	1 1/2 yds 1.3 m	1 3/4 yds 1.6 m



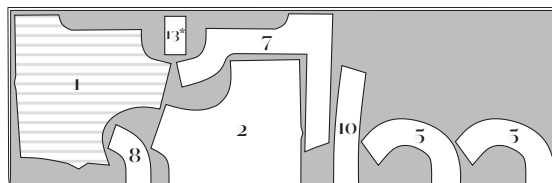
60 in, sizes 18-24



60 in, sizes 26-34



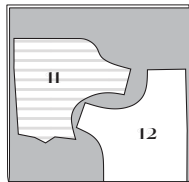
45 in, sizes 18-24



45 in, sizes 26-34

Cropped Jacket, Lining (11, 12)

All sizes	
45 in	3/4 yd 0.7 m
60 in	1/2 yd 0.5 m



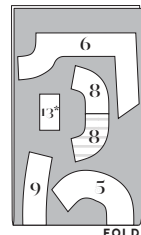
45 in, sizes 18-24



45 in, sizes 26-34
60 in, all sizes

Cropped Jacket, Interfacing (5, 6, 8, 9, 13*)

All sizes	
60 in	5/8 yd 0.6 m



FOLD

Waist-length Jacket, Interfacing (5, 7, 8, 10, 13*)

All sizes	
60 in	5/8 yd 0.6 m



FOLD

Waist-length Jacket, Lining (11, 12)

(11, 12)

All sizes	
45 in	7/8 yd 0.8 m
60 in	5/8 yd 0.6 m

Cap Sleeve, fabric and lining (3)

All sizes	
45 in	3/8 yd .3 m
60 in	.3 m



45 in, sizes 18-24
60 in, all sizes

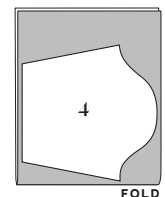


45 in, sizes 26-34

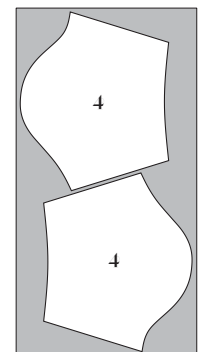
NOTE: This layout is cut with the fabric opened flat.

Three-Quarter Sleeve, fabric and lining (4)

All sizes	
45 in	5/8 yd .6 m
60 in	.6 m



45 in, sizes 18-24
60 in, all sizes



45 in, sizes 26-34

NOTE: This layout is cut with the fabric opened flat.

SEWING INSTRUCTIONS

BEFORE SEWING

Transferring marks: Use dressmaker's tracing paper and a tracing wheel to transfer all pattern markings to the wrong side (WS) of your fabric. Mark pattern notches by snipping into the seam allowance with the tip of your scissors.

Interfacing: The collar, facings, and optional faux welt pocket need to be stabilized with fusible interfacing prior to sewing. Follow the interfacing cutting instructions on the pattern pieces. Apply fusible interfacing to the WS of the fabric, using a press cloth and steam. Do not rub your iron back and forth; lift it up and press it down for several seconds at a time until interfacing is fully adhered.

NOTES

- 5/8-in (1.5 cm) seam allowances are included on all pattern pieces, except where otherwise noted.
- For the cropped version, cut the jacket, facing, and lining pieces at the cropped jacket horizontal cutting line. Also cut the jacket front and the cropped jacket front facing along the cropped jacket vertical cutting line.
- It is unnecessary to finish any seam allowances, as they will be completely enclosed by the lining.
- Press your stitching lines after every step, even when not specified in the instructions. You do not need to press basting stitches.
- We used a 6-in by 6-in (15-cm by 15-cm) piece of lining fabric to create the optional pocket square.

TIPS

- Cut the lining, pocket square, and button coverings from the same material to add design interest.
- Use a layer of tissue for cutting slippery lining fabrics. Lay the tissue on your cutting surface, then lay the fabric on top. Pin your patterns to both the tissue and the fabric, and then cut both together. The tissue stabilizes the fabric and makes it much easier to cut.
- For easy step-by-step instructions on how to make fabric-covered buttons, check out [this Charm blog post](#).



- You may wish to add shoulder pads to your jacket to create a smooth line. We like to use 3/8-in (9.5 mm) thick shoulder pads, but you can try different thicknesses based on the effect you want to achieve.

SEW THE BROOKLYN JACKET

Faux Welt Pocket (Optional)

1. Prepare the faux pocket: fold and pin Faux Welt Pocket (13) in half length-wise, right sides (RS) together. Stitch along both short ends. Trim points close to stitching and grade seam allowances. Turn faux welt pocket RS out, making sure corners are sharp by using a point turner, knitting needle, or pin to gently poke or pull them out. Press flat. Baste the remaining long edge of the faux pocket with 1/2-in (1.3 cm) seam allowance, and finish as desired.

2. Sew faux pocket to jacket: mark $\frac{5}{8}$ -in (1.5 cm) seamline on faux welt pocket with chalk. Pin faux welt pocket to left side of Jacket Front (1), RS together, so the marked seamline is positioned along the bottom edge of the faux welt pocket alignment rectangle. Stitch faux welt pocket to jacket between alignment circles. Trim seam allowance. Fold pocket up and press. Using a slipstitch, hand stitch short ends of welt into place.

NOTE: We attached the faux welt pocket to the left side of our jacket (as worn). You may attach it to either side.

Jacket

1. Staystitch neckline: using a $\frac{1}{2}$ -in (1.3 cm) seam allowance, staystitch neckline on jacket front and Jacket Back (2), stitching from shoulder seam to center front (CF)/center back (CB) and backstitching at both ends to stabilize neckline.

2. Sew bust and front waist darts: on jacket front, bring dart legs RS together, pinning along marked lines. Stitch along marked lines from dart base to dart point. Backstitch at the beginning but not at the end, leaving a thread tail a few inches long. Tie thread tails by hand. Press bust darts down and waist darts toward CF.

3. Sew back waist darts: on jacket back, repeat the previous step for the waist darts. Press waist darts toward CB.

4. Sew side seams and shoulder seams: with RS together, pin jacket front to jacket back at side seams and shoulder seams, matching notches. Stitch. Press seam allowances open.

Collar

1. Assemble collar: pin interfaced Collar (5) to uninterfaced collar, RS together. (The interfaced side will become the upper collar). Stitch along three sides, pivoting at corners and leaving notched edge open. Trim points close to stitching and grade seam allowances so that interfaced seam allowance is slightly wider than uninterfaced seam allowance. Turn collar RS out, making sure corners are sharp by using a point turner, knitting needle, or pin to gently poke or pull them out. Press flat.

2. Understitch collar: with collar opened out and seam allowances underneath, stitch along uninterfaced collar

$\frac{1}{8}$ in (3 mm) from the seamline on uninterfaced collar's RS, catching seam allowances in stitching. Press collar, rolling seamline slightly to WS so understitching is hidden on underside of collar. Baste the remaining long edge of the collar with $\frac{1}{2}$ -in (1.3 cm) seam allowance.

3. Sew collar to jacket: pin collar to RS of jacket with uninterfaced side against jacket, matching circles. Baste collar to jacket with $\frac{1}{2}$ -in (1.3 cm) seam allowance.

Facing

1. Assemble facing unit: pin Front Facing (6 for cropped jacket or 7 for waist-length jacket) to Back Neck Facing (8) at shoulders, RS together. Stitch. Pin front facing unit to Back Waist Facing (9 for cropped jacket or 10 for waist-length jacket) at side seams, RS together. Stitch. Press seam allowances open.

2. Sew facing to jacket: pin facing to jacket with RS together, sandwiching collar between the facing and jacket. Stitch. Grade seam allowances and clip across corners. Clip curves every $\frac{1}{2}$ in (1.3 cm).

3. Understitch facing: with facing opened out from jacket and seam allowances underneath, stitch along facing $\frac{1}{8}$ in (3 mm) from the seamline on facing's RS, catching seam allowances in stitching. Start and stop understitching at corners as necessary. Press facing to inside of jacket, rolling seamline slightly to WS so it is hidden inside.

Sleeves

1. Sew sleeve seam: pin Cap Sleeve (3) or Three-Quarter Sleeve (4) RS together along underarm seam. Stitch. Press seam allowances open. Repeat for sleeve lining.

2. Attach sleeve lining: pin sleeve to sleeve lining, RS together at hem. Stitch. Grade seam allowances and clip into curves every $\frac{1}{2}$ in (1.3 cm) as needed. Turn sleeve RS out.

3. Understitch sleeve hem: with sleeve opened out from lining and seam allowances underneath, stitch along lining $\frac{1}{8}$ in (3 mm) from the seamline on lining's RS, catching seam allowances in stitching. Press sleeve hem, rolling seamline slightly to WS so understitching is hidden on inside of sleeve. With WS together, baste

the sleeve to sleeve lining around the armhole with 1/2-in seam allowance and treat as one unit.

4. Ease sleeve cap: ease the sleeve cap between the sets of notches using two rows of basting stitches or try the crowding method shown in this month's video: switch to a 3.5- to 4.0-mm stitch length and stitch the shoulder cap between notches with a 1/2-in seam allowance, using your index finger to press directly behind the presser foot to crowd the stitches. The fabric will bunch up between the presser foot and your finger, creating tiny gathers. When the fabric gets too bunched up, release it and start again by placing your finger back behind the presser foot. Adjust the sleeve fullness. If your piece needs to be eased more after crowding, pull the bobbin threads and draw the fabric up as you would normally do when gathering fabric.

5. Sew sleeves into jacket: pin sleeve to bodice armhole RS together, matching underarm seams and notches. Distribute sleeve fullness evenly between notches. With the sleeve on the bottom and the jacket on top, stitch the entire sleeve as normal with a 5/8-in (1.5 cm) seam allowance, starting at the underarm. Reinforce the underarm between notches by stitching again 1/8 in (3 mm) outside the seam. Trim sleeve seam allowance and press toward jacket.

Lining

1. Prepare front jacket lining: bring bust and waist pleat lines RS together on Front Lining (11), following arrows and pinning in place. Secure pleats by basting with a 1/2-in seam allowance. From the WS, press bust pleats down and waist pleats toward the side seam.

2. Prepare back jacket lining: bring neck and waist pleat lines RS together on Back Lining (12), following arrows and pinning in place. At CB, stitch the neck and waist pleats from the WS along marked pleat lines, backstitching at the beginning and end of stitching. Secure side waist pleats by basting with a 1/2-in seam allowance. From the WS, press side waist pleats toward the side seam and CB pleats to one side.

3. Sew front lining to back lining at shoulder and side seams: with RS together, pin front lining to back lining at shoulder and side seams. Stitch. Press seam allowances open.

4. Staystitch neckline: using a 1/2-in (1.3 cm) seam allowance, staystitch lining neckline. Clip every 1/2 in around curves.

5. Staystitch lining armholes: using a 5/8-in (1.5 cm) seam allowance, staystitch sleeve lining armholes. Clip every 1/2 in and press to WS, rolling the stitching line just to WS.

6. Prepare lining bottom edge: on jacket lining, press bottom edge 5/8 in (1.5 cm) to WS.

7. Sew lining to jacket: with RS together, pin lining to facings along all edges except bottom, matching notches and seams. Stitch, leaving bottom lining edge free. Clip curves every 1/2 in (1.3 cm). Turn jacket to RS.

8. Finish lining: pin and slipstitch armhole lining to just cover the sleeve seam allowance. Pin and slipstitch folded bottom edge of lining to waist facing.

Finish Jacket

1. Sew buttons and buttonholes (waist-length jacket): using pattern markings as a placement guide, sew buttonholes by machine on right half of jacket front (as worn). Following pattern markings for buttonholes, sew buttons by hand or machine to left half of jacket front (as worn).

2. Sew buttons (cropped jacket): using pattern markings as a placement guide, sew buttons by hand or machine on both halves of jacket front.

3. Attach pocket square (optional): fold pocket square fabric in half, WS together, then fold in half again (forming quarters). Press. To create the visible triangular portion of the faux pocket square, rotate the square so the raw edges are closest to you and mark a line across the pocket square from outer corner to opposite corner. The raw edges will be below the line. Stitch along the marked line. Trim with a 5/8-in (1.5 cm) seam allowance and finish raw edge. Pin pocket square into faux welt pocket, folding in edges. Stitch by hand into place, making sure your stitches don't show on the RS of the jacket.

Enjoy your smart new Brooklyn Jacket!

PATTERN PIECE LOCATION GUIDE

Here is a list to help you locate the pattern pieces on the letter-size tiled pages and AO pattern sheets.
The tiled pieces and AO sheets are included as separate pdf files as part of this digital pattern.

SIZES 2-20

PC#	Piece Name	Tiled	AO
1	Jacket Front, A Cup	44-49	1
1	Jacket Front, B/C Cup	52-57	1
1	Jacket Front, D/DD Cup	60-65	2
1	Jacket Front, F/G Cup	68-73	2
1	Jacket Front, H Cup	76-81	2
2	Jacket Back	9-10, 17-18	1
3	Cap Sleeve	3-6	3
4	Three-Quarter Sleeve	11-14, 20-22	4
5	Collar	1-2	1
6	Front Facing (for cropped version), A-C Cup	26, 29-31	3
6	Front Facing (for cropped version), D/DD Cup	26-31	3
6	Front Facing (for cropped version), F/G Cup	23, 26-28	3
6	Front Facing (for cropped version), H Cup	23-28	3
7	Front Facing (for waist-length version), A-C Cup	33-35, 38-39, 42-43	4
7	Front Facing (for waist-length version), D/DD Cup	32-34, 36-37	4
7	Front Facing (for waist-length version), F/G Cup	32-33, 36-38, 40-42	4
7	Front Facing (for waist-length version), H Cup	38-39, 41-43	4
8	Back Neck Facing	7	1
9	Back Waist Facing (for cropped version)	11, 19	1
10	Back Waist Facing (for waist-length version)	3, 11	1
11	Front Lining, A Cup	48-51	3
11	Front Lining, B/C Cup	56-59	5
11	Front Lining, D/DD Cup	64-67	5
11	Front Lining, F/G Cup	72-75	5
11	Front Lining, H Cup	80-83	5
12	Back Lining	6-8, 14-16	3
13	Faux Welt Pocket (optional)	3	1

Cup Size Printing Guide, sizes 2-20

A Cup: 26, 29-31, 33-35, 38-39, 42-51

B/C Cup: 26, 29-31, 33-35, 38-39, 42-43, 52-59

D/DD Cup: 26-34, 36-37, 60-67

F/G Cup: 23-28, 32-33, 36-38, 40-42, 68-75

H Cup: 23-25, 28, 38-39, 41-43, 76-83

All Cups: 1-22

SIZES 18-34

PC#	Piece Name	Tiled	AO
1	Jacket Front, A/B Cup	54-61	1
1	Jacket Front, C Cup	63-70	1
1	Jacket Front, D/DD Cup	72-79	2
1	Jacket Front, F/G Cup	81-88	2
1	Jacket Front, H Cup	90-97	2
2	Jacket Back	9-10, 17-19	1
3	Cap Sleeve	4-6, 12-13	3
4	Three-Quarter Sleeve	12-15, 20-23	3
5	Collar	1-2	3
6	Front Facing (for cropped version), A-C Cup	26-28, 31-32, 37	4
6	Front Facing (for cropped version), D/DD Cup	32-33, 36-38	4
6	Front Facing (for cropped version), F/G Cup	24-26, 29-30	4
6	Front Facing (for cropped version), H Cup	25-26, 30-31, 34-36	4
7	Front Facing (for waist-length version), A-C Cup	39-41, 44-45, 50	5
7	Front Facing (for waist-length version), D/DD Cup	40-41, 45-46, 49-51	5
7	Front Facing (for waist-length version), F/G Cup	41-43, 46-47, 51-52	5
7	Front Facing (for waist-length version), H Cup	42-43, 47-48, 51-53	5
8	Back Neck Facing	23	2
9	Back Waist Facing (for cropped version)	11, 19	1
10	Back Waist Facing (for waist-length version)	3, 11	1
11	Front Lining, A/B Cup	58-62	5
11	Front Lining, C Cup	67-71	6
11	Front Lining, D/DD Cup	76-80	6
11	Front Lining, F/G Cup	85-89	6
11	Front Lining, H Cup	94-101	6
12	Back Lining	6-8, 14-16, 23	3
13	Faux Welt Pocket (optional)	3	2

Cup Size Printing Guides, sizes 18-34

A/B Cup: 26-28, 31-32, 37, 39-41, 44-45, 50, 54-62

C Cup: 26-28, 31-32, 37, 39-41, 44-45, 50, 63-71

D/DD Cup: 32-33, 36-38, 40-41, 45-46, 49-51, 72-80

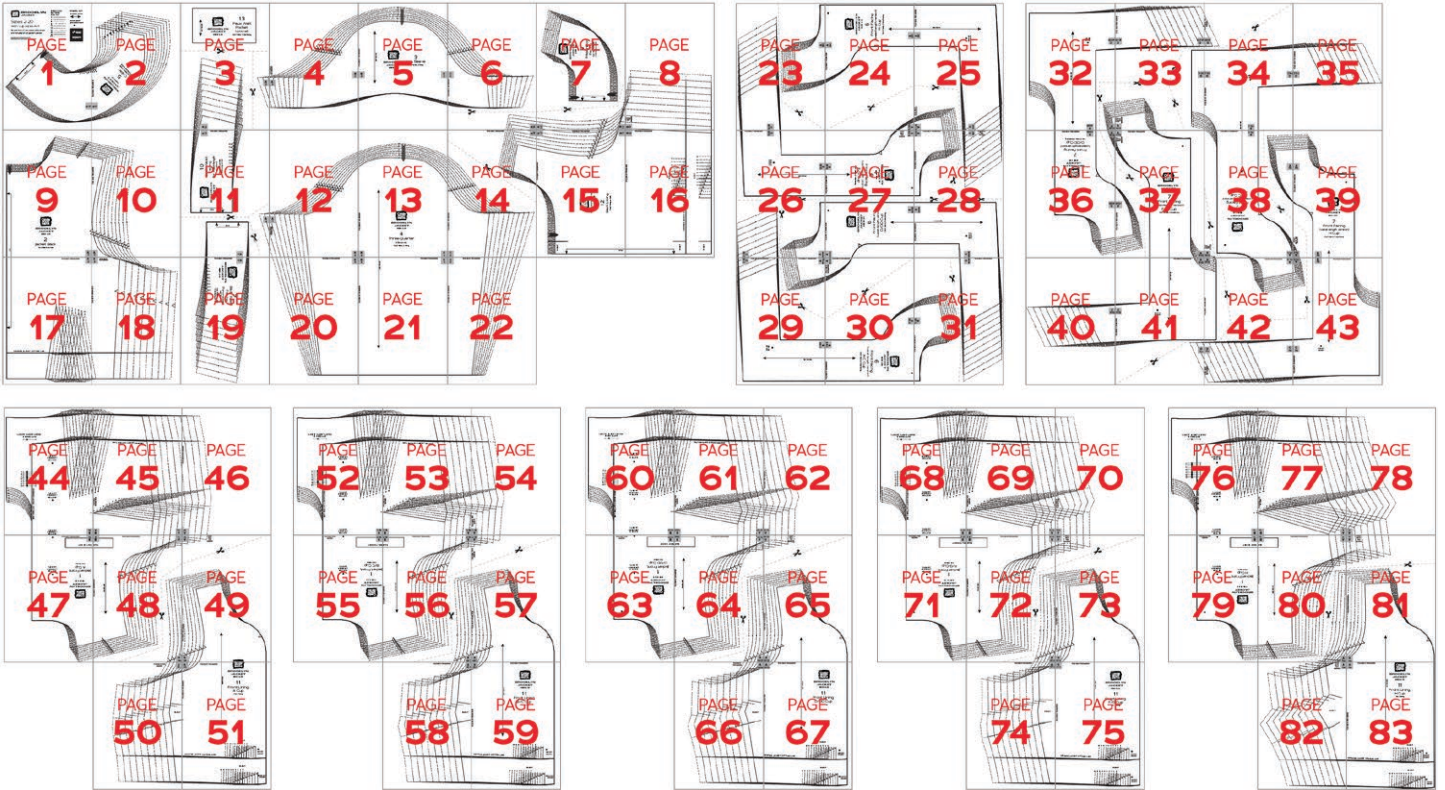
F/G Cup: 24-26, 29-30, 41-43, 46-47, 51-52, 81-89

H Cup: 25-26, 30-31, 34-36, 42-43, 47-48, 51-53, 90-101

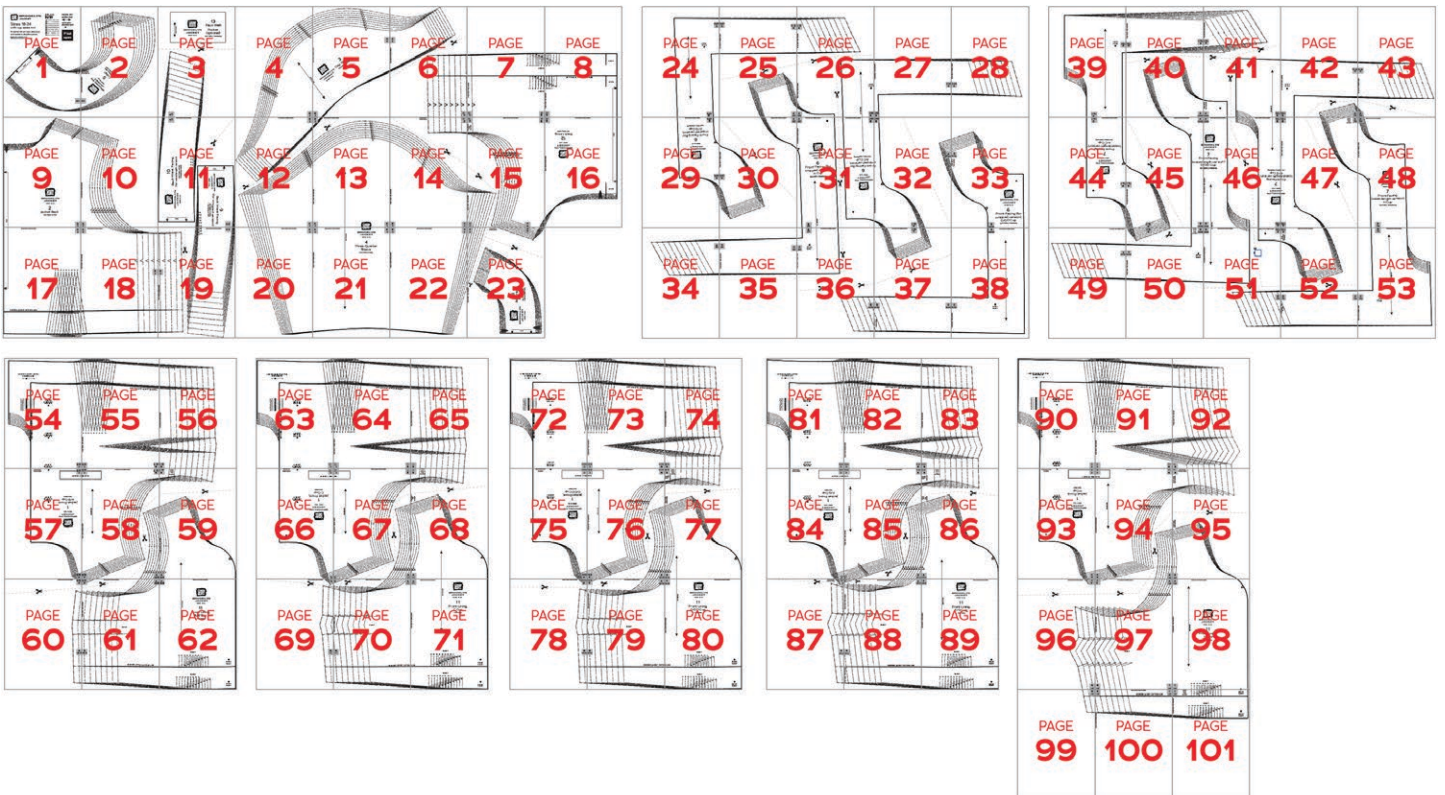
All Cups: 1-23

TILING MAPS

SIZES 2-20



SIZES 18-34



HOW TO USE THIS PATTERN

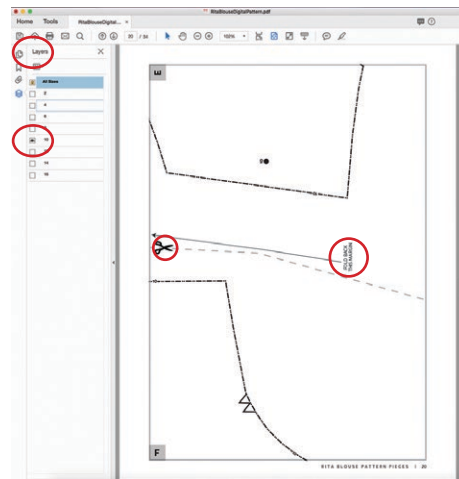
The pattern pieces are tiled so you can print them on Letter (8½" x 11") or A4 size paper. You can also send the A0 pattern sheet PDF to a local or online printer (like www.pdfplotting.com) to print on large sheets (36" x 48" for U.S. or A0 for international).

This pattern includes size layers. To get the best results, open either the Tiled or A0 pattern pieces PDF in Acrobat Reader.

Open the Layers Palette (View> Show/Hide>Navigation Panes>Layers) and hide all of the layer(s) except for the ones you want to print by clicking

on the eye icon.

The All Sizes layer has general pattern information and will always print.



WORKING WITH THE TILED PIECES

Go to File>Print and change the page range to the pages you need for the pieces you've chosen (see Pattern Pieces Printing Index). Make sure the Page Sizing settings to 100% or Actual Size. Test this after printing by measuring the 1" test box on the first page of the bodice pattern pieces.

Cut apart any pattern pieces that share a page by cutting on the gray long dashed lines. Then fold back the page margins on each page as directed.

Tape the pages together, butting up the folded page edges with the gray margin lines, matching up the letters in gray boxes.

MORE FROM GERTIE

On Instagram: Stay in the loop and get inspired.

On YouTube: Learn beginner and advanced sewing skills and techniques through my tutorials, watch episodes of my Gertie's World series, and join regular live streams.

On Patreon: Access monthly patterns and tutorial videos.

At CharmPatterns.com: Shop my sewing patterns and accessories.

